

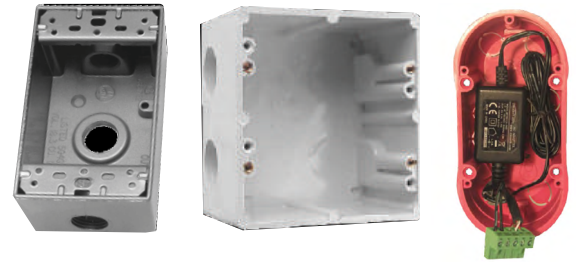
INSTALLATION

Accessories - iQ-DMX-STICK-CW4



1 MOUNT AN ELECTRICAL BOX INSIDE THE WALL

The controller can be installed in a standard electrical backbox. This box is usually 3.29" high and 2.36" wide. You can insert the AC/DC adapter inside or outside the backbox.



2 CONNECT THE WIRES

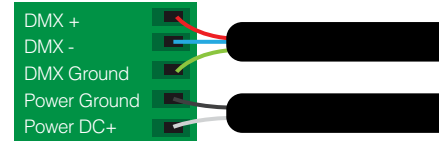
POWER: Connect a 5-10V 0.6A AC/DC supply. Be sure to not invert the + and the ground.

DMX: Connect the DMX cable to the lighting receivers (LEDs, Dimmers, Fixtures..) (for XLR: 1 = ground, 2 = DMX-, 3 = DMX+) There are 2 ways to connect the power and DMX:

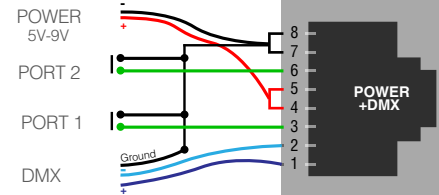
NOTE:

- Check Pin Configurations. Applying Power To The DMX Input Will Damage The Controller.
- Make Sure The Controller Is Mounted Flat Without Obstructions From Behind As This Can Push Apart The Glass .

Connector Block



RJ45



3 MOUNT AN ELECTRICAL BOX INSIDE THE WALL

- Mount the back side of the interface on the wall with 2 or more screws
- Plug the connectors :
 - DMX and power (connector block)
 - Ethernet cable

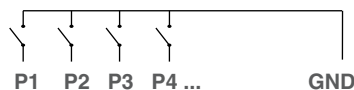
The front panel is mounted by clipping the 2 tabs along the top edge to the back plate and then arching down. 1 screw should be attached underneath to hold the controller in place.

OTHER CONNECTIONS

Dry Contact Port Triggering

It is possible to start scenes using the dry contract input ports available on the HE10 extension socket. To activate a port, a brief contact of atleast 1/25 second must be established between the ports (1...8) and the ground (GND).

NOTE: The scene will not be switched off when the switch is released.



HE10 EXTENSION socket

| | | | |
|-------|----|----|---------|
| NC | 1 | 2 | GND_DMX |
| NC | 3 | 4 | DMX+ |
| PORT8 | 5 | 6 | DMX- |
| PORT7 | 7 | 8 | NC |
| PORT6 | 9 | 10 | NC |
| PORT5 | 11 | 12 | NC |
| PORT4 | 13 | 14 | NC |
| PORT3 | 15 | 16 | NC |
| PORT2 | 17 | 18 | GND |
| PORT1 | 19 | 20 | VIN |

Compatible header connectors:
 WURTH ELEKTRONIK ref: 61301021121
 MOLEX ref: 10-89-7202
 TE Connectivity ref: 1-87227-0
 FCI ref: 77313-101-20LF
 HARWIN ref: M20-9981046
 SAMTEC ref: TSW-110-xx-T-D
 FARNELL ref: 1841232
 RS ref: 763-6754 673-7534 251-8165
 Mouser ref: 538-10-89-7202
 DIGIKEY ref: WM26820-ND

