

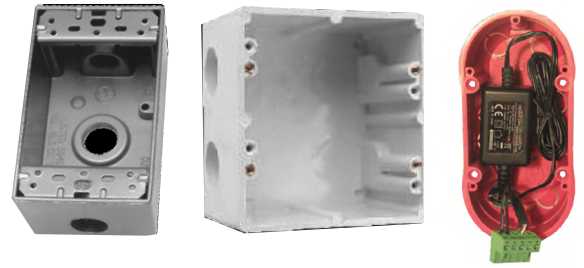
INSTALLATION

Accessories - iQ-DMX-STICK-DE3



1 MOUNT AN ELECTRICAL BOX INSIDE THE WALL

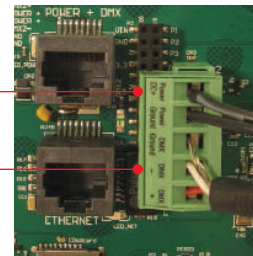
The controller can be installed in a standard electrical backbox. This box is usually 3.29" high and 2.36" wide. You can insert the AC/DC adapter inside or outside the backbox.



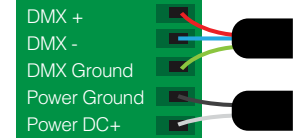
2 CONNECT THE WIRES

POWER: Connect a 5-10V 0.6A AC/DC supply. Be sure to not invert the + and the ground.

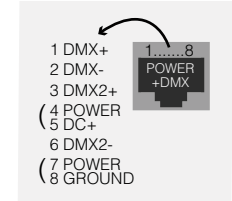
DMX: Connect the DMX cable to the lighting receivers (LEDs, Dimmers, Fixtures) (for XLR: 1 = ground, 2 = DMX-, 3 = DMX+) There are 2 ways to connect the power and DMX:



Connector Block



RJ45



NOTE:

- Check Pin Configurations. Applying Power To The DMX Input Will Damage The Controller.
- Make Sure The Controller Is Mounted Flat Without Obstructions From Behind As This Can Push Apart The Glass .

3 MOUNT AN ELECTRICAL BOX INSIDE THE WALL

- Mount the back side of the interface on the wall with 2 or more screws
- Plug the connectors :
 - DMX and power (connector block)
 - Ethernet cable

The front panel is mounted by clipping the 2 tabs along the top edge to the back plate and then arching down. 1 screw should be attached underneath to hold the controller in place.



OTHER CONNECTIONS

Compatible header connectors:
 WURTH ELEKTRONIK ref: 61301021121
 MOLEX ref: 10-89-7202
 TE Connectivity ref: 1-87227-0
 FCI ref: 77313-101-20LF
 HARWIN ref: M20-9981046
 SAMTEC ref: TSW-110-xx-T-D
 FARNELL ref: 1841232
 RS ref: 763-6754 673-7534 251-8165
 Mouser ref: 538-10-89-7202
 DIGIKEY ref: WM26820-ND

EXTENSION socket

VIN	20	19	PORT1
GND	18	17	PORT2
IR_RX	16	15	PORT3
3.3V	14	13	PORT4
Relay	12	11	PORT5
DMX2+	10	9	PORT6
DMX2-	8	7	PORT7
DMX1+	6	5	PORT8
DMX1-	4	3	RS232 RX
GND_DMXX	2	1	RS232 TX

