

INSTALLATION

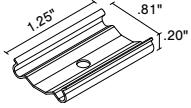
EXTRUSION - VEVE



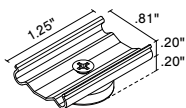
Mounting

NOTE: 2 clips provided for 4' or less;
4 clips provided for greater than 4'

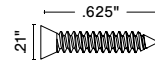
Stainless Steel Clip
(SST-01)



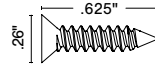
Magnet Clip
(MG-01)



HARDWARE

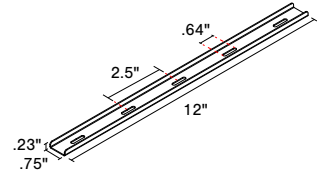


#4x5/8" Flat head screw
(Included)



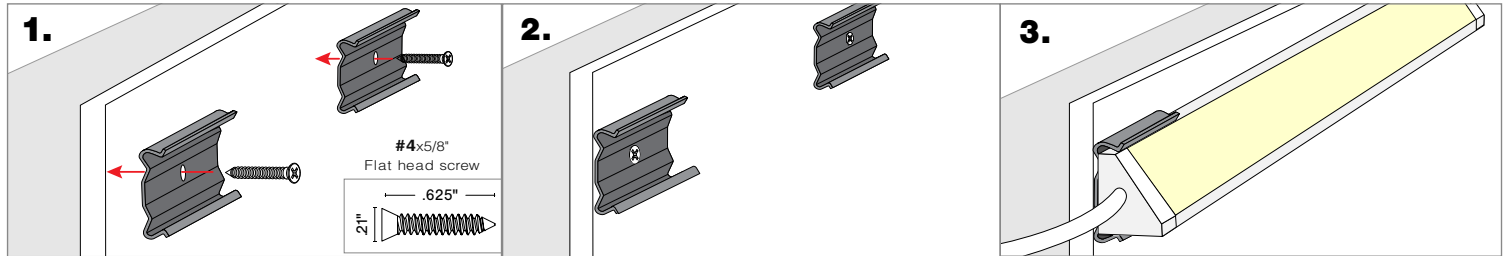
#6x5/8" Flat head screw
(Included)

Magnet Mount Accessory
(MMA)

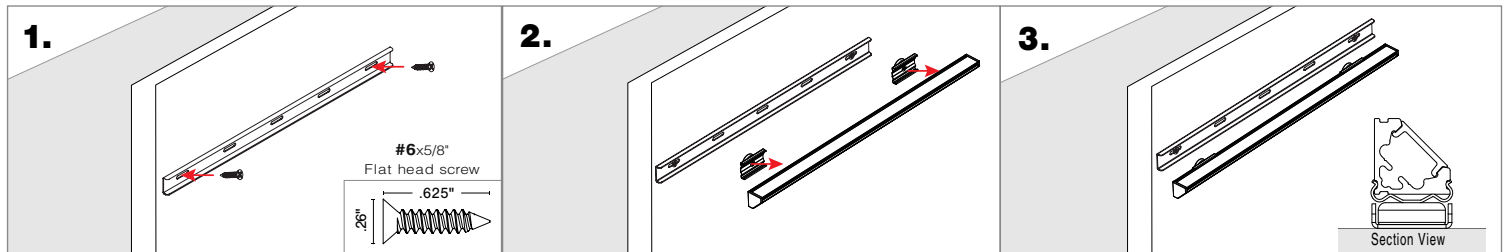


(Sold separately)

Screw Mounting



Magnet Mounting



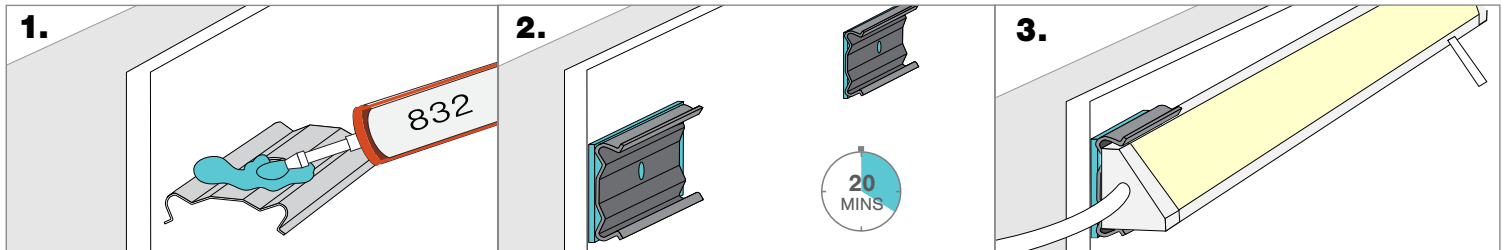
Using the #6 Flat head screws, mount two screws into the 12" magnet bracket through the slotted holes at each end

Attach the magnet clips onto the extrusion

Connect the assembled extrusion and its magnet clips to the magnet bracket, the install should match the section view

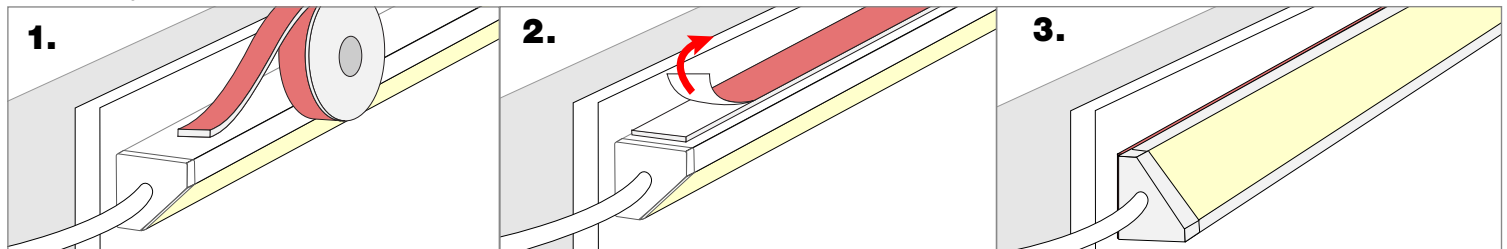
NOTE: The magnet clips should be offset to the flat heads used to secure the bracket, to maximize magnetic connection.

832 Silicone Mounting



NOTE: Apply silicone in a well ventilated area. 832 Silicone is sold with caulk gun. Do not use in any submersible applications.

VHB Mounting



NOTES: • Field modifications must comply with Q-Tran's installation methods otherwise warranty is null and void