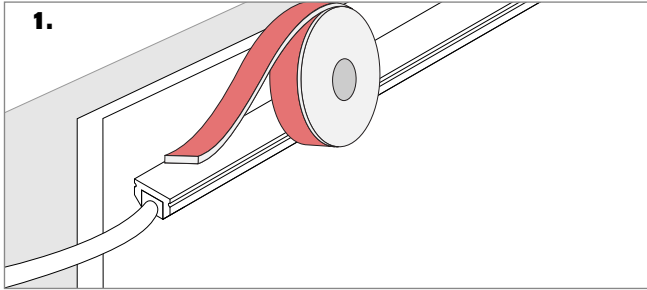


INSTALLATION

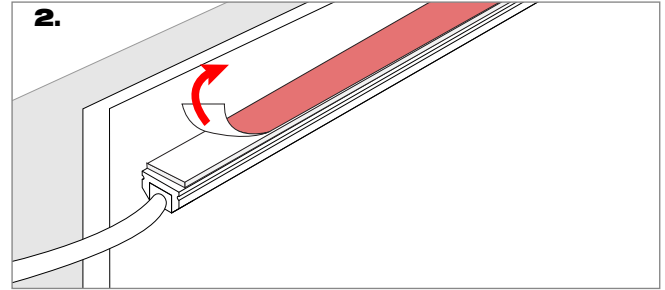
Q-CAP Flexible Fixtures: NEXUS



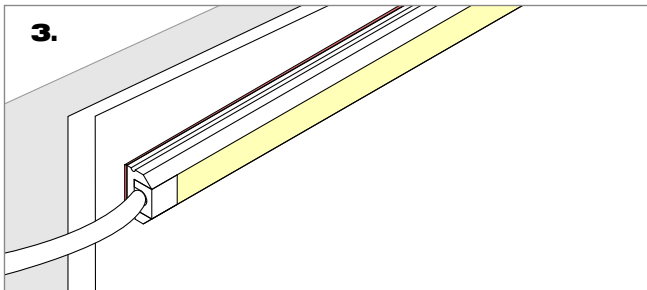
VHB MOUNTING



1. Remove the backing from the adhesive and apply firm pressure to the bonding surface.



2. Peel off secondary backing.



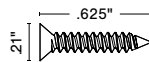
3. Adhere to mounting surface.

WHITE SNUG CLIP

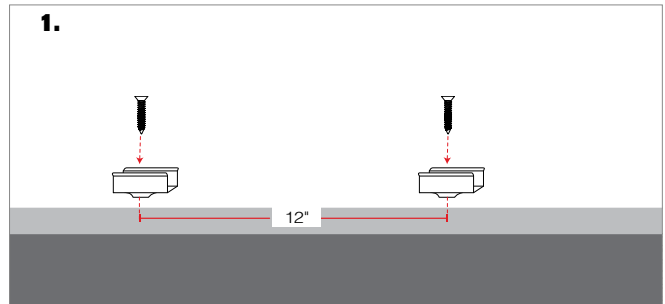
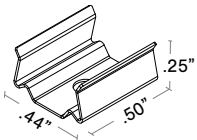
WSC-02

INCLUDED HARDWARE

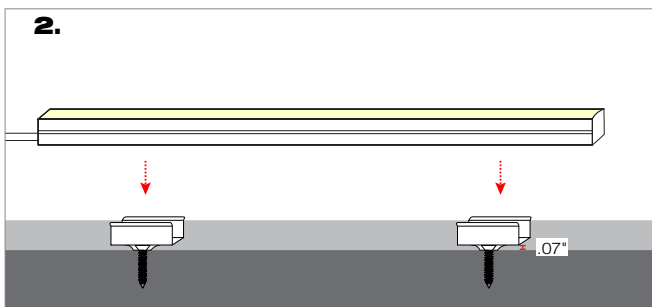
NOTE: White snug clip should be placed every 12"



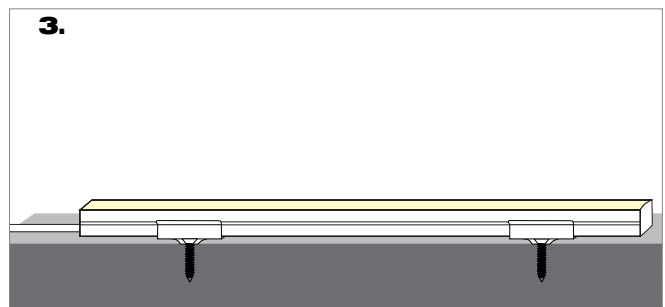
#4x5/8" Flat head screw



1. Mount white snug clip with provided flat head screw.



2. Align fixture to white snug clips matching distances.



3. Press fixture into white snug clips.