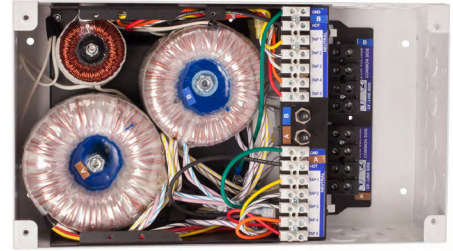


The QTMD is a dual power supply ranging from 300W-600W. Part of the QT Series, the quietest, most efficient, safest, most versatile, longest lasting power supplies in the industry, the QTMD comes standard with five taps to allow the installer to fine-tune the voltages at the transformer to get as close to the desired voltage at the fixture as possible. The QTMD is UL listed to be either surface or recess mounted into a 2"x4" stud wall with the ability to install in any thickness drywall.



Part Number Builder

Product	Size ¹	Prim. V	Sec. V	No.	Amp ²	Choke	Color ³	Options ³
QTMD								
XXXX								
	150 300	120 (60Hz) 230 (50/60Hz)* 277 (60Hz)*	12V 24V 5.5V* 120V*	1 2	5 10 12.5 15 20 25	CK-S CK-L	WH (Standard) BK	PL* DP* SP* N/A

EXAMPLE for 2x300:
 QTMD-300-120/12-2x15+CK-S
 XXXX-300-120/24-1x15+CK-S

* Not standard, call factory for pricing

Technical Information

¹ Size

Size	Max Load (Watts)	PSC Efficiency	Max PSC Rating (Watts)	Max PSC Rating (VA)	Max Prim Amps @ 120V	Max Prim Amps @ 277V
QTMD-2x150	300W	92%	324	350	3.0 A	0.14 A
QTMD-150/300	450W	93%	483	522	4.4 A	2.0 A
QTMD-2x300	600W	93%	624	694	5.8 A	2.6 A

² Secondary Breaker Amperage

Amps	Max 12V Load	Max 24V Load
5	60W	120W
10	120W	240W
12.5	150W	300W
15	180W	360W
20	240W	480W
25	300W	600W

³ Color

WH White (Standard)
BK* Black Powder Coat Finish

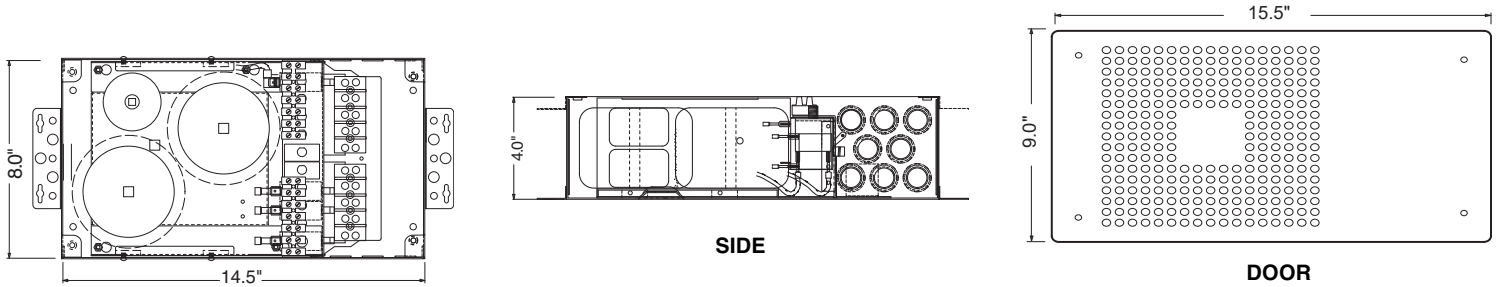
³ Options

PL* Plenum Rated
DP* Dimmer Plate
SP* Switch Plate

Choke

CK-S 150W-300W
CK-L 375W-600W





Housing

- 18-gauge welded steel enclosure: 8.0"W X 14.5"L X 4.0"D
- Door: 9.0"W X 15.5"L
- Color: white powder coating
- Knockouts: 21

Multi-Volt & Taps

Tap Options (in order from TAP1 to TAP5):

12V: 11, 12, 13, 14, 15V

24V: 22, 24, 26, 28, 30V

- Loads may be connected to one (1) of the primary taps up to the full watt rating of the PSC.
- The advantage is that loads at varying distances from the PSC can be tapped on different taps to recover voltage drop, allowing you to get the correct voltage at your load and produce between 85%-100% light output. (See Q-TRAN Voltage drop Calculator)
- Secondary Circuit Protection: 1-2 magnetic circuit breakers
- Class 1 compliant to N.E.C.

Toroidal Choke

Q-Tran's standard choke, or "debuzzing coil" reduces noise when dimming and helps negate in-rush current that is prevalent with LED loads. It allows for quiet operation and eliminates nuisance tripping.

- | | |
|--|--|
| <ul style="list-style-type: none"> • UL 2108 & 1598 listed • Surface, ceiling or wall mount • Recessed wall mount type IC • Suitable for use in insulated space — zero clearance • Suitable for use in closets with clothes in direct contact • Inherently protected type IC for supply connections use wire rated for at least 75°C | <ul style="list-style-type: none"> • Suitable for indoor use only • Suitable for damp locations • Use dimmers rated for magnetic low voltage load • Complies with N.E.C. article 411 • Isolation toroidal transformer • 50/60 cycle A.C. only • Made in the USA |
|--|--|

