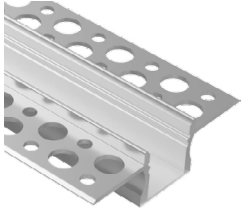


MDIN ALUMINUM EXTRUSION



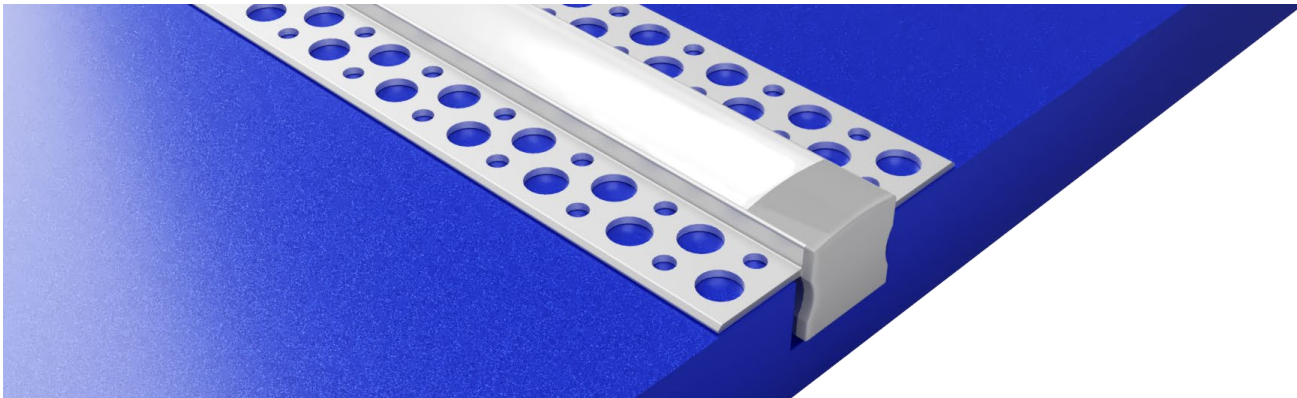
Finish

SATIN



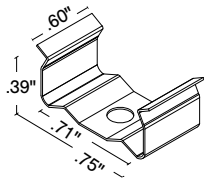
Satin anodized
Matte finish
Grey end caps

Mounting Type - Surface



Mounting - Hardware

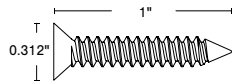
Stainless Steel Clip (SST-05)



2 clips provided for 4' or less;
4 clips provided for greater than 4'

- Stainless Steel
- Indoor/Outdoor
- #4 x 5/8" Flat Head SS
(1 per clip included)

Stainless Steel Screw



#8 x 1" Flat Head Screw

NOTE: Dry wall anchors are recommended.

- Stainless Steel
- Indoor/Outdoor

832



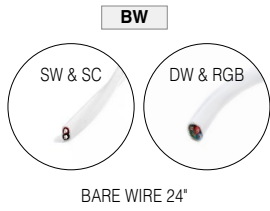
- Strong adhesive
- Non submersible, for dry and wet locations

Lens

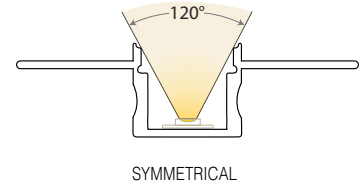
DF Diffused



Connectors/Wire



Light Orientation



TYPE To order a bare extrusion without a strip installed in Q-Tran factory, choose **NI** (Not Installed) for your Type option

