

VERS-GRAZER-SK (04) Linear Fixtures - Suspended



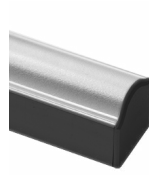
Fixture Finish

SATIN



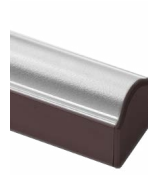
SATIN ANODIZED
MATTE FINISH
METAL ENDCAPS

BLACK



BLACK ANODIZED
MATTE FINISH
METAL ENDCAPS

BRONZE



BRONZE ANODIZED
MATTE FINISH
METAL ENDCAPS

WHITE



WHITE POWDER
COAT PAINT
GLOSSY FINISH
METAL ENDCAPS

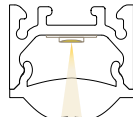
Mounting - Hardware

SK-01
Suspension Bracket

2 required up to 6' lengths;
additional support required
between 6' to 8'

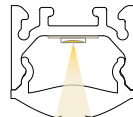
Suspension kits sold separately

Light Orientation



12°- 20°

SYMMETRICAL



24°- 36°

SYMMETRICAL

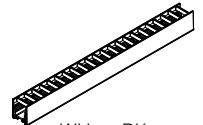
Compatible Accessory

Q-mini-J



Louver

L1-XX



WH BK
0.70 0.54
Lumen Multiplier

Compatible Power Supplies

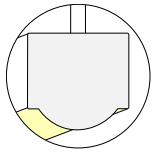
NOTE: Power supply compatibility is dependent on light engine chosen.

| QZ | iQ-PH-80 | QTM-DC | QTM-DC+CAP | QTM-eLED | QTM-DRIVE | QTM-eLED+WD | QTM-eLED+AW | QTM-eLED+DMX |
|----|----------|--------|------------|----------|-----------|-------------|-------------|--------------|
| | | | | | | | | |

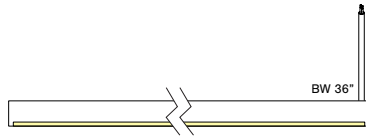
VERS-GRAZER-SK (04) Linear Fixtures - Suspended



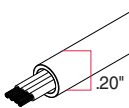
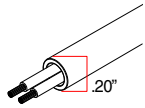
Input/Output



S2 - Input only



Connectors/Wire



SW, SW-HE, SC
wire shown

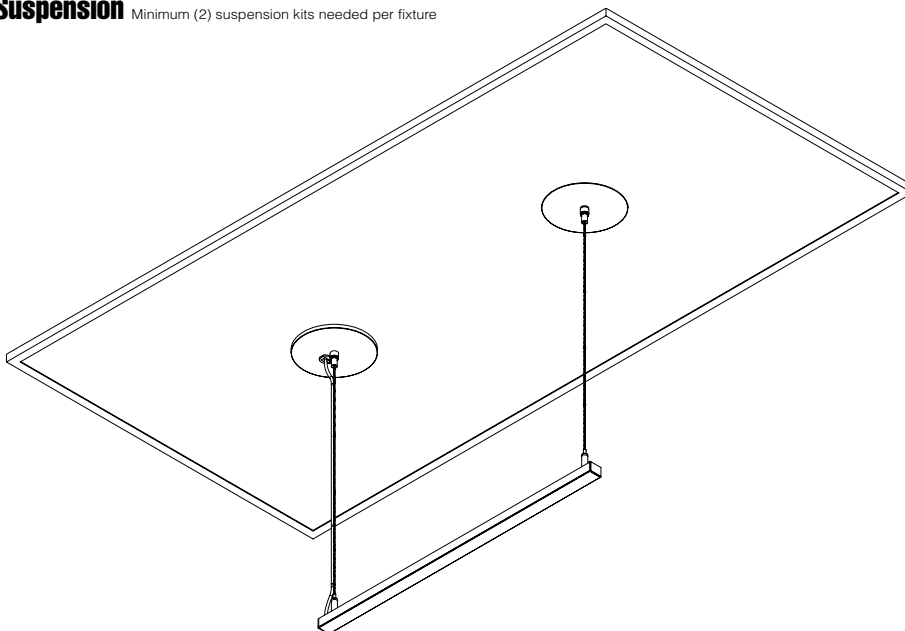
DW, RGB
wire shown

SUSPENSION WIRE

- 22 AWG
- Clear outer jacket
- Metal shield
- DRY / DMP
- 36" Standard length

Suspension

Minimum (2) suspension kits needed per fixture



Close-Up

