

# Photometric Details



SW-HE+24-6.0-DRY-27

**Product name:**  
SW-HE+24-6.0-DRY-27

**Date:**  
12/4/2019

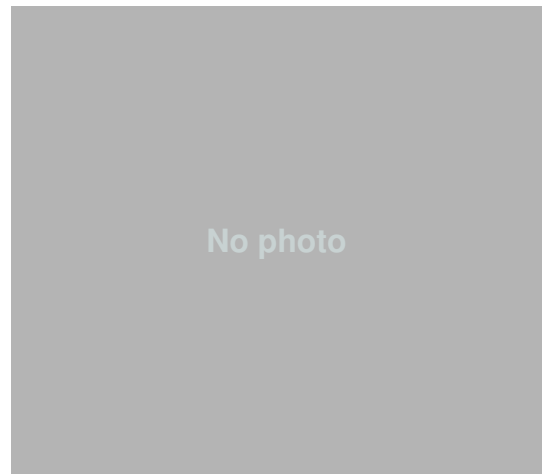
**Powering product:**  
IQ-PH-80-120/24

**Output:** 1091 lm/ft

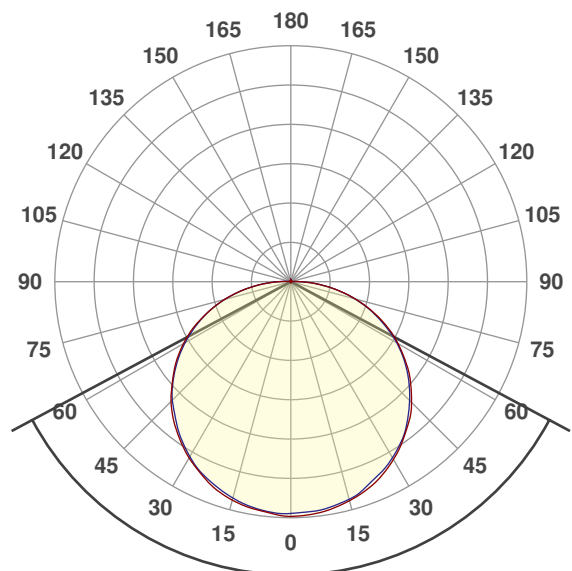
**Peak:** 331 cd

**Power:** 6.2 W/ft

**PF:** 1.0



## Beam Angle



**123.7°**

CIE 1931  
x: 0.455  
y: 0.409



## Light efficiency:



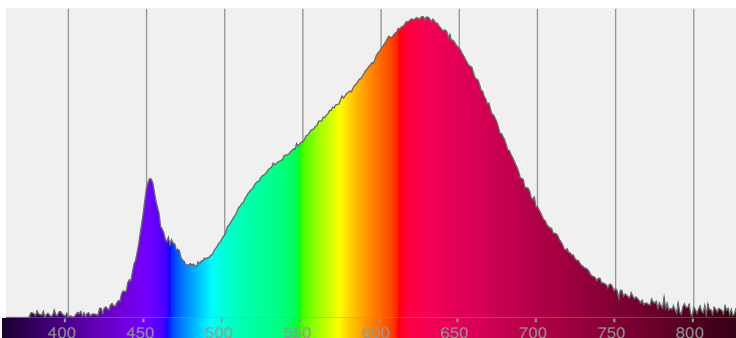
## Light quality:



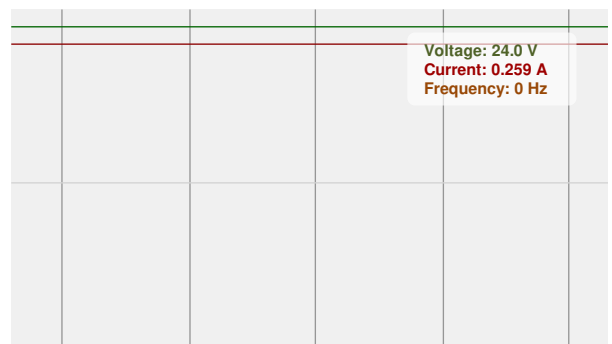
## Color temperature:



## Spectra



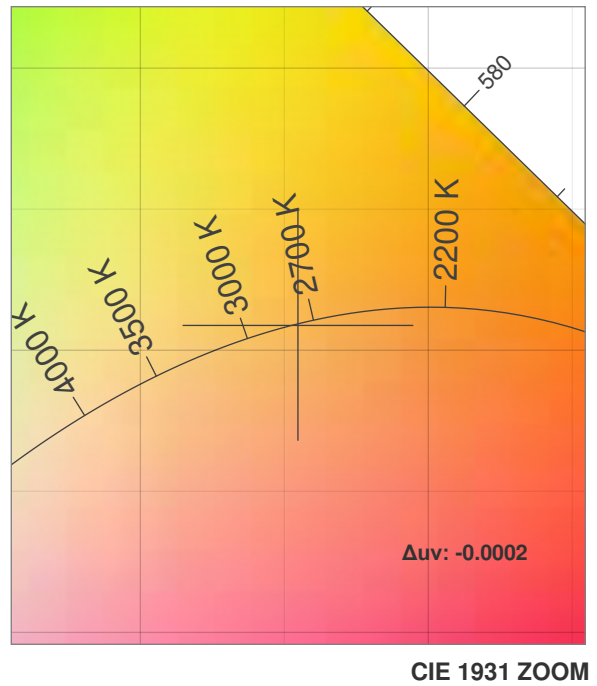
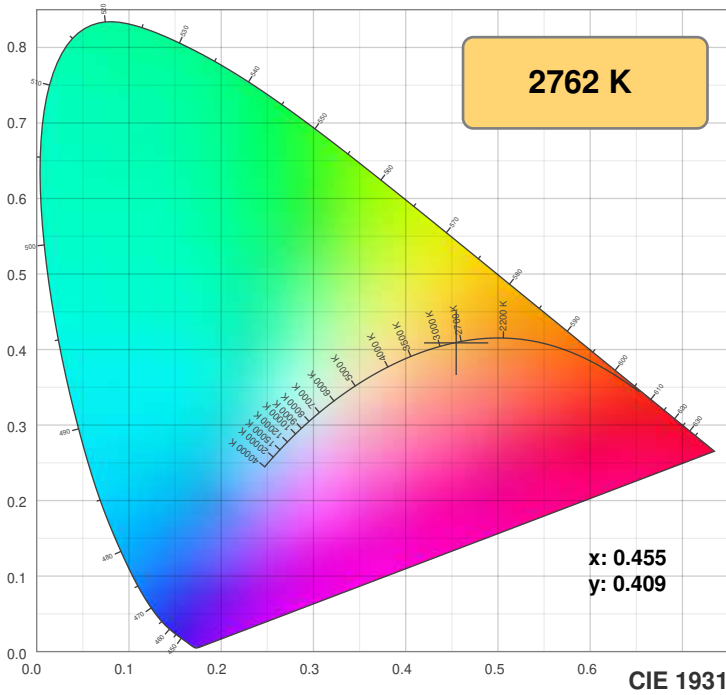
## Power



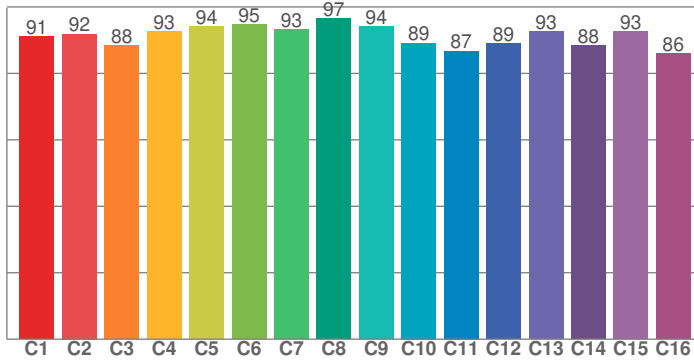
# Color Details



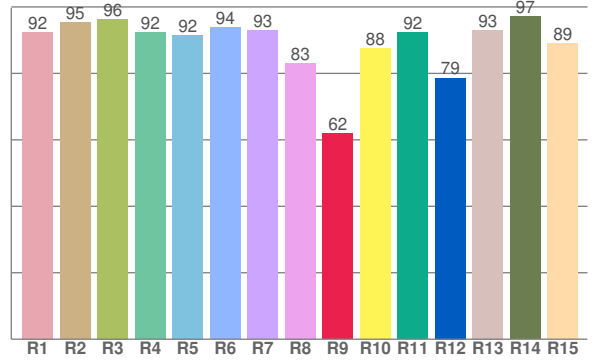
SW-HE+24-6.0-DRY-27



**TM30: 91.2**



**CRI: 92.2 (R1-R8)**



CRI R values, only R1-R8 are used to calculate final CRI value

R1	R2	R3	R4	R5	R6	R7	R8	R9	R10	R11	R12	R13	R14	R15
92.5	95.3	96.4	92.3	91.5	93.8	92.9	83.1	61.9	87.6	92.4	78.7	93.1	97.1	89.0

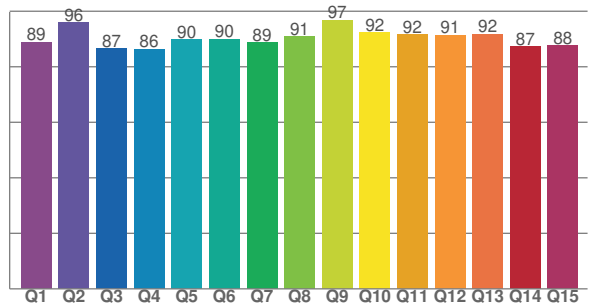
TM30 C values, 16 binned values out of total of 99 C values

C1	C2	C3	C4	C5	C6	C7	C8	C9	C10	C11	C12	C13	C14	C15	C16
91.1	91.9	88.5	92.7	94.2	94.8	93.2	96.5	94.2	89.2	86.8	89.1	92.6	88.5	92.6	86.0

CQS Q values

Q1	Q2	Q3	Q4	Q5	Q6	Q7	Q8	Q9	Q10	Q11	Q12	Q13	Q14	Q15
88.9	95.9	86.5	86.3	89.8	90.0	88.7	90.8	96.8	92.3	91.6	91.5	91.7	87.2	87.6

**CQS: 89.8**



## Color parameters

Color temperature	Color rendering index	Red component	Color fidelity	Color gamut	Color quality scale	Color coordinate cie 1931	Color coordinate cie 1931	Color coordinate	Color coordinate	Color deviation from black body
CCT	CRI	CRI R9	TM30 Rf	TM30 Rg	CQS	x	y	u	v	Δuv
2762 K	92.2	61.9	91.2	99.9	89.8	0.455	0.409	0.260	0.351	-0.0002

# TM30 Details

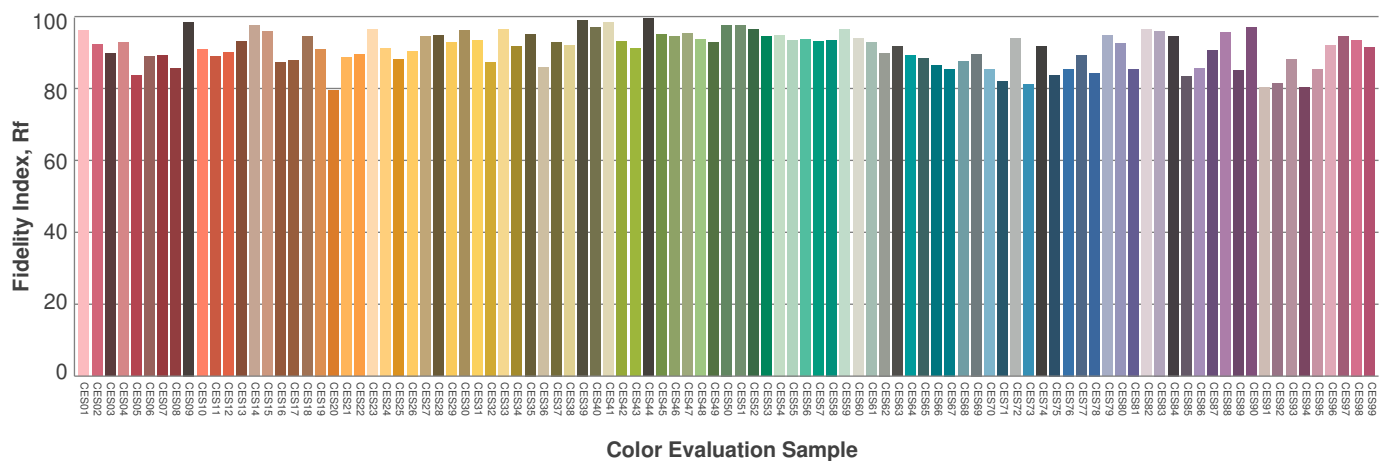
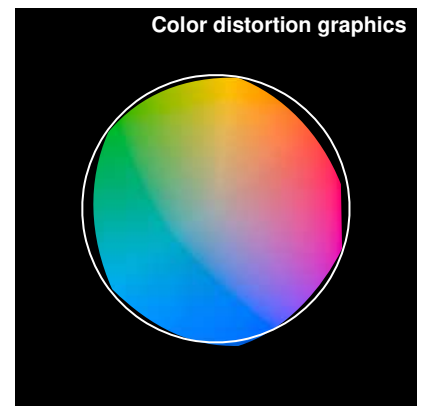
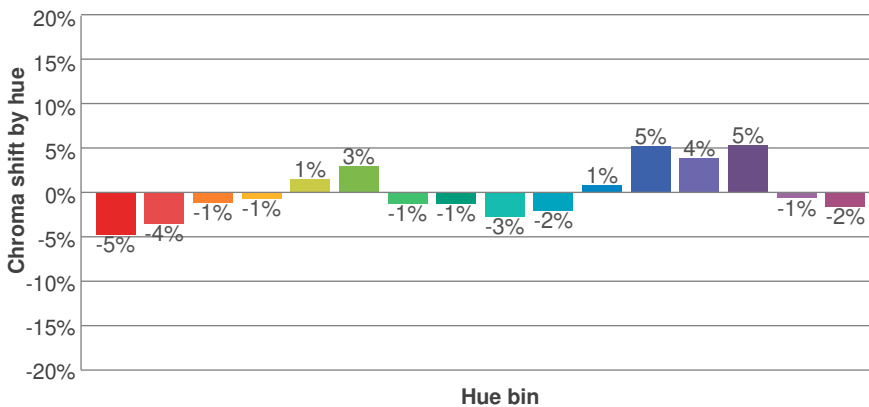
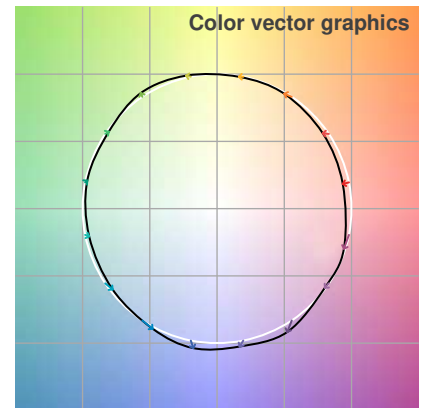
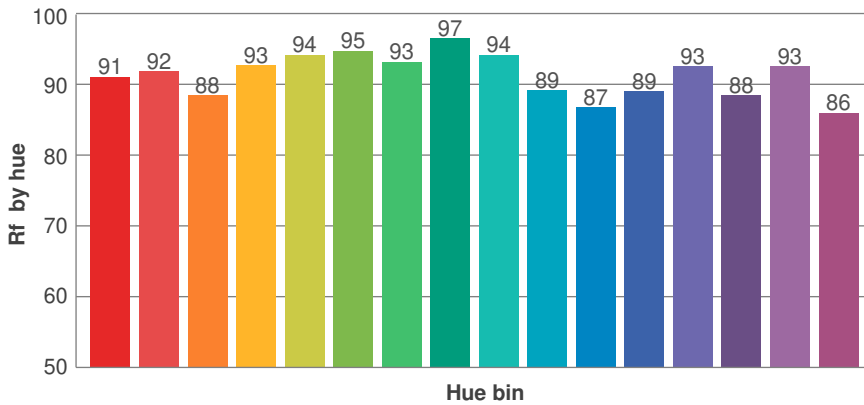
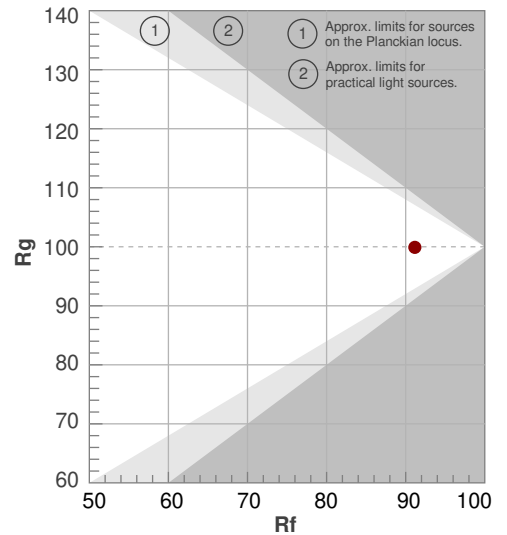


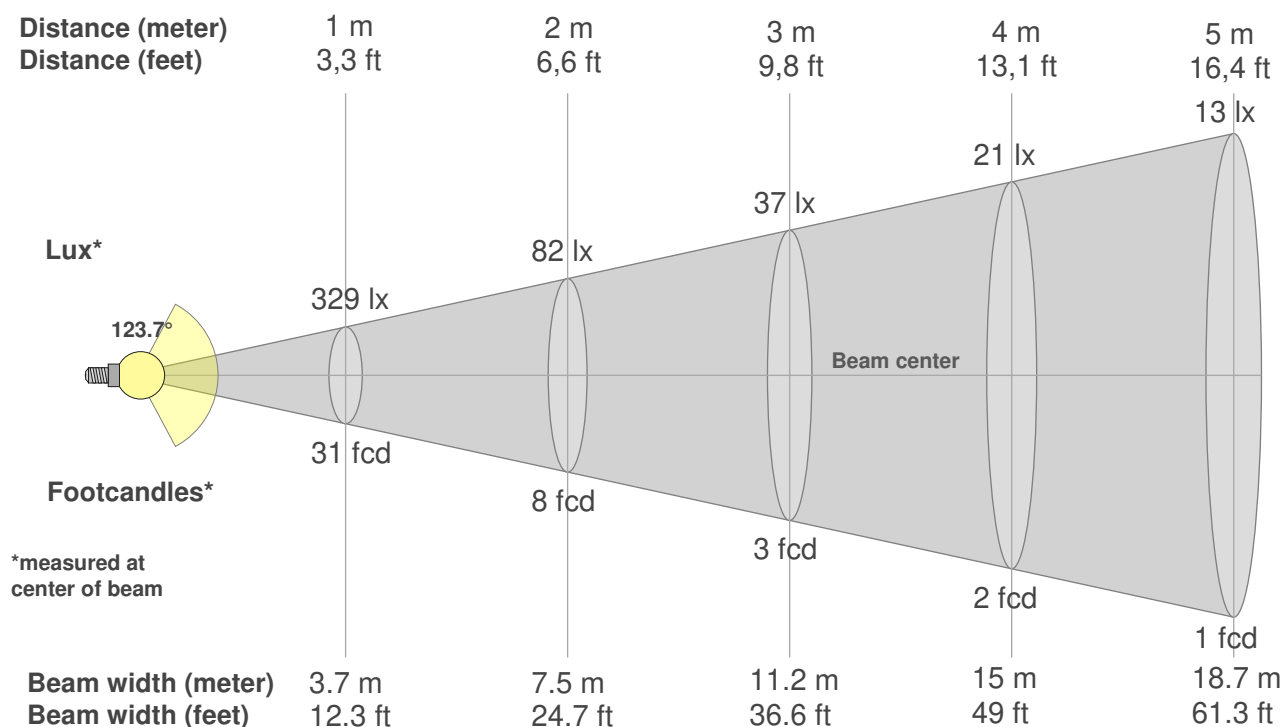
SW-HE+24-6.0-DRY-27

**Rf 91.2**  
Fidelity index Rf

**Rg 99.9**  
Gammut index Rg

Hue Bin	Rf	Graphic shifts (%)	
		Chroma	Hue
1	91	-5%	0%
2	92	-4%	3%
3	88	-1%	6%
4	93	-1%	3%
5	94	1%	3%
6	95	3%	-1%
7	93	-1%	-3%
8	97	-1%	-2%
9	94	-3%	2%
10	89	-2%	7%
11	87	1%	10%
12	89	5%	3%
13	93	4%	-3%
14	88	5%	-8%
15	93	-1%	-4%
16	86	-2%	-11%





**Beam intensities from 1-20m**

1m	2m	3m	4m	5m	6m	7m	8m	9m	10m	11m	12m	13m	14m	15m	16m	17m	18m	19m	20m
3.3ft	6.6ft	9.8ft	13.1ft	16.4ft	19.7ft	23ft	26.2ft	29.5ft	32.8ft	36.1ft	39.4ft	42.7ft	45.9ft	49.2ft	52.5ft	55.8ft	59.1ft	62.3ft	65.6ft
329lx	82lx	37lx	21lx	13lx	9lx	7lx	5lx	4lx	3lx	3lx	2lx	2lx	2lx	1lx	1lx	1lx	1lx	1lx	1lx
30.6fcd	7.6fcd	3.4fcd	1.9fcd	1.2fcd	0.8fcd	0.6fcd	0.5fcd	0.4fcd	0.3fcd	0.3fcd	0.2fcd	0.2fcd	0.2fcd	0.1fcd	0.1fcd	0.1fcd	0.1fcd	0.1fcd	0.1fcd

**Intensities in 0° c-plane**

0°	5°	10°	15°	20°	25°	30°	35°	40°	45°	50°	55°	60°	65°	70°	75°	80°	85°	90°	95°
329	329	326	320	312	302	290	275	259	241	220	198	175	150	123	94	66	39	16	3
100%	100%	99%	97%	95%	92%	88%	84%	79%	73%	67%	60%	53%	45%	37%	29%	20%	12%	5%	1%

**Intensities in 90° c-plane**

0°	5°	10°	15°	20°	25°	30°	35°	40°	45°	50°	55°	60°	65°	70°	75°	80°	85°	90°	95°
329	326	323	318	309	298	287	273	256	237	217	196	173	147	121	93	65	38	14	2
100%	99%	98%	97%	94%	91%	87%	83%	78%	72%	66%	60%	52%	45%	37%	28%	20%	11%	4%	0%

**Intensities in 180° c-plane**

0°	5°	10°	15°	20°	25°	30°	35°	40°	45°	50°	55°	60°	65°	70°	75°	80°	85°	90°	95°
329	328	324	319	311	299	287	272	257	239	218	198	175	151	124	97	69	42	19	4
100%	100%	99%	97%	95%	91%	87%	83%	78%	73%	66%	60%	53%	46%	38%	30%	21%	13%	6%	1%

**Intensities in 270° c-plane**

0°	5°	10°	15°	20°	25°	30°	35°	40°	45°	50°	55°	60°	65°	70°	75°	80°	85°	90°	95°
329	326	322	316	307	298	285	270	253	236	217	195	172	148	123	96	69	41	18	4
100%	99%	98%	96%	93%	91%	87%	82%	77%	72%	66%	59%	52%	45%	37%	29%	21%	13%	6%	1%

Beam angle 50%	Field angle 10%	Cutoff angle 2,5%	Intensity ratio in 120° cone	Intensity ratio in 90° cone
123.7°	172.8°	185.3°	72.3%	47.8%

# Photometric Details



SW-HE+24-6.0-DRY-30

**Product name:**  
SW-HE+24-6.0-DRY-30

**Date:**  
12/4/2019

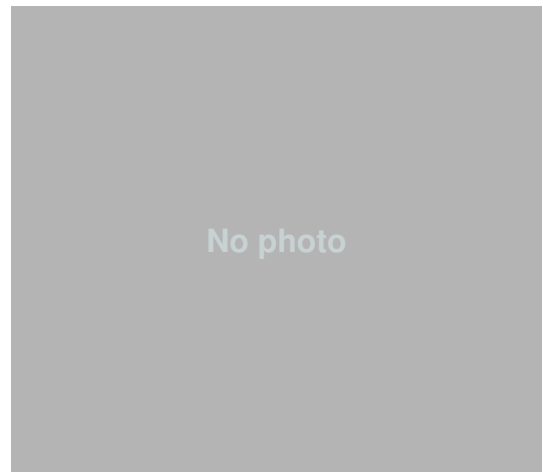
**Powering product:**  
IQ-PH-80-120/24

**Output:** 1085 lm/ft

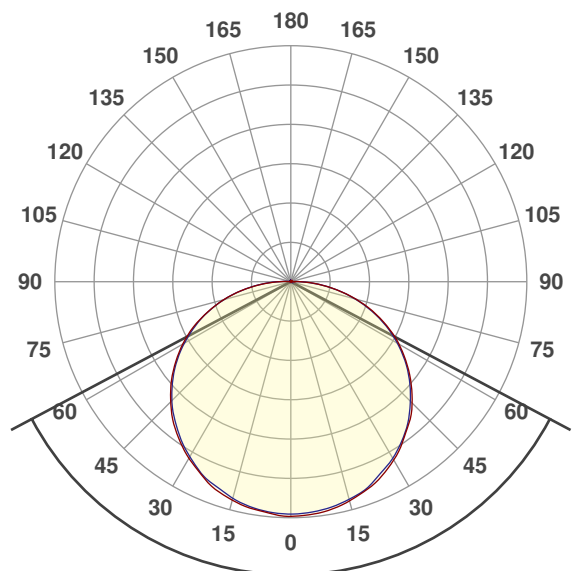
**Peak:** 328 cd

**Power:** 6.2 W/ft

**PF:** 1.0



## Beam Angle



124.1°

CIE 1931  
x: 0.435  
y: 0.400



## Light efficiency:



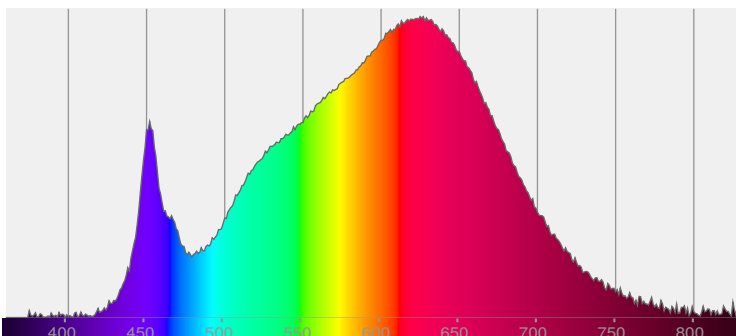
## Light quality:



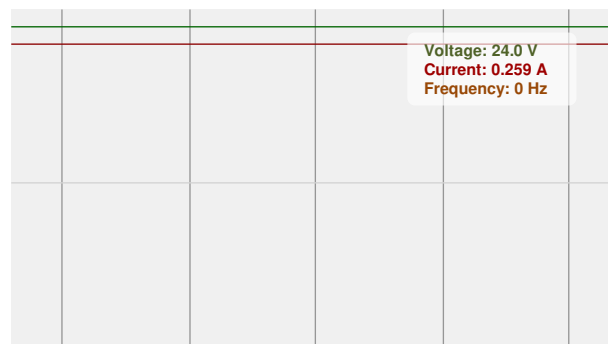
## Color temperature:



## Spectra



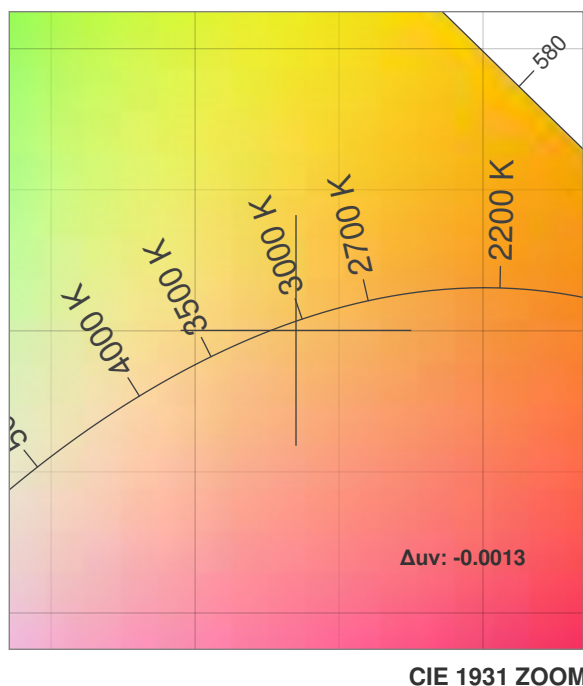
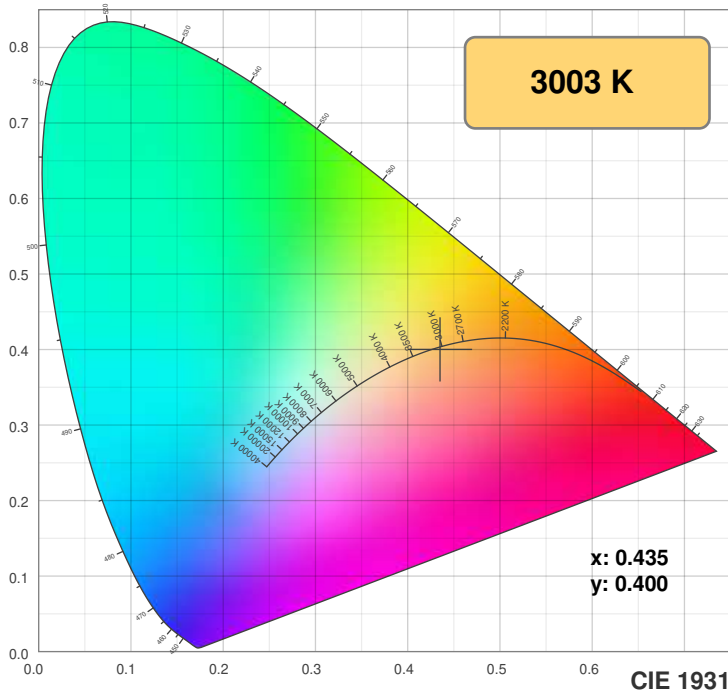
## Power



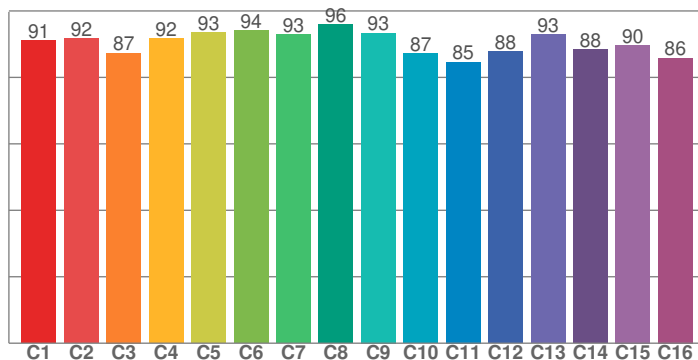
# Color Details



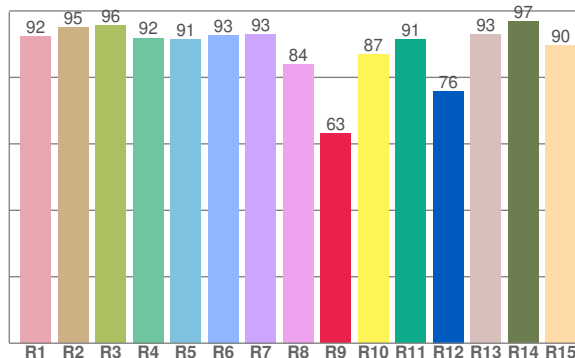
SW-HE+24-6.0-DRY-30



**TM30: 90.4**



**CRI: 92.0 (R1-R8)**



CRI R values, only R1-R8 are used to calculate final CRI value

R1	R2	R3	R4	R5	R6	R7	R8	R9	R10	R11	R12	R13	R14	R15
92.4	95.0	95.6	91.9	91.4	92.7	93.0	84.0	63.1	86.9	91.5	75.9	93.0	96.8	89.7

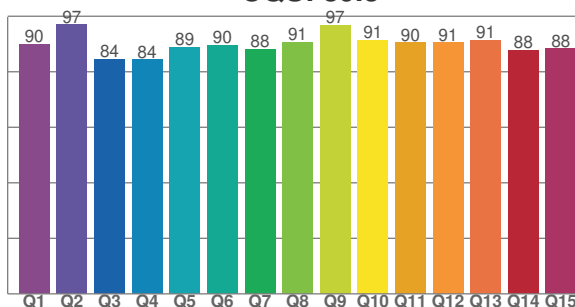
TM30 C values, 16 binned values out of total of 99 C values

C1	C2	C3	C4	C5	C6	C7	C8	C9	C10	C11	C12	C13	C14	C15	C16
91.1	91.6	87.3	91.6	93.5	94.1	92.9	96.0	93.4	87.2	84.7	87.9	92.9	88.3	89.7	85.9

CQS Q values

Q1	Q2	Q3	Q4	Q5	Q6	Q7	Q8	Q9	Q10	Q11	Q12	Q13	Q14	Q15
89.9	97.0	84.5	84.4	89.0	89.7	88.1	90.7	96.8	91.5	90.5	90.5	91.3	87.8	88.3

**CQS: 89.3**



## Color parameters

Color temperature	Color rendering index	Red component	Color fidelity	Color gamut	Color quality scale	Color coordinate cie 1931	Color coordinate cie 1931	Color coordinate	Color coordinate	Color deviation from black body
CCT	CRI	CRI R9	TM30 Rf	TM30 Rg	CQS	x	y	u	v	Δuv
3003 K	92.0	63.1	90.4	100.5	89.3	0.435	0.400	0.251	0.346	-0.0013

# TM30 Details

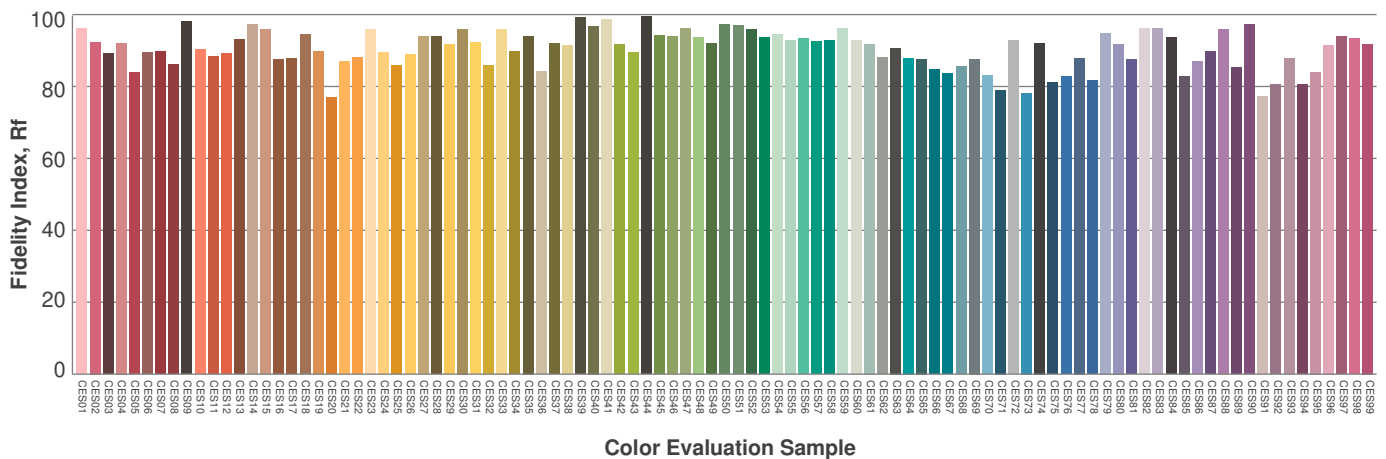
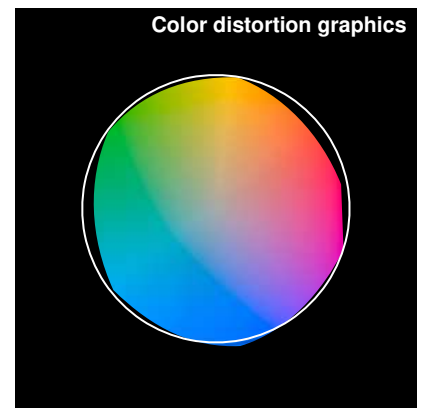
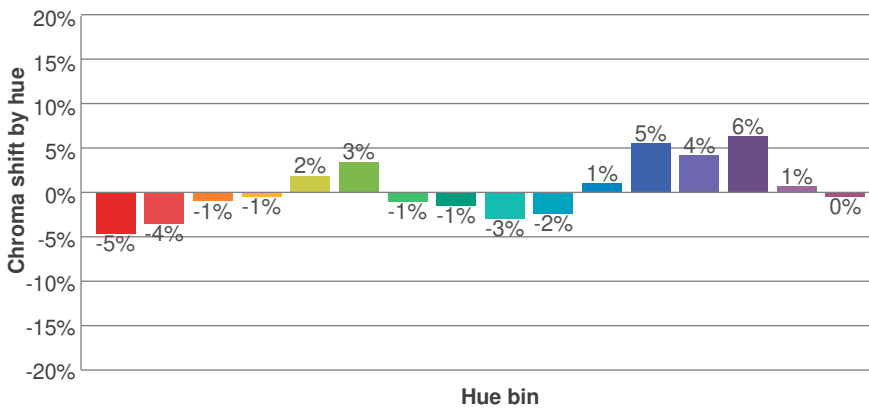
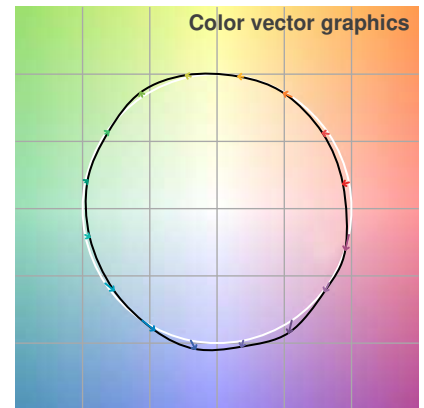
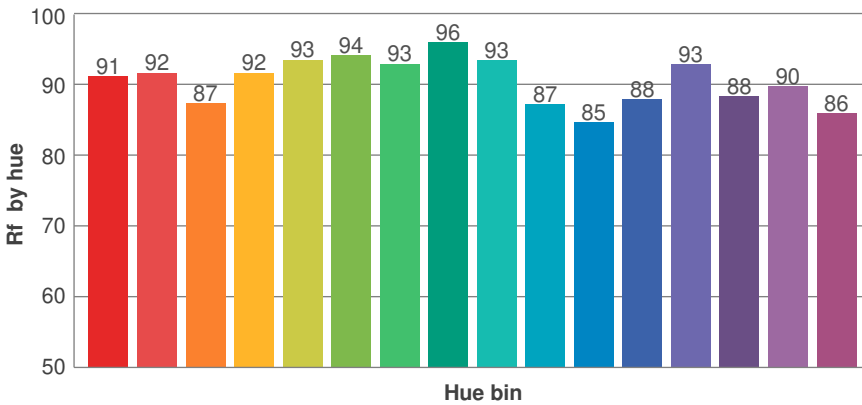
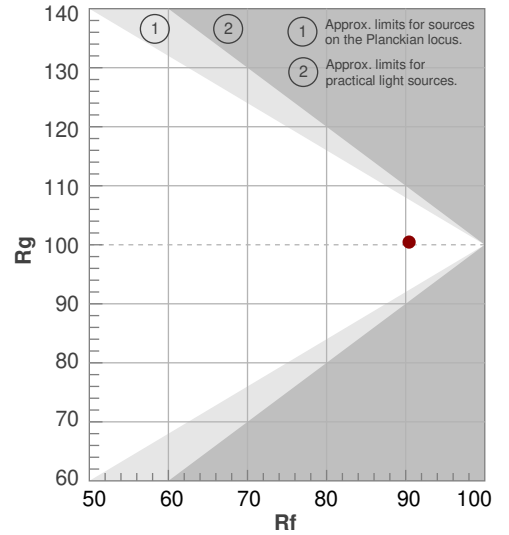


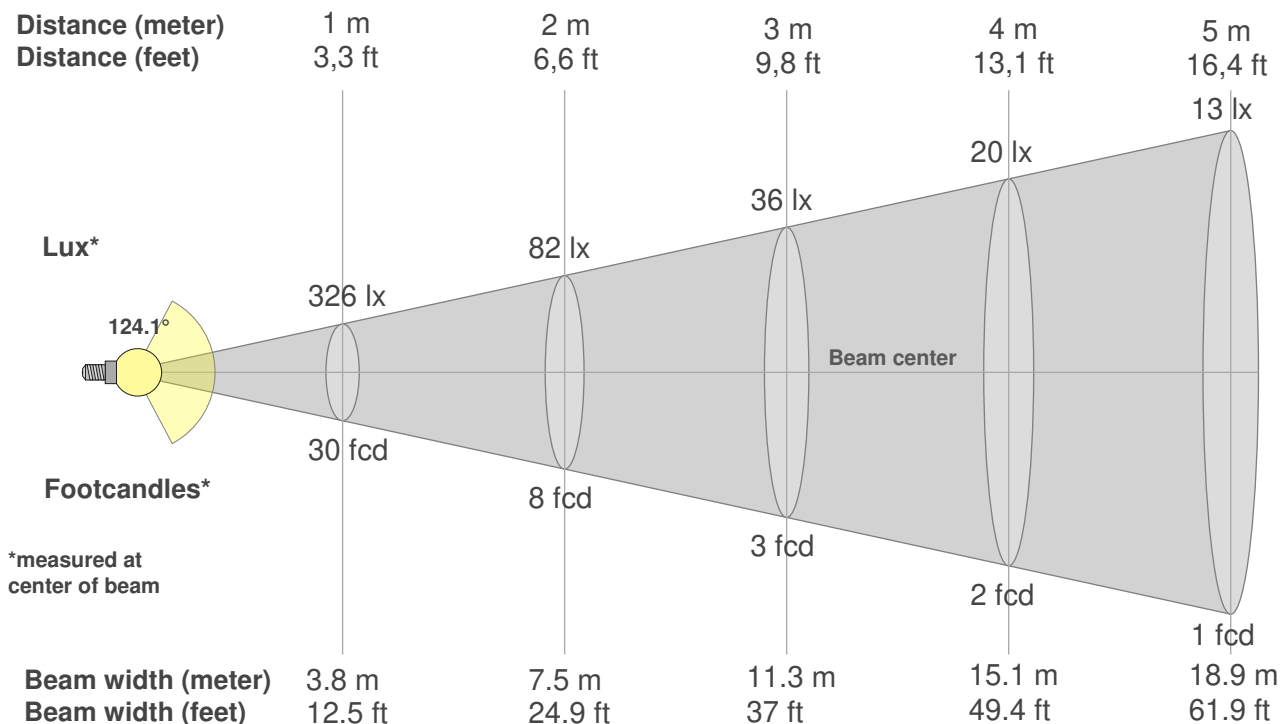
SW-HE+24-6.0-DRY-30

**Rf 90.4**  
Fidelity index Rf

**Rg 100.5**  
Gammut index Rg

Hue Bin	R <sub>f</sub>	Graphic shifts (%)	
		Chroma	Hue
1	91	-5%	0%
2	92	-4%	3%
3	87	-1%	6%
4	92	-1%	4%
5	93	2%	3%
6	94	3%	-1%
7	93	-1%	-3%
8	96	-1%	-2%
9	93	-3%	2%
10	87	-2%	8%
11	85	1%	11%
12	88	5%	4%
13	93	4%	-2%
14	88	6%	-7%
15	90	1%	-7%
16	86	0%	-11%





**Beam intensities from 1-20m**

1m	2m	3m	4m	5m	6m	7m	8m	9m	10m	11m	12m	13m	14m	15m	16m	17m	18m	19m	20m
3.3ft	6.6ft	9.8ft	13.1ft	16.4ft	19.7ft	23ft	26.2ft	29.5ft	32.8ft	36.1ft	39.4ft	42.7ft	45.9ft	49.2ft	52.5ft	55.8ft	59.1ft	62.3ft	65.6ft
326lx	82lx	36lx	20lx	13lx	9lx	7lx	5lx	4lx	3lx	3lx	2lx	2lx	2lx	1lx	1lx	1lx	1lx	1lx	1lx
30.3fcd	7.6fcd	3.4fcd	1.9fcd	1.2fcd	0.8fcd	0.6fcd	0.5fcd	0.4fcd	0.3fcd	0.3fcd	0.2fcd	0.2fcd	0.2fcd	0.1fcd	0.1fcd	0.1fcd	0.1fcd	0.1fcd	0.1fcd

**Intensities in 0° c-plane**

0°	5°	10°	15°	20°	25°	30°	35°	40°	45°	50°	55°	60°	65°	70°	75°	80°	85°	90°	95°
326	326	323	317	309	300	288	273	257	240	219	197	174	149	123	94	65	38	15	3
100%	100%	99%	97%	95%	92%	88%	84%	79%	73%	67%	60%	53%	46%	38%	29%	20%	12%	5%	1%

**Intensities in 90° c-plane**

0°	5°	10°	15°	20°	25°	30°	35°	40°	45°	50°	55°	60°	65°	70°	75°	80°	85°	90°	95°
326	323	320	315	308	296	285	271	255	236	217	195	172	147	121	93	65	37	14	2
100%	99%	98%	97%	94%	91%	87%	83%	78%	72%	66%	60%	53%	45%	37%	28%	20%	11%	4%	1%

**Intensities in 180° c-plane**

0°	5°	10°	15°	20°	25°	30°	35°	40°	45°	50°	55°	60°	65°	70°	75°	80°	85°	90°	95°
326	325	322	316	308	297	285	271	256	237	218	197	174	151	124	97	69	41	18	3
100%	100%	99%	97%	95%	91%	87%	83%	78%	73%	67%	60%	53%	46%	38%	30%	21%	13%	5%	1%

**Intensities in 270° c-plane**

0°	5°	10°	15°	20°	25°	30°	35°	40°	45°	50°	55°	60°	65°	70°	75°	80°	85°	90°	95°
326	323	320	313	305	295	282	268	252	235	215	195	172	148	123	96	69	42	19	5
100%	99%	98%	96%	93%	91%	87%	82%	77%	72%	66%	60%	53%	45%	38%	30%	21%	13%	6%	1%

Beam angle 50%	Field angle 10%	Cutoff angle 2,5%	Intensity ratio in 120° cone	Intensity ratio in 90° cone
124.1°	172.8°	185.1°	72.3%	47.7%



# Photometric Details

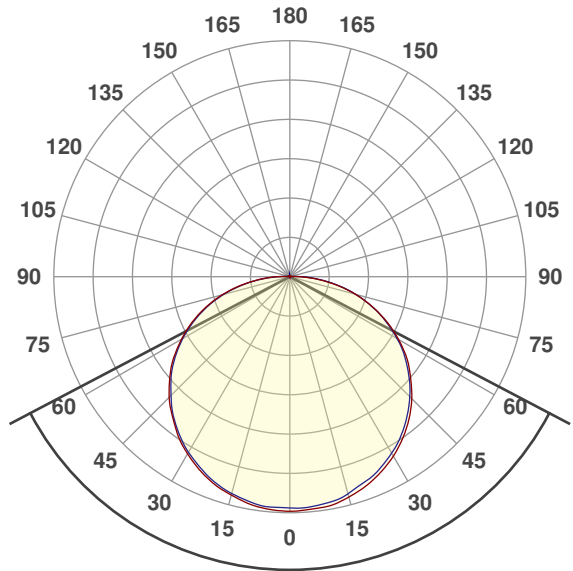


SW-HE+24-6.0-DRY-35

<b>Product name:</b>	SW-HE+24-6.0-DRY-35
<b>Date:</b>	12/4/2019
<b>Powering product:</b>	IQ-PH-80-120/24
<hr/>	
<b>Output:</b>	1114 lm/ft
<b>Peak:</b>	335 cd
<b>Power:</b>	6.0 W/ft
<b>PF:</b>	1.0



## Beam Angle



**124.5°**

CIE 1931  
x: 0.400  
y: 0.387



## Light efficiency:



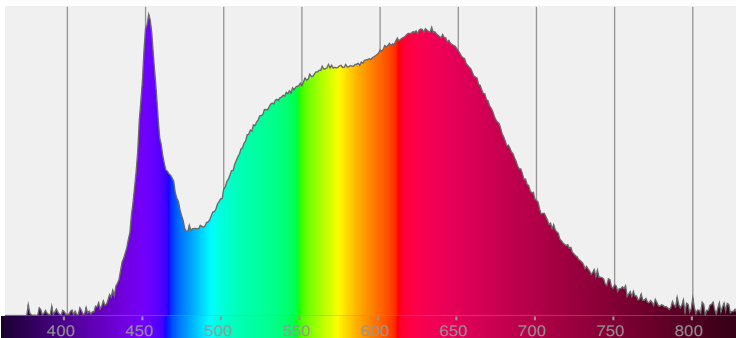
## Light quality:



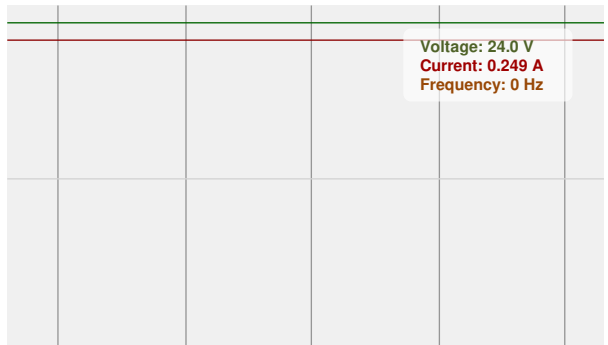
## Color temperature:



## Spectra



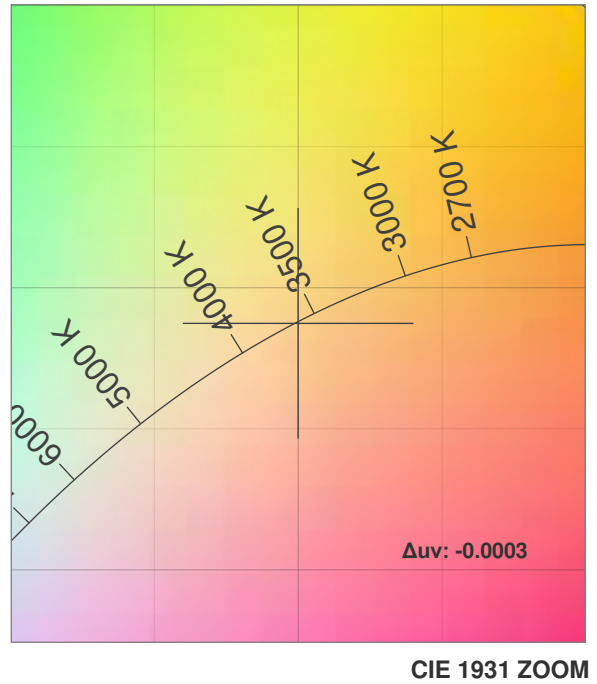
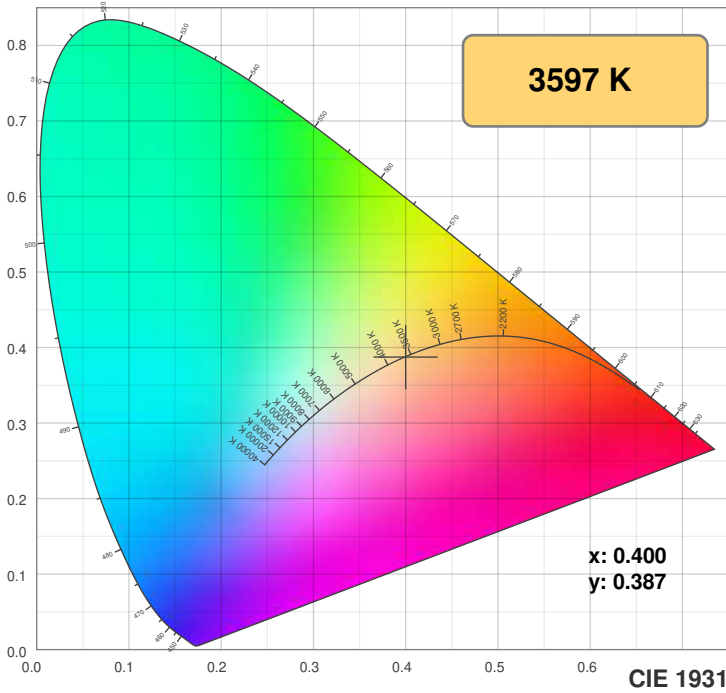
## Power



# Color Details

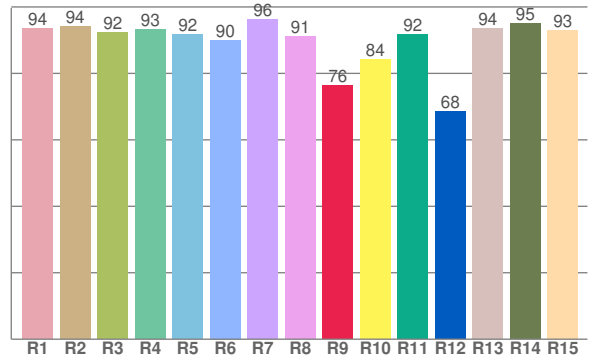
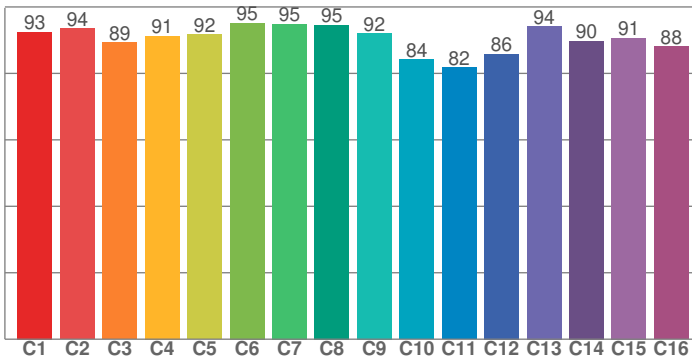


SW-HE+24-6.0-DRY-35



**TM30: 90.4**

**CRI: 92.8 (R1-R8)**



CRI R values, only R1-R8 are used to calculate final CRI value

R1	R2	R3	R4	R5	R6	R7	R8	R9	R10	R11	R12	R13	R14	R15
93.6	94.1	92.2	93.2	91.8	90.0	96.3	91.2	76.3	84.1	91.8	68.5	93.5	95.0	93.0

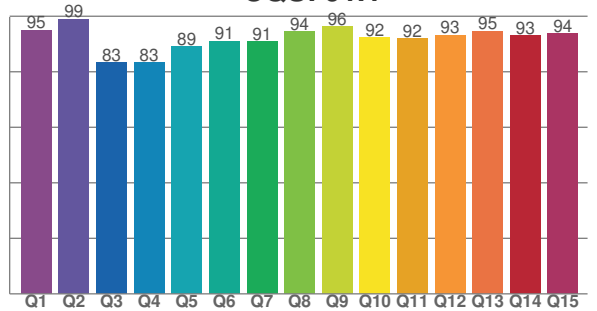
TM30 C values, 16 binned values out of total of 99 C values

C1	C2	C3	C4	C5	C6	C7	C8	C9	C10	C11	C12	C13	C14	C15	C16
92.5	93.6	89.3	91.3	91.7	95.1	94.8	94.6	92.1	84.2	81.8	85.9	94.2	89.8	90.7	88.0

CQS Q values

Q1	Q2	Q3	Q4	Q5	Q6	Q7	Q8	Q9	Q10	Q11	Q12	Q13	Q14	Q15
95.0	99.0	83.3	83.3	89.1	91.0	90.8	94.4	96.2	92.3	91.9	93.3	94.7	93.0	93.7

**CQS: 91.1**



## Color parameters

Color temperature	Color rendering index	Red component	Color fidelity	Color gamut	Color quality scale	Color coordinate cie 1931	Color coordinate cie 1931	Color coordinate	Color coordinate	Color deviation from black body
CCT	CRI	CRI R9	TM30 Rf	TM30 Rg	CQS	x	y	u	v	Δuv
3597 K	92.8	76.3	90.4	100.3	91.1	0.400	0.387	0.234	0.339	-0.0003

# TM30 Details

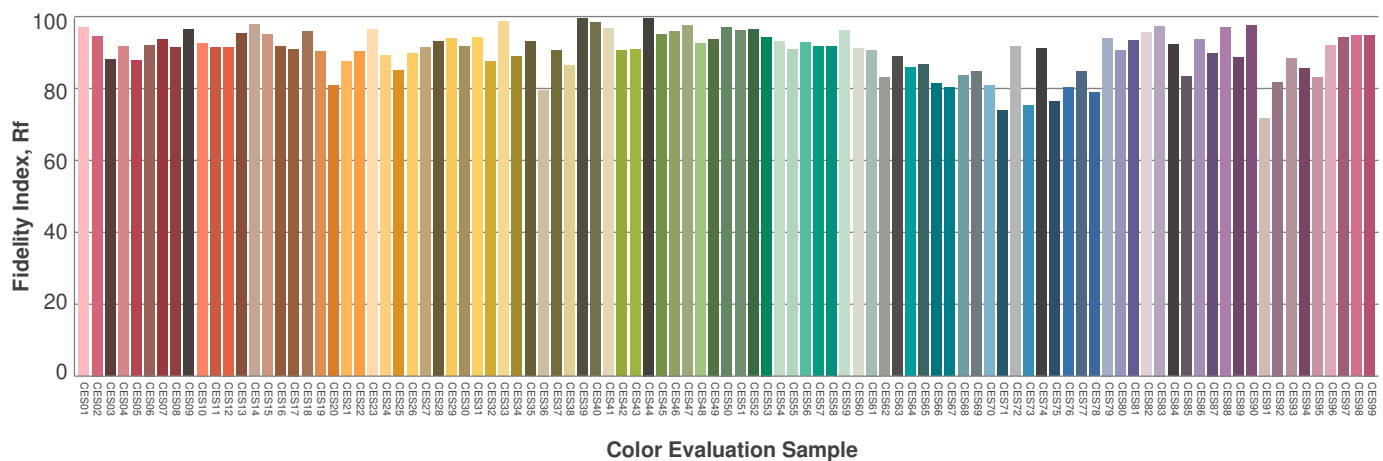
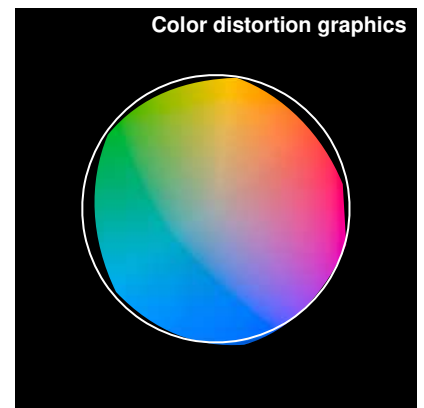
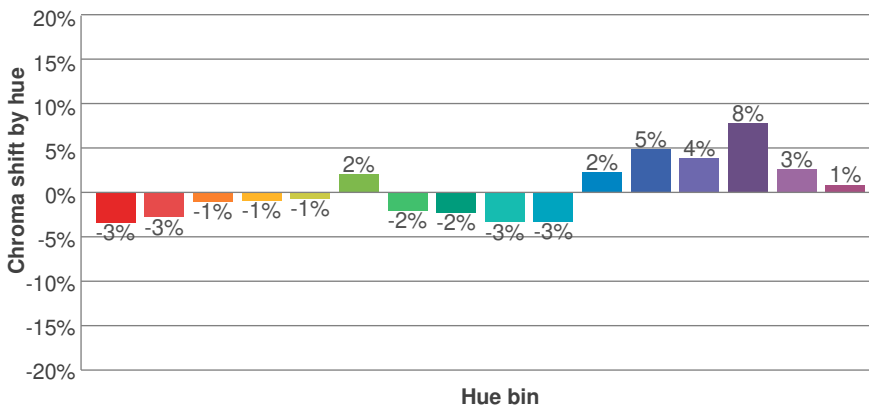
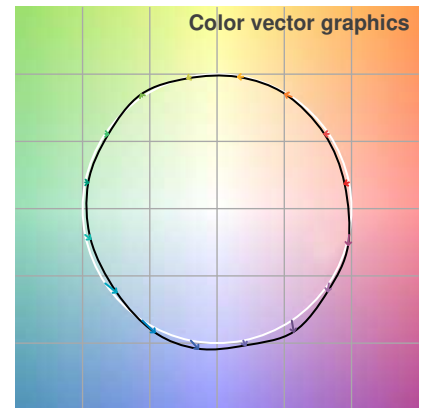
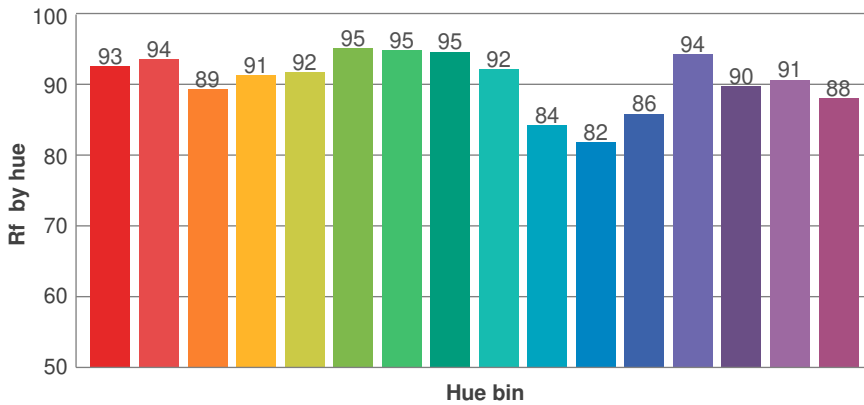
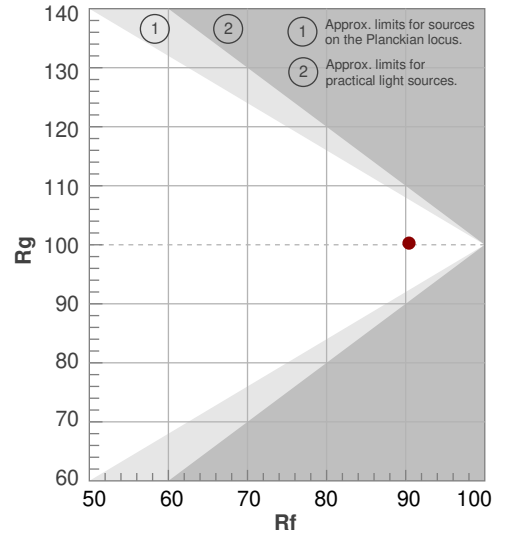


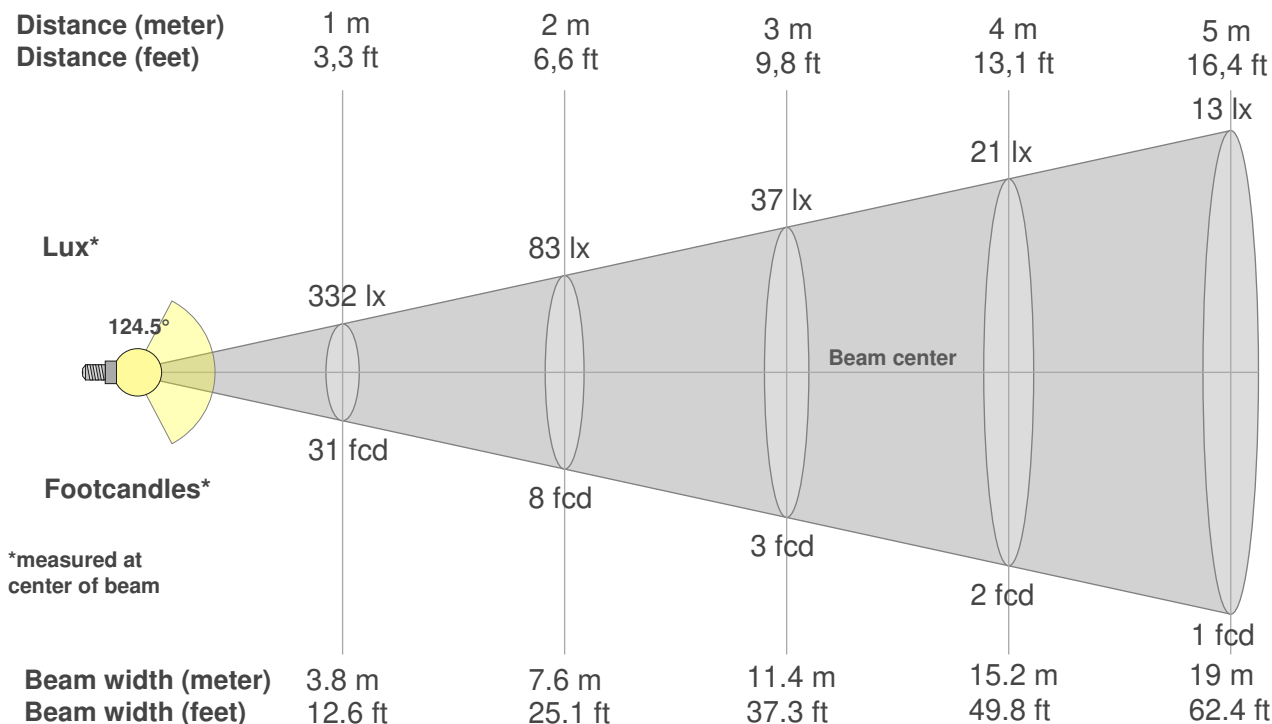
SW-HE+24-6.0-DRY-35

**Rf 90.4**  
Fidelity index Rf

**Rg 100.3**  
Gammut index Rg

Hue Bin	R <sub>f</sub>	Graphic shifts (%)	
		Chroma	Hue
1	93	-3%	0%
2	94	-3%	2%
3	89	-1%	5%
4	91	-1%	4%
5	92	-1%	3%
6	95	2%	0%
7	95	-2%	-1%
8	95	-2%	0%
9	92	-3%	4%
10	84	-3%	10%
11	82	2%	12%
12	86	5%	7%
13	94	4%	1%
14	90	8%	-3%
15	91	3%	-5%
16	88	1%	-8%





**Beam intensities from 1-20m**

1m	2m	3m	4m	5m	6m	7m	8m	9m	10m	11m	12m	13m	14m	15m	16m	17m	18m	19m	20m
3.3ft	6.6ft	9.8ft	13.1ft	16.4ft	19.7ft	23ft	26.2ft	29.5ft	32.8ft	36.1ft	39.4ft	42.7ft	45.9ft	49.2ft	52.5ft	55.8ft	59.1ft	62.3ft	65.6ft
332lx	83lx	37lx	21lx	13lx	9lx	7lx	5lx	4lx	3lx	3lx	2lx	2lx	2lx	1lx	1lx	1lx	1lx	1lx	1lx
30.9fcd	7.7fcd	3.4fcd	1.9fcd	1.2fcd	0.9fcd	0.6fcd	0.5fcd	0.4fcd	0.3fcd	0.3fcd	0.2fcd	0.2fcd	0.2fcd	0.1fcd	0.1fcd	0.1fcd	0.1fcd	0.1fcd	0.1fcd

**Intensities in 0° c-plane**

0°	5°	10°	15°	20°	25°	30°	35°	40°	45°	50°	55°	60°	65°	70°	75°	80°	85°	90°	95°
332	333	332	326	318	308	296	281	265	246	225	204	179	153	126	97	67	39	15	2
100%	100%	100%	98%	96%	93%	89%	85%	80%	74%	68%	61%	54%	46%	38%	29%	20%	12%	5%	1%

**Intensities in 90° c-plane**

0°	5°	10°	15°	20°	25°	30°	35°	40°	45°	50°	55°	60°	65°	70°	75°	80°	85°	90°	95°
332	330	327	321	312	303	291	277	260	242	222	201	177	151	125	97	69	41	18	5
100%	99%	98%	96%	94%	91%	87%	83%	78%	73%	67%	60%	53%	46%	38%	29%	21%	12%	6%	2%

**Intensities in 180° c-plane**

0°	5°	10°	15°	20°	25°	30°	35°	40°	45°	50°	55°	60°	65°	70°	75°	80°	85°	90°	95°
332	333	330	323	315	304	292	278	261	243	224	202	178	154	128	100	71	43	19	4
100%	100%	99%	97%	95%	92%	88%	84%	78%	73%	67%	61%	54%	46%	38%	30%	21%	13%	6%	1%

**Intensities in 270° c-plane**

0°	5°	10°	15°	20°	25°	30°	35°	40°	45°	50°	55°	60°	65°	70°	75°	80°	85°	90°	95°
332	330	326	320	312	301	289	275	259	240	221	200	176	151	125	98	69	42	18	4
100%	99%	98%	96%	94%	91%	87%	83%	78%	72%	66%	60%	53%	46%	38%	29%	21%	13%	5%	1%

Beam angle 50%	Field angle 10%	Cutoff angle 2,5%	Intensity ratio in 120° cone	Intensity ratio in 90° cone
124.5°	173.1°	185.7°	72.2%	47.6%

# Photometric Details



SW-HE+24-6.0-DRY-40

**Product name:**  
SW-HE+24-6.0-DRY-40

**Date:**  
4/28/2020

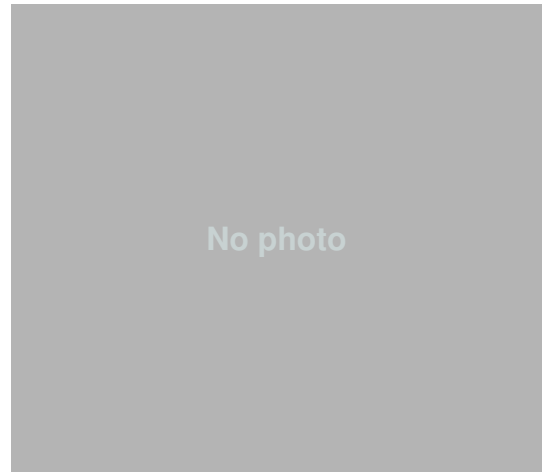
**Powering product:**  
IQ-PH-80-120/24

**Output:** 1145 lm/ft

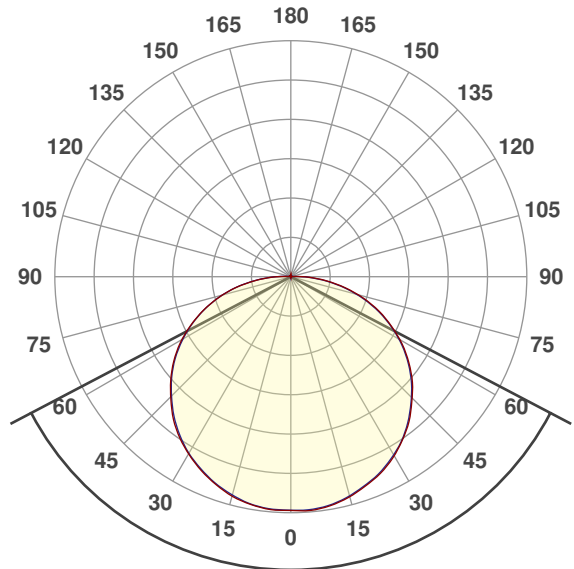
**Peak:** 342 cd

**Power:** 6.2 W/ft

**PF:** 1.0



## Beam Angle



**124.6°**

CIE 1931  
x: 0.369  
y: 0.368



## Light efficiency:



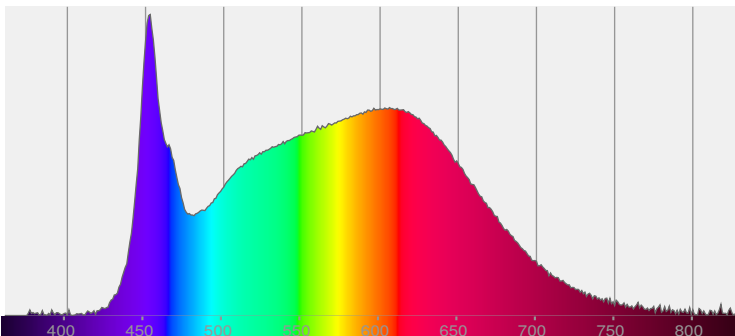
## Light quality:



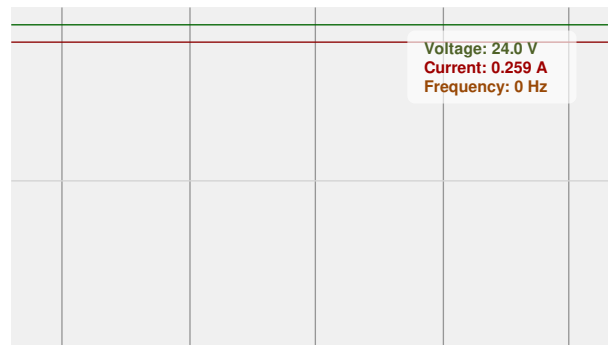
## Color temperature:



## Spectra



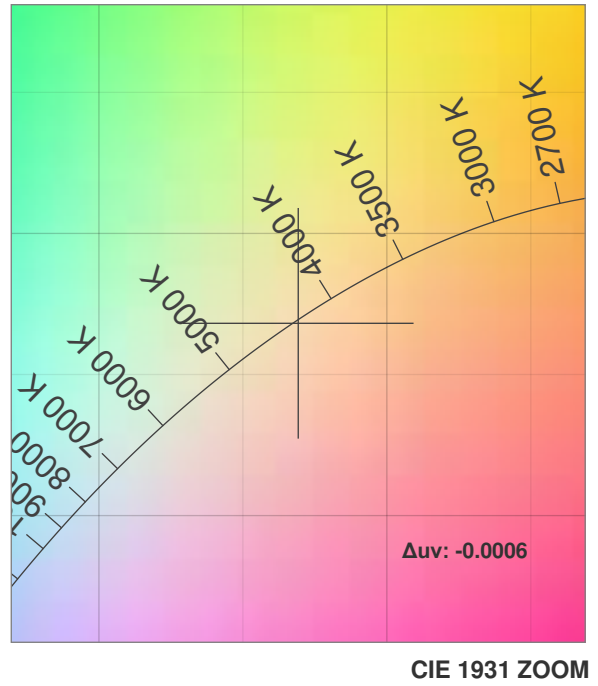
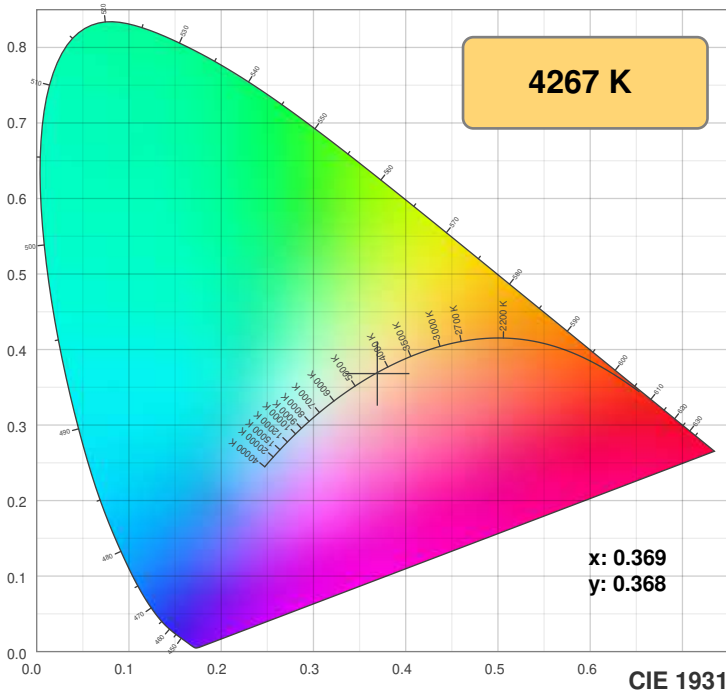
## Power



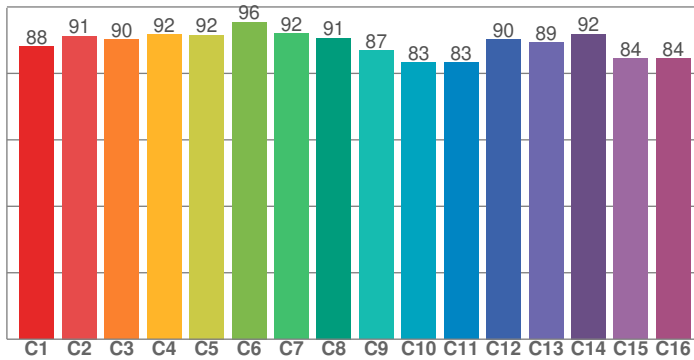
# Color Details



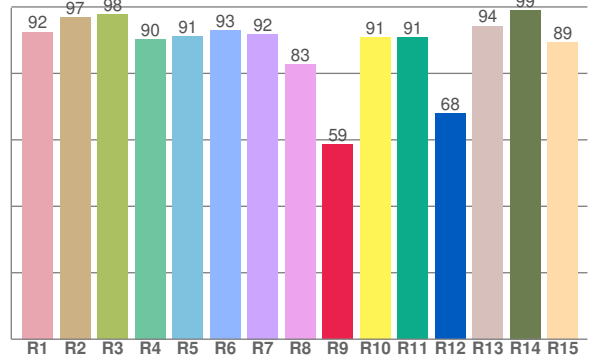
SW-HE+24-6.0-DRY-40



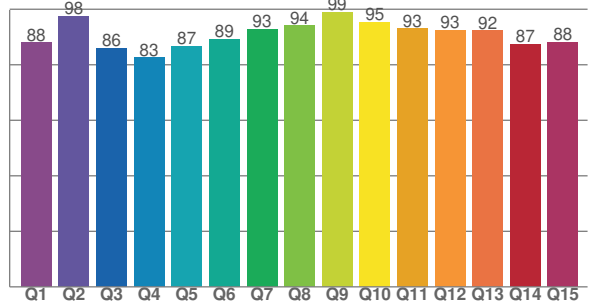
**TM30: 88.8**



**CRI: 92.0 (R1-R8)**



**CQS: 90.0**



CRI R values, only R1-R8 are used to calculate final CRI value

R1	R2	R3	R4	R5	R6	R7	R8	R9	R10	R11	R12	R13	R14	R15
92.5	96.9	97.6	90.4	91.1	92.9	91.8	82.8	58.6	91.0	90.8	68.0	94.3	99.1	89.3

TM30 C values, 16 binned values out of total of 99 C values

C1	C2	C3	C4	C5	C6	C7	C8	C9	C10	C11	C12	C13	C14	C15	C16
88.0	91.3	90.1	91.7	91.5	95.5	92.1	90.7	86.9	83.3	83.2	90.3	89.3	91.9	84.4	84.5

CQS Q values

Q1	Q2	Q3	Q4	Q5	Q6	Q7	Q8	Q9	Q10	Q11	Q12	Q13	Q14	Q15
88.0	97.6	86.1	82.6	86.7	89.3	92.8	94.2	98.9	95.3	93.0	92.5	92.3	87.4	88.1

## Color parameters

Color temperature	Color rendering index	Red component	Color fidelity	Color gamut	Color quality scale	Color coordinate cie 1931	Color coordinate cie 1931	Color coordinate	Color coordinate	Color deviation from black body
CCT	CRI	CRI R9	TM30 Rf	TM30 Rg	CQS	x	y	u	v	Δuv
4267 K	92.0	58.6	88.8	96.9	90.0	0.369	0.368	0.221	0.331	-0.0006

# TM30 Details

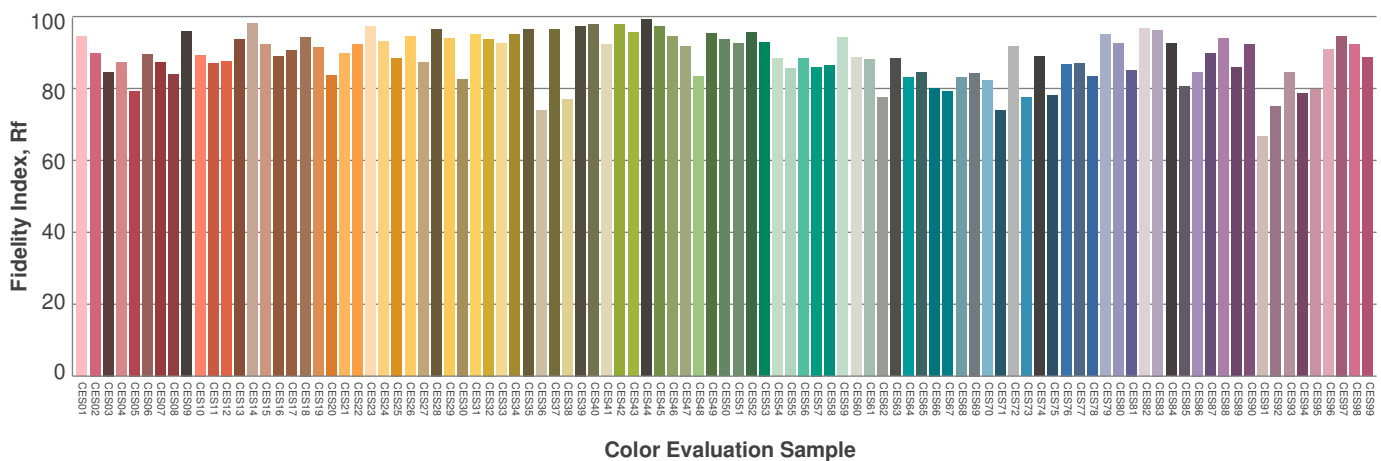
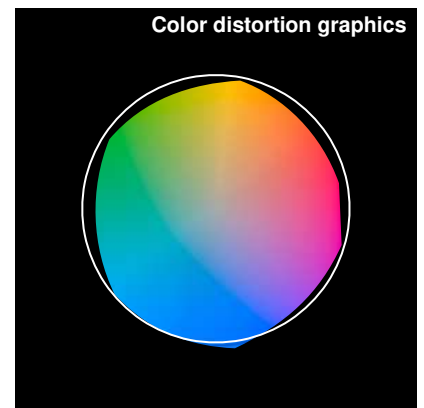
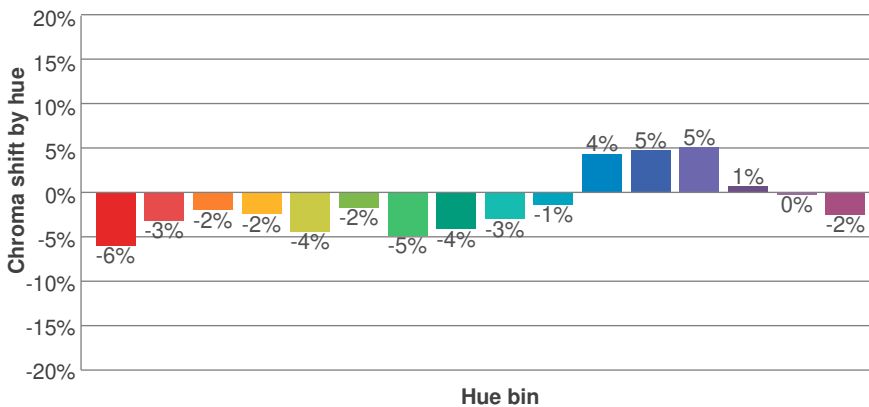
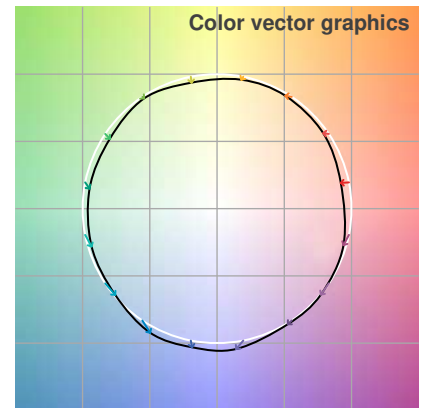
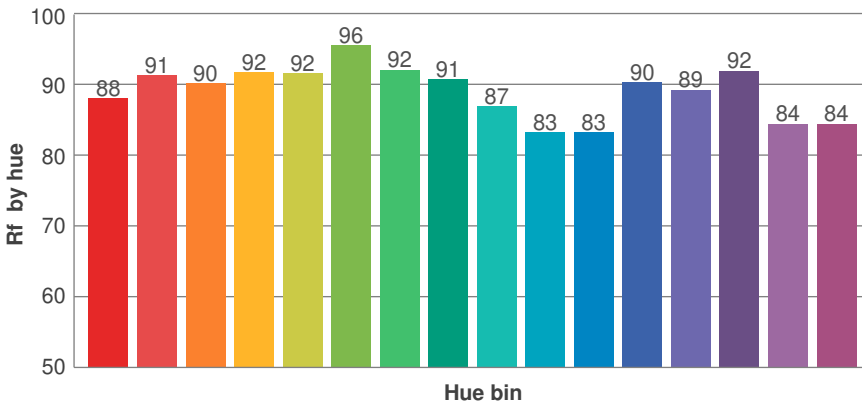
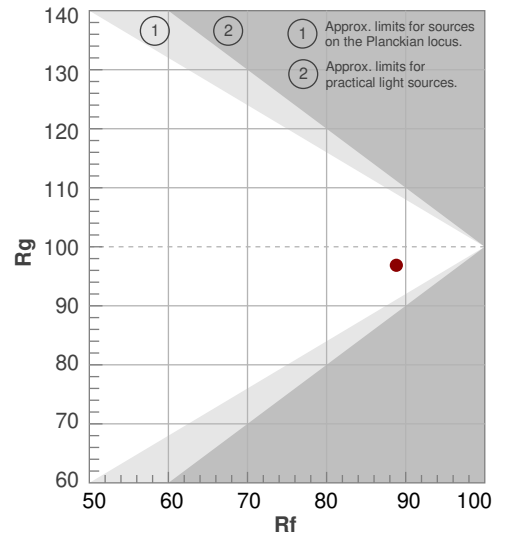


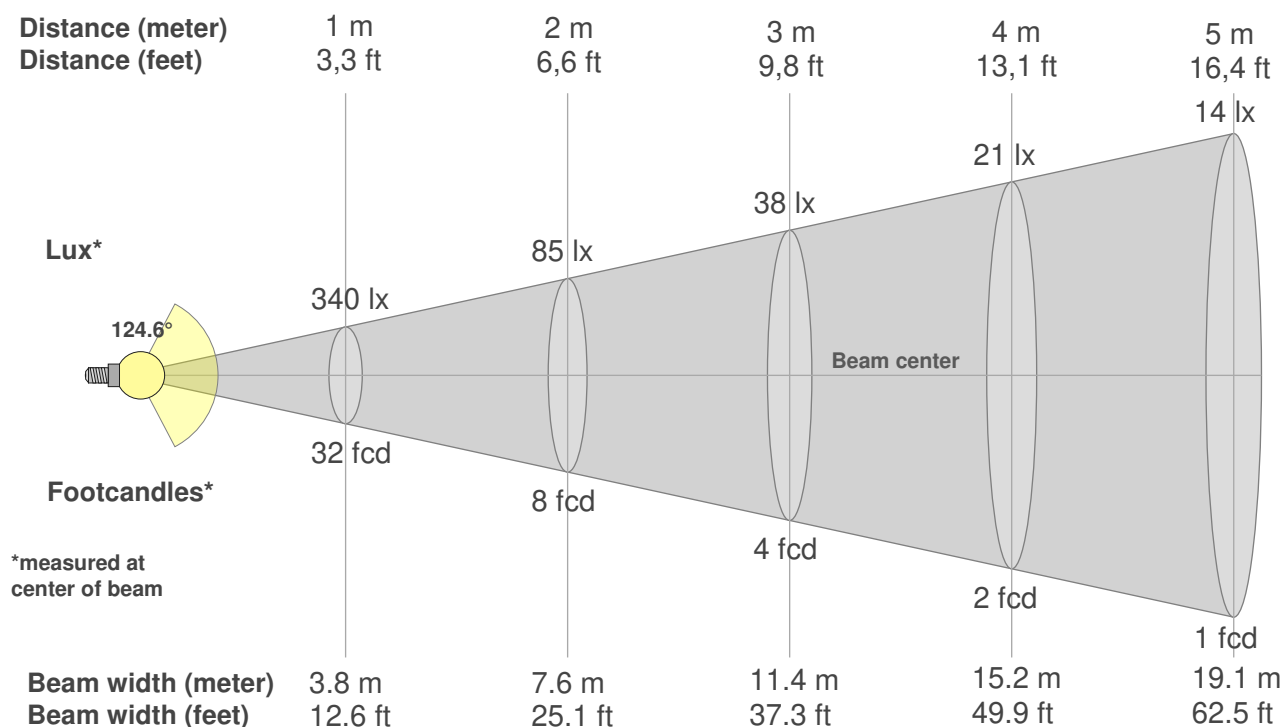
SW-HE+24-6.0-DRY-40

**Rf 88.8**  
Fidelity index Rf

**Rg 96.9**  
Gammut index Rg

Hue Bin	R <sub>f</sub>	Graphic shifts (%)	
		Chroma	Hue
1	88	-6%	1%
2	91	-3%	3%
3	90	-2%	4%
4	92	-2%	1%
5	92	-4%	0%
6	96	-2%	0%
7	92	-5%	1%
8	91	-4%	4%
9	87	-3%	9%
10	83	-1%	11%
11	83	4%	10%
12	90	5%	2%
13	89	5%	-6%
14	92	1%	-4%
15	84	0%	-10%
16	84	-2%	-8%





**Beam intensities from 1-20m**

1m	2m	3m	4m	5m	6m	7m	8m	9m	10m	11m	12m	13m	14m	15m	16m	17m	18m	19m	20m
3.3ft	6.6ft	9.8ft	13.1ft	16.4ft	19.7ft	23ft	26.2ft	29.5ft	32.8ft	36.1ft	39.4ft	42.7ft	45.9ft	49.2ft	52.5ft	55.8ft	59.1ft	62.3ft	65.6ft
340lx	85lx	38lx	21lx	14lx	9lx	7lx	5lx	4lx	3lx	3lx	2lx	2lx	2lx	2lx	1lx	1lx	1lx	1lx	1lx
31.6fcd	7.9fcd	3.5fcd	2fcd	1.3fcd	0.9fcd	0.6fcd	0.5fcd	0.4fcd	0.3fcd	0.3fcd	0.2fcd	0.2fcd	0.2fcd	0.2fcd	0.1fcd	0.1fcd	0.1fcd	0.1fcd	0.1fcd

**Intensities in 0° c-plane**

0°	5°	10°	15°	20°	25°	30°	35°	40°	45°	50°	55°	60°	65°	70°	75°	80°	85°	90°	95°
340	341	338	332	323	313	301	286	269	250	230	208	183	157	130	102	72	44	20	5
100%	100%	99%	97%	95%	92%	88%	84%	79%	73%	68%	61%	54%	46%	38%	30%	21%	13%	6%	1%

**Intensities in 90° c-plane**

0°	5°	10°	15°	20°	25°	30°	35°	40°	45°	50°	55°	60°	65°	70°	75°	80°	85°	90°	95°
340	340	337	330	322	312	299	285	267	248	228	206	182	156	128	99	70	42	18	4
100%	100%	99%	97%	95%	92%	88%	84%	79%	73%	67%	61%	53%	46%	38%	29%	21%	12%	5%	1%

**Intensities in 180° c-plane**

0°	5°	10°	15°	20°	25°	30°	35°	40°	45°	50°	55°	60°	65°	70°	75°	80°	85°	90°	95°
340	340	337	331	321	310	298	284	267	247	228	206	183	157	131	103	75	46	21	5
100%	100%	99%	97%	94%	91%	88%	83%	78%	73%	67%	61%	54%	46%	38%	30%	22%	13%	6%	1%

**Intensities in 270° c-plane**

0°	5°	10°	15°	20°	25°	30°	35°	40°	45°	50°	55°	60°	65°	70°	75°	80°	85°	90°	95°
340	339	336	329	320	309	297	282	265	246	226	205	181	156	130	103	75	46	22	6
100%	100%	99%	97%	94%	91%	87%	83%	78%	72%	67%	60%	53%	46%	38%	30%	22%	14%	6%	2%

Beam angle 50%	Field angle 10%	Cutoff angle 2,5%	Intensity ratio in 120° cone	Intensity ratio in 90° cone
124.6°	174°	185.9°	71.9%	47.4%