

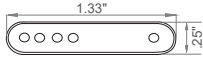
ACCESSORIES STRIP



MOUNTING

iQ-STRAP-10*	QTY
--------------	-----

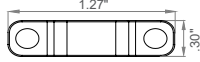
Sold: In packs of 10



Rubber Strap
Fits DRY, DMP, WET

iQ-CLIP-SS10	QTY
--------------	-----

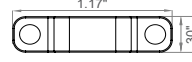
Sold: Individually



Metal Clip
Fits DMP, WET

iQ-CLIP-SS12	QTY
--------------	-----

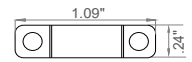
Sold: Individually



Metal Clip
Fits DMP

iQ-CLIP-PL	QTY
------------	-----

Sold: Individually

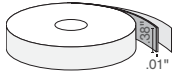


Rubber Clip
Fits DMP, WET

*1 strap included with every 1 ft. of bare LED

iQ-VHB-STD	QTY
------------	-----

Sold: In feet



Adhere LED to smooth surface
including extrusion

iQ-VHB-CON	QTY
------------	-----

Sold: In feet

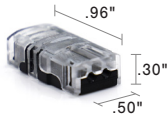


Adhere LED to concrete surface

CONNECTION

iQ-CLP-LEAD	QTY
-------------	-----

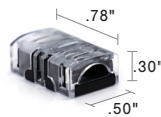
Sold: Individually



Joins lead wire to LED strip

iQ-CLP-INLINE	QTY
---------------	-----

Sold: Individually



Joins two LED strips

iQ-SNP-LEAD	QTY
-------------	-----

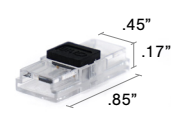
Sold: Individually



Joins lead wire to LED strip

iQ-SNP-INLINE	QTY
---------------	-----

Sold: Individually



Joins two LED strips

NOTE: CLP connectors are SW24/6.0 and SC, DRY rated only, and do not fit in extrusions.

NOTE: SNP fits all extrusions except the SLIM. Works with all DRY rated LED strips. 6.0 W/FT or less.

TWO-FER	QTY
---------	-----

Sold: Individually



Two Females and one Male

FOUR-FER	QTY
----------	-----

Sold: Individually



Four Females and one Male

MALE BENDER	QTY
-------------	-----

Sold: Individually



Connects a Male Barrel to a Male Barrel

FEMALE BENDER	QTY
---------------	-----

Sold: Individually



Connects a Female Barrel to a Female Barrel

KITS & WIRE

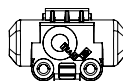
iQ-LEAD-18-KIT	Includes (1) 18" Dry lead wire, (1) 1" heat shrink tubing, (1) ½" heat shrink tubing, (1) 6" solder
iQ-JUMP-6-KIT	Includes (1) 6" Dry lead wire, (2) 1" heat shrink tubing, (2) ½" heat shrink tubing, (1) 6" solder
iQ-WSW	Dry LED lead wire available in custom lengths, 1,000' reel

iQ-LEAD-18-KIT	Sold individually	QTY
iQ-JUMP-6-KIT	Sold individually	QTY
iQ-WSW	Sold in inches	QTY

JUNCTION BOX

Q-mini-J

Junction box that allows for splicing of LED lead wires
(Full ordering guide available for this product)



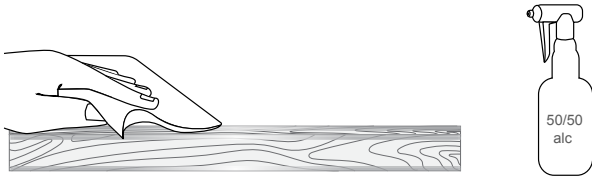
Q-mini-J	Sold individually	QTY
----------	-------------------	-----

PROJECT NAME	DATE	COMPANY	TYPE	NOTE

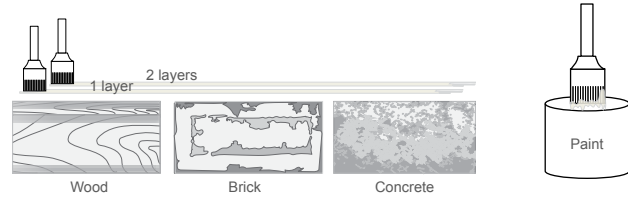
INSTALLATION STRIP



SURFACE PREPARATION



Thoroughly clean the area where the tape lights will be installed. Using a 50/50 alcohol mix, clean the area where LEDs will be applied and allow time for alcohol to dry, roughly 5 minutes.



For porous materials (wood, brick, concrete) apply two layers of paint or primer to the surface. This will help create a better bonding surface for these materials. This can be purchased from your local hardware store.

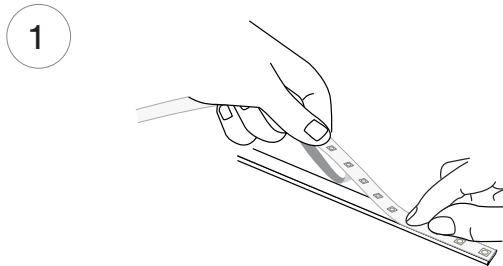


Apply 3M Primer 94 to surface where LED tape lights will be installed to increase bonding power. A second coat can be applied once first coat has dried. For best results with a porous material, apply the paint as described in step 3 and two layers of Primer 94.

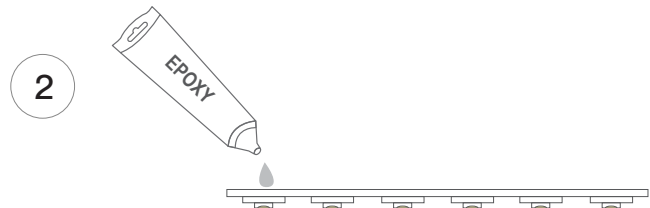
Temperature and Environmental concerns:

- Ideal application environment is 70-100° in 50% humidity
- Absolute minimum temperature: 50°F
- This temperature and humidity should be maintained for 72 hours after application for maximum holding force.

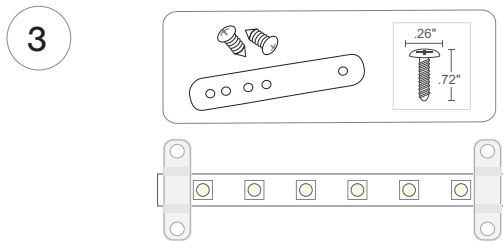
STRIP SURFACE INSTALLATION



Remove the backing from the adhesive and apply firm pressure to the bonding surface.

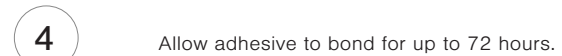


For Improved bonding performance, apply small amounts of epoxy at each end to increase holding force.



Install clips if they are being used. Install a strap every 12" to secure.

Materials	Suggested Epoxies
Concrete, Stone, Cinderblock, Metal & Brick	Loctite Metal and Concrete Two-Part Epoxy
ABS, Fiberglass, Plastic, and PVC	Loctite Plastic Two-Part Epoxy
Tile, Wood, Ceramic, Glass, or Metal	Loctite Clear Two-Part Epoxy
All Purpose	Strong Stik



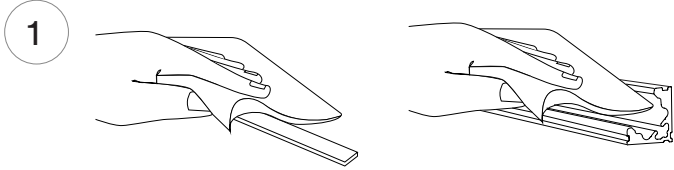
Allow adhesive to bond for up to 72 hours.

NOTES: • Field modifications must comply with Q-Tran's installation methods otherwise warranty is null and void

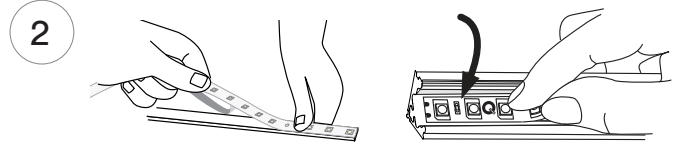
INSTALLATION STRIP



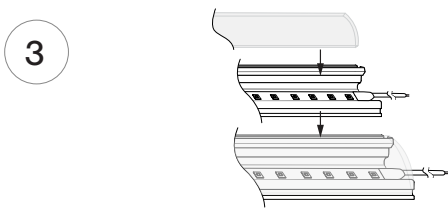
STRIP/EXTRUSION ASSEMBLY



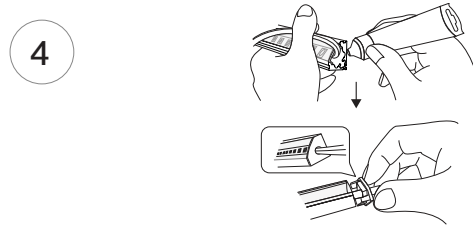
Using a 50/50 alcohol mix, thoroughly clean the surface of the extrusion and the multi-tray surface, allow time to dry (about 5 minutes).



Gently place LED in Extrusion/Tray. Apply firm pressure to the bonding surface. Do not remove more of the backing than is needed.

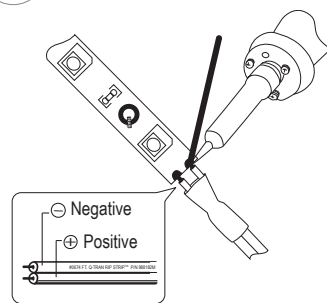
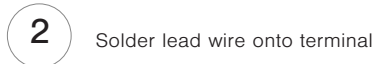
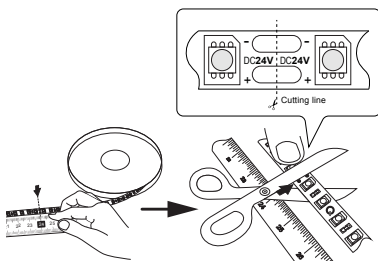
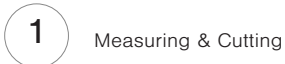


Start applying uniform pressure until the two panels (extrusion & lens) snap securely together.



Add glue inside the cap and glue around to secure End Cap in place.

LEAD WIRE & JUMPER



Materials - Lead Wire

- (1) 18" Lead Wire
- (1) 6" Solder
- (1) 1" Shrink Tube
- (1) 1/2" Shrink Tube

Materials - Jumper

- (1) 6" Lead Wire
- (1) 6" Solder
- (2) 1" Shrink Tube
- (2) 1/2" Shrink Tube



a. Place 1st sleeve (1/2" Shrink Tube) on lead wire.

b. Shrink the tube with heat gun.

c. Place 2nd (1" Shrink Tube) sleeve over 1st sleeve.

d. Shrink the tube with heat gun.

NOTES: • Field modifications must comply with Q-Tran's installation methods otherwise warranty is null and void