

Photometric Details



SW24-5.0_DRY_20

Product name: SW24-5.0_DRY_20	
Date: 3/20/2018	
Powering product: IQ-PH-80-120/24	
<hr/>	
Output:	342 lm/ft
Peak:	105 cd
Power:	4.8 W/ft
PF:	1.0



Light efficiency:



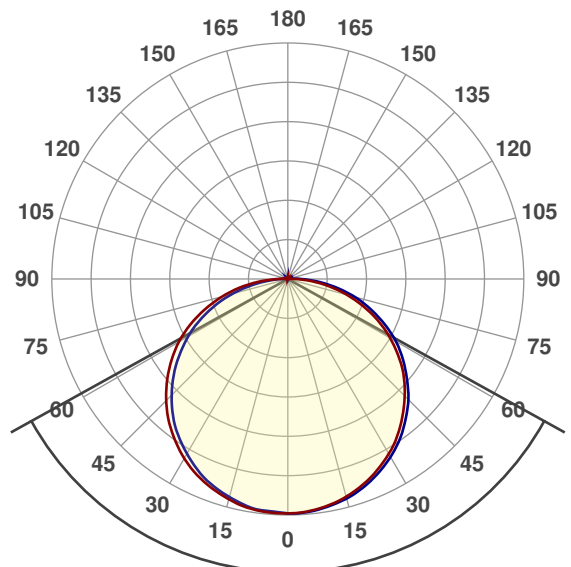
Light quality:



Color temperature:



Beam Angle

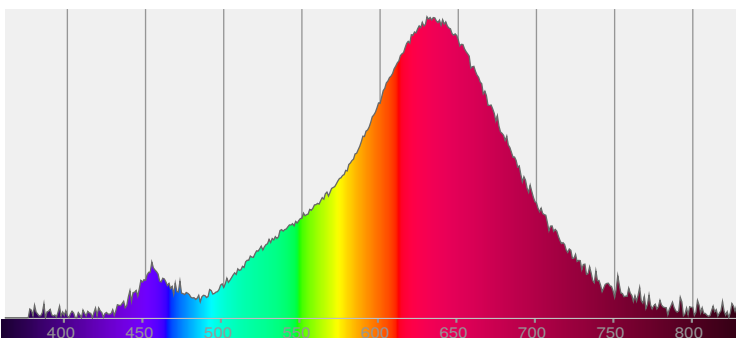


122°

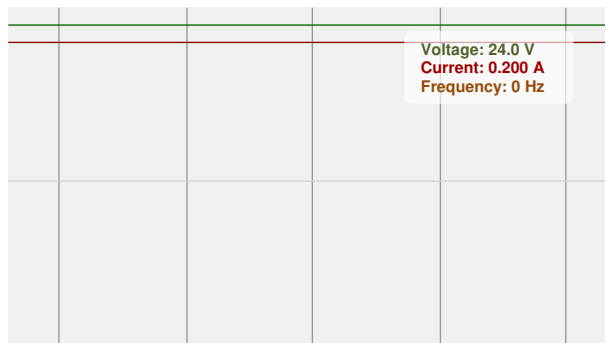


CIE 1931
x: 0.518
y: 0.401

Spectra

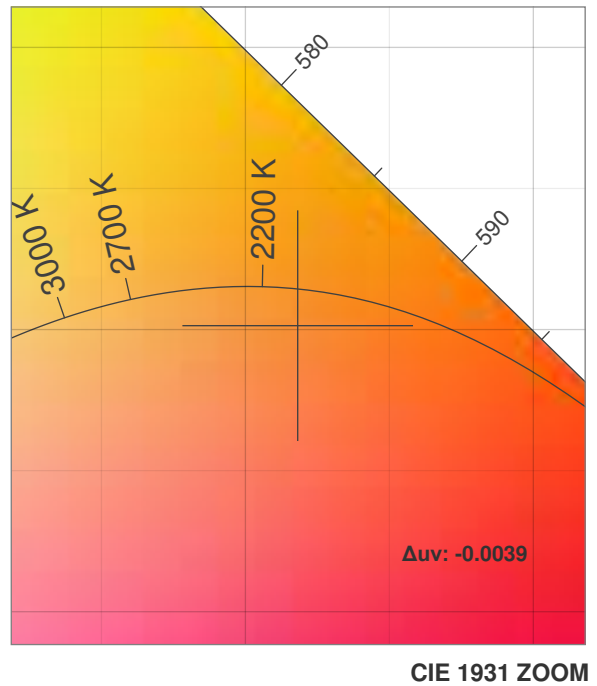
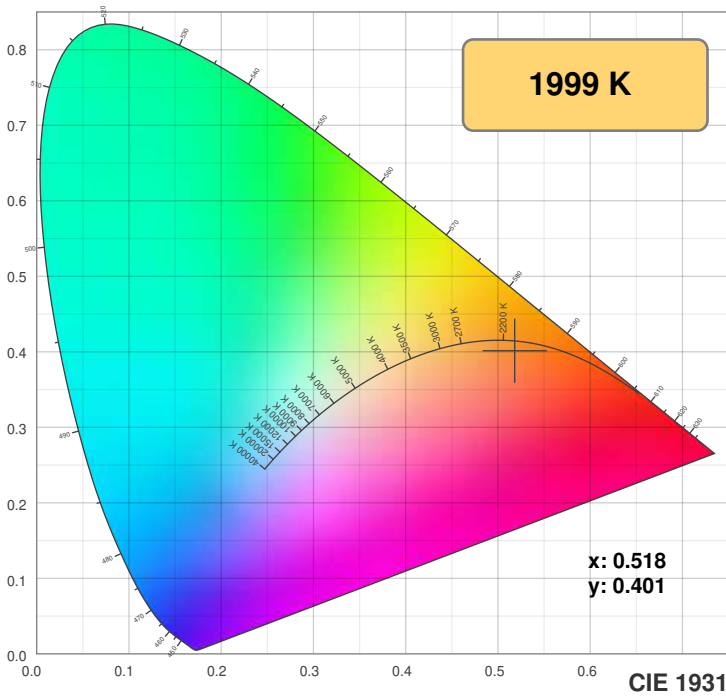


Power

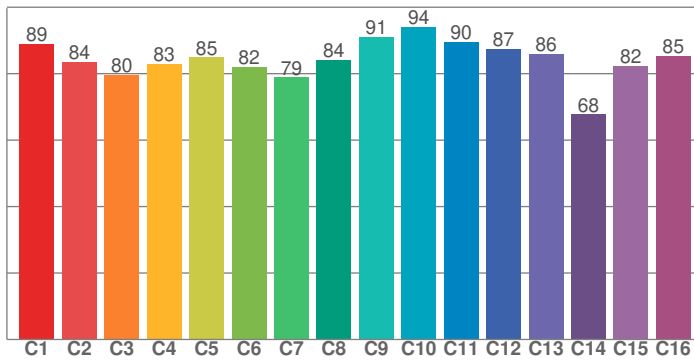


Color Details

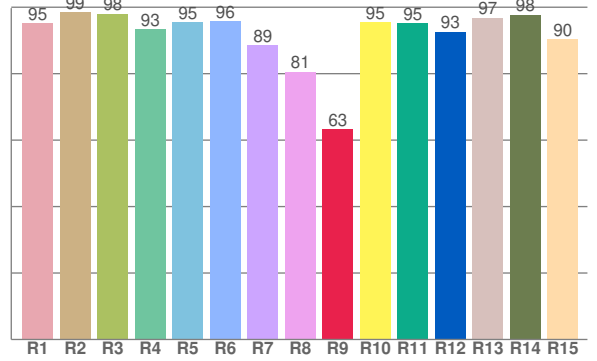
SW24-5.0_DRY_20



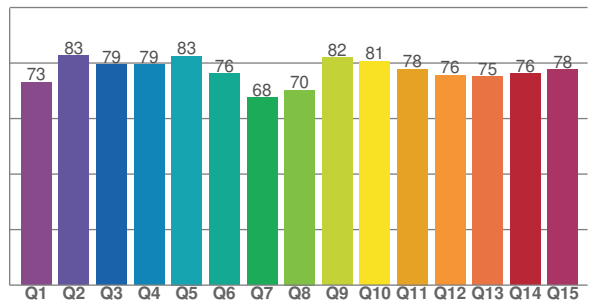
TM30: 85.6



CRI: 93.2 (R1-R8)



CQS: 76.2



CRI R values, only R1-R8 are used to calculate final CRI value

R1	R2	R3	R4	R5	R6	R7	R8	R9	R10	R11	R12	R13	R14	R15
95.2	98.6	98.1	93.5	95.4	95.9	88.6	80.5	63.3	95.4	95.2	92.7	96.8	97.7	90.4

TM30 C values, 16 binned values out of total of 99 C values

C1	C2	C3	C4	C5	C6	C7	C8	C9	C10	C11	C12	C13	C14	C15	C16
89.0	83.6	79.6	82.9	84.9	82.0	78.9	84.2	91.1	94.1	89.7	87.4	86.0	67.7	82.4	85.4

CQS Q values

Q1	Q2	Q3	Q4	Q5	Q6	Q7	Q8	Q9	Q10	Q11	Q12	Q13	Q14	Q15
73.0	82.7	79.3	79.5	82.6	76.2	67.6	70.3	82.0	80.6	77.9	75.6	75.2	76.1	77.7

Color parameters

Color temperature	Color rendering index	Red component	Color fidelity	Color gamut	Color quality scale	Color coordinate cie 1931	Color coordinate cie 1931	Color coordinate	Color coordinate	Color diviation from black body
CCT	CRI	CRI R9	TM30 Rf	TM30 Rg	CQS	x	y	u	v	Δuv
1999 K	93.2	63.3	85.6	106.6	76.2	0.518	0.401	0.306	0.355	-0.0039

TM30 Details

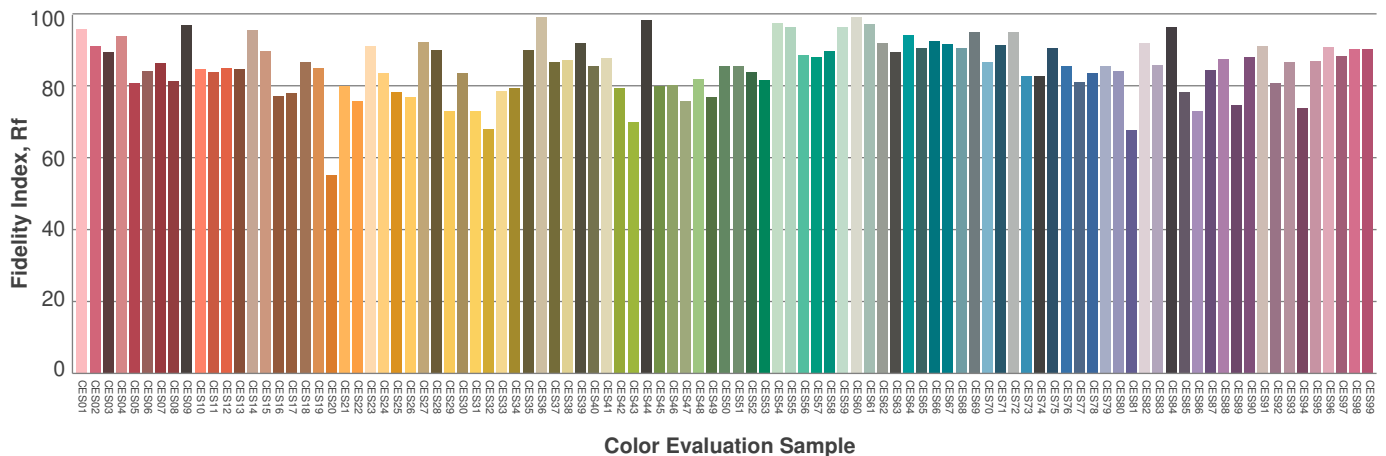
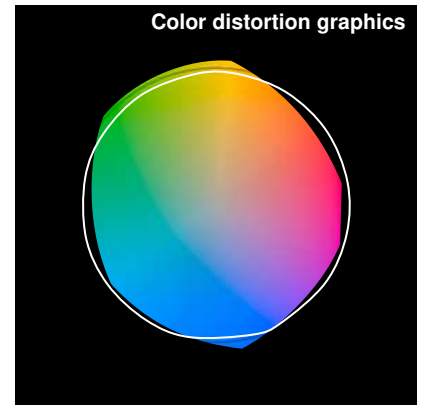
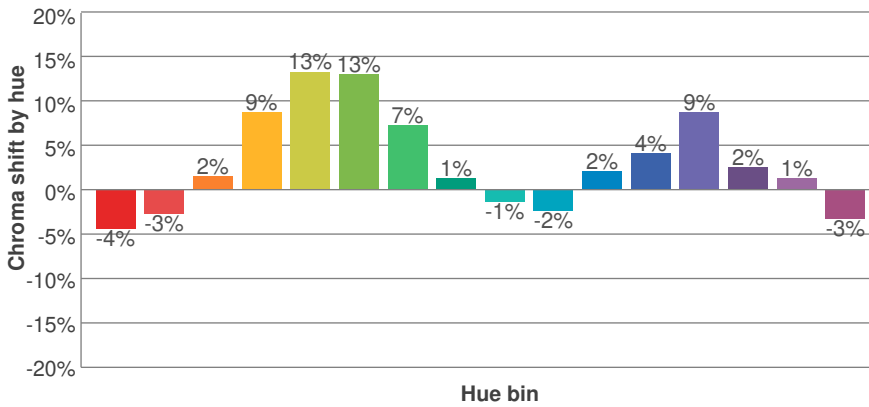
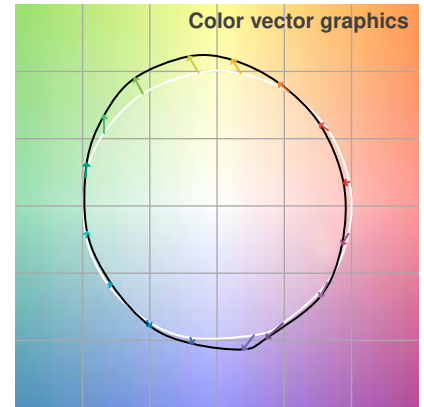
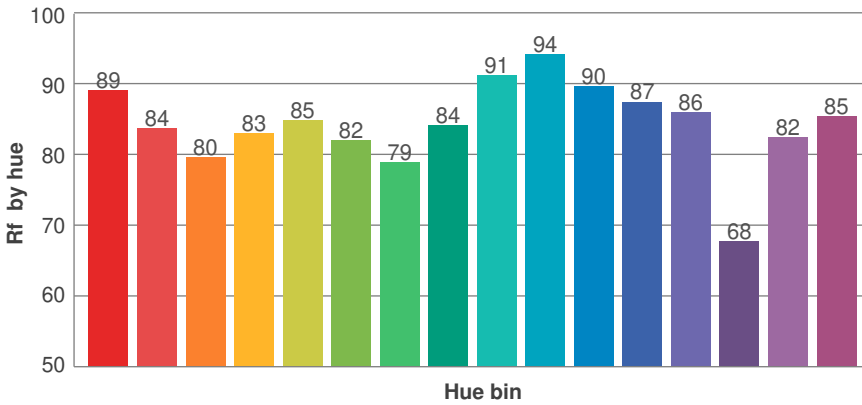
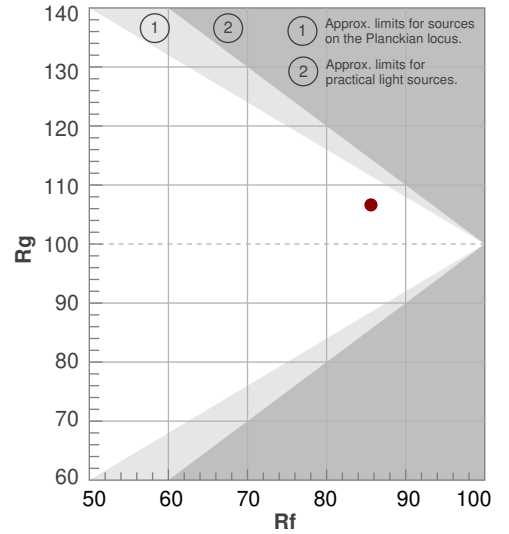
SW24-5.0_DRY_20



Rf 85.6
Fidelity index Rf

Rg 106.6
Gammut index Rg

Hue Bin	R _f	Graphic shifts (%)	
		Chroma	Hue
1	89	-4%	0%
2	84	-3%	8%
3	80	2%	10%
4	83	9%	8%
5	85	13%	5%
6	82	13%	-1%
7	79	7%	-11%
8	84	1%	-11%
9	91	-1%	-4%
10	94	-2%	2%
11	90	2%	5%
12	87	4%	2%
13	86	9%	-10%
14	68	2%	-16%
15	82	1%	-12%
16	85	-3%	-9%

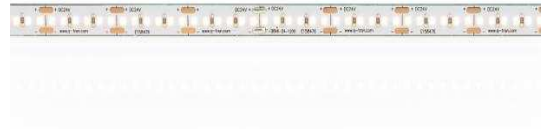


Photometric Details



SW24-5.0_DRY_24

Product name: SW24-5.0_DRY_24	
Date: 5/25/2018	
Powering product: IQ-PH-80-120/24	
<hr/>	
Output:	374 lm/ft
Peak:	114 cd
Power:	4.8 W/ft
PF:	1.0



Light efficiency:



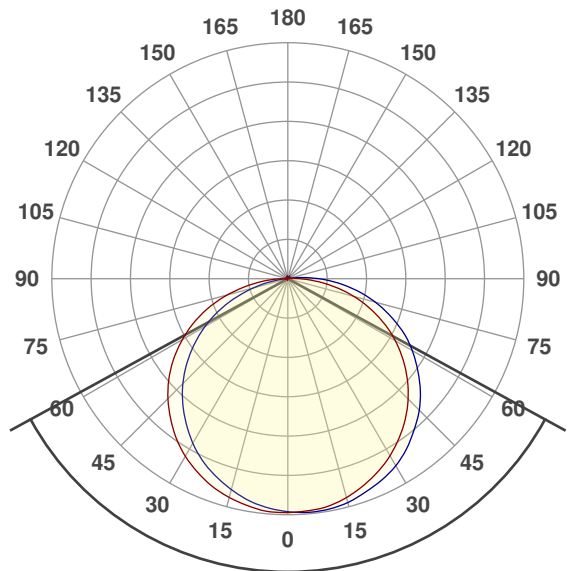
Light quality:



Color temperature:



Beam Angle

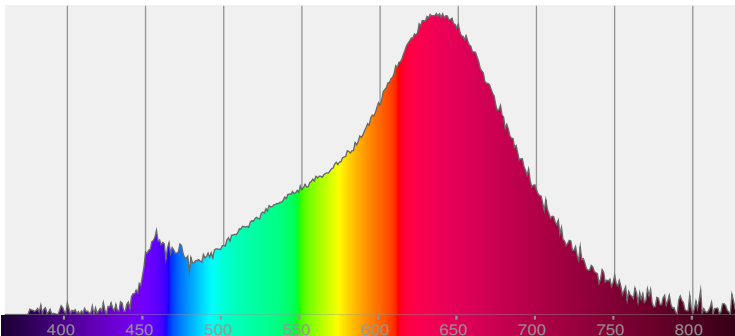


122.7°

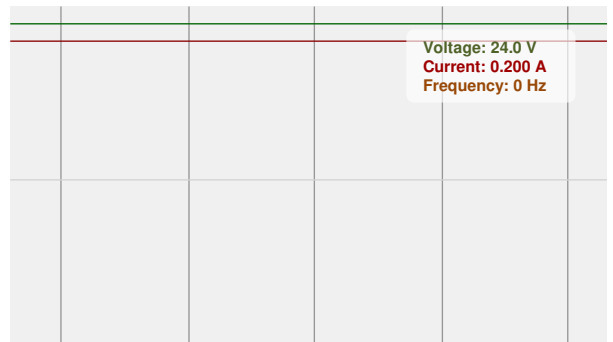


CIE 1931
x: 0.480
y: 0.405

Spectra

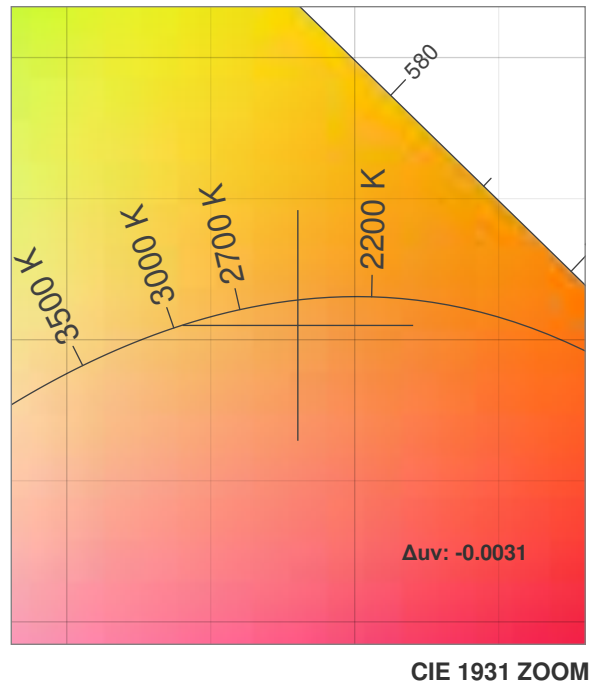
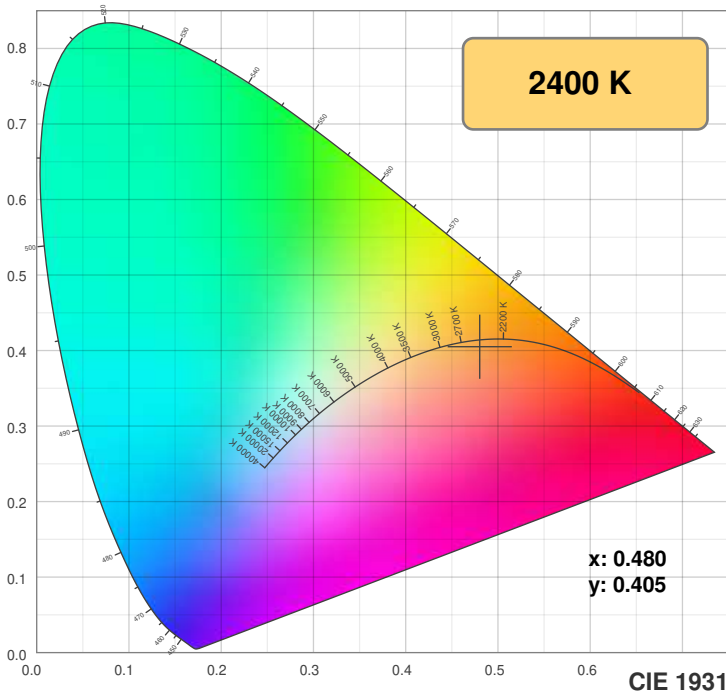


Power

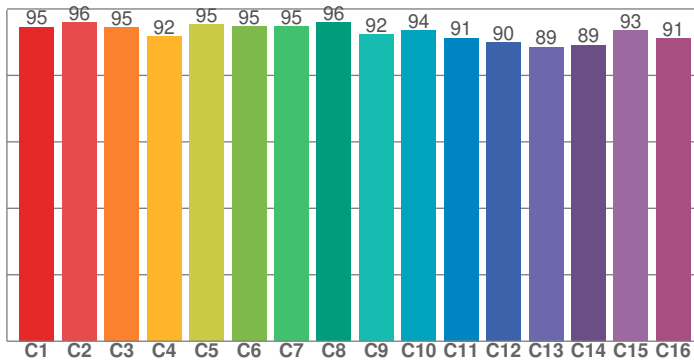


Color Details

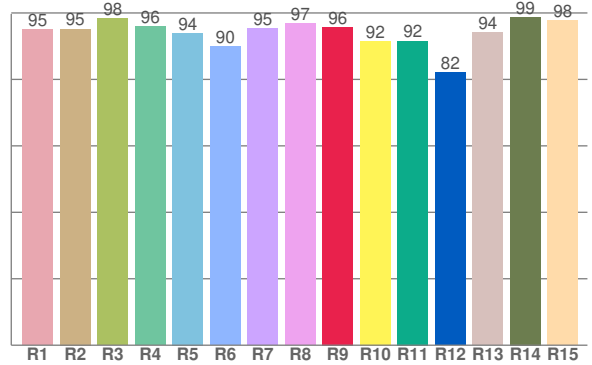
SW24-5.0_DRY_24



TM30: 93.1



CRI: 95.1 (R1-R8)



CRI R values, only R1-R8 are used to calculate final CRI value

R1	R2	R3	R4	R5	R6	R7	R8	R9	R10	R11	R12	R13	R14	R15
95.0	95.2	98.4	96.0	94.0	90.0	95.3	96.9	95.7	91.6	91.6	82.1	94.2	98.8	97.7

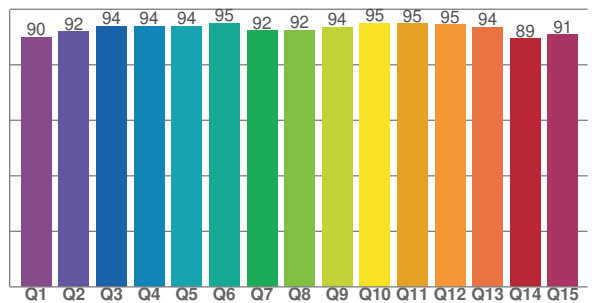
TM30 C values, 16 binned values out of total of 99 C values

C1	C2	C3	C4	C5	C6	C7	C8	C9	C10	C11	C12	C13	C14	C15	C16
94.6	95.9	94.5	91.7	95.3	94.7	94.7	95.9	92.3	93.5	91.3	90.0	88.6	89.1	93.5	91.1

CQS Q values

Q1	Q2	Q3	Q4	Q5	Q6	Q7	Q8	Q9	Q10	Q11	Q12	Q13	Q14	Q15
90.0	92.0	94.0	93.8	93.9	95.0	92.4	92.4	93.6	94.9	94.9	94.5	93.6	89.4	90.8

CQS: 92.4



Color parameters

Color temperature	Color rendering index	Red component	Color fidelity	Color gamut	Color quality scale	Color coordinate cie 1931	Color coordinate cie 1931	Color coordinate	Color coordinate	Color deviation from black body
CCT	CRI	CRI R9	TM30 Rf	TM30 Rg	CQS	x	y	u	v	Δuv
2400 K	95.1	95.7	93.1	101.5	92.4	0.480	0.405	0.278	0.352	-0.0031

TM30 Details

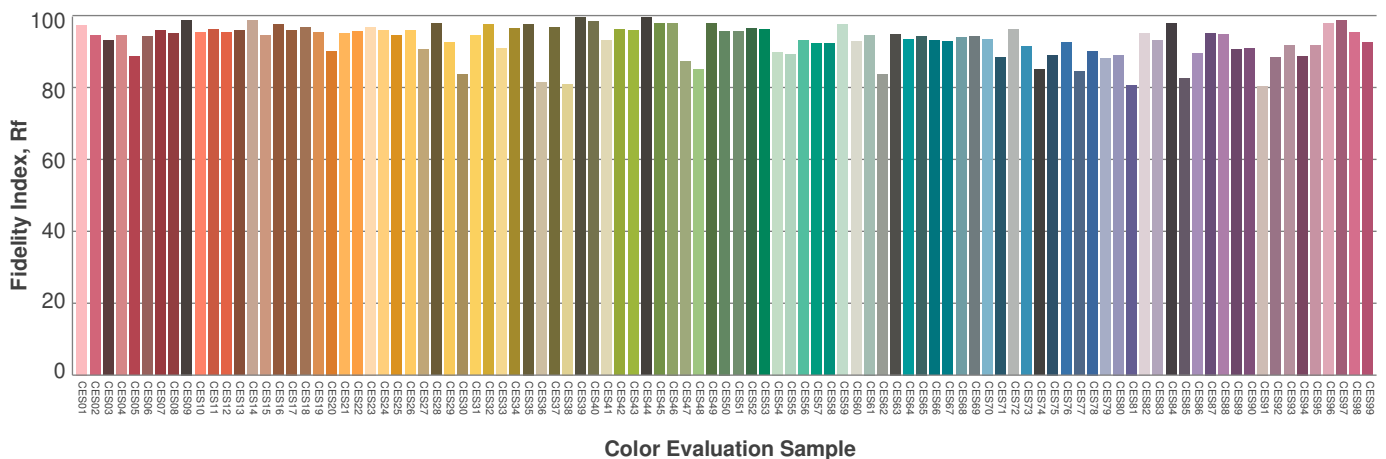
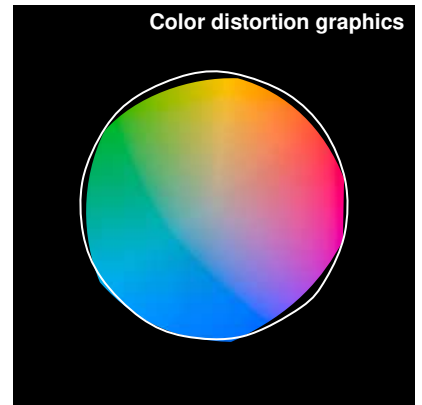
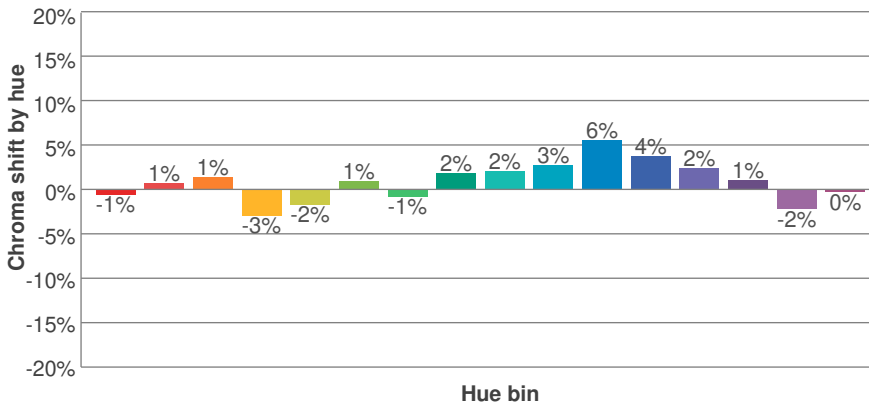
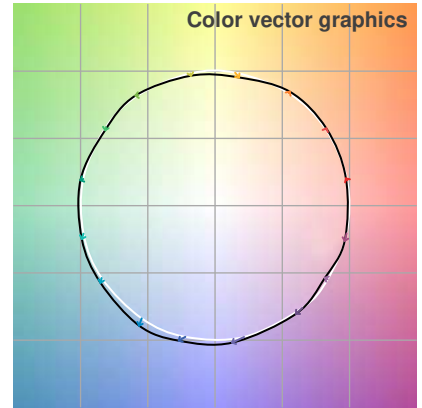
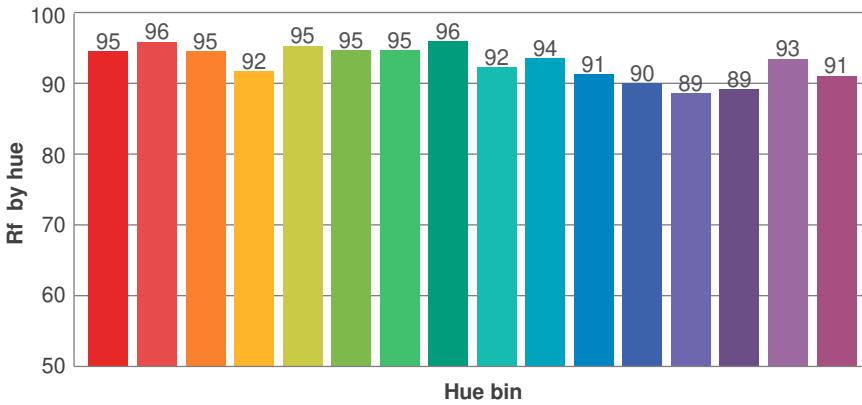
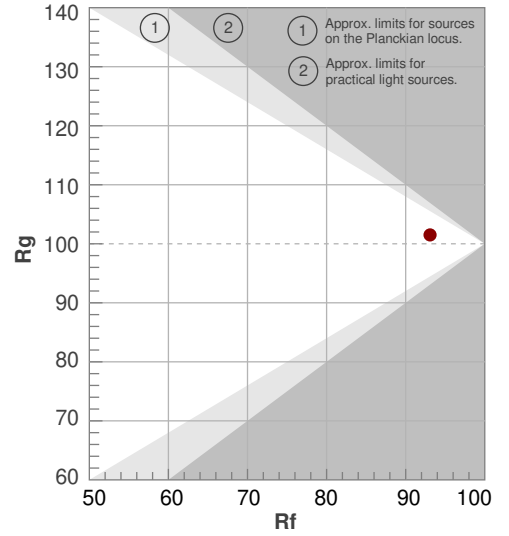
SW24-5.0_DRY_24



Rf 93.1
Fidelity index Rf

Rg 101.5
Gammut index Rg

Hue Bin	R _i	Graphic shifts (%)	
		Chroma	Hue
1	95	-1%	2%
2	96	1%	0%
3	95	1%	0%
4	92	-3%	-4%
5	95	-2%	0%
6	95	1%	2%
7	95	-1%	2%
8	96	2%	1%
9	92	2%	4%
10	94	3%	2%
11	91	6%	1%
12	90	4%	-4%
13	89	2%	-9%
14	89	1%	-6%
15	93	-2%	0%
16	91	0%	-6%

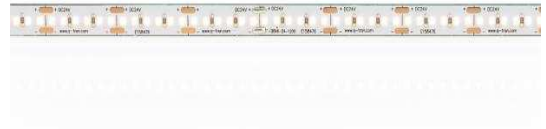


Photometric Details

SW24-5.0_DRY_27



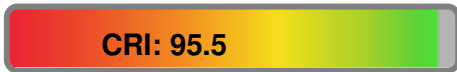
Product name: SW24-5.0_DRY_27	
Date: 2/22/2018	
Powering product: IQ-PH-80-120/24	
<hr/>	
Output:	379 lm/ft
Peak:	116 cd
Power:	4.8 W/ft
PF:	1.0



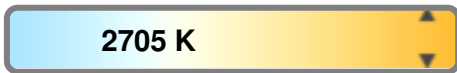
Light efficiency:



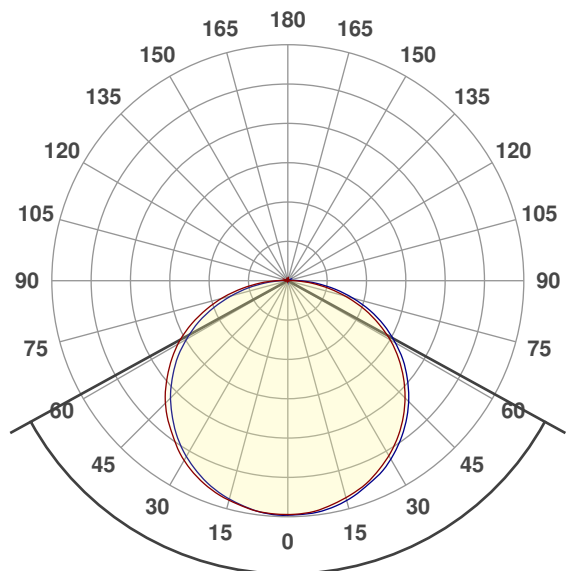
Light quality:



Color temperature:



Beam Angle

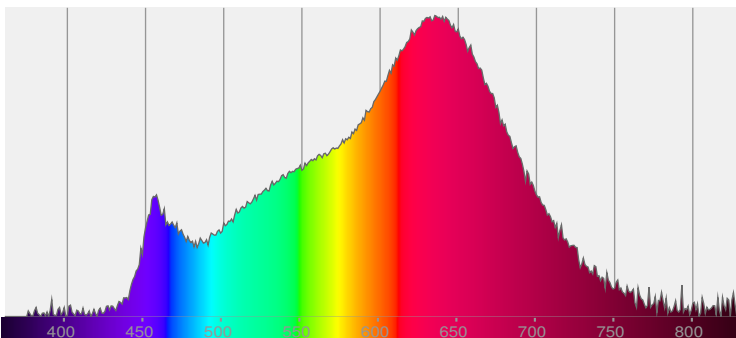


122.5°

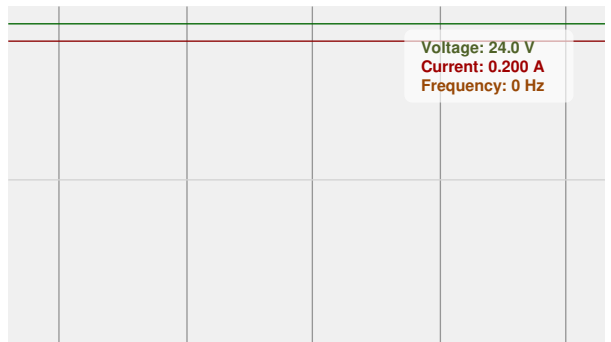


CIE 1931
x: 0.453
y: 0.398

Spectra



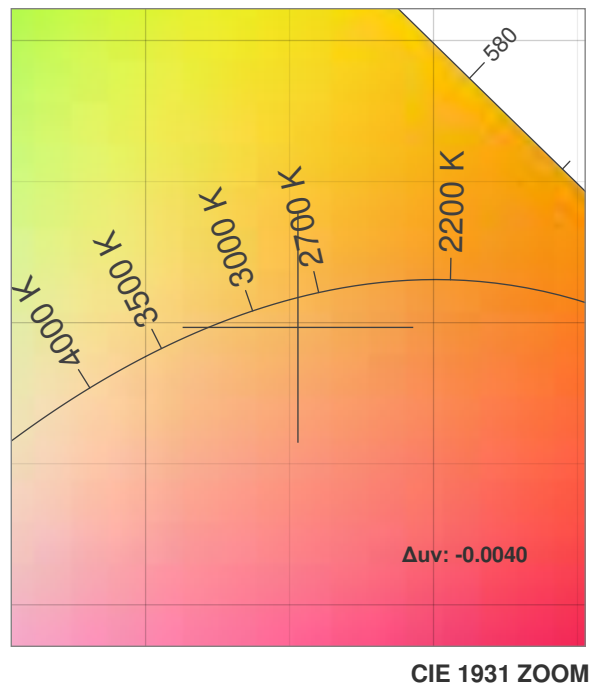
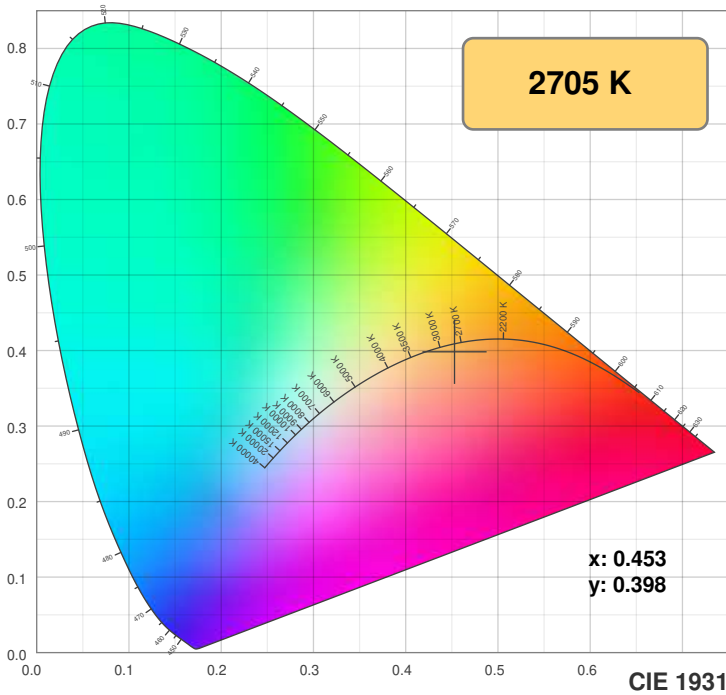
Power



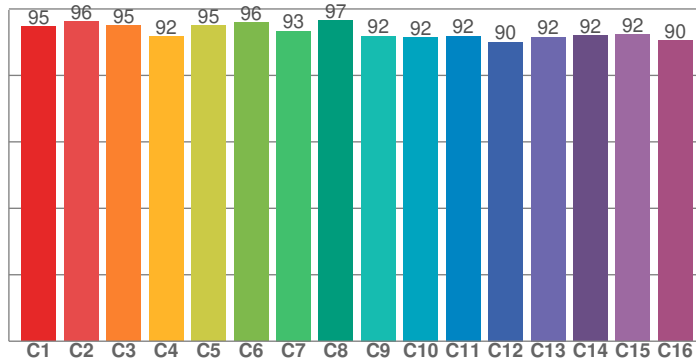
Voltage: 24.0 V
Current: 0.200 A
Frequency: 0 Hz

Color Details

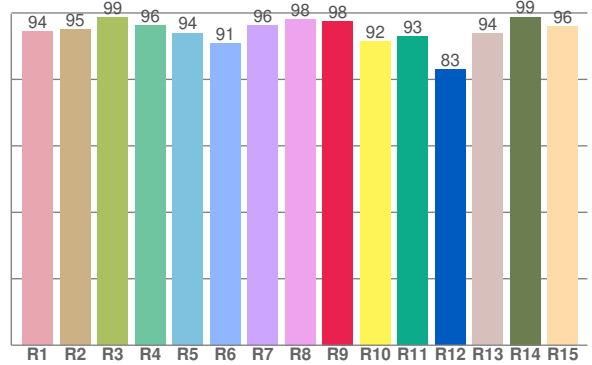
SW24-5.0_DRY_27



TM30: 93.1



CRI: 95.5 (R1-R8)



CRI R values, only R1-R8 are used to calculate final CRI value

R1	R2	R3	R4	R5	R6	R7	R8	R9	R10	R11	R12	R13	R14	R15
94.5	95.1	98.6	96.3	94.0	90.9	96.1	98.2	97.6	91.5	92.9	83.0	93.8	98.8	95.8

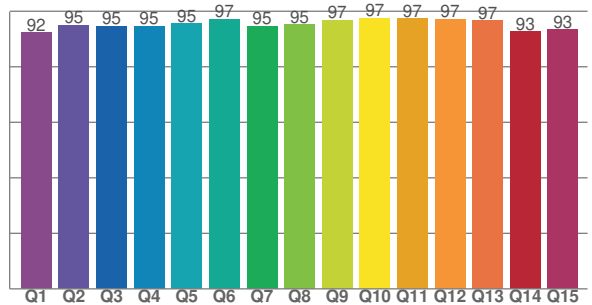
TM30 C values, 16 binned values out of total of 99 C values

C1	C2	C3	C4	C5	C6	C7	C8	C9	C10	C11	C12	C13	C14	C15	C16
94.7	96.3	95.0	91.8	95.0	95.9	93.4	96.5	91.8	91.5	91.8	90.1	91.5	92.0	92.3	90.4

CQS Q values

Q1	Q2	Q3	Q4	Q5	Q6	Q7	Q8	Q9	Q10	Q11	Q12	Q13	Q14	Q15
92.3	95.0	94.7	94.6	95.5	97.1	94.7	95.2	96.8	97.5	97.3	97.2	96.6	92.7	93.3

CQS: 94.8



Color parameters

Color temperature	Color rendering index	Red component	Color fidelity	Color gamut	Color quality scale	Color coordinate cie 1931	Color coordinate cie 1931	Color coordinate	Color coordinate	Color deviation from black body
CCT	CRI	CRI R9	TM30 Rf	TM30 Rg	CQS	x	y	u	v	Δuv
2705 K	95.5	97.6	93.1	101.3	94.8	0.453	0.398	0.264	0.348	-0.0040

TM30 Details

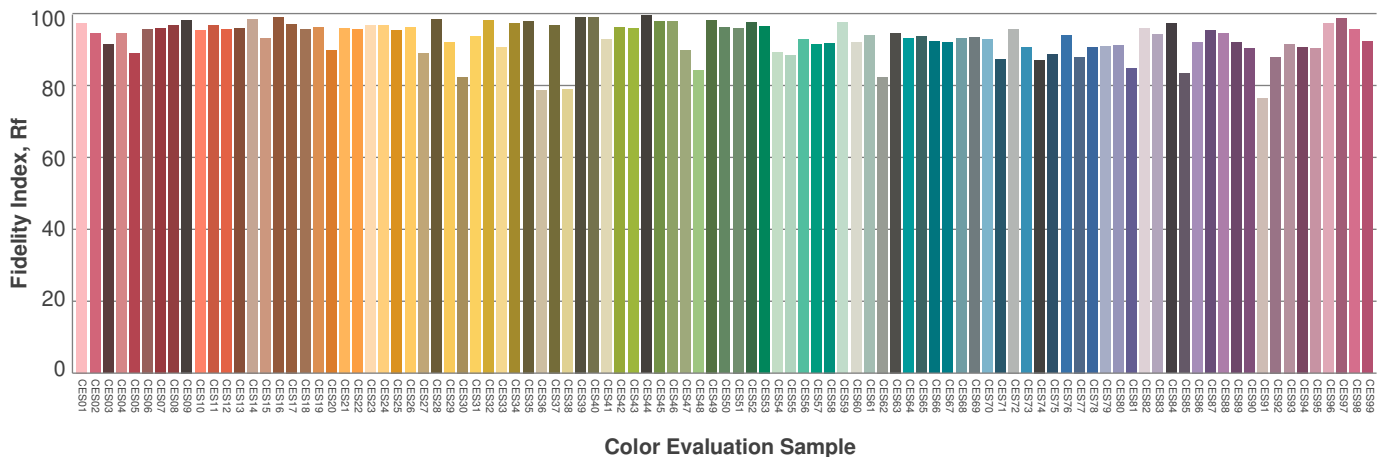
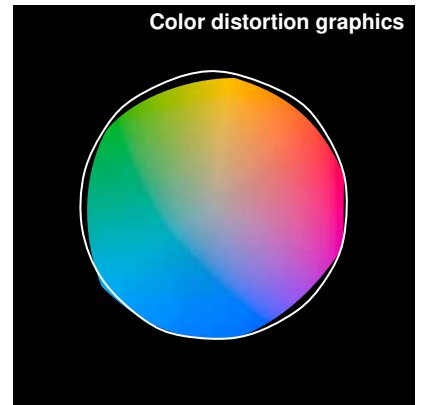
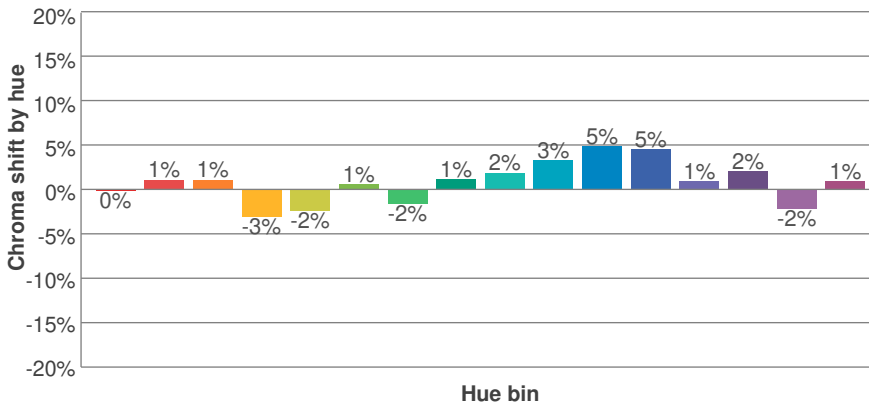
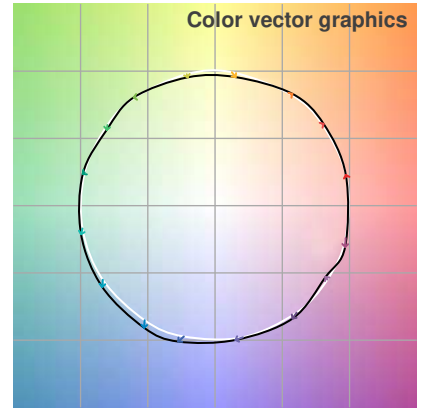
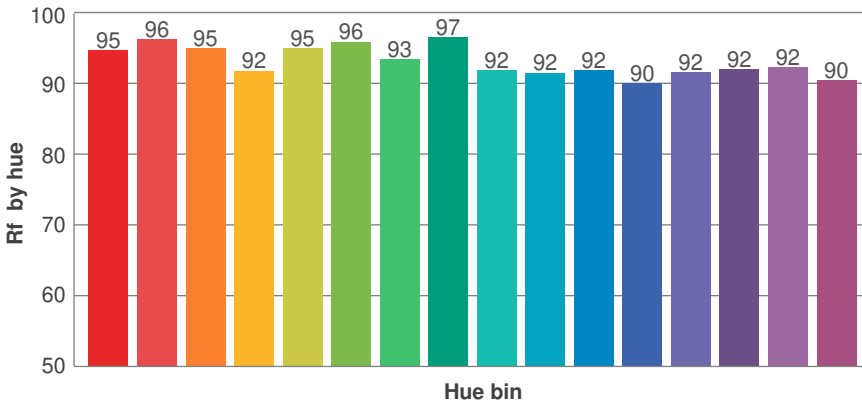
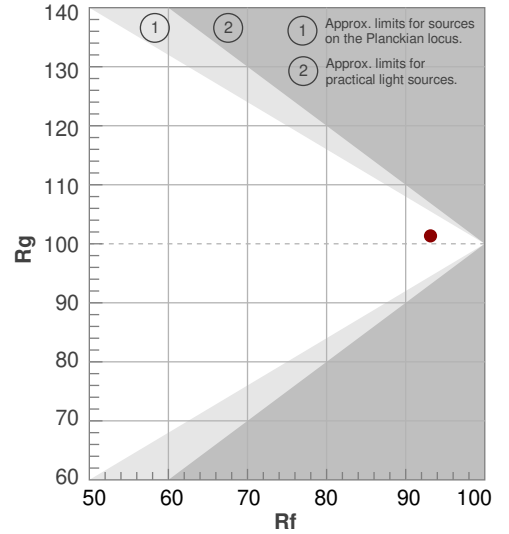
SW24-5.0_DRY_27



Rf 93.1
Fidelity index Rf

Rg 101.3
Gammut index Rg

Hue Bin	R _f	Graphic shifts (%)	
		Chroma	Hue
1	95	0%	2%
2	96	1%	0%
3	95	1%	0%
4	92	-3%	-3%
5	95	-2%	0%
6	96	1%	1%
7	93	-2%	3%
8	97	1%	1%
9	92	2%	4%
10	92	3%	4%
11	92	5%	3%
12	90	5%	-3%
13	92	1%	-6%
14	92	2%	-5%
15	92	-2%	1%
16	90	1%	-7%



Photometric Details

SW24-5.0_DRY_30



Product name: SW24-5.0_DRY_30	
Date: 2/22/2018	
Powering product: IQ-PH-80-120/24	
<hr/>	
Output:	398 lm/ft
Peak:	122 cd
Power:	4.8 W/ft
PF:	1.0



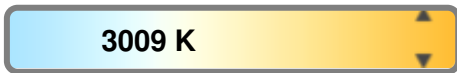
Light efficiency:



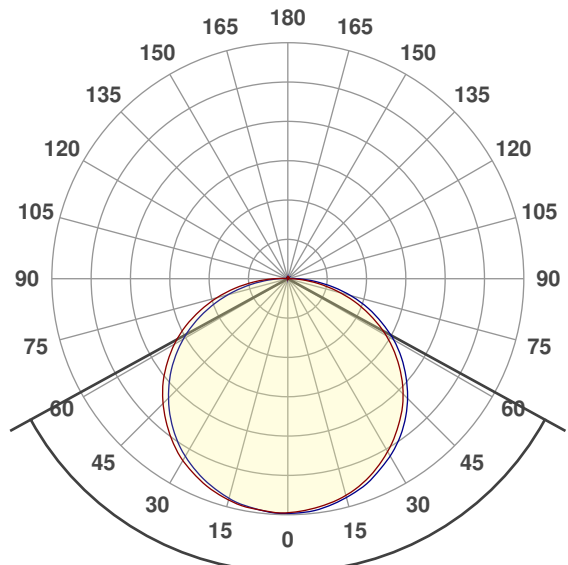
Light quality:



Color temperature:



Beam Angle

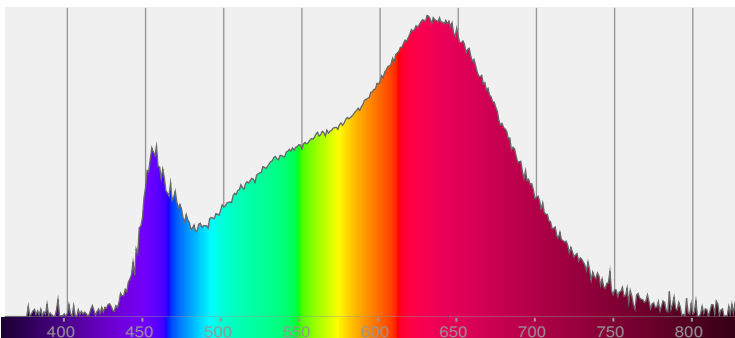


122.5°

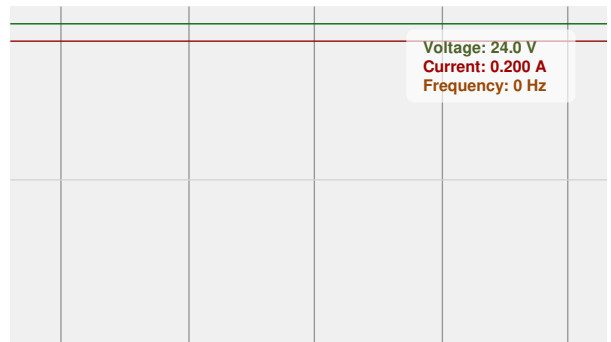


CIE 1931
x: 0.431
y: 0.392

Spectra



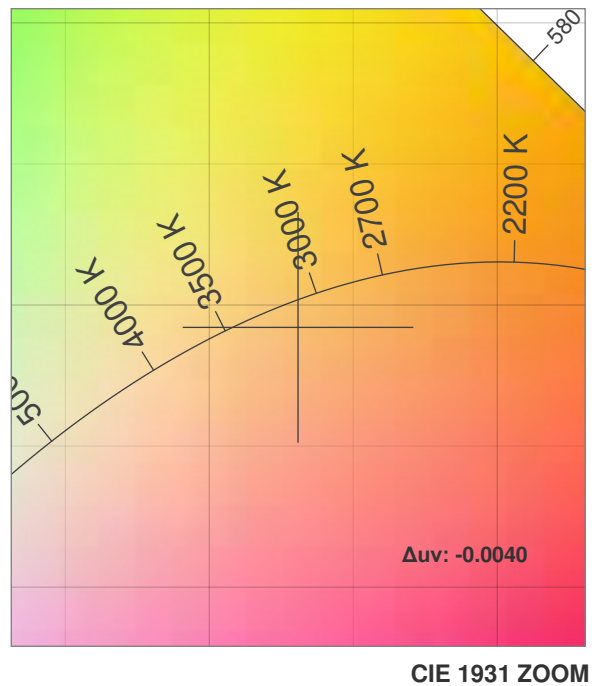
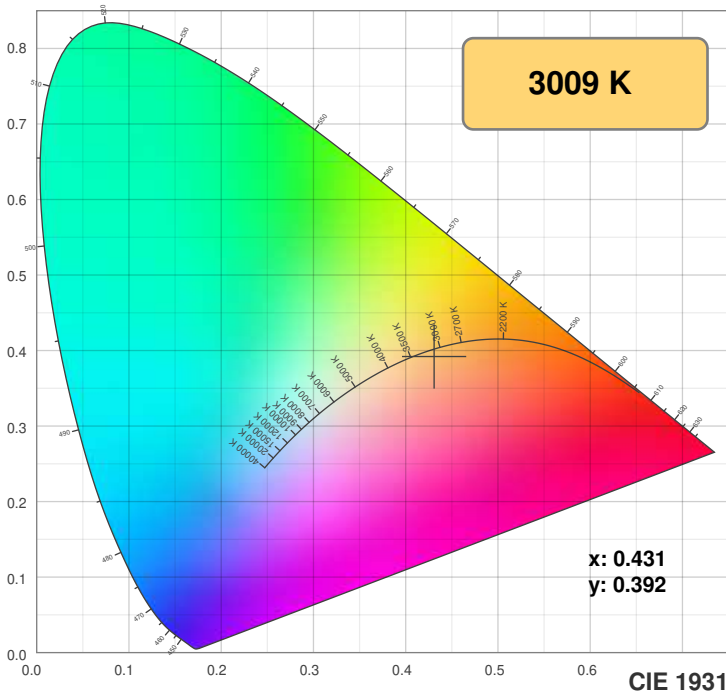
Power



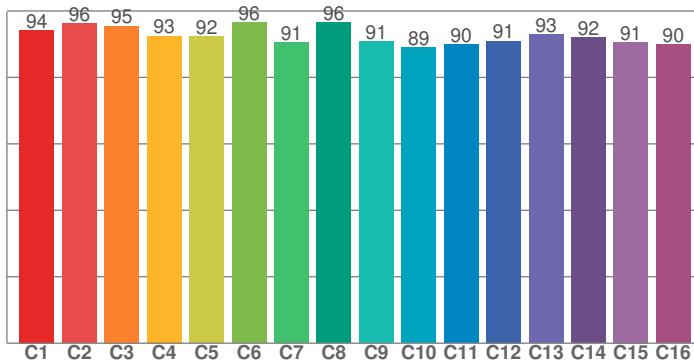
Voltage: 24.0 V
Current: 0.200 A
Frequency: 0 Hz

Color Details

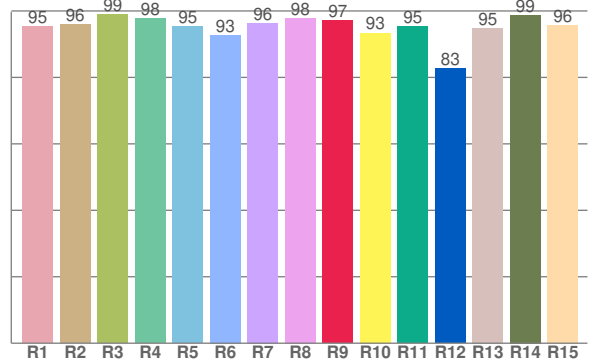
SW24-5.0_DRY_30



TM30: 92.6



CRI: 96.3 (R1-R8)



CRI R values, only R1-R8 are used to calculate final CRI value

R1	R2	R3	R4	R5	R6	R7	R8	R9	R10	R11	R12	R13	R14	R15
95.4	95.9	98.9	97.8	95.4	92.8	96.4	97.9	97.1	93.4	95.4	82.6	94.9	98.8	95.7

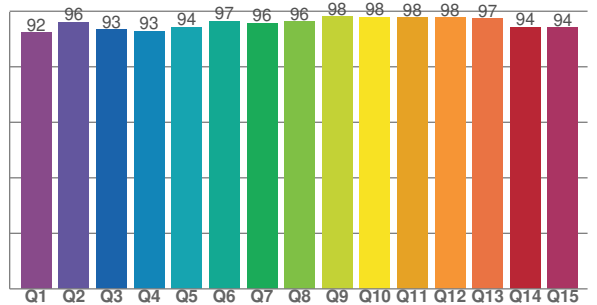
TM30 C values, 16 binned values out of total of 99 C values

C1	C2	C3	C4	C5	C6	C7	C8	C9	C10	C11	C12	C13	C14	C15	C16
94.2	96.2	95.5	92.5	92.3	96.5	90.5	96.5	90.8	89.0	89.9	91.0	92.8	92.0	90.6	89.9

CQS Q values

Q1	Q2	Q3	Q4	Q5	Q6	Q7	Q8	Q9	Q10	Q11	Q12	Q13	Q14	Q15
92.2	96.1	93.4	92.8	94.3	96.5	95.8	96.3	98.1	98.0	97.7	97.7	97.3	94.3	94.1

CQS: 95.0



Color parameters

Color temperature	Color rendering index	Red component	Color fidelity	Color gamut	Color quality scale	Color coordinate cie 1931	Color coordinate cie 1931	Color coordinate	Color coordinate	Color deviation from black body
CCT	CRI	CRI R9	TM30 Rf	TM30 Rg	CQS	x	y	u	v	Δuv
3009 K	96.3	97.1	92.6	100.8	95.0	0.431	0.392	0.252	0.344	-0.0040

TM30 Details

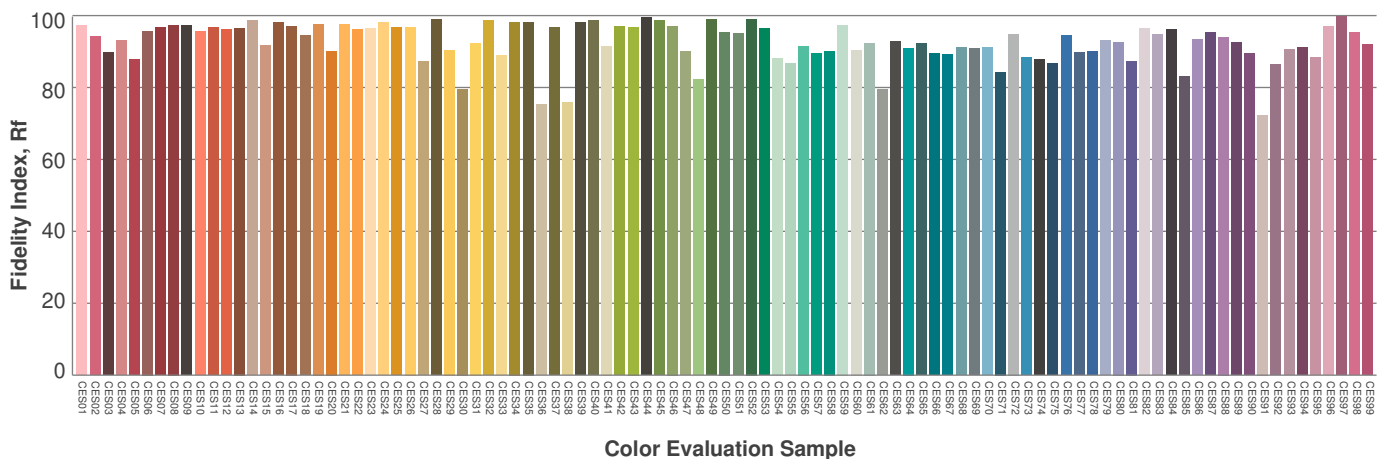
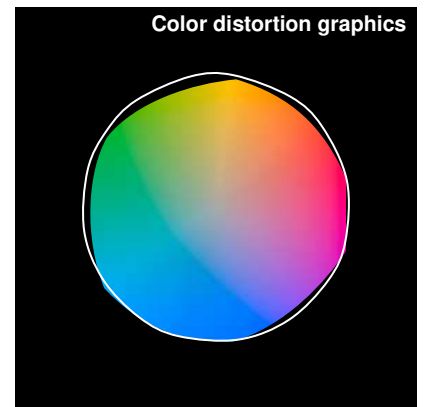
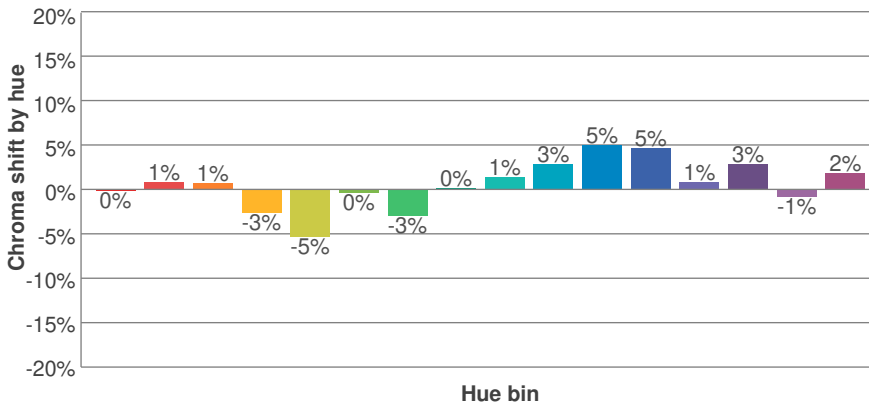
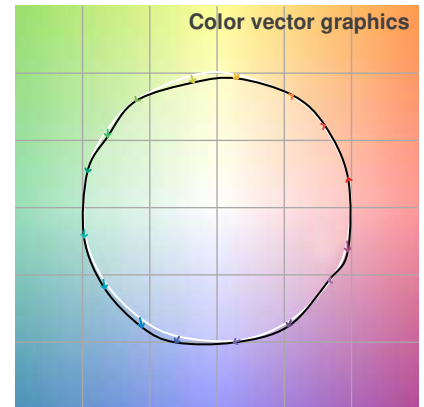
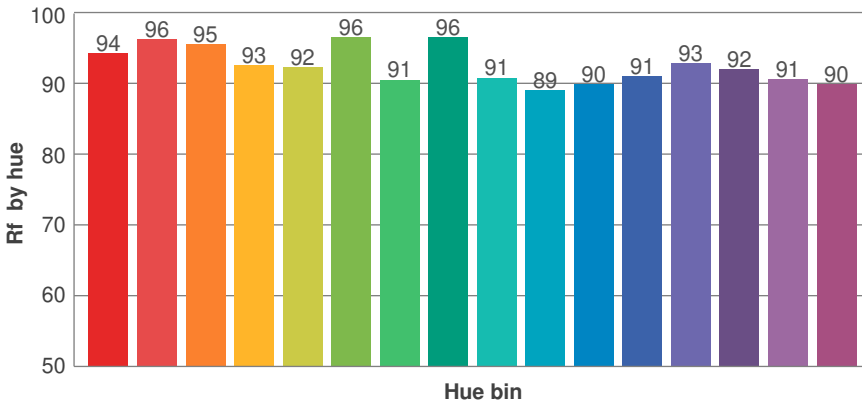
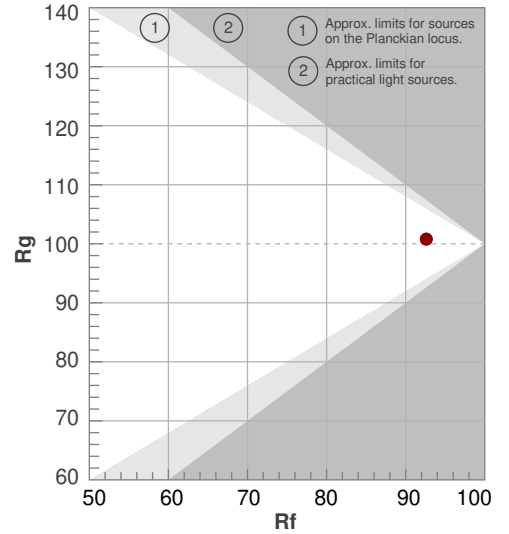
SW24-5.0_DRY_30



Rf 92.6
Fidelity index Rf

Rg 100.8
Gammut index Rg

Hue Bin	R _i	Graphic shifts (%)	
		Chroma	Hue
1	94	0%	2%
2	96	1%	0%
3	95	1%	0%
4	93	-3%	-3%
5	92	-5%	-1%
6	96	0%	1%
7	91	-3%	4%
8	96	0%	2%
9	91	1%	5%
10	89	3%	6%
11	90	5%	5%
12	91	5%	-2%
13	93	1%	-5%
14	92	3%	-4%
15	91	-1%	-1%
16	90	2%	-7%



Photometric Details

SW24-5.0_DRY_35



Product name: SW24-5.0_DRY_35	
Date: 2/22/2018	
Powering product: IQ-PH-80-120/24	
<hr/>	
Output:	428 lm/ft
Peak:	130 cd
Power:	4.8 W/ft
PF:	1.0



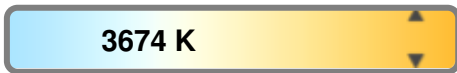
Light efficiency:



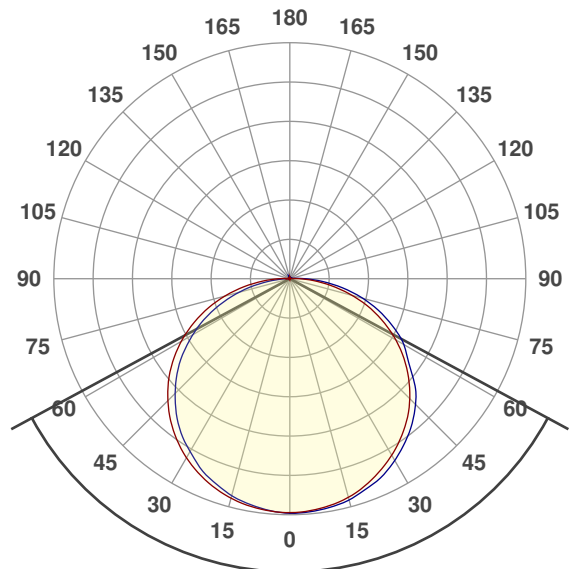
Light quality:



Color temperature:



Beam Angle

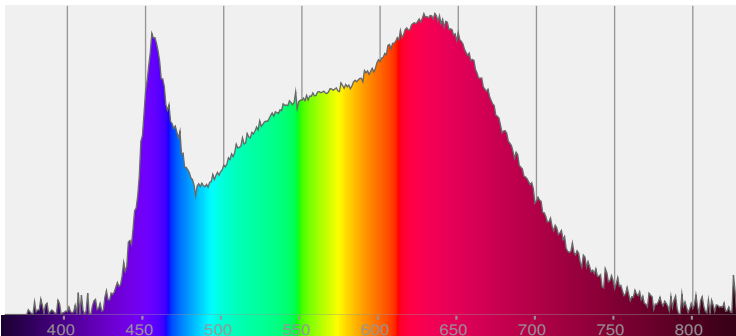


123.2°

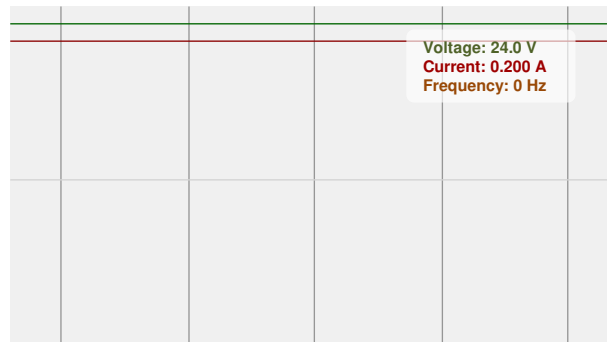
CIE 1931
x: 0.392
y: 0.375



Spectra



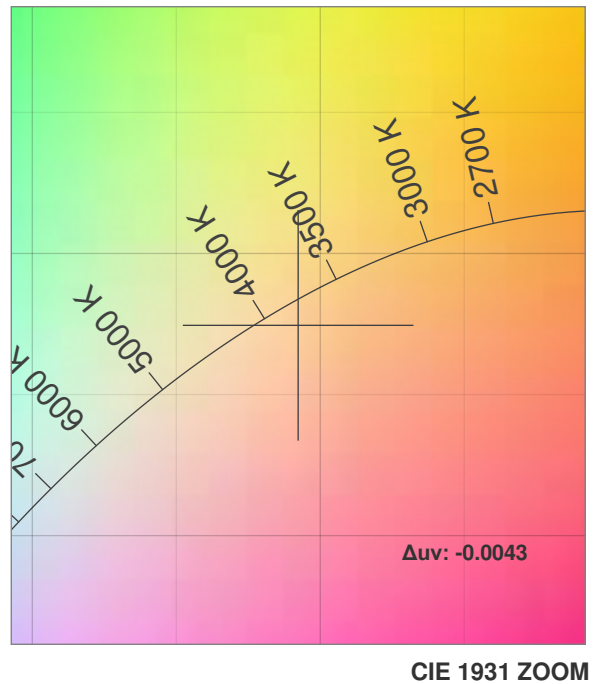
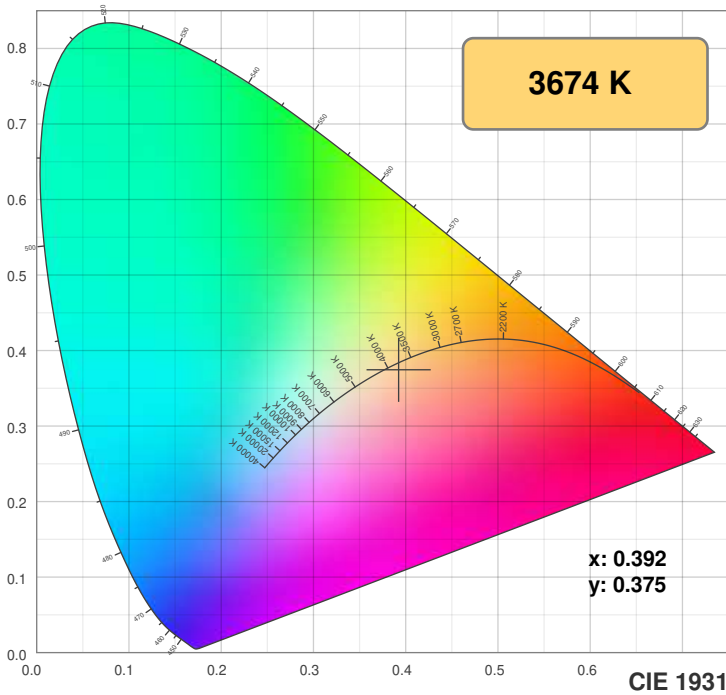
Power



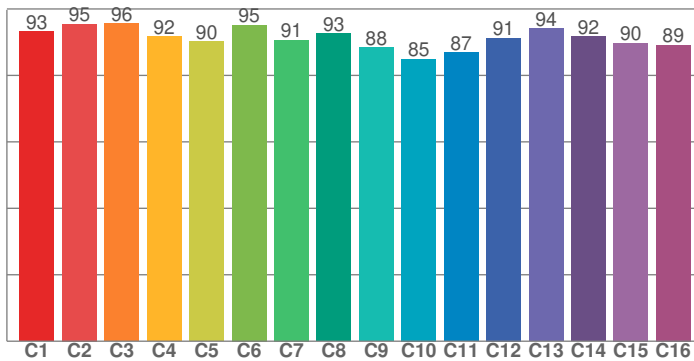
Voltage: 24.0 V
Current: 0.200 A
Frequency: 0 Hz

Color Details

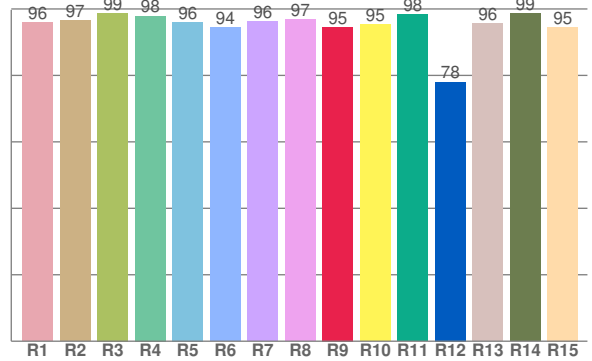
SW24-5.0_DRY_35



TM30: 91.1



CRI: 96.6 (R1-R8)



CRI R values, only R1-R8 are used to calculate final CRI value

R1	R2	R3	R4	R5	R6	R7	R8	R9	R10	R11	R12	R13	R14	R15
95.9	96.5	98.8	97.9	96.0	94.3	96.2	96.9	94.6	95.3	98.3	78.1	95.7	98.6	94.5

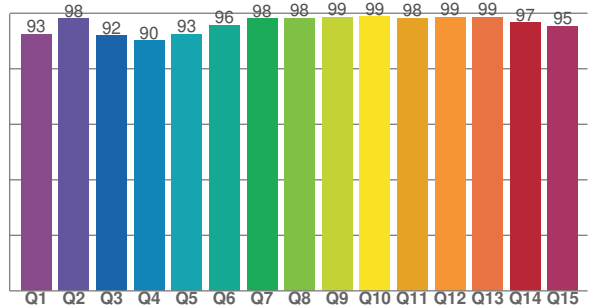
TM30 C values, 16 binned values out of total of 99 C values

C1	C2	C3	C4	C5	C6	C7	C8	C9	C10	C11	C12	C13	C14	C15	C16
93.2	95.5	95.6	91.8	90.2	95.2	90.7	92.7	88.4	85.0	86.9	91.3	94.1	91.8	89.8	89.2

CQS Q values

Q1	Q2	Q3	Q4	Q5	Q6	Q7	Q8	Q9	Q10	Q11	Q12	Q13	Q14	Q15
92.5	98.1	91.9	90.2	92.5	95.7	98.1	98.3	98.6	98.9	98.2	98.7	98.7	96.5	95.3

CQS: 95.2



Color parameters

Color temperature	Color rendering index	Red component	Color fidelity	Color gamut	Color quality scale	Color coordinate cie 1931	Color coordinate cie 1931	Color coordinate	Color coordinate	Color diviation from black body
CCT	CRI	CRI R9	TM30 Rf	TM30 Rg	CQS	x	y	u	v	Δuv
3674 K	96.6	94.6	91.1	99.8	95.2	0.392	0.375	0.234	0.335	-0.0043

TM30 Details

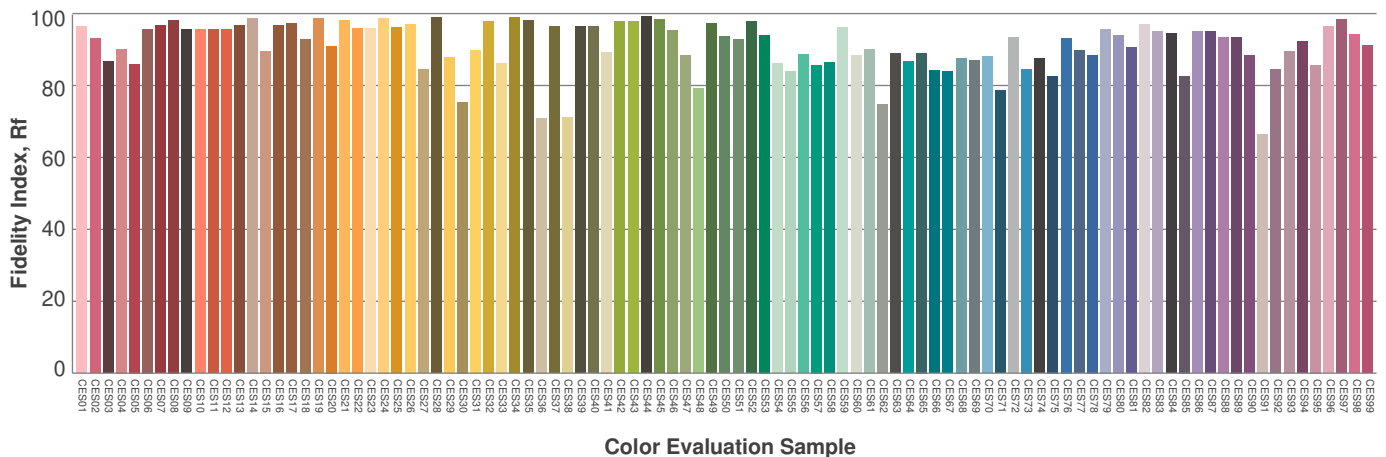
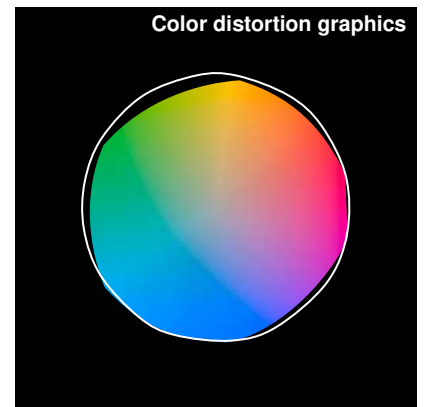
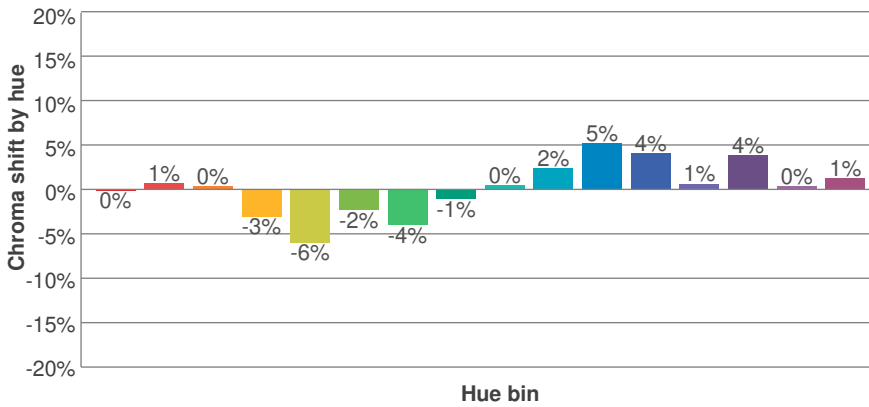
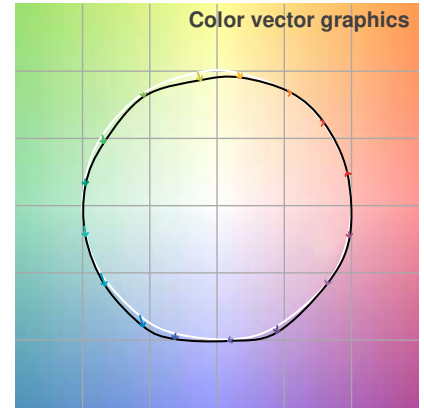
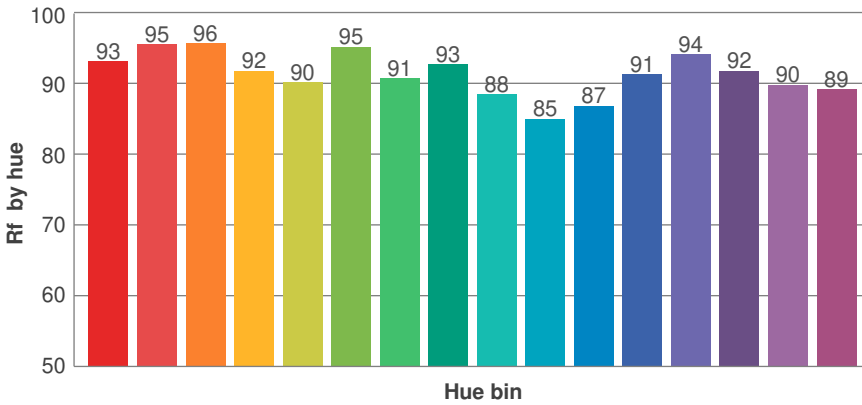
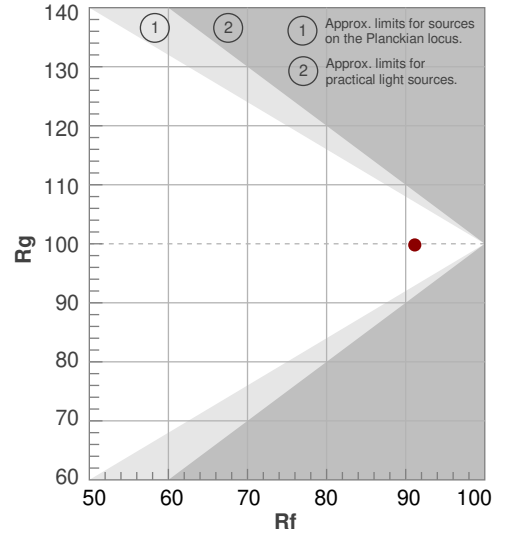
SW24-5.0_DRY_35



Rf 91.1
Fidelity index Rf

Rg 99.8
Gammut index Rg

Hue Bin	R _f	Graphic shifts (%)	
		Chroma	Hue
1	93	0%	1%
2	95	1%	0%
3	96	0%	0%
4	92	-3%	-3%
5	90	-6%	-1%
6	95	-2%	1%
7	91	-4%	4%
8	93	-1%	4%
9	88	0%	7%
10	85	2%	9%
11	87	5%	6%
12	91	4%	0%
13	94	1%	-3%
14	92	4%	-3%
15	90	0%	-2%
16	89	1%	-4%



Photometric Details

SW24-5.0_DRY_40



Product name: SW24-5.0_DRY_40	
Date: 5/29/2018	
Powering product: IQ-PH-80-120/24	
<hr/>	
Output:	442 lm/ft
Peak:	133 cd
Power:	4.8 W/ft
PF:	1.0



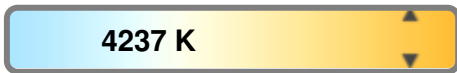
Light efficiency:



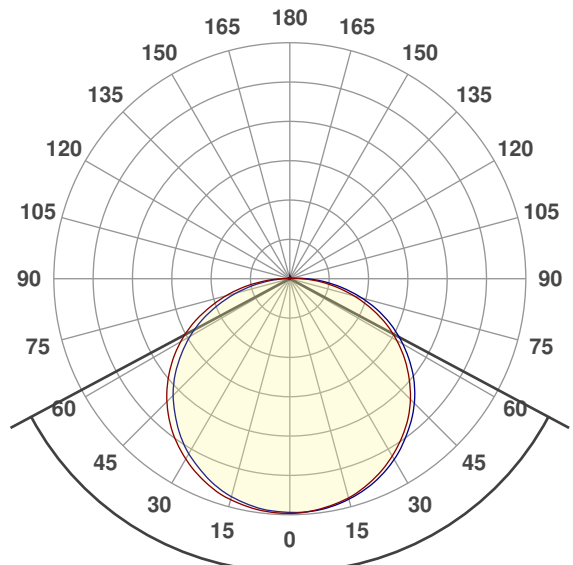
Light quality:



Color temperature:



Beam Angle

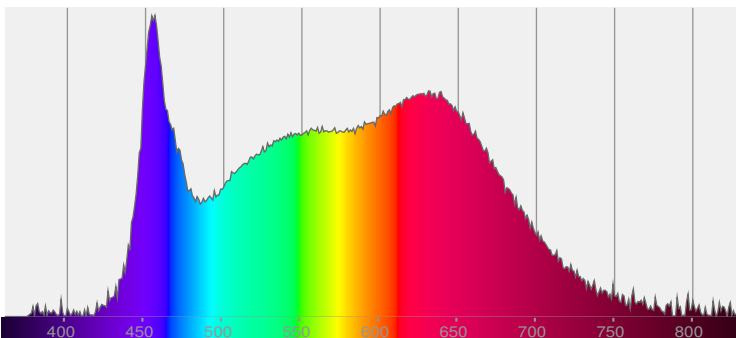


123.8°

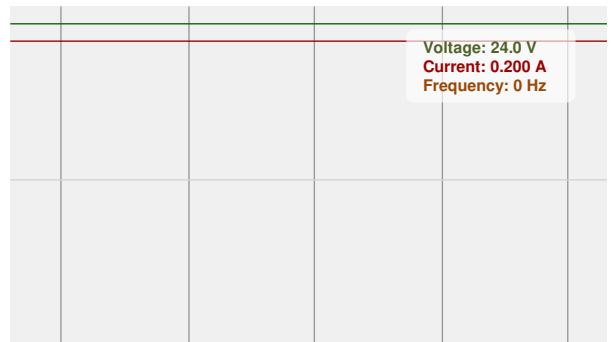


CIE 1931
x: 0.368
y: 0.358

Spectra

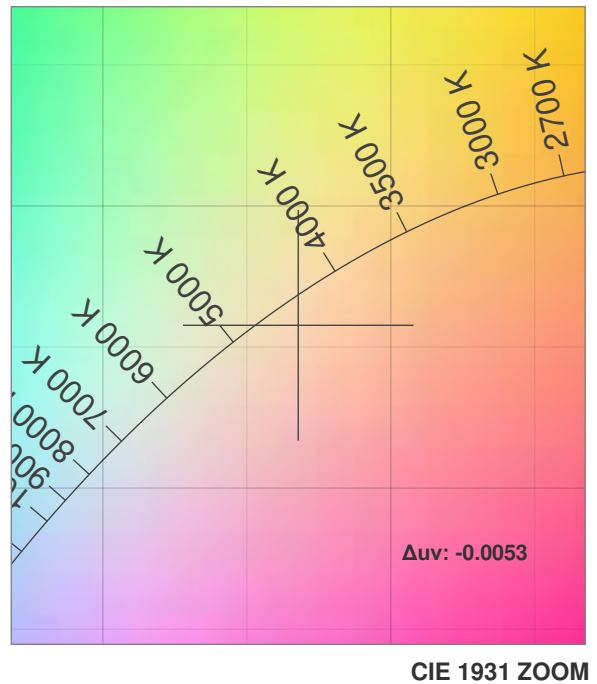
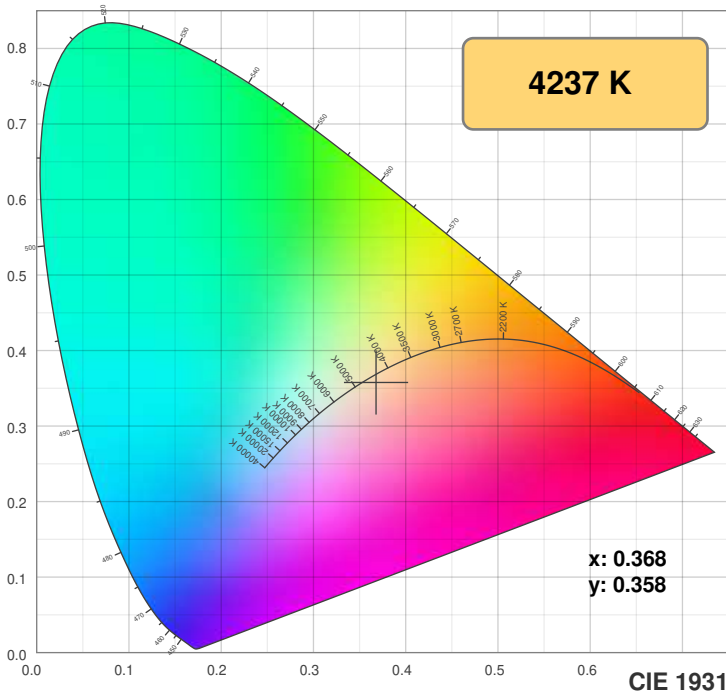


Power

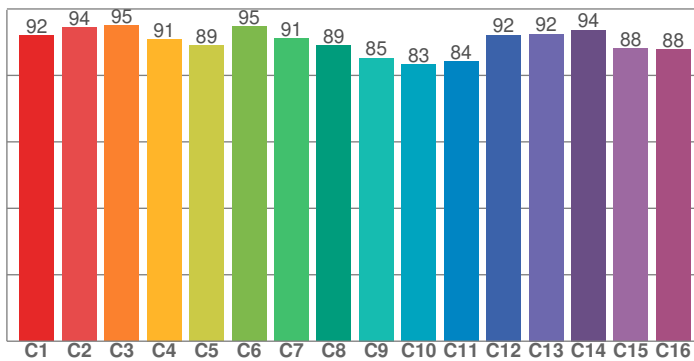


Color Details

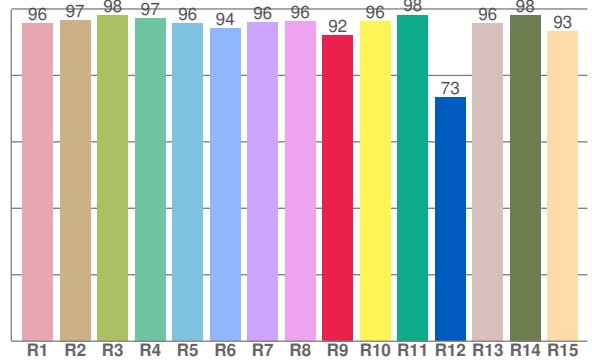
SW24-5.0_DRY_40



TM30: 89.9



CRI: 96.2 (R1-R8)



CRI R values, only R1-R8 are used to calculate final CRI value

R1	R2	R3	R4	R5	R6	R7	R8	R9	R10	R11	R12	R13	R14	R15
95.7	96.7	98.0	97.2	95.6	94.1	96.1	96.2	92.2	96.3	98.2	73.4	95.8	98.2	93.2

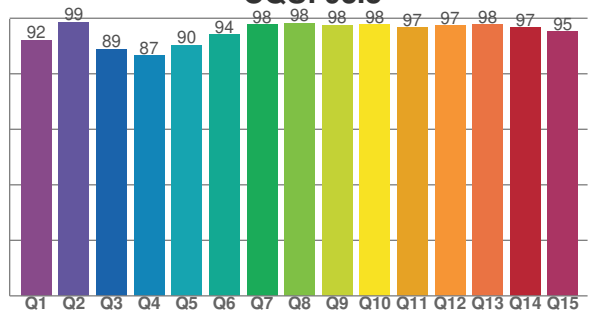
TM30 C values, 16 binned values out of total of 99 C values

C1	C2	C3	C4	C5	C6	C7	C8	C9	C10	C11	C12	C13	C14	C15	C16
91.9	94.5	95.1	90.9	89.1	94.8	91.2	89.0	85.2	83.2	84.2	92.2	92.5	93.7	88.0	87.7

CQS Q values

Q1	Q2	Q3	Q4	Q5	Q6	Q7	Q8	Q9	Q10	Q11	Q12	Q13	Q14	Q15
92.2	98.6	88.8	86.6	90.4	94.2	97.7	98.2	97.5	97.7	96.6	97.4	97.8	96.6	95.1

CQS: 93.8



Color parameters

Color temperature	Color rendering index	Red component	Color fidelity	Color gamut	Color quality scale	Color coordinate cie 1931	Color coordinate cie 1931	Color coordinate	Color coordinate	Color diviation from black body
CCT	CRI	CRI R9	TM30 Rf	TM30 Rg	CQS	x	y	u	v	Δuv
4237 K	96.2	92.2	89.9	99.8	93.8	0.368	0.358	0.224	0.327	-0.0053

TM30 Details

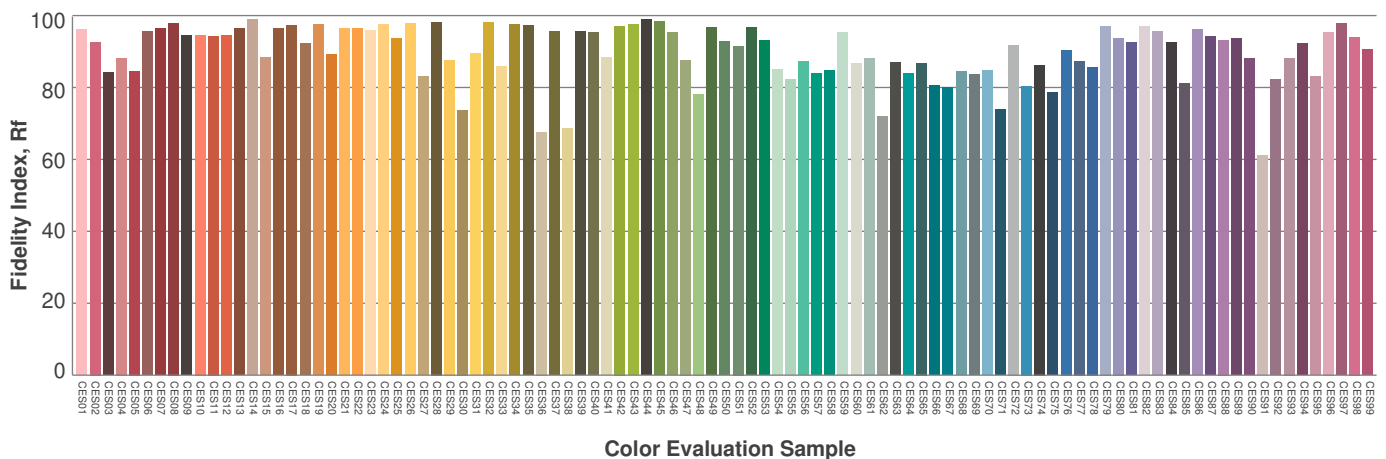
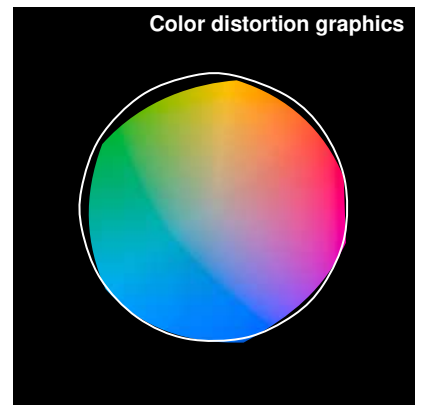
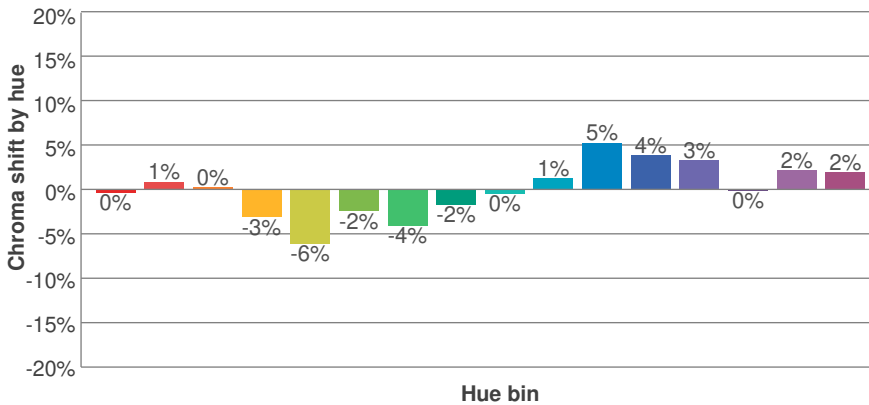
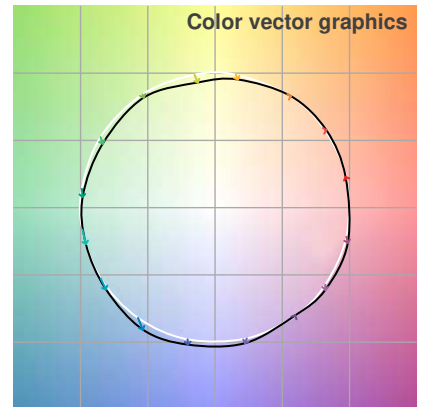
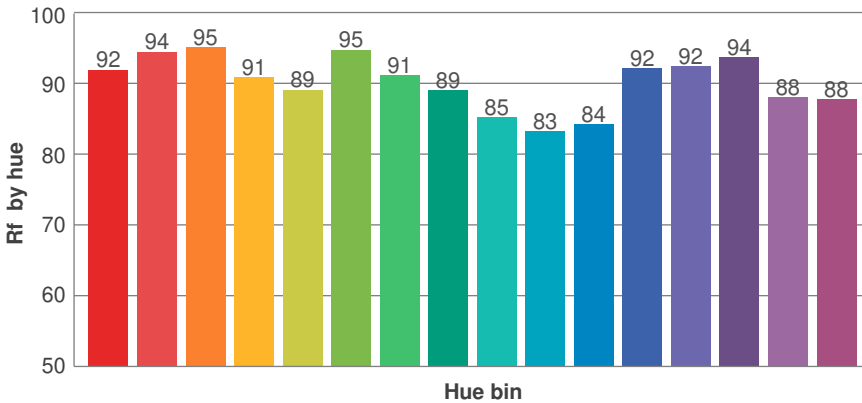
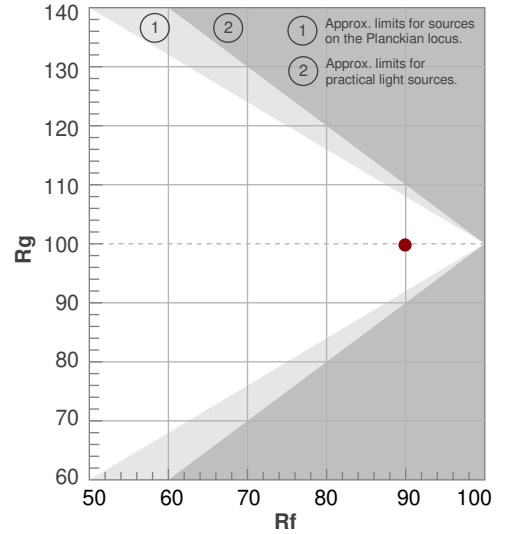
SW24-5.0_DRY_40



Rf 89.9
Fidelity index Rf

Rg 99.8
Gammut index Rg

Hue Bin	R _f	Graphic shifts (%)	
		Chroma	Hue
1	92	0%	2%
2	94	1%	0%
3	95	0%	0%
4	91	-3%	-2%
5	89	-6%	-1%
6	95	-2%	1%
7	91	-4%	3%
8	89	-2%	6%
9	85	0%	11%
10	83	1%	9%
11	84	5%	8%
12	92	4%	1%
13	92	3%	-2%
14	94	0%	0%
15	88	2%	-3%
16	88	2%	-4%



Color Evaluation Sample