

# RESOURCE GUIDE

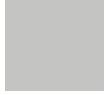
## EXTRUSIONS - SURFACE - ROND

Model: iQA



### FINISH

#### SATIN



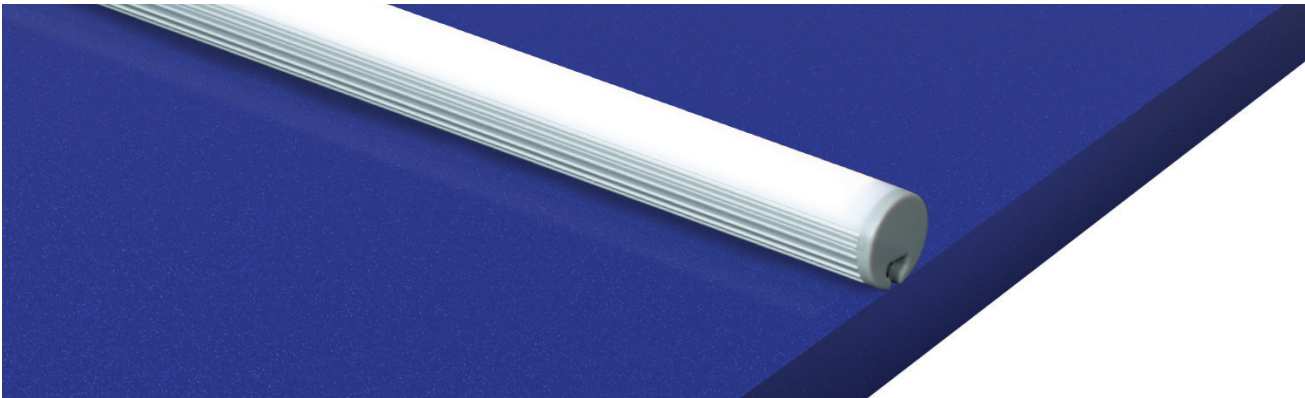
SATIN ANODIZED  
MATTE FINISH  
GREY ENDCAPS

#### BLACK



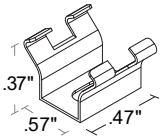
BLACK ANODIZED  
MATTE FINISH  
BLACK ENDCAPS

### MOUNTING TYPE - SURFACE



### MOUNTING - HARDWARE

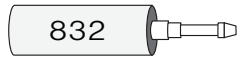
#### Stainless Steel Clip (SST)



2 clips provided for 4' or less;  
4 clips provided for greater than 4'

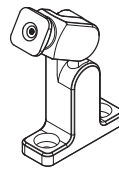
- Stainless Steel
- Indoor/Outdoor
- #4 x 5/8" Flat Head SS  
(1 per clip included)

#### 832 (see Accessory cutsheet)



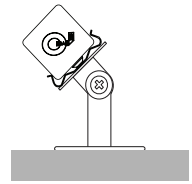
- Strong adhesive
- Not submersible,  
For dry and wet  
locations only

#### Q-ANGLE (see Accessory cutsheet)



- Adjustable mounting bracket
- Indoor/Outdoor

#### PIVOT BRACKET (see Accessory cutsheet)



- Adjustable mounting bracket
- Indoor

### LENS

CL Clear

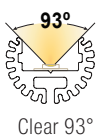
FR Frosted

PR Polar

DF Diffused



### CUT OFF



# RESOURCE GUIDE

## EXTRUSIONS - SURFACE - ROND

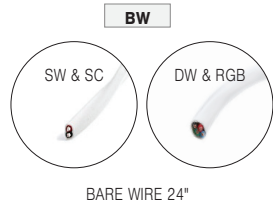
Model: iQA



### CONNECTORS/WIRE

STATIC WHITE AND STATIC COLOR ONLY

### LIGHT ORIENTATION



SYMMETRICAL

**TYPE** To order a bare extrusion without a strip installed in Q-Tran factory, choose **NI** (Not Installed) for your Type option

