

RESOURCE GUIDE

EXTRUSIONS - SURFACE - ROND

Model: iQA



FINISH

SATIN



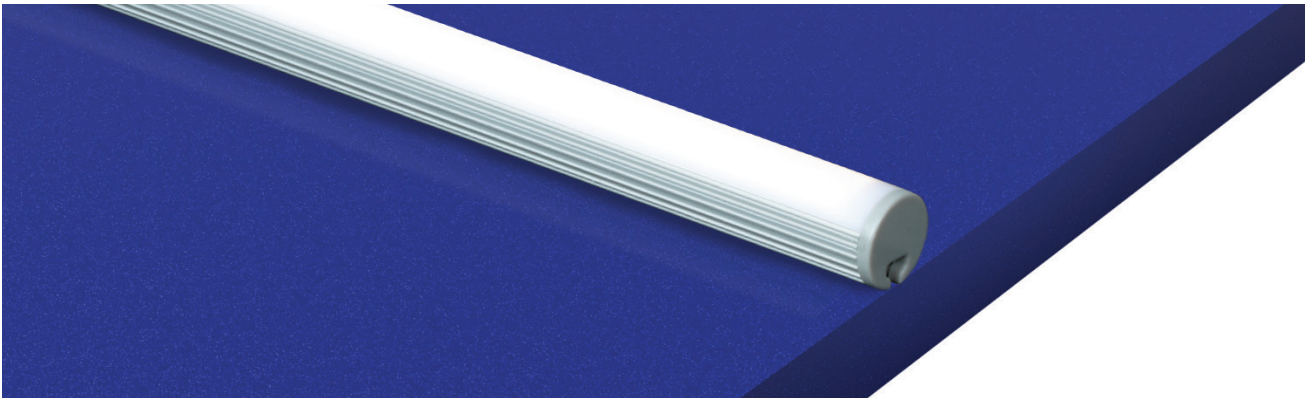
SATIN ANODIZED
MATTE FINISH
GREY ENDCAPS

BLACK



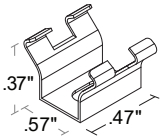
BLACK ANODIZED
MATTE FINISH
BLACK ENDCAPS

MOUNTING TYPE - SURFACE



MOUNTING - HARDWARE

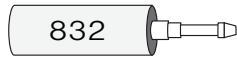
Stainless Steel Clip (SST)



2 clips provided for 4' or less;
4 clips provided for greater than 4'

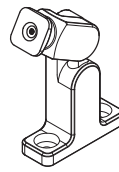
- Stainless Steel
- Indoor/Outdoor
- #4 x 5/8" Flat Head SS (1 per clip included)

832 (see Accessory cutsheet)



- Strong adhesive
- Not submersible, For dry and wet locations only

Q-ANGLE (see Accessory cutsheet)



- Adjustable mounting bracket
- Indoor/Outdoor

PIVOT BRACKET (see Accessory cutsheet)



- Adjustable mounting bracket
- Indoor

LENS

CL Clear

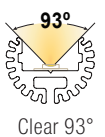
FR Frosted

PR Polar

DF Diffused



CUT OFF



RESOURCE GUIDE

EXTRUSIONS - SURFACE - ROND

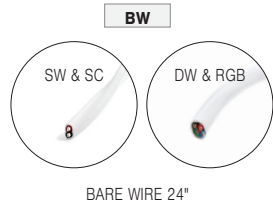
Model: iQA



CONNECTORS/WIRE

STATIC WHITE AND STATIC COLOR ONLY

LIGHT ORIENTATION



SYMMETRICAL

TYPE To order a bare extrusion without a strip installed in Q-Tran factory, choose **NI** (Not Installed) for your Type option

