

Photometric Details

DW24-6.0_DRY_20



Product name: DW24-6.0_DRY_20	
Date: 1/14/2019	
Powering product: IQ-PH-80-120/24	
<hr/>	
Output:	221 lm/ft
Peak:	66.5 cd
Power:	2.9 W/ft
PF:	1.0



Light efficiency:



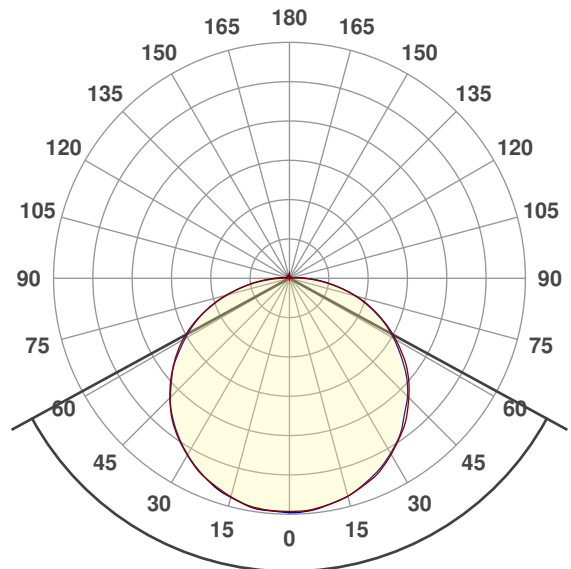
Light quality:



Color temperature:



Beam Angle

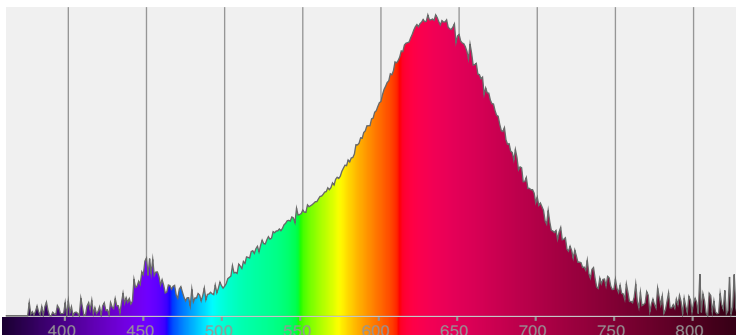


122.8°

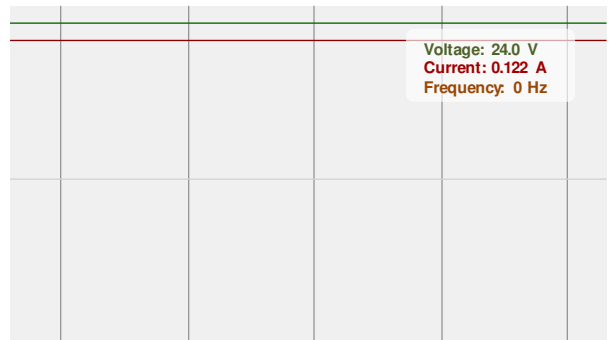


CIE 1931
x: 0.517
y: 0.404

Spectra

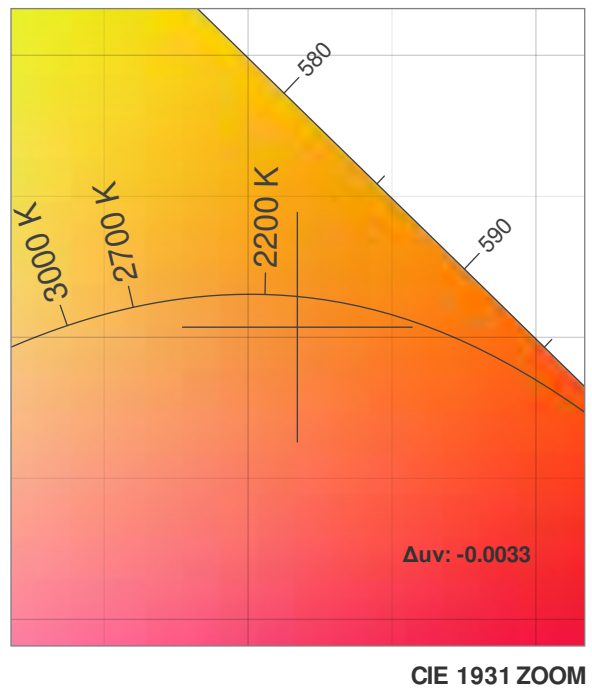
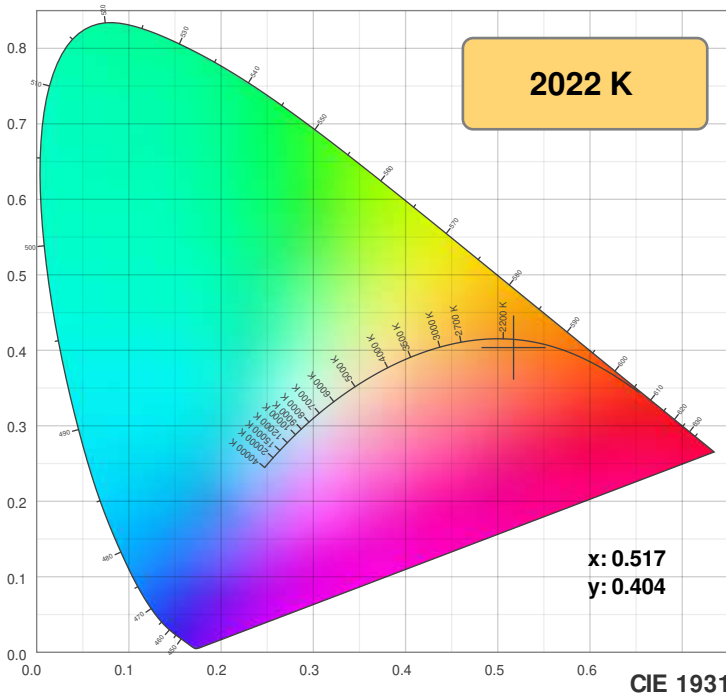


Power

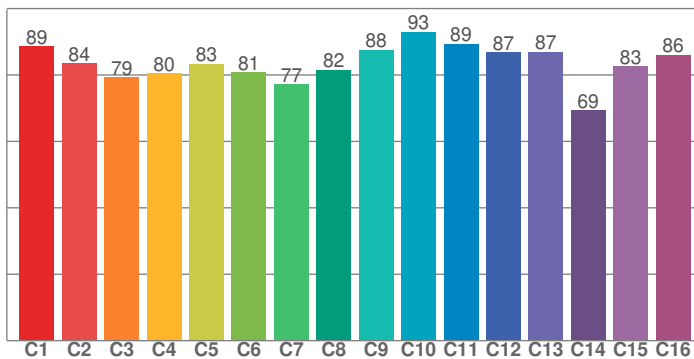


Color Details

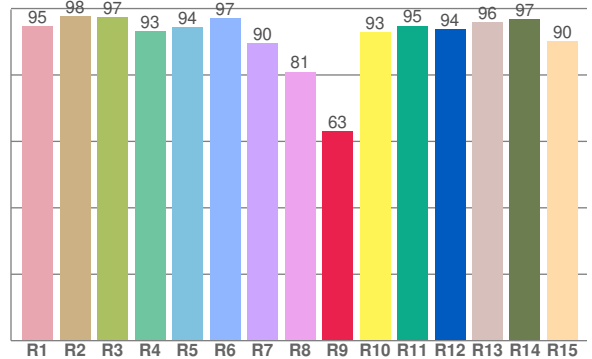
DW24-6.0_DRY_20



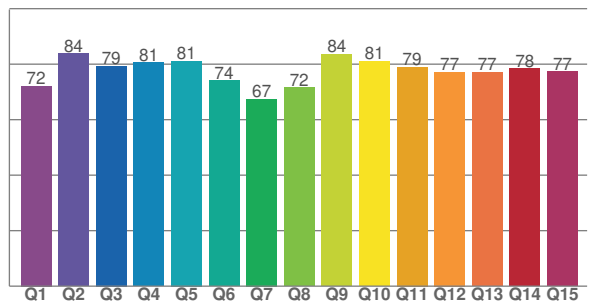
TM30: 84.7



CRI: 93.1 (R1-R8)



CQS: 76.6



CRI R values, only R1-R8 are used to calculate final CRI value

R1	R2	R3	R4	R5	R6	R7	R8	R9	R10	R11	R12	R13	R14	R15
94.6	97.8	97.3	93.2	94.3	97.1	89.5	81.0	83.0	92.9	94.8	93.7	95.9	96.8	90.1

TM30 C values, 16 binned values out of total of 99 C values

C1	C2	C3	C4	C5	C6	C7	C8	C9	C10	C11	C12	C13	C14	C15	C16
88.5	83.5	79.3	80.5	83.3	80.8	77.1	81.6	87.6	93.0	89.4	86.8	86.9	69.4	82.6	86.1

CQS Q values

Q1	Q2	Q3	Q4	Q5	Q6	Q7	Q8	Q9	Q10	Q11	Q12	Q13	Q14	Q15
72.2	83.7	79.4	80.5	81.1	74.0	67.4	71.5	83.6	81.0	79.0	77.2	77.1	78.4	77.4

Color parameters

Color temperature	Color rendering index	Red component	Color fidelity	Color gamut	Color quality scale	Color coordinate cie 1931	Color coordinate cie 1931	Color coordinate	Color coordinate	Color deviation from black body
CCT	CRI	CRI R9	TM30 Rf	TM30 Rg	CQS	x	y	u	v	Δuv
2022 K	93.1	63.0	84.7	106.7	76.6	0.517	0.404	0.304	0.356	-0.0033

TM30 Details

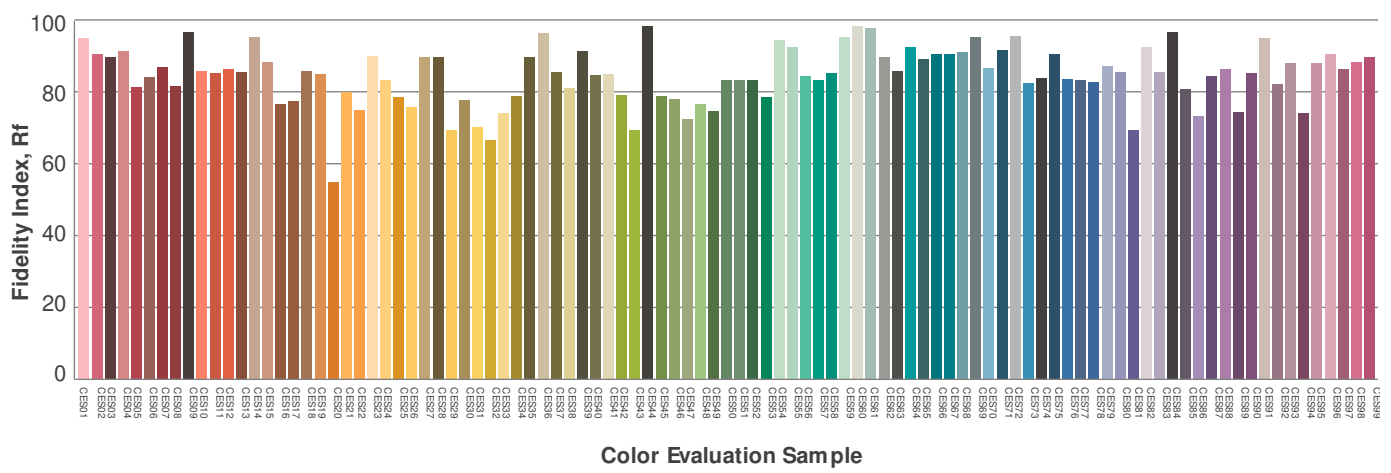
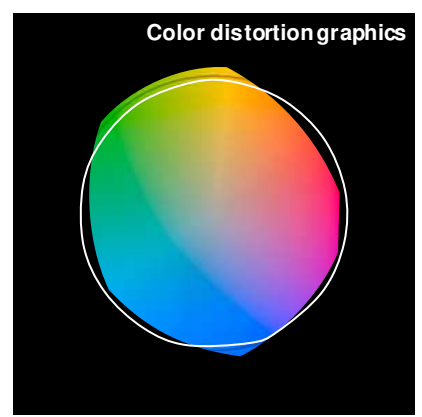
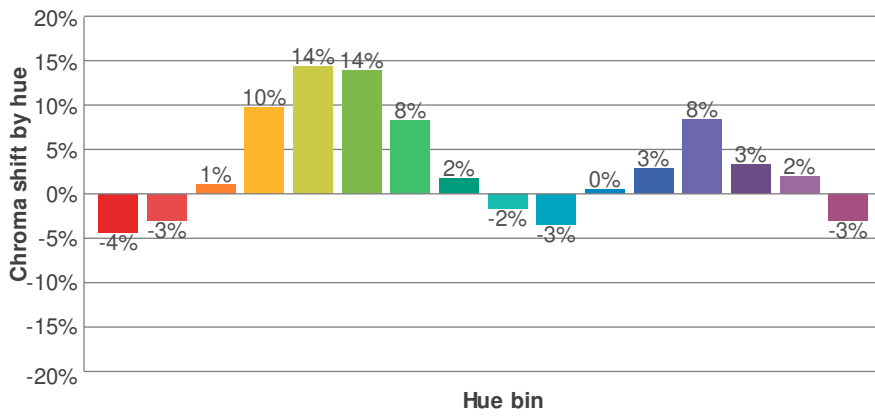
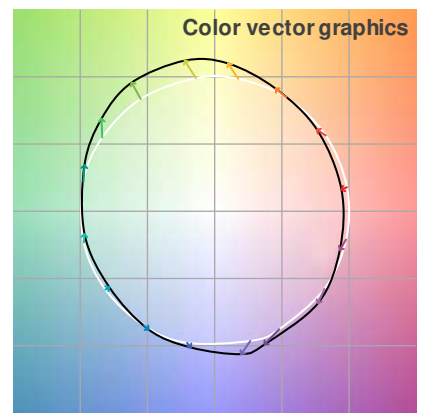
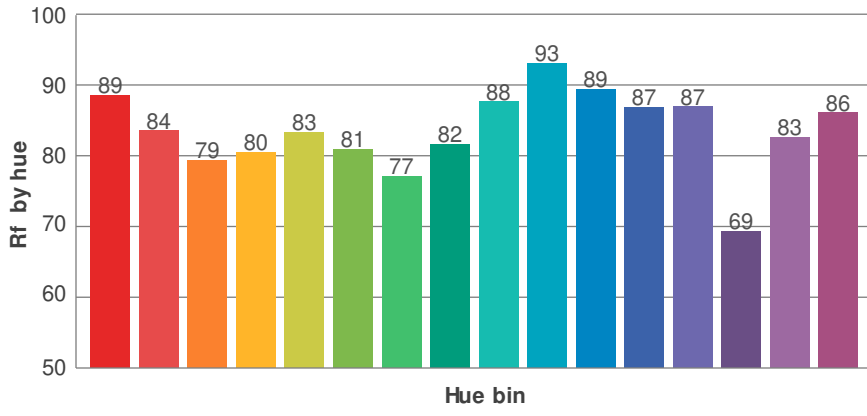
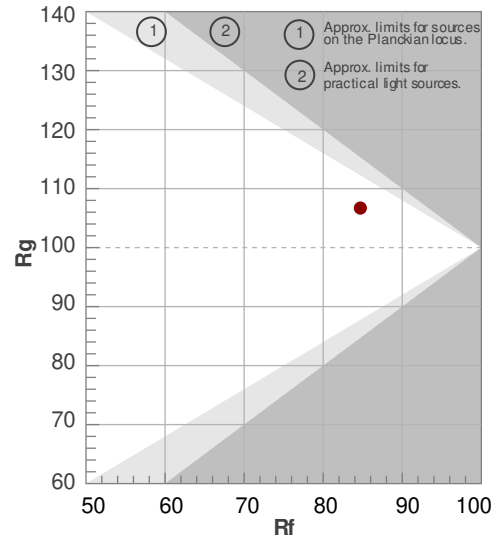
DW24-6.0_DRY_20



Rf 84.7
Fidelity index Rf

Rg 106.7
Gammut index Rg

Hue Bin	R _f	Graphic shifts (%)	
		Chroma	Hue
1	89	-4%	-1%
2	84	-3%	7%
3	79	1%	10%
4	80	10%	10%
5	83	14%	6%
6	81	14%	-1%
7	77	8%	-11%
8	82	2%	-12%
9	88	-2%	-6%
10	93	-3%	0%
11	89	0%	4%
12	87	3%	3%
13	87	8%	-9%
14	69	3%	-15%
15	83	2%	-11%
16	86	-3%	-8%



Photometric Details

DW24-6.0_DRY_27



Product name: DW24-6.0_DRY_27	
Date: 1/28/2019	
Powering product: IQ-PH-80-120/24	
<hr/>	
Output:	242 lm/ft
Peak:	73.3 cd
Power:	2.9 W/ft
PF:	1.0



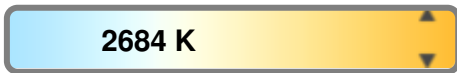
Light efficiency:



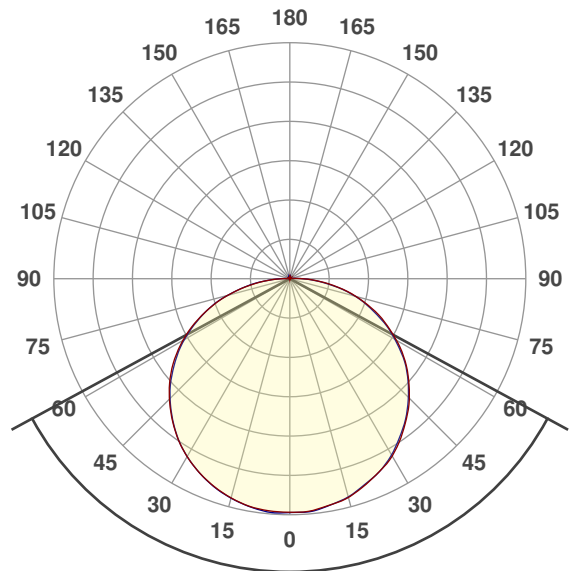
Light quality:



Color temperature:



Beam Angle

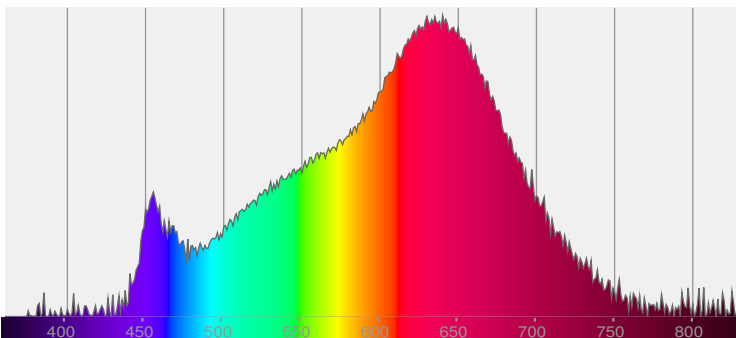


123°

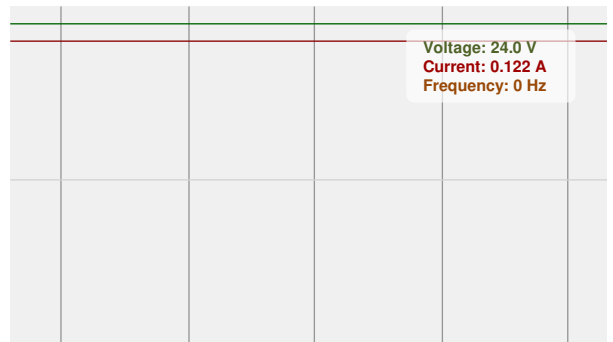


CIE 1931
x: 0.455
y: 0.399

Spectra



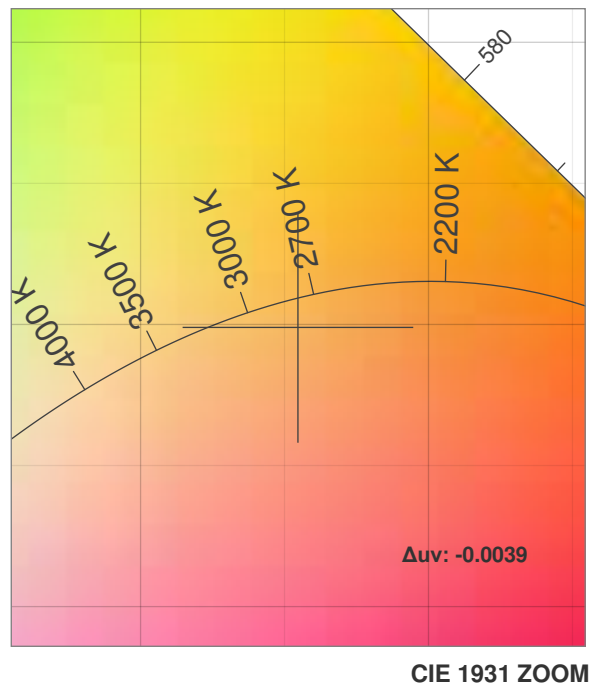
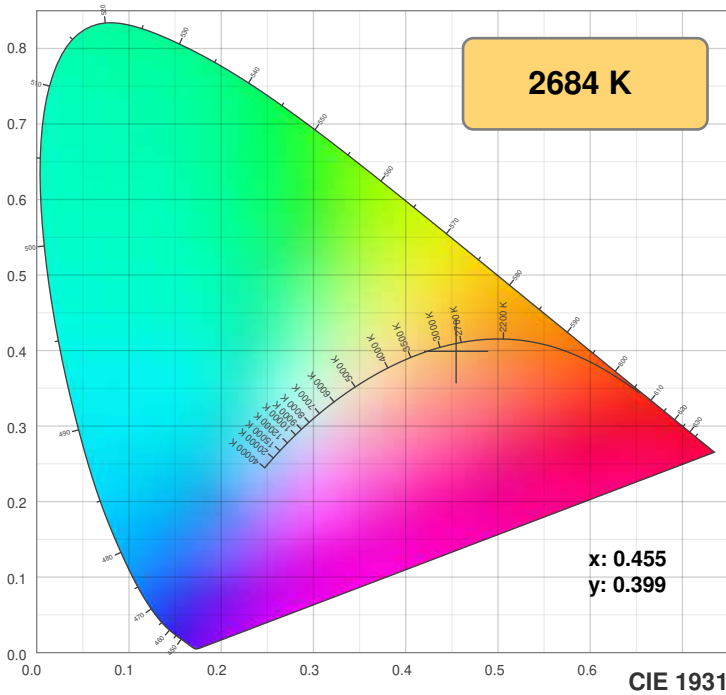
Power



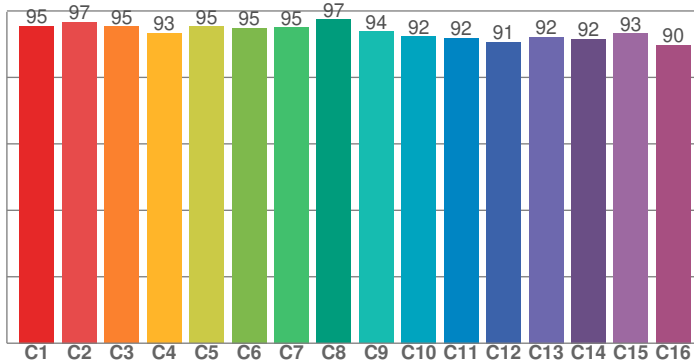
Voltage: 24.0 V
Current: 0.122 A
Frequency: 0 Hz

Color Details

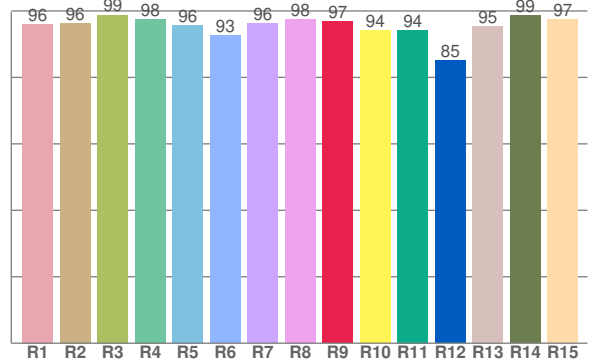
DW24-6.0_DRY_27



TM30: 93.8



CRI: 96.4 (R1-R8)



CRI R values, only R1-R8 are used to calculate final CRI value

R1	R2	R3	R4	R5	R6	R7	R8	R9	R10	R11	R12	R13	R14	R15
96.0	96.3	98.8	97.5	95.8	92.7	96.2	97.6	96.8	94.2	94.3	85.0	95.5	98.5	97.4

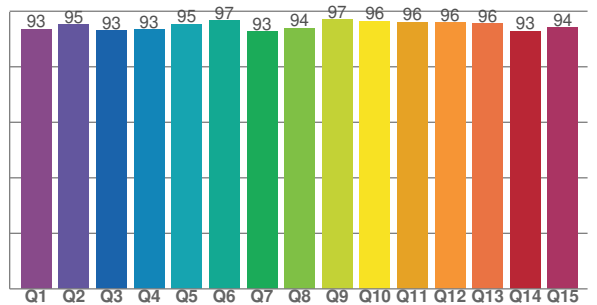
TM30 C values, 16 binned values out of total of 99 C values

C1	C2	C3	C4	C5	C6	C7	C8	C9	C10	C11	C12	C13	C14	C15	C16
95.5	96.7	95.4	93.4	95.4	94.9	95.1	97.4	93.9	92.4	91.9	90.6	92.1	91.6	93.3	89.8

CQS Q values

Q1	Q2	Q3	Q4	Q5	Q6	Q7	Q8	Q9	Q10	Q11	Q12	Q13	Q14	Q15
93.5	95.2	93.0	93.3	95.4	96.7	92.7	94.0	97.0	96.4	96.0	95.9	95.5	92.9	94.2

CQS: 94.4



Color parameters

Color temperature	Color rendering index	Red component	Color fidelity	Color gamut	Color quality scale	Color coordinate cie 1931	Color coordinate cie 1931	Color coordinate	Color coordinate	Color deviation from black body
CCT	CRI	CRI R9	TM30 Rf	TM30 Rg	CQS	x	y	u	v	Δuv
2684 K	96.4	96.8	93.8	101.9	94.4	0.455	0.399	0.264	0.348	-0.0039

TM30 Details

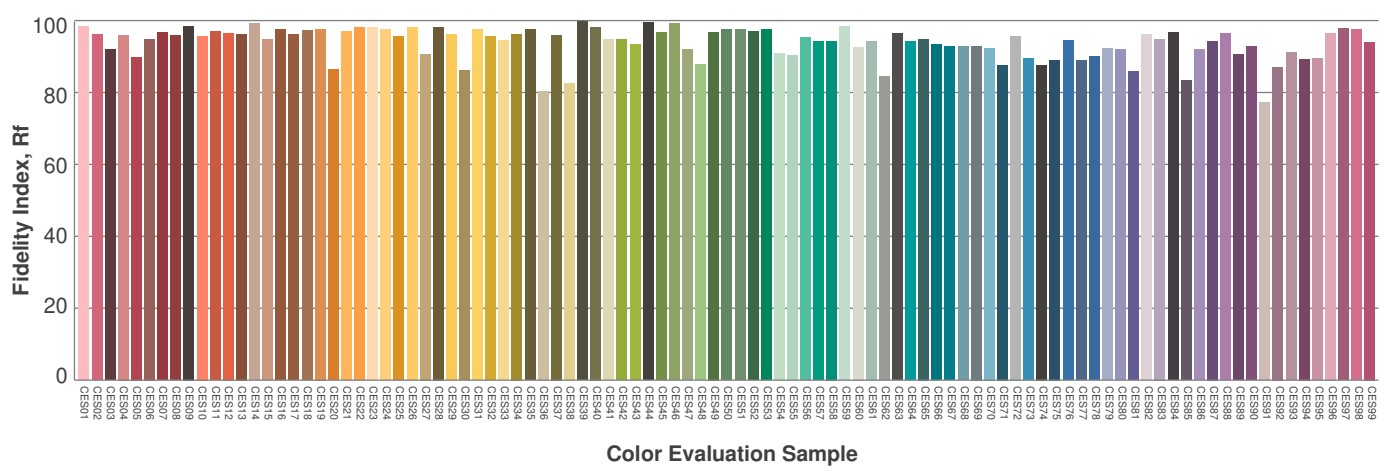
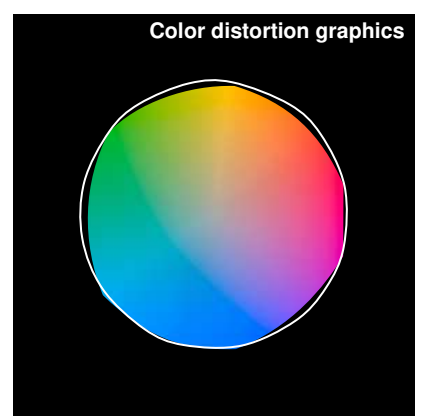
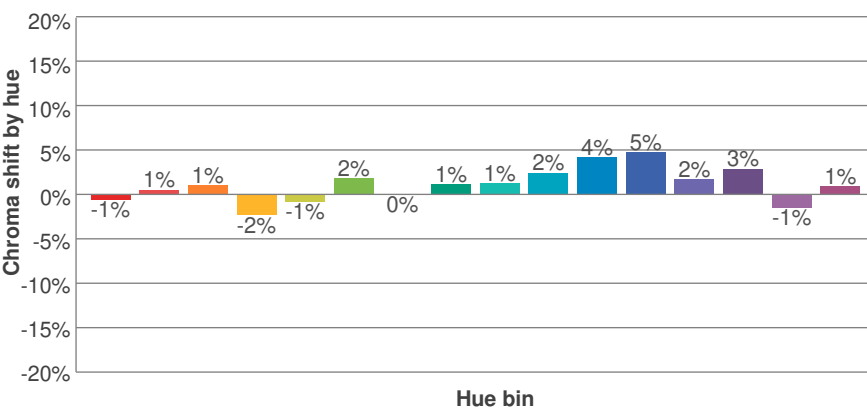
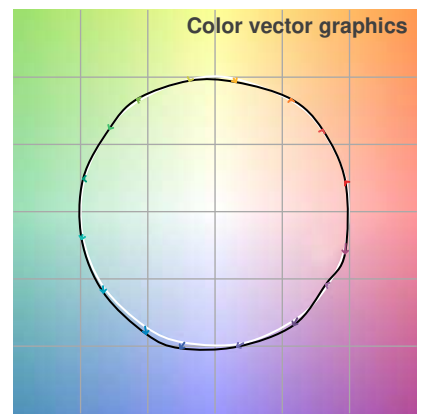
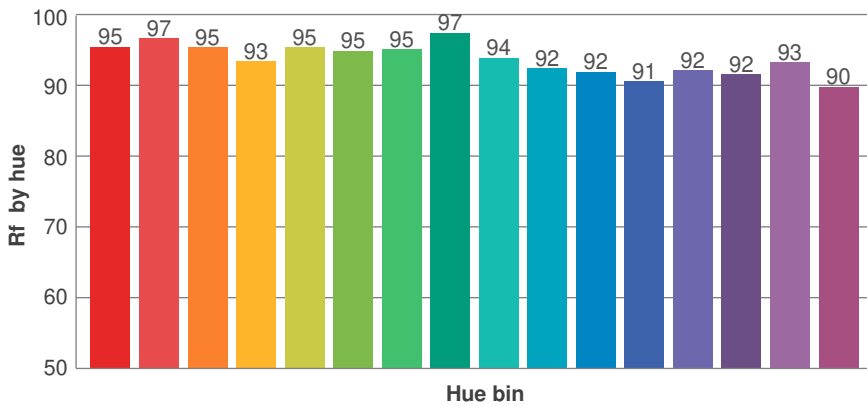
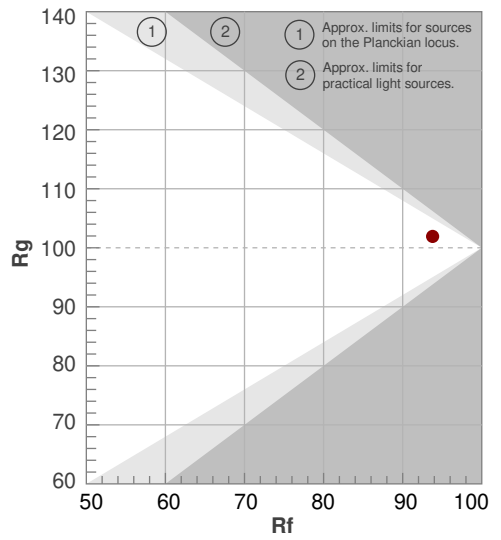
DW24-6.0_DRY_27



Rf 93.8
Fidelity index Rf

Rg 101.9
Gammut index Rg

Hue Bin	R _i	Graphic shifts (%)	
		Chroma	Hue
1	95	-1%	1%
2	97	1%	0%
3	95	1%	1%
4	93	-2%	-2%
5	95	-1%	1%
6	95	2%	1%
7	95	0%	1%
8	97	1%	0%
9	94	1%	3%
10	92	2%	4%
11	92	4%	4%
12	91	5%	-2%
13	92	2%	-5%
14	92	3%	-5%
15	93	-1%	0%
16	90	1%	-7%



Photometric Details

DW24-6.0_DRY_30



Product name: DW24-6.0_DRY_30	
Date: 1/14/2019	
Powering product: IQ-PH-80-120/24	
<hr/>	
Output:	261 lm/ft
Peak:	77.9 cd
Power:	2.9 W/ft
PF:	1.0



Light efficiency:



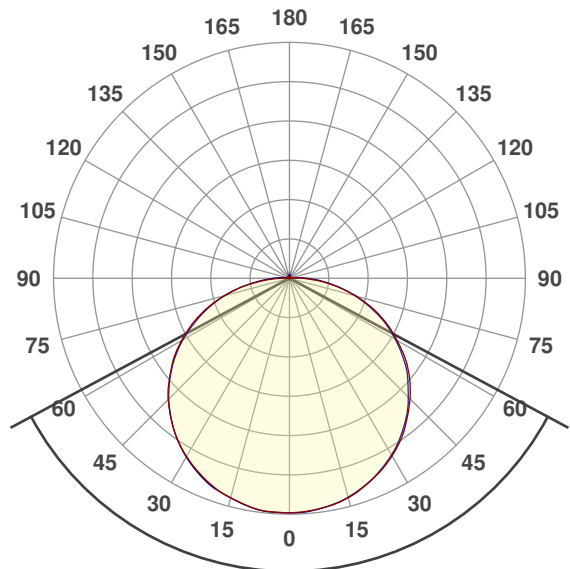
Light quality:



Color temperature:



Beam Angle

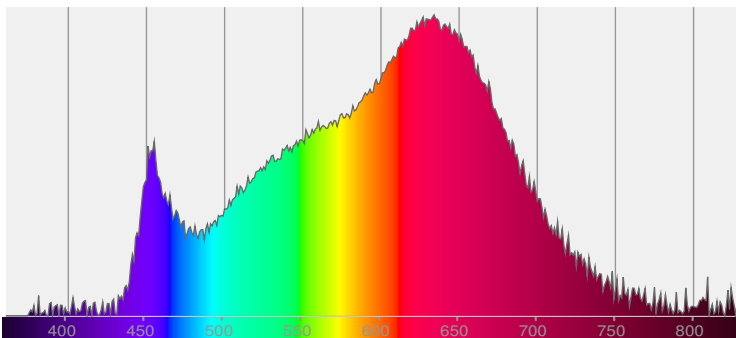


123.6°

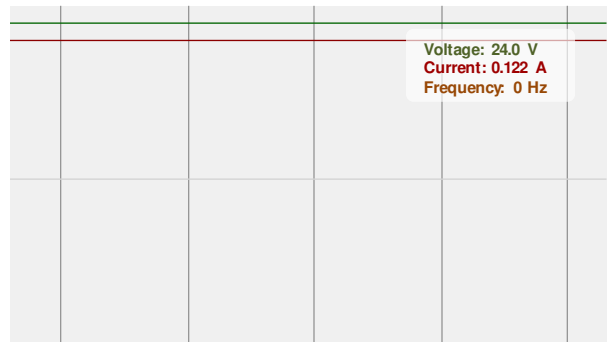


CIE 1931
x: 0.432
y: 0.394

Spectra

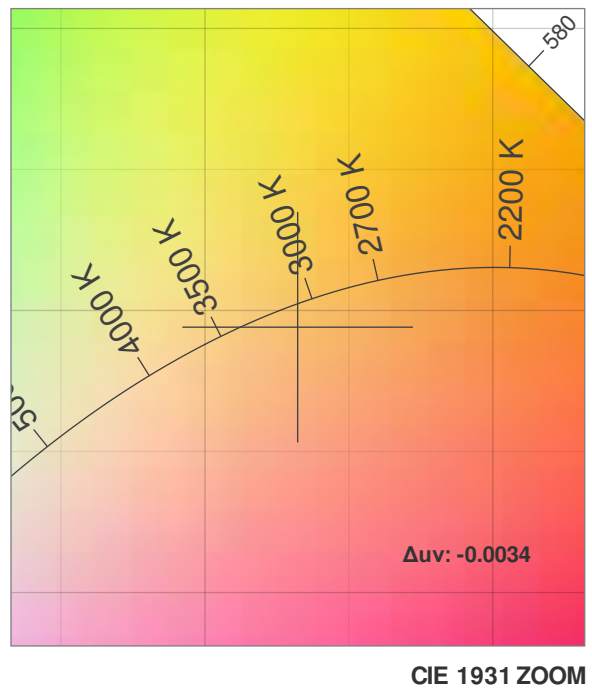
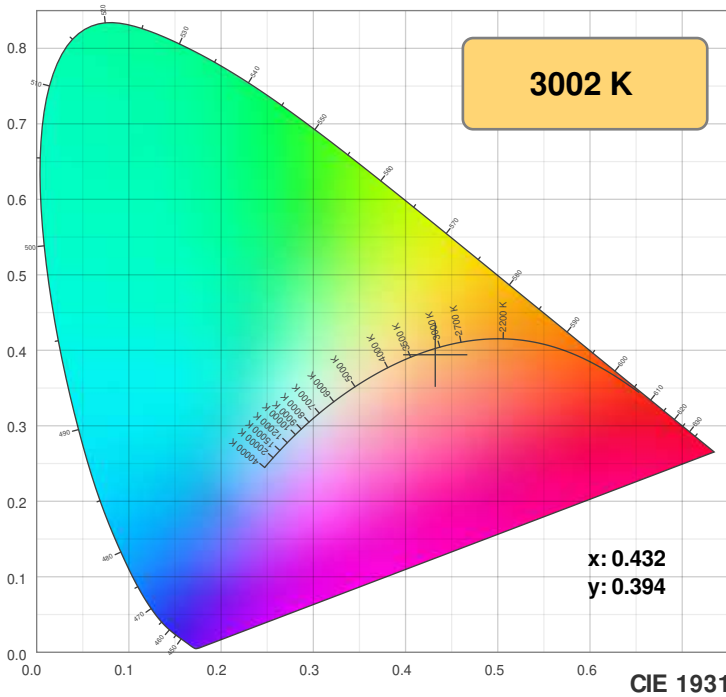


Power

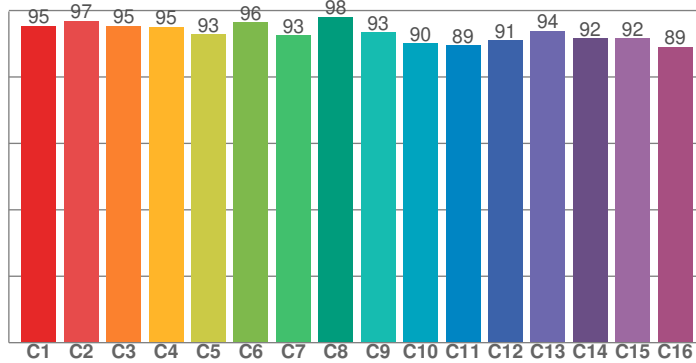


Color Details

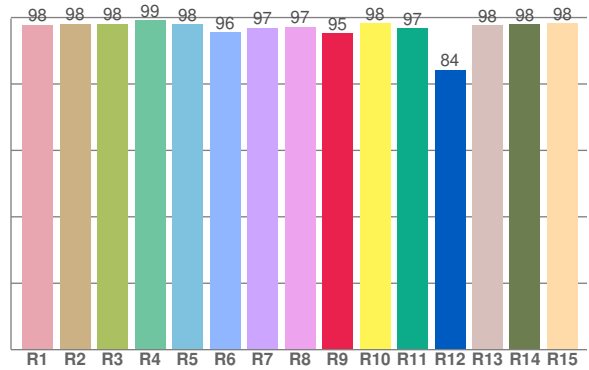
DW24-6.0_DRY_30



TM30: 93.4



CRI: 97.6 (R1-R8)



CRI R values, only R1-R8 are used to calculate final CRI value

R1	R2	R3	R4	R5	R6	R7	R8	R9	R10	R11	R12	R13	R14	R15
97.8	98.1	98.1	99.1	98.1	95.6	96.9	97.2	95.2	98.2	96.9	84.2	97.6	97.9	98.3

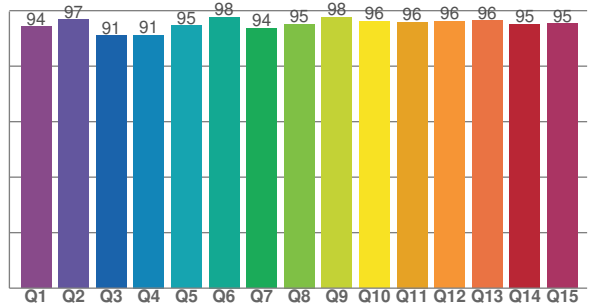
TM30 C values, 16 binned values out of total of 99 C values

C1	C2	C3	C4	C5	C6	C7	C8	C9	C10	C11	C12	C13	C14	C15	C16
95.4	96.8	95.4	95.1	92.9	96.4	92.6	98.1	93.5	90.1	89.5	91.0	93.9	91.5	91.6	89.0

CQS Q values

Q1	Q2	Q3	Q4	Q5	Q6	Q7	Q8	Q9	Q10	Q11	Q12	Q13	Q14	Q15
94.2	96.7	91.0	91.2	94.6	97.7	93.6	95.2	97.6	96.2	95.9	96.2	96.4	95.1	95.3

CQS: 94.6



Color parameters

Color temperature	Color rendering index	Red component	Color fidelity	Color gamut	Color quality scale	Color coordinate cie 1931	Color coordinate cie 1931	Color coordinate	Color coordinate	Color deviation from black body
CCT	CRI	CRI R9	TM30 Rf	TM30 Rg	CQS	x	y	u	v	Δuv
3002 K	97.6	95.2	93.4	101.4	94.6	0.432	0.394	0.252	0.344	-0.0034

TM30 Details

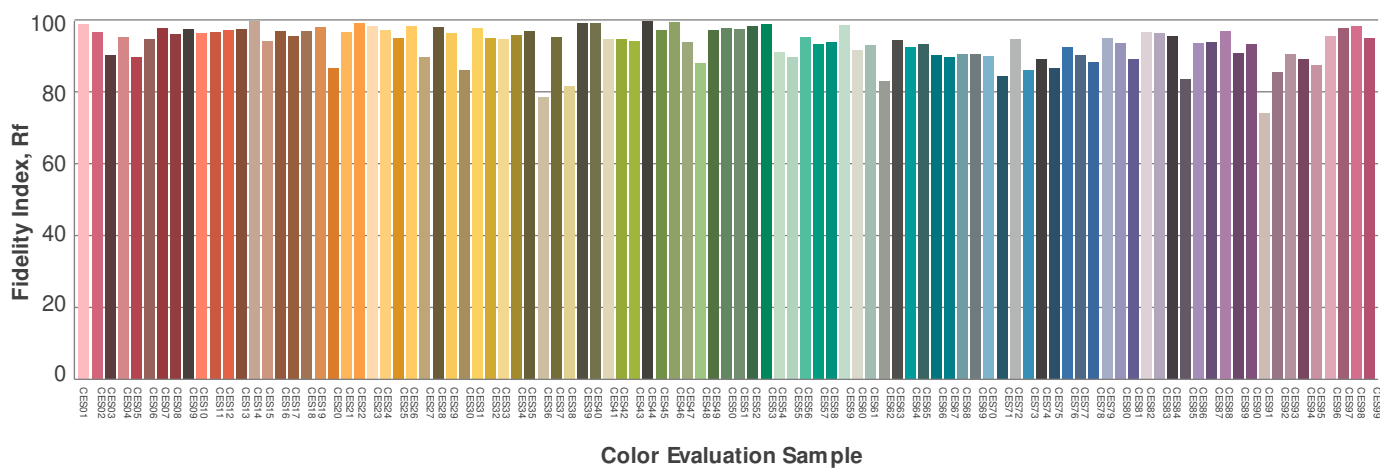
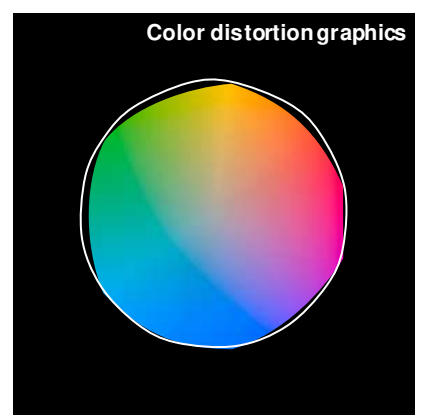
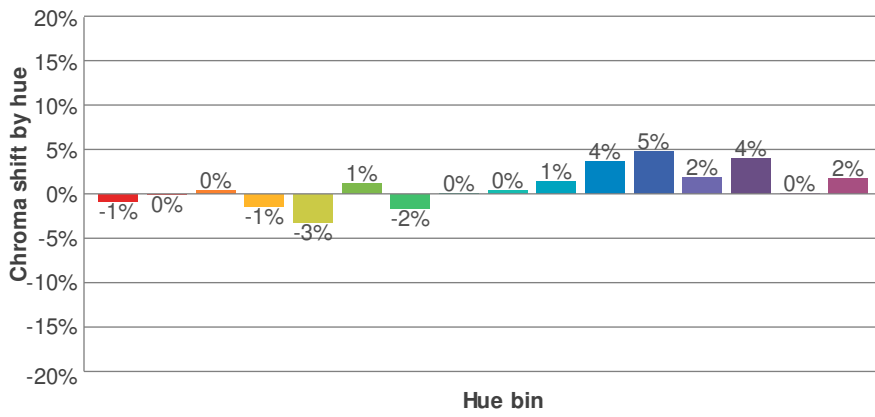
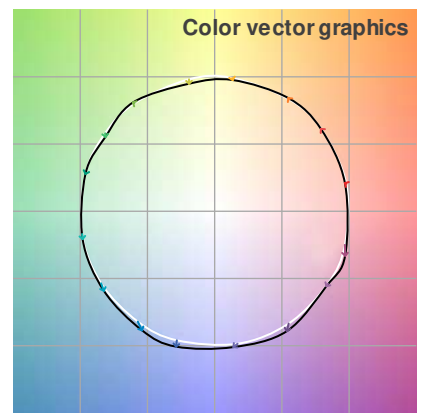
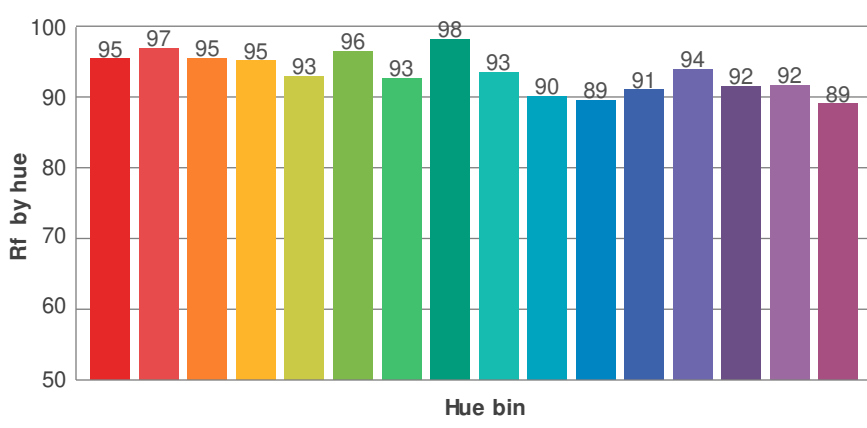
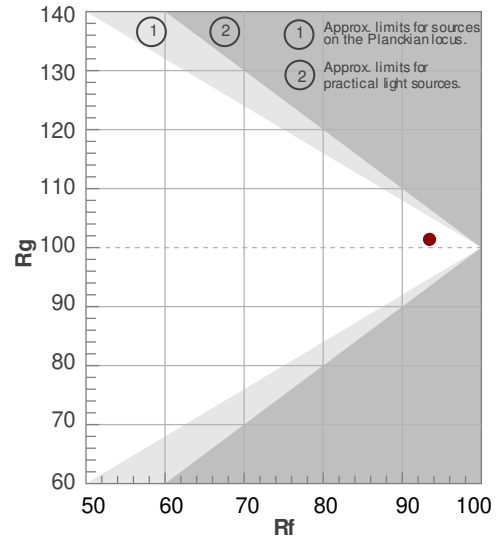
DW24-6.0_DRY_30



Rf 93.4
Fidelity index Rf

Rg 101.4
Gammut index Rg

Hue Bin	R _f	Graphic shifts (%)	
		Chroma	Hue
1	95	-1%	1%
2	97	0%	0%
3	95	0%	1%
4	95	-1%	-1%
5	93	-3%	1%
6	96	1%	1%
7	93	-2%	2%
8	98	0%	1%
9	93	0%	4%
10	90	1%	6%
11	89	4%	6%
12	91	5%	0%
13	94	2%	-3%
14	92	4%	-4%
15	92	0%	-2%
16	89	2%	-8%



Photometric Details

DW24-6.0_DRY_20-27



Product name: DW24-6.0_DRY_20-27	
Date: 1/28/2019	
Powering product: IQ-PH-80-120/24	
<hr/>	
Output:	442 lm/ft
Peak:	134 cd
Power:	5.9 W/ft
PF:	1.0



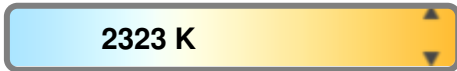
Light efficiency:



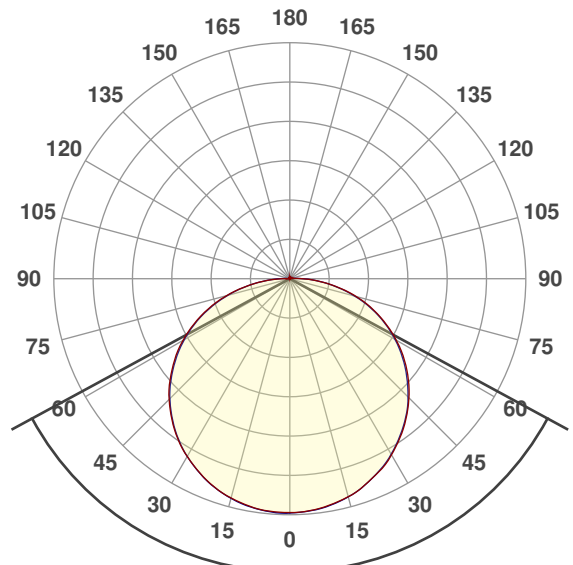
Light quality:



Color temperature:



Beam Angle

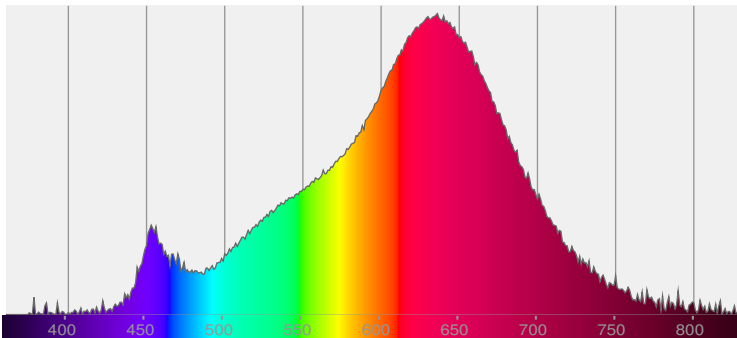


123.1°

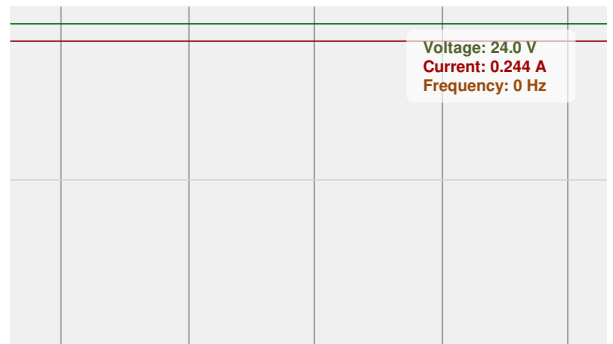


CIE 1931
x: 0.484
y: 0.400

Spectra

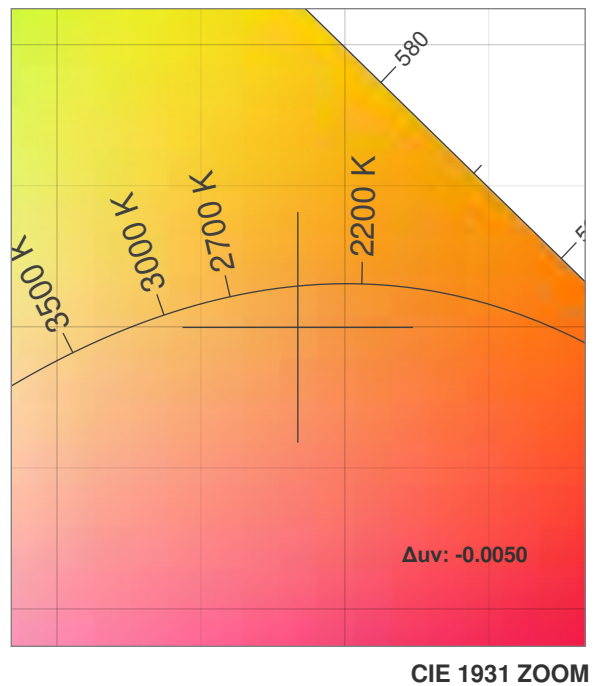
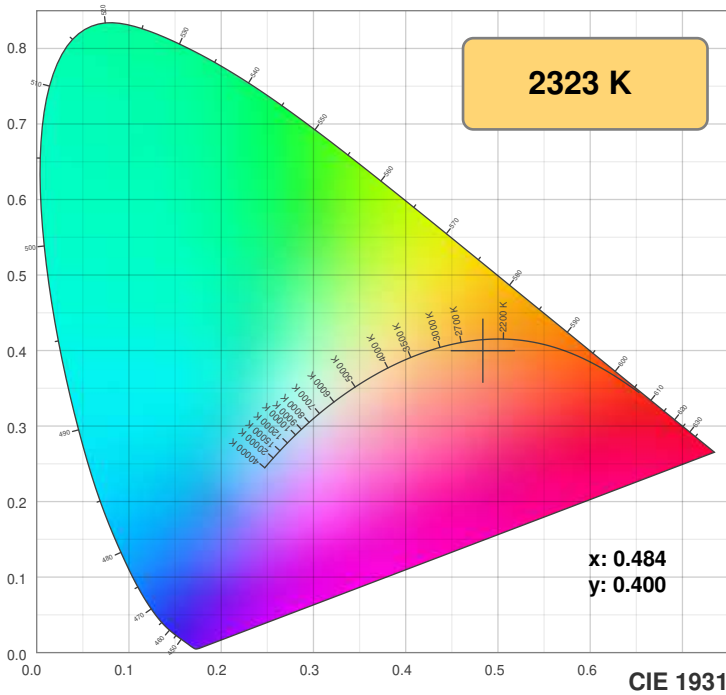


Power

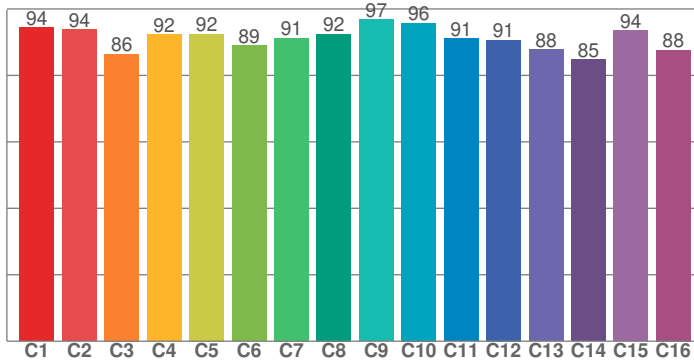


Color Details

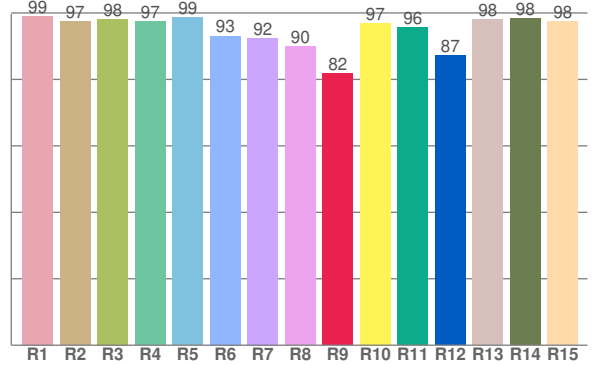
DW24-6.0_DRY_20-27



TM30: 91.8



CRI: 95.8 (R1-R8)



CRI R values, only R1-R8 are used to calculate final CRI value

R1	R2	R3	R4	R5	R6	R7	R8	R9	R10	R11	R12	R13	R14	R15
99.1	97.4	98.1	97.4	98.7	93.1	92.4	90.0	81.8	96.9	95.6	87.3	98.0	98.4	97.5

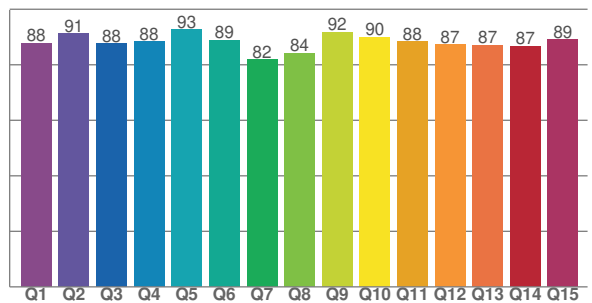
TM30 C values, 16 binned values out of total of 99 C values

C1	C2	C3	C4	C5	C6	C7	C8	C9	C10	C11	C12	C13	C14	C15	C16
94.3	93.9	86.4	92.3	92.4	89.1	91.3	92.5	96.9	95.8	91.1	90.6	87.9	84.8	93.5	87.7

CQS Q values

Q1	Q2	Q3	Q4	Q5	Q6	Q7	Q8	Q9	Q10	Q11	Q12	Q13	Q14	Q15
87.8	91.2	87.7	88.4	92.7	88.9	81.9	84.2	91.8	90.0	88.4	87.3	87.1	86.7	89.1

CQS: 87.6



Color parameters

Color temperature	Color rendering index	Red component	Color fidelity	Color gamut	Color quality scale	Color coordinate cie 1931	Color coordinate cie 1931	Color coordinate	Color coordinate	Color diviation from black body
CCT	CRI	CRI R9	TM30 Rf	TM30 Rg	CQS	x	y	u	v	Δuv
2323 K	95.8	81.8	91.8	104.9	87.6	0.484	0.400	0.283	0.351	-0.0050

TM30 Details

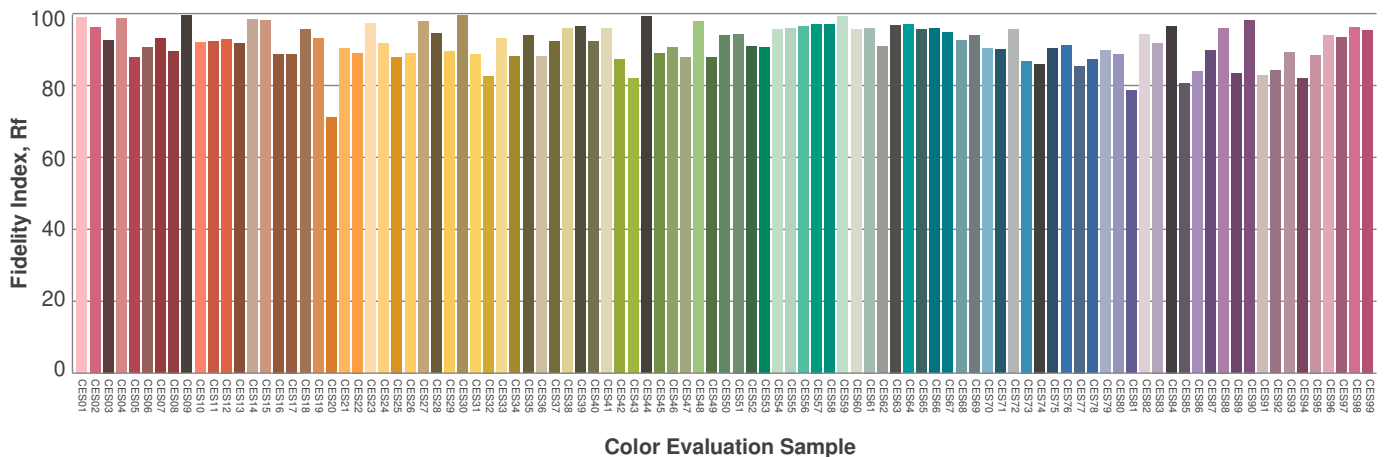
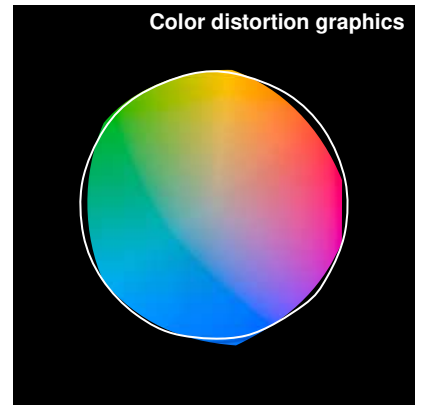
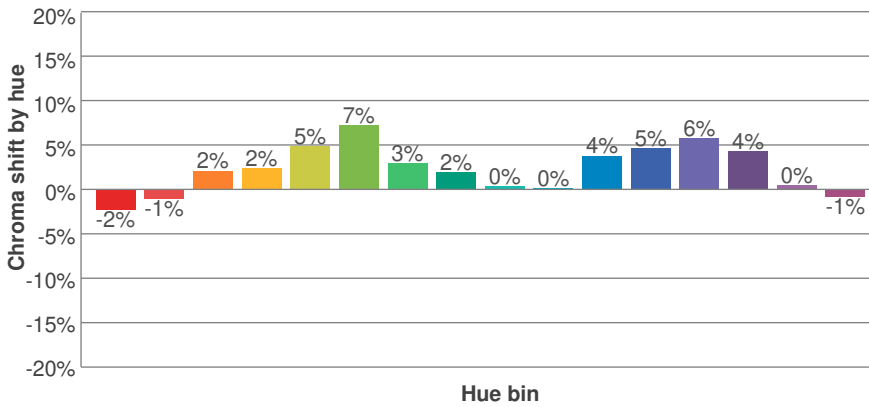
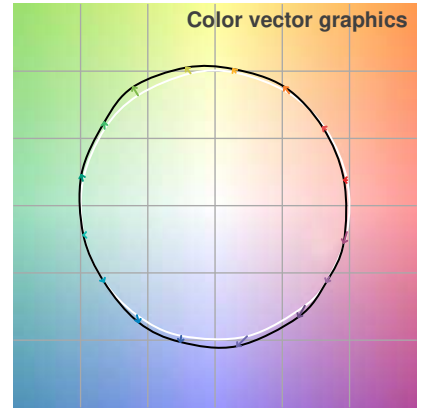
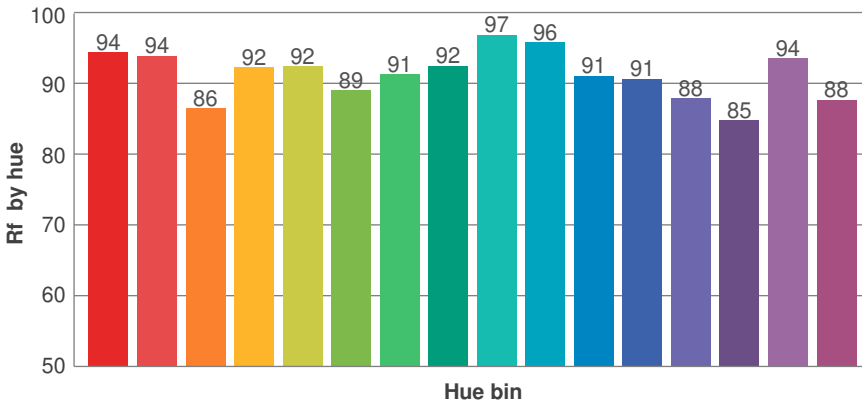
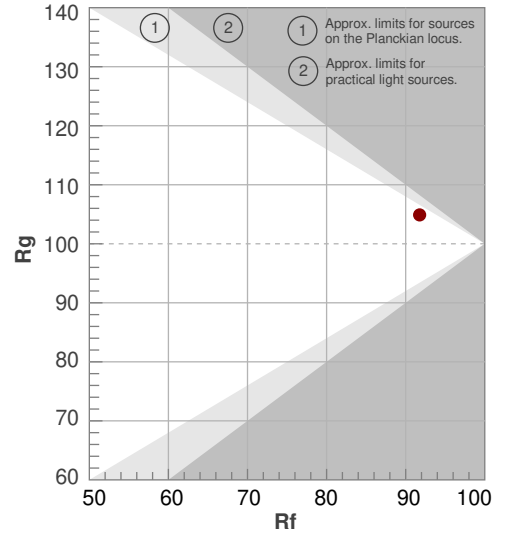
DW24-6.0_DRY_20-27



Rf 91.8
Fidelity index Rf

Rg 104.9
Gammut index Rg

Hue Bin	R _f	Graphic shifts (%)	
		Chroma	Hue
1	94	-2%	1%
2	94	-1%	3%
3	86	2%	6%
4	92	2%	2%
5	92	5%	2%
6	89	7%	0%
7	91	3%	-4%
8	92	2%	-4%
9	97	0%	0%
10	96	0%	2%
11	91	4%	4%
12	91	5%	0%
13	88	6%	-9%
14	85	4%	-9%
15	94	0%	-4%
16	88	-1%	-8%



Photometric Details

DW24-6.0_DRY_20-30



Product name:
DW24-6.0_DRY_20-30

Date:
1/14/2019

Powering product:
IQ-PH-80-120/24

Output: 472 lm/ft

Peak: 142 cd

Power: 5.9 W/ft

PF: 1.0



Light efficiency:



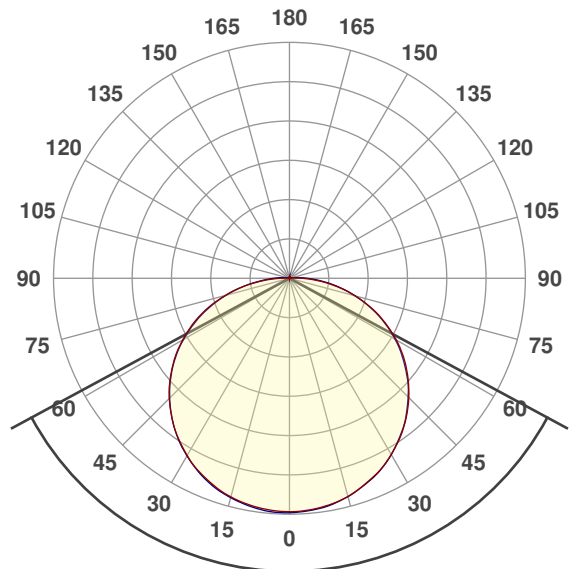
Light quality:



Color temperature:



Beam Angle

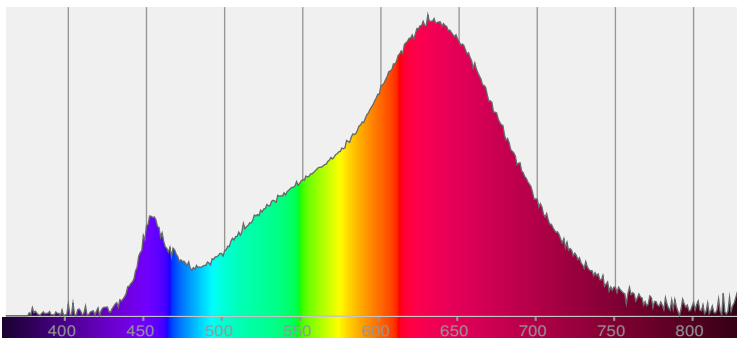


123.3°

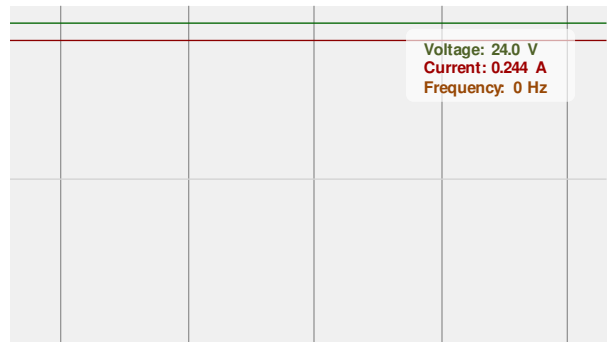


CIE 1931
x: 0.471
y: 0.398

Spectra

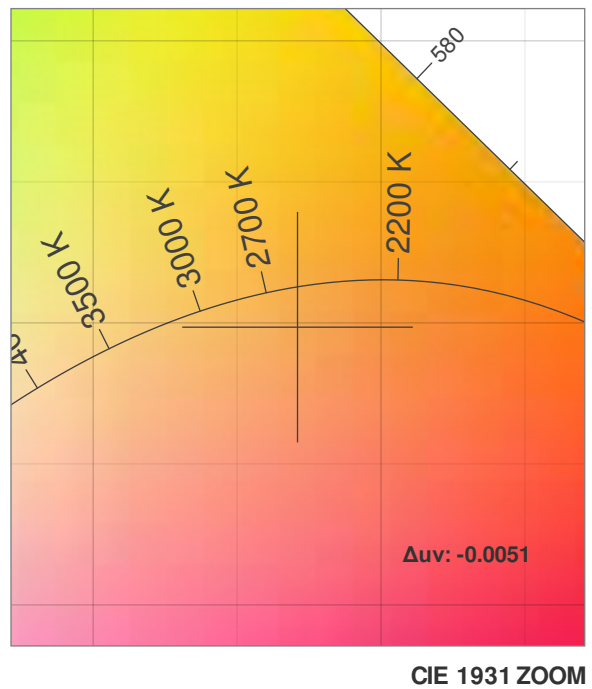
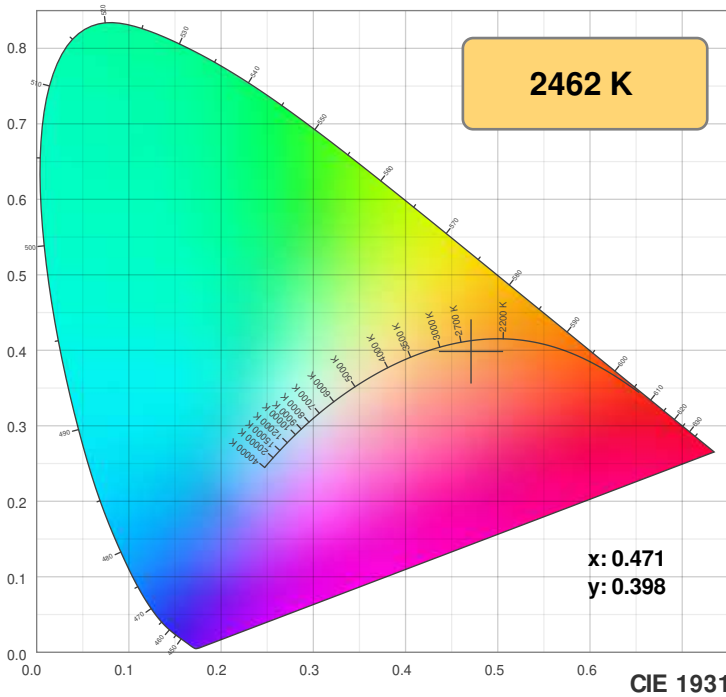


Power

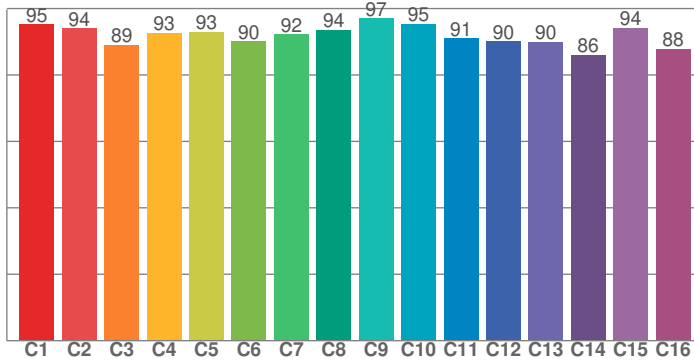


Color Details

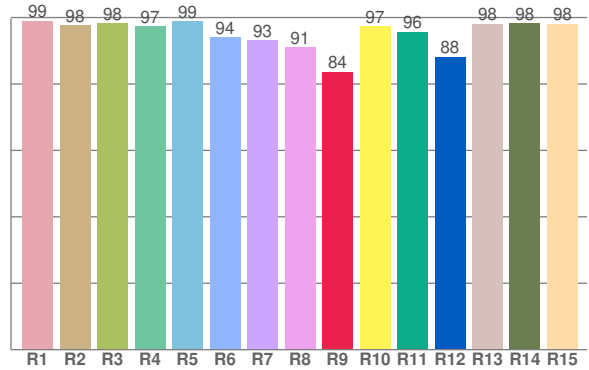
DW24-6.0_DRY_20-30



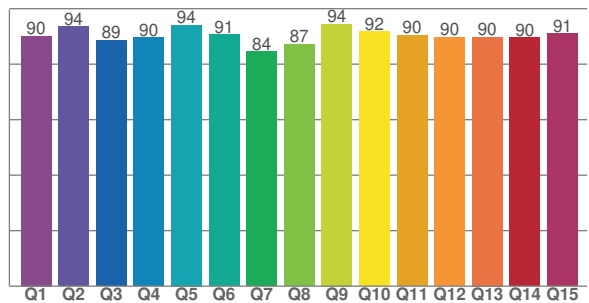
TM30: 92.3



CRI: 96.2 (R1-R8)



CQS: 89.8



CRI R values, only R1-R8 are used to calculate final CRI value

R1	R2	R3	R4	R5	R6	R7	R8	R9	R10	R11	R12	R13	R14	R15
99.0	97.7	98.2	97.4	98.9	94.0	93.2	91.1	83.7	97.4	95.7	88.2	98.1	98.2	98.1

TM30 C values, 16 binned values out of total of 99 C values

C1	C2	C3	C4	C5	C6	C7	C8	C9	C10	C11	C12	C13	C14	C15	C16
95.2	94.0	89.1	92.7	93.0	90.2	92.2	93.5	97.0	95.3	90.9	90.1	89.9	86.0	94.2	87.8

CQS Q values

Q1	Q2	Q3	Q4	Q5	Q6	Q7	Q8	Q9	Q10	Q11	Q12	Q13	Q14	Q15
90.2	93.5	88.6	89.6	94.1	90.7	84.5	87.2	94.4	91.7	90.4	89.7	89.8	89.6	91.1

Color parameters

Color temperature	Color rendering index	Red component	Color fidelity	Color gamut	Color quality scale	Color coordinate cie 1931	Color coordinate cie 1931	Color coordinate	Color coordinate	Color deviation from black body
CCT	CRI	CRI R9	TM30 Rf	TM30 Rg	CQS	x	y	u	v	Δuv
2462 K	96.2	83.7	92.3	104.3	89.8	0.471	0.398	0.275	0.350	-0.0051

TM30 Details

DW24-6.0_DRY_20-30



Rf 92.3
Fidelity index Rf

Rg 104.3
Gammut index Rg

Hue Bin	R _f	Graphic shifts (%)	
		Chroma	Hue
1	95	-2%	0%
2	94	-1%	3%
3	89	2%	5%
4	93	2%	2%
5	93	4%	2%
6	90	6%	0%
7	92	3%	-3%
8	94	2%	-4%
9	97	0%	0%
10	95	0%	2%
11	91	3%	5%
12	90	5%	-1%
13	90	4%	-6%
14	86	4%	-8%
15	94	1%	-4%
16	88	0%	-8%

