

# Q-MINI-J

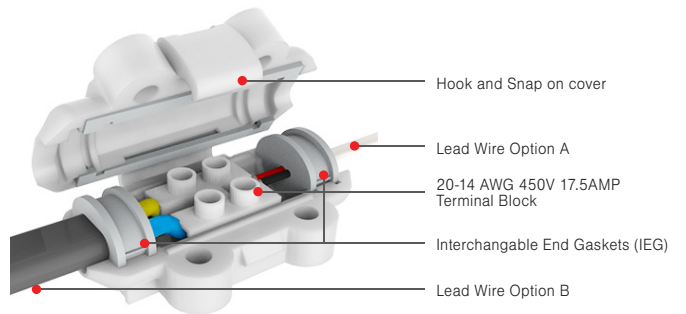
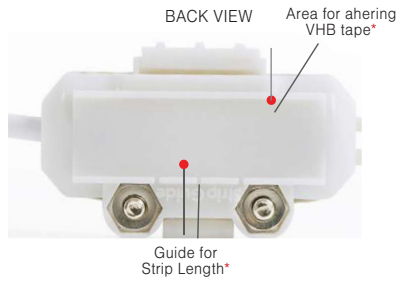
## ACCESSORIES - STRIPS/FIXTURES



PRODUCT	OPTIONS	QUANTITY
Q-MJ	<p>STD</p> <p>No Silicone</p> <p>S</p> <p>Silicone Package</p>	

### FEATURES

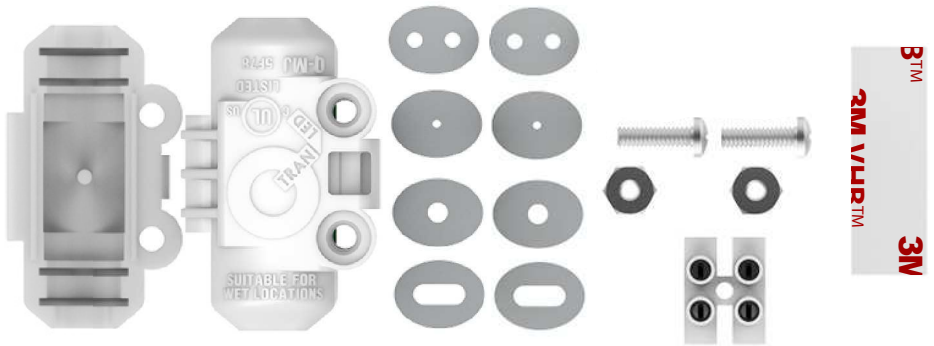
- Water resistant junction box allows for splicing Q-Tran LED lead wires
- Used to splice two wires for a continuous run to power supply
- Can be mounted with VHB tape or standard mounting hardware
- Indoor/Outdoor Use
- UL Listed



\*For more information, refer to Installation Guide

### SUPPLIED PARTS IN EACH PACK

- Terminal Block (1x)
- #6-32 x 1/2" Pan Head Screw (2x)
- #6-32 hew nut (2x)
- 1 1/2" x 1/2" 3M VHB Tape (1x)
- 8-Interchangeable End Gaskets (IEG)



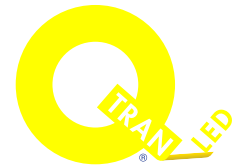
- NOTES:**
- The splice box is intended for use only with Class 2 power
  - Suitable for use with 22-14 AWG copper conductors or equivalent
  - Q-MJ rated max 30VDC or 15VAC, max 5A



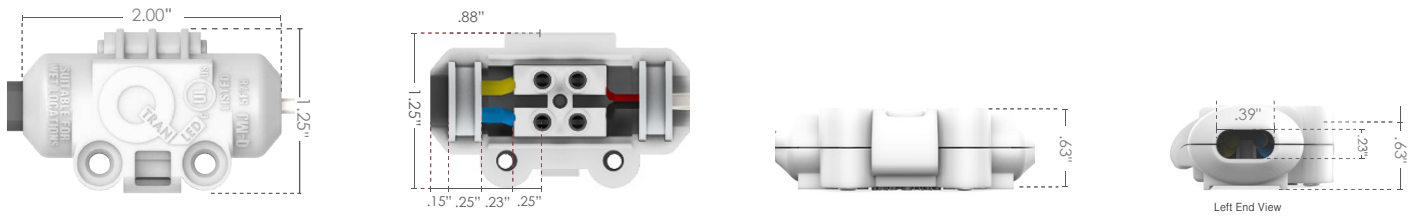
PROJECT NAME	DATE	COMPANY	TYPE	NOTE

# Q-MINI-J

## ACCESSORIES - STRIPS/FIXTURES

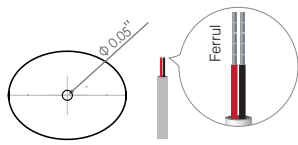


### DIMENSIONS (in)



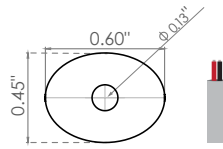
### WIRE & GASKET OPTIONS

2 each supplied for Q-Tran wires

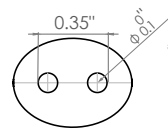


Q-Tran 22AWG Wire

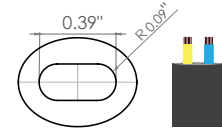
\*Crimp wire with ferrul before installation



Q-Tran 20AWG Wire



Q-Tran 18AWG Wire



Q-Tran 14/2AWG Wire

### CUSTOM WIRE USE

Fill each half of the Q-mini-J housing with silicone after wiring and let it set to provide a watertight seal (silicone optional).\*

**NOTE:** Do not use Interchangeable End Gaskets (IEG) provided.

### INSTALLATION OPTIONS

#### Free Float

Indoor



#### 3M VHB (Included)

Indoor/Outdoor



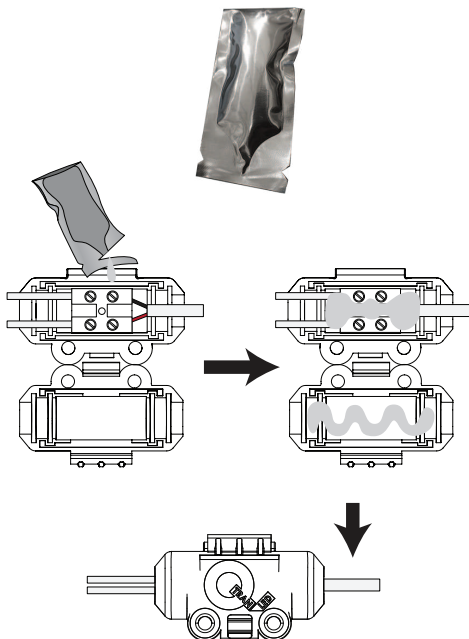
#### Wood Screw (Not Included)

Indoor/Outdoor



\*For more information, refer to Installation Guide

### SILICONE PACKAGE



NOTE: Once closed with the silicone in place, the Q-mini-J cannot be re-used.

- NOTES:**
- The splice box is intended for use only with Class 2 power
  - Suitable for use with 22-14 AWG copper conductors or equivalent
  - Q-MJ rated max 30VDC or 15VAC, max 5A

