

# RESOURCE GUIDE

## EXTRUSIONS - CORNER - ARKA

Model: iQA



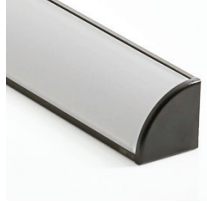
### FINISH

#### SATIN



SATIN ANODIZED  
MATTE FINISH  
GREY ENDCAPS

#### BLACK



BLACK ANODIZED  
MATTE FINISH  
BLACK ENDCAPS

#### BRONZE



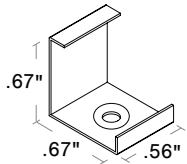
BRONZE ANODIZED  
MATTE FINISH  
BRONZE ENDCAPS

### MOUNTING TYPE - CORNER



### MOUNTING - HARDWARE

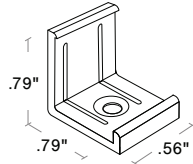
#### Stainless Steel Clip (SST)



2 clips provided for 4' or less;  
4 clips provided for greater than 4'

- Stainless Steel
- Indoor/Outdoor
- #4 x 5/8" Flat Head SS (1 per clip included)

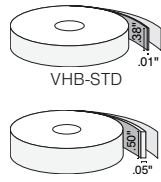
#### Plastic Clip (PL)



2 clips provided for 4' or less;  
4 clips provided for greater than 4'

- Plastic
- Indoor/Outdoor
- #4 x 5/8" Flat Head SS (1 per clip included)

#### VHB-STD & VHB-CON (see Accessory cutsheet)



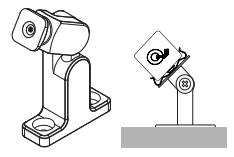
- Double sided strong adhesive tape
- VHB-STD is for Indoor use
- VHB-CON bonds to concrete

#### 832 (see Accessory cutsheet)



- Strong adhesive
- Not submersible, For dry and wet locations only

#### Q-ANGLE & PIVOT BRACKET (see Accessory cutsheet)



Q-ANGLE PIVOT

- Adjustable mounting bracket
- Q-Angle: Indoor/Outdoor
- Pivot Bracket: Indoor

### LENS

CL Clear

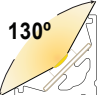
FR Frosted

PR Polar

DF Diffused



### CUT OFF



Clear 130°

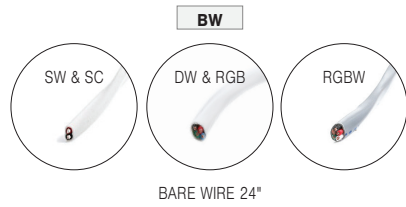
# RESOURCE GUIDE

## EXTRUSIONS - CORNER - ARKA

Model: iQA



### CONNECTORS/WIRE



### STATIC WHITE AND STATIC COLOR ONLY



### LIGHT ORIENTATION



**TYPE** To order a bare extrusion without a strip installed in Q-Tran factory, choose **NI** (Not Installed) for your Type option

