

# RESOURCE GUIDE

## EXTRUSIONS - SURFACE - LALO

Model: iQA



### FINISH

**SATIN**



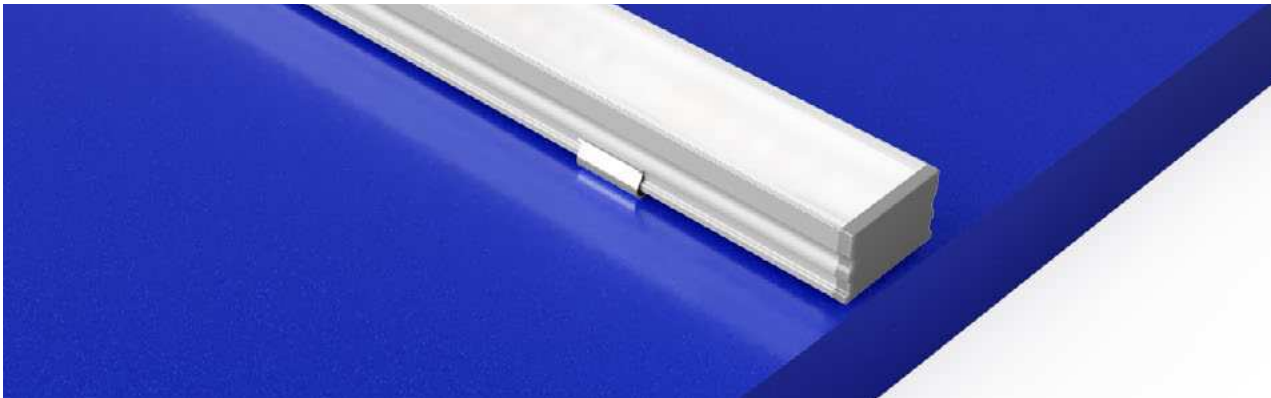
SATIN ANODIZED  
MATTE FINISH  
GREY ENDCAPS

**BLACK**



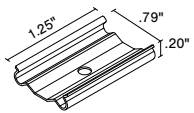
BLACK ANODIZED  
MATTE FINISH  
BLACK ENDCAPS

### MOUNTING TYPE - SURFACE



### MOUNTING - HARDWARE

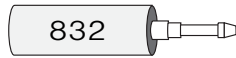
**Stainless Steel**  
(LALO-SST)



2 clips provided for 4' or less;  
4 clips provided for greater than 4'

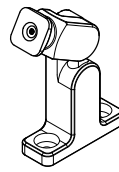
- Stainless Steel
- Indoor/Outdoor
- #4 x 5/8" Flat Head SS (1 per clip included)

**832**  
(see Accessory cutsheet)



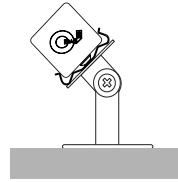
- Strong adhesive
- Not submersible, For dry and wet locations only

**Q-ANGLE**  
(see Accessory cutsheet)



- Adjustable mounting bracket
- Indoor/Outdoor

**PIVOT BRACKET**  
(see Accessory cutsheet)



- Adjustable mounting bracket
- Indoor

### LENS

**CL** Clear

**FR** Frosted

**PR** Polar

**DF** Diffused



**ENC/CL** Encapsulated in Clear

**ENC/TL** Encapsulated in Translucent

# RESOURCE GUIDE

## EXTRUSIONS - SURFACE - LALO

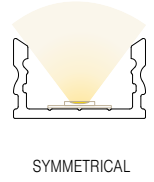
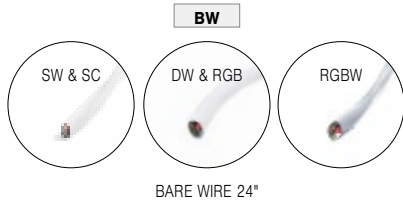
Model: iQA



### CONNECTORS/WIRE

STATIC WHITE AND STATIC COLOR ONLY

### LIGHT ORIENTATION



**TYPE** To order a bare extrusion without a strip installed in Q-Tran factory, choose **NI** (Not Installed) for your Type option

