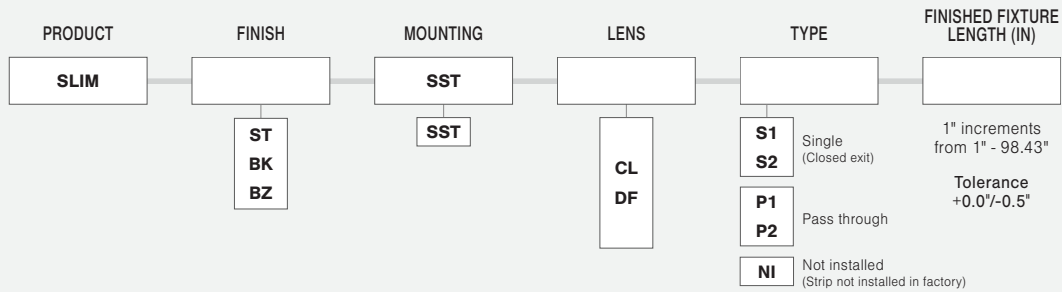




SLIM EXTRUSIONS - ALUMINUM

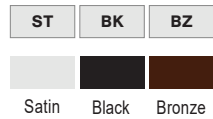
Model: iQA



WET RATED TAPE ONLY COMPATIBLE WITH NO LENS

- NOTES:**
- UL Listed when assembled with STRIP LEDs at Q-Tran
 - NRTL Listed for install in Storage Areas with Clothing, NEC Field 410.2 and 410.16 when assembled as a fixture, with 4.0 w/ft or less, at Q-Tran facility (Not applicable for encapsulation)
 - Field modifications must comply with Q-Tran's installation methods otherwise warranty is null and void

FINISH

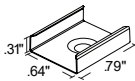


MOUNTING

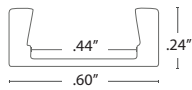
NOTE: 2 clips provided for 4' or less;
4 clips provided for greater than 4'



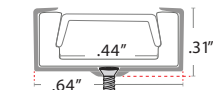
Stainless Steel



DIMENSIONS

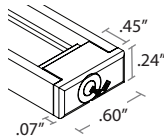


Profile



Profile with
Stainless Steel Mounting Clip

END CAPS



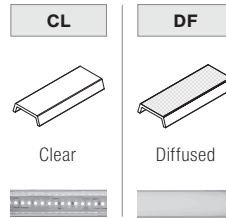
CUT OFF



Clear 98°

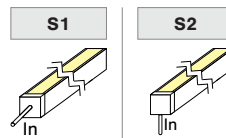
LENS

with LED visibility

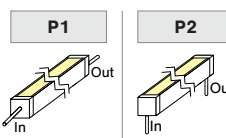


TYPE

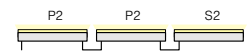
SINGLE (Input only)



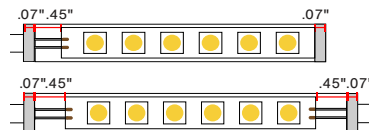
PASS THROUGH (Input/Output)



ORDER EXAMPLE



LENGTH (IN) : Add to nominal LED length for fixture length



$$\begin{aligned} &\text{Endcap\#1} \\ &\text{Endcap\#2} \\ &\text{Space to solder wire} \\ \text{S1 } &.07'' + .07'' + .45'' = .59'' \\ \text{P1 } &.07'' + .07'' + 2(.45'') = 1.04'' \end{aligned}$$

COMPATIBLE LEDs

STATIC WHITE (SW)				DYNAMIC WHITE (DW)				STATIC COLOR (SC)				RGB				RGBW			
DRY	DMP	WET	ENC	DRY	DMP	WET	ENC	DRY	DMP	WET	ENC	DRY	DMP	WET	ENC	DRY	DMP	WET	ENC
✓	✓	✓	✗	✓	✓	✗	✗	✓	✓	✓	✗	✓	✗	✗	✗	✗	✗	✗	✗
✓ = Compatible				✓ = NOT Compatible with 6.0 & 7.5 strips															
✗ = NOT Compatible				✓ = Wet rated but with no lens															

PROJECT NAME	DATE	COMPANY	TYPE	NOTE

RESOURCE GUIDE

EXTRUSIONS - SURFACE - SLIM

Model: iQA



FINISH

SATIN



SATIN ANODIZED
MATTE FINISH
METALLIC ENDCAPS

BLACK



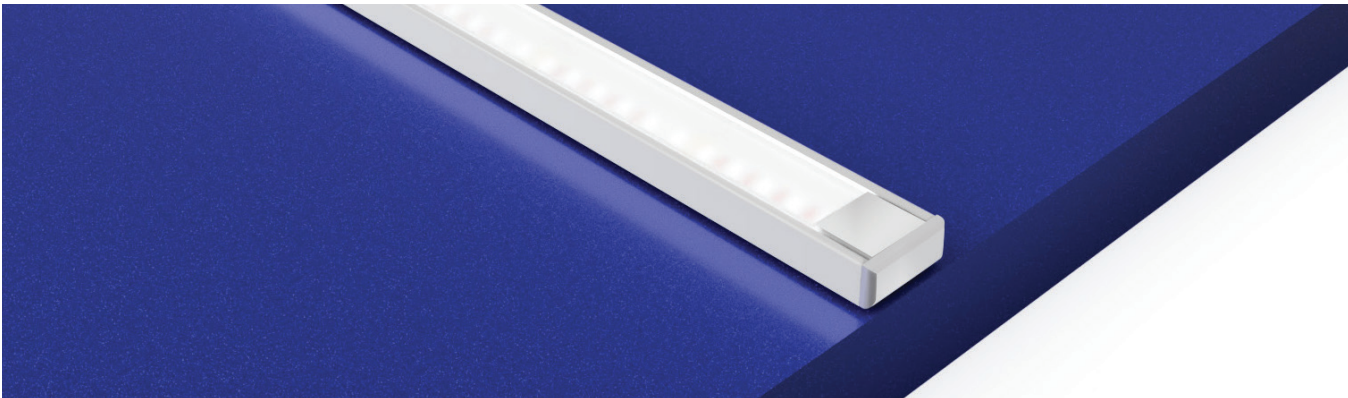
BLACK ANODIZED
MATTE FINISH
BLACK ENDCAPS

BRONZE



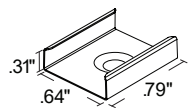
BRONZE ANODIZED
MATTE FINISH
BRONZE ENDCAPS

MOUNTING TYPE - SURFACE



MOUNTING - HARDWARE

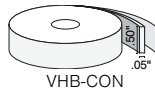
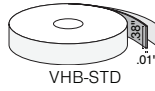
Stainless Steel Clip (SST)



2 clips provided for 4' or less;
4 clips provided for greater than 4'

- Stainless Steel
- Indoor/Outdoor
- #4 x 5/8" Flat Head SS (1 per clip included)

VHB-STD & VHB-CON (see Accessory cutsheet)



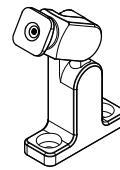
- Double sided strong adhesive tape
- VHB-STD is for Indoor use
- VHB-CON bonds to concrete

832 (see Accessory cutsheet)



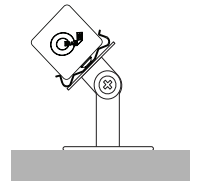
- Strong adhesive
- Not submersible, For dry and wet locations only

Q-ANGLE (see Accessory cutsheet)



- Adjustable mounting bracket
- Indoor/Outdoor

PIVOT BRACKET (see Accessory cutsheet)



- Adjustable mounting bracket
- Indoor

LENS

CL Clear

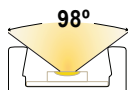
FR Frosted

PR Polar

DF Diffused



CUT OFF



Clear 98°

RESOURCE GUIDE

EXTRUSIONS - SURFACE - SLIM

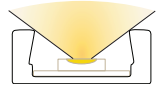
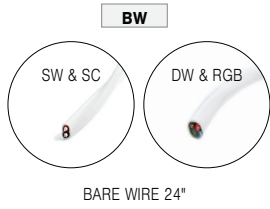
Model: iQA



CONNECTORS/WIRE

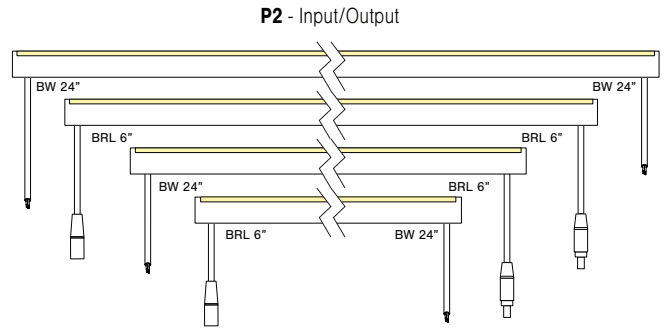
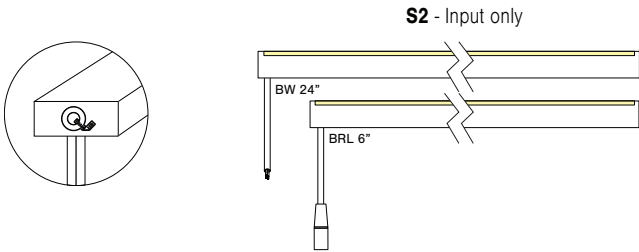
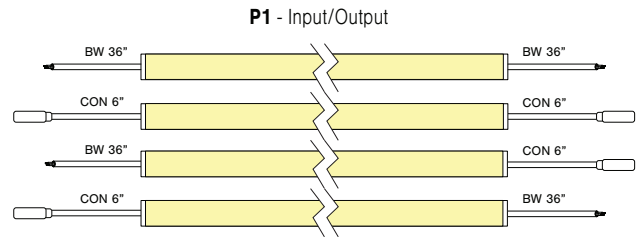
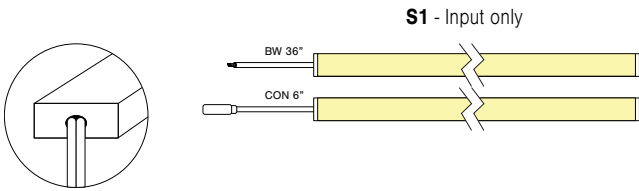
STATIC WHITE AND STATIC COLOR ONLY

LIGHT ORIENTATION



SYMMETRICAL

TYPE To order a bare extrusion without a strip installed in Q-Tran factory, choose **NI** (Not Installed) for your Type option



RESOURCE GUIDE - COMPATIBILITY

EXTRUSIONS & STRIPS



STRIP AND EXTRUSION COMPATIBILITY

EXTRUSIONS	STATIC WHITE 1.5 - 7.5 W/ft				DYNAMIC WHITE 6.0 W/ft				STATIC COLOR 5.0 W/ft				RGB 5.3 W/ft				RGBW 6.0 W/ft				
	DRY	DMP	WET	ENC	DRY	DMP	WET	ENC	DRY	DMP	WET	ENC	DRY	DMP	WET	ENC	DRY	DMP	WET	ENC	
SLIM	◆	◆	◇	✗	✓	✓	✗	✗	✓	✓	◇	✗	✓	✗	✗	✗	✗	✗	✗	✗	✗
WIDE	✓	◆	◆	✗	✓	✓	✓	✗	✓	✓	✓	✗	✓	✗	✓	✗	✓	✓	✓	✗	
ROND	✓	◆	✗	✗	✓	✓	✗	✗	✓	✓	✗	✗	✓	✗	✗	✗	✗	✗	✗	✗	
VEGA	✓	◆	✗	✗	✓	✓	✗	✗	✓	✓	✗	✗	✓	✗	✗	✗	✗	✗	✗	✗	
TORQ	✓	◆	◆	◆	✓	✓	✗	✓	✓	✓	✓	✓	✓	✗	✗	✓	✗	✗	✗	✗	
TRE3	✓	◆	◆	✗	✓	✓	✗	✗	✓	✓	✓	✗	✓	✗	✗	✗	✓	✓	✗	✗	
ARKA	✓	◆	◆	✗	✓	✓	✓	✗	✓	✓	✓	✗	✓	✗	✓	✗	✓	✓	✗	✗	
TELA	✓	◆	◆	✗	✓	✓	✓	✗	✓	✓	✓	✗	✓	✗	✓	✗	✓	✓	✗	✗	
VEVE	✓	◆	◆	✗	✓	✓	✗	✗	✓	✓	✓	✗	✓	✗	✗	✗	✓	✓	✗	✗	
FLUR	✓	◆	◆	◆	✓	✓	✗	✓	✓	✓	✓	✓	✓	✗	✗	✓	✗	✗	✗	✗	
LATO	✓	◆	◆	◆	✓	✓	✗	✓	✓	✓	✓	✓	✓	✗	✗	✓	✗	✗	✗	✗	
LALO	✓	◆	◆	◆	✓	✓	✓	✓	✓	✓	✓	✓	✓	✗	✓	✓	✓	✓	✗	✓	
TALO	✓	◆	◆	◆	✓	✓	✓	✓	✓	✓	✓	✓	✓	✗	✓	✓	✓	✓	✗	✓	
MDIN	◆	◆	✗	✗	✗	✗	✗	✗	✗	✗	✗	✗	✗	✗	✗	✗	✗	✗	✗	✗	

- ◆ = NOT Compatible with 6.0 & 7.5 strips
- ◇ = Wet rated but with no lens
- ✓ = Compatible
- ✗ = NOT Compatible

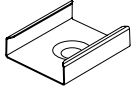
MOUNTING INSTALLATION

EXTRUSIONS - SURFACE - SLIM

Model: iQA

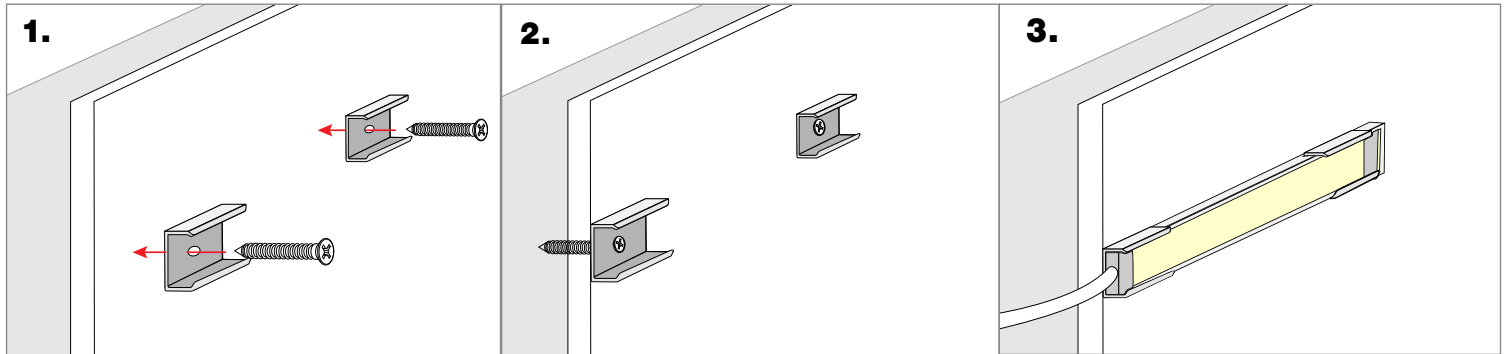


MOUNTING NOTE: 2 clips provided for 4' or less;
4 clips provided for greater than 4'

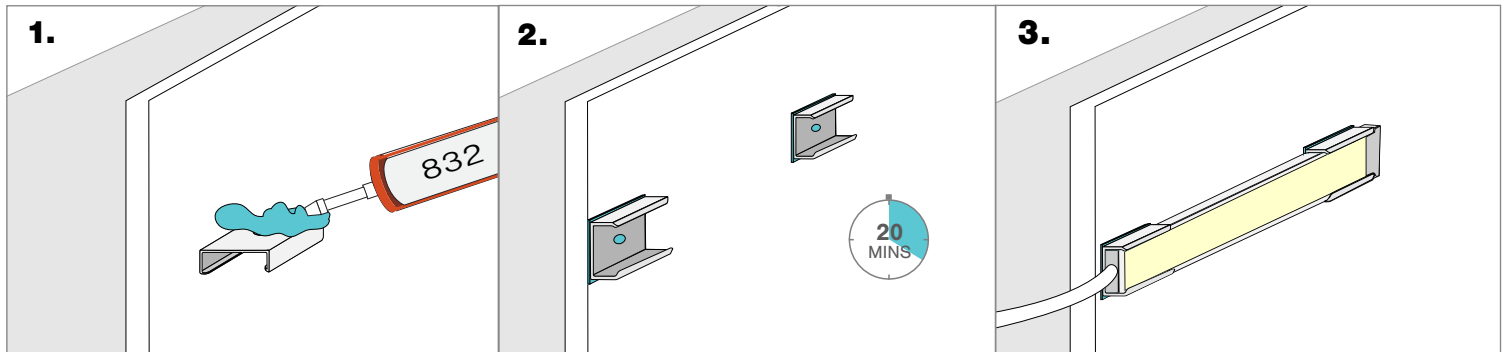


SLIM-SST

Screw Mounting

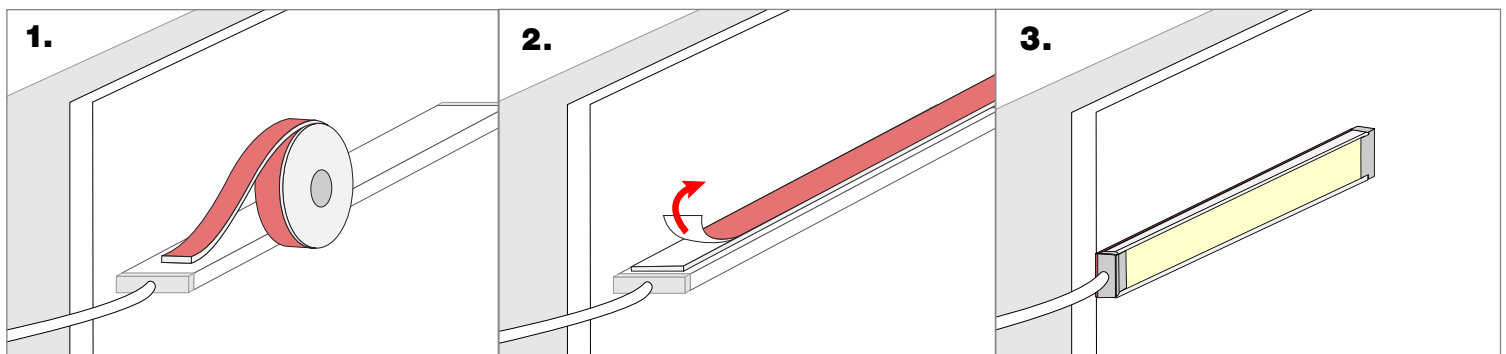


832 Silicone Mounting



NOTE: 832 Silicone use in a well-ventilated area, 832 Silicone sold with Caulking gun. Do not use in any submersible applications.

VHB Mounting



NOTES: • Field modifications must comply with Q-Tran's installation methods otherwise warranty is null and void