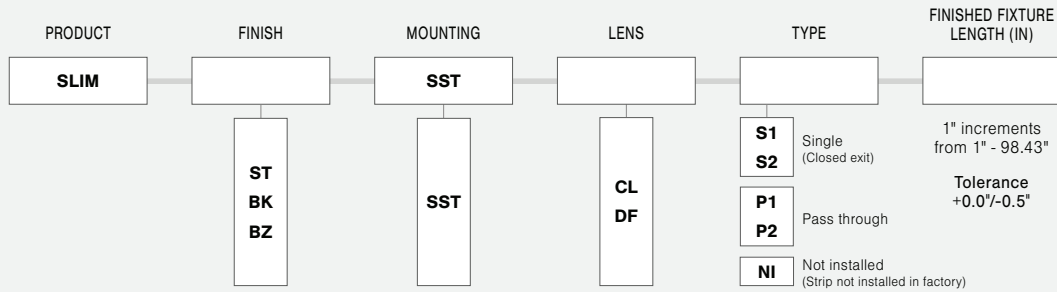


# SLIM EXTRUSIONS - ALUMINUM

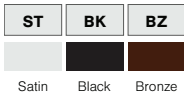
Model: iQA



WET RATED TAPE ONLY COMPATIBLE WITH NO LENS

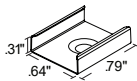
- NOTES:**
- UL Listed when assembled with STRIP LEDs at Q-Tran
  - NRTL Listed for install in Storage Areas with Clothing, NEC Field 410.2 and 410.16 when assembled as a fixture, with 4.0 w/ft or less, at Q-Tran facility (Not applicable for encapsulation)
  - Field modifications must comply with Q-Tran's installation methods otherwise warranty is null and void

## FINISH



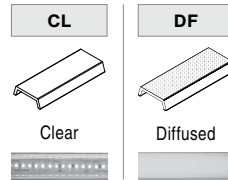
## MOUNTING

NOTE: 2 clips provided for 4' or less;  
4 clips provided for greater than 4'

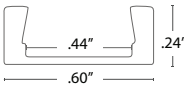


Black clip standard with black extrusion

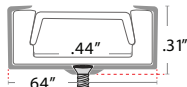
## LENS with LED visibility



## DIMENSIONS



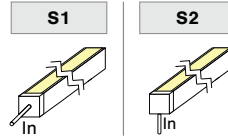
Profile



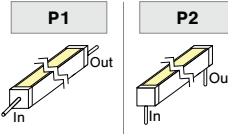
Profile with  
Stainless Steel Mounting Clip

## TYPE

### SINGLE (Input only)



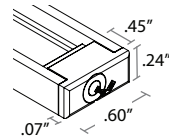
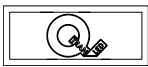
### PASS THROUGH (Input/Output)



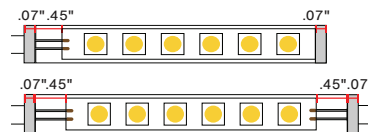
## ORDER EXAMPLE



## END CAPS



## LENGTH (IN) : Add to nominal LED length for fixture length



$$\begin{aligned} &\text{Endcap\#1} && \text{Endcap\#2} && \text{Space to solder wire} \\ &| && | && | \\ \text{S1 } & .07" + .07" + .45" = .59" \\ \text{P1 } & .07" + .07" + 2(.45") = 1.04" \end{aligned}$$

## CUT OFF



Clear 98°

## COMPATIBLE LEDs

STATIC WHITE (SW)				DYNAMIC WHITE (DW)				STATIC COLOR (SC)				RGB				RGBW			
DRY	DMP	WET	ENC	DRY	DMP	WET	ENC	DRY	DMP	WET	ENC	DRY	DMP	WET	ENC	DRY	DMP	WET	ENC
✓	✓	✓	✗	✓	✓	✗	✗	✓	✓	✓	✗	✓	✓	✗	✗	✗	✗	✗	✗
✓ = Compatible				✗ = NOT Compatible				◆ = NOT Compatible with 6.0 & 7.5 strips				◇ = Wet rated but with no lens							

PROJECT NAME	DATE	COMPANY	TYPE	NOTE

# RESOURCE GUIDE

## EXTRUSIONS - SURFACE - SLIM

Model: iQA



### FINISH

#### SATIN



SATIN ANODIZED  
MATTE FINISH  
METALLIC ENDCAPS

#### BLACK



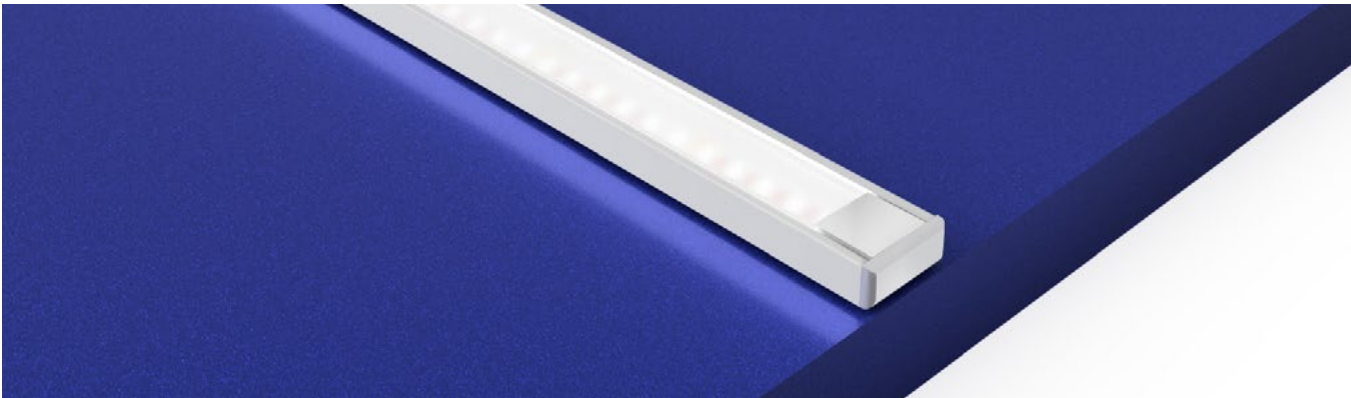
BLACK ANODIZED  
MATTE FINISH  
BLACK ENDCAPS

#### BRONZE



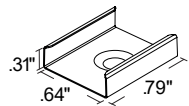
BRONZE ANODIZED  
MATTE FINISH  
BRONZE ENDCAPS

### MOUNTING TYPE - SURFACE



### MOUNTING - HARDWARE

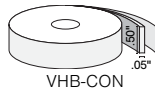
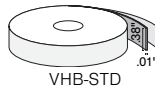
#### Stainless Steel Clip (SST)



2 clips provided for 4' or less;  
4 clips provided for greater than 4'

- Stainless Steel
- Indoor/Outdoor
- #4 x 5/8" Flat Head SS (1 per clip included)

#### VHB-STD & VHB-CON (see Accessory cutsheet)



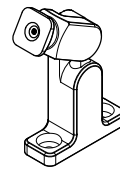
- Double sided strong adhesive tape
- VHB-STD is for Indoor use
- VHB-CON bonds to concrete

#### 832 (see Accessory cutsheet)



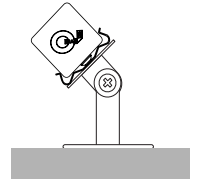
- Strong adhesive
- Not submersible, For dry and wet locations only

#### Q-ANGLE (see Accessory cutsheet)



- Adjustable mounting bracket
- Indoor/Outdoor

#### PIVOT BRACKET (see Accessory cutsheet)



- Adjustable mounting bracket
- Indoor

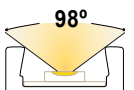
### LENS

CL Clear

DF Diffused



### CUT OFF



Clear 98°

# RESOURCE GUIDE

## EXTRUSIONS - SURFACE - SLIM

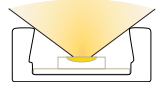
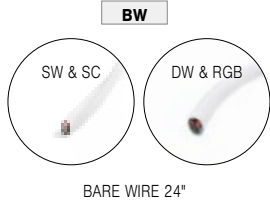
Model: iQA



### CONNECTORS/WIRE

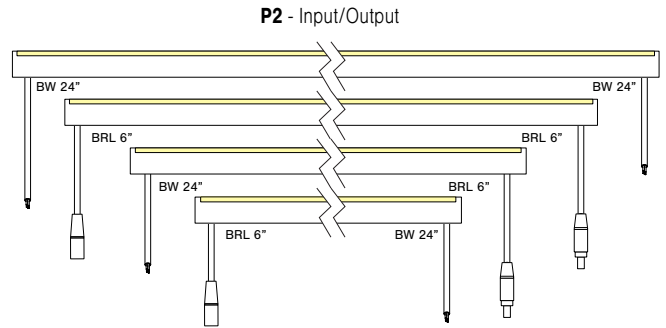
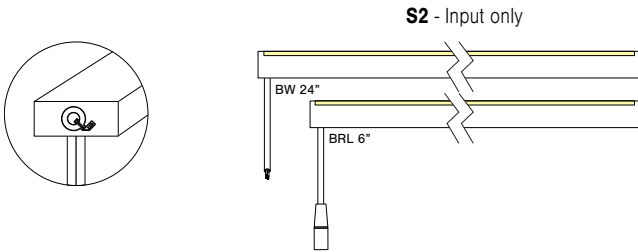
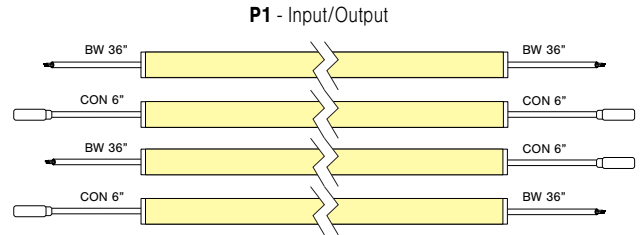
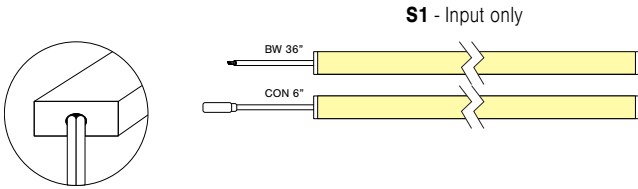
STATIC WHITE AND STATIC COLOR ONLY

### LIGHT ORIENTATION



SYMMETRICAL

**TYPE** To order a bare extrusion without a strip installed in Q-Tran factory, choose **NI** (Not Installed) for your Type option



# RESOURCE GUIDE - COMPATIBILITY

## STRIP & EXTRUSION



EXTRUSIONS	STATIC WHITE				DYNAMIC WHITE				STATIC COLOR				RGB				RGBW				
	1.5 - 7.5 W/ft				IA5.0W/ft	6.0 W/ft				5.0 W/ft				6.0 W/ft				6.0 W/ft			
	DRY	DMP	WET	ENC	DRY	DRY	DMP	WET	ENC	DRY	DMP	WET	ENC	DRY	DMP	WET	ENC	DRY	DMP	WET	ENC
SLIM	✓	◆	◇	✗	✓	✓	✓	✗	✗	✓	✓	◇	✗	✓	✓	✗	✗	✗	✗	✗	✗
WIDE	✓	◆	◇	✗	✓	✓	✓	✓	✗	✓	✓	✓	✗	✓	✓	✓	✗	✓	✓	✓	✗
ROND	✓	◆	✗	✗	✓	✓	✓	✗	✗	✓	✓	✗	✗	✓	✓	✗	✗	✗	✗	✗	✗
VEGA	✓	◆	✗	✗	✓	✓	✓	✗	✗	✓	✓	✗	✗	✓	✓	✗	✗	✗	✗	✗	✗
TORQ	✓	◆	◇	◇	✓	✓	✓	✗	✗	✓	✓	✓	✓	✓	✓	✗	✓	✗	✗	✗	✗
TRE3	✓	◆	◇	✗	✓	✓	✓	✗	✗	✓	✓	✓	✗	✓	✓	✗	✗	✓	✓	✗	✗
ARKA	✓	◆	◇	✗	✓	✓	✓	✓	✗	✓	✓	✓	✗	✓	✓	✓	✗	✓	✓	✗	✗
TELA	✓	◆	◇	✗	✓	✓	✓	✓	✗	✓	✓	✓	✗	✓	✓	✓	✗	✓	✓	✗	✗
VEVE	✓	◆	◇	✗	✓	✓	✓	✗	✗	✓	✓	✓	✗	✓	✓	✗	✗	✓	✓	✗	✗
FLUR	✓	◆	◇	◇	✓	✓	✓	✗	✓	✓	✓	✓	✓	✓	✓	✗	✓	✗	✗	✗	✗
LATO	✓	◆	◇	◇	✓	✓	✓	✗	✓	✓	✓	✓	✓	✓	✓	✗	✓	✗	✗	✗	✗
LALO	✓	◆	◇	◇	✓	✓	✓	✓	✓	✓	✓	✓	✓	✓	✓	✓	✓	✓	✗	✓	✓
TALO	✓	◆	◇	◇	✓	✓	✓	✓	✓	✓	✓	✓	✓	✓	✓	✓	✓	✓	✗	✓	✓
MDIN	●	◆	✗	✗	✓	✓	✓	✗	✗	✓	✓	✗	✗	✓	✓	✗	✗	✓	✓	✗	✗

✓ = Compatible  
 ✗ = NOT Compatible  
 ◆ = NOT Compatible with 6.0 & 7.5 strips  
 ◇ = Wet rated but with no lens  
 ● = NOT Compatible with 7.5 strip

EXTRUSIONS	STATIC WHITE - HE															
	1.5 W/ft				3.0 W/ft				6.0 W/ft				9.0 W/ft			
	DRY	DMP	WET	ENC	DRY	DMP	WET	ENC	DRY	DMP	WET	ENC	DRY	DMP	WET	ENC
SLIM	✗	✗	✗	✗	✗	✗	✗	✗	✗	✗	✗	✗	✗	✗	✗	✗
WIDE	✓	✗	✓	✗	✓	✗	✓	✗	✓	✗	✓	✗	✗	✗	✗	✗
ROND	✗	✗	✗	✗	✗	✗	✗	✗	✗	✗	✗	✗	✗	✗	✗	✗
VEGA	✗	✗	✗	✗	✗	✗	✗	✗	✗	✗	✗	✗	✗	✗	✗	✗
TORQ	✓	✗	✗	✗	✓	✗	✗	✗	✓	✗	✗	✗	✓	✗	✗	✗
TRE3	✓	✗	✗	✗	✓	✗	✗	✗	✓	✗	✗	✗	✗	✗	✗	✗
ARKA	✓	✗	✗	✗	✓	✗	✗	✗	✓	✗	✗	✗	✗	✗	✗	✗
TELA	✓	✗	✗	✗	✓	✗	✗	✗	✓	✗	✗	✗	✗	✗	✗	✗
VEVE	✓	✗	✗	✗	✓	✗	✗	✗	✓	✗	✗	✗	✗	✗	✗	✗
FLUR	✓	✗	✗	✗	✓	✗	✗	✗	✓	✗	✗	✗	✓	✗	✗	✗
LATO	✓	✗	✗	✗	✓	✗	✗	✗	✓	✗	✗	✗	✗	✗	✗	✗
LALO	✓	✗	✗	✗	✓	✗	✗	✗	✓	✗	✗	✗	✗	✗	✗	✗
TALO	✓	✗	✗	✗	✓	✗	✗	✗	✓	✗	✗	✗	✗	✗	✗	✗
MDIN	✓	✗	✗	✗	✓	✗	✗	✗	✓	✗	✗	✗	✗	✗	✗	✗

✓ = Compatible  
 ✗ = NOT Compatible

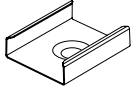
# MOUNTING INSTALLATION

## EXTRUSIONS - SURFACE - SLIM

Model: iQA

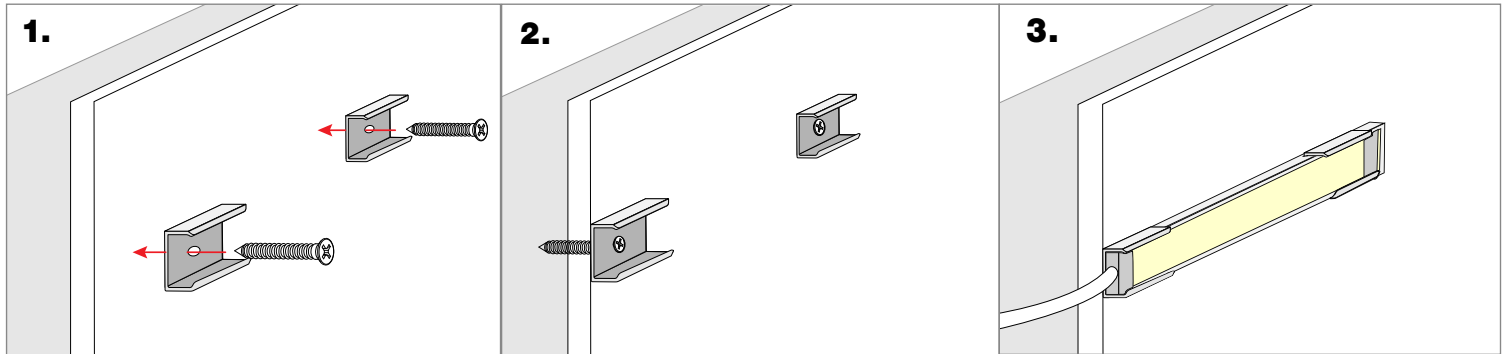


**MOUNTING** NOTE: 2 clips provided for 4' or less;  
4 clips provided for greater than 4'

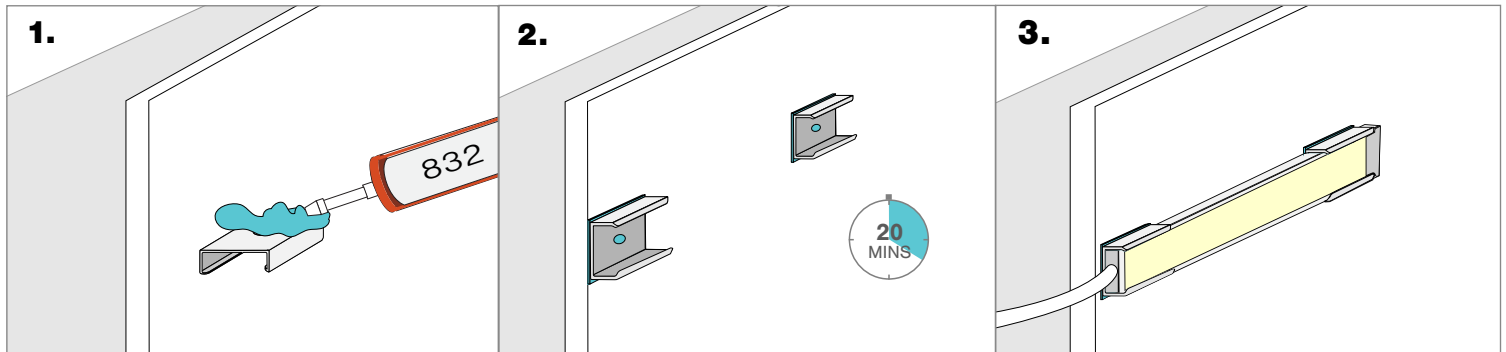


SLIM-SST

### Screw Mounting

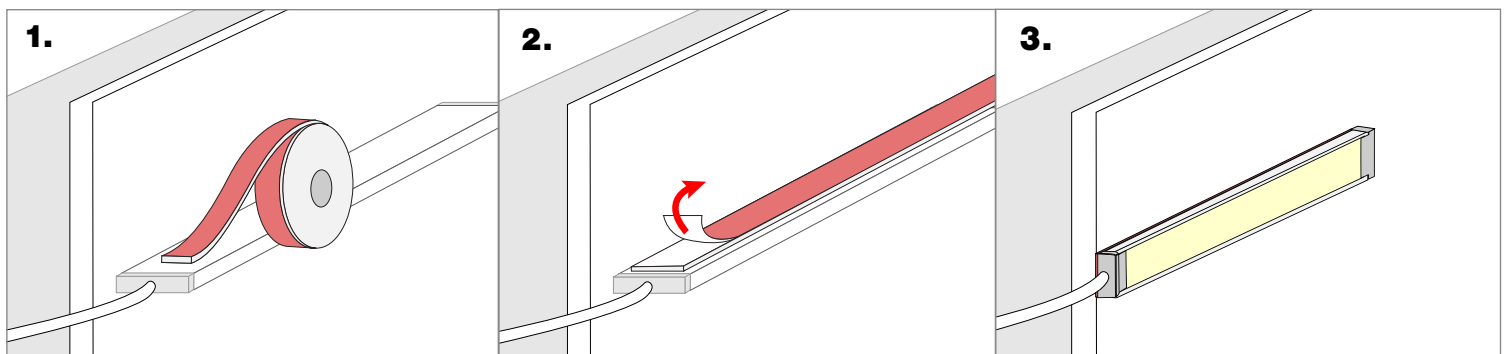


### 832 Silicone Mounting



**NOTE:** 832 Silicone use in a well-ventilated area, 832 Silicone sold with Caulking gun. Do not use in any submersible applications.

### VHB Mounting



**NOTES:** • Field modifications must comply with Q-Tran's installation methods otherwise warranty is null and void