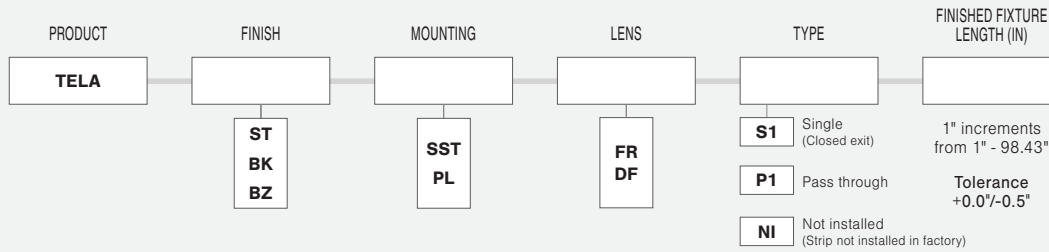




TELA

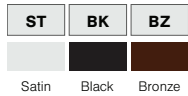
EXTRUSIONS - ALUMINUM

Model: iQA



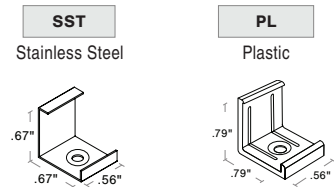
- NOTES:**
- UL Listed when assembled with STRIP LEDs at Q-Tran
 - NRTL Listed for install in Storage Areas with Clothing, NEC Field 410.2 and 410.16 when assembled as a fixture, with 4.0 w/ft or less, at Q-Tran facility (Not applicable for encapsulation)
 - Field modifications must comply with Q-Tran's installation methods otherwise warranty is null and void

FINISH



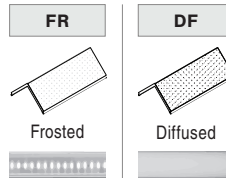
MOUNTING

NOTE: 2 clips provided for 4' or less; 4 clips provided for greater than 4'

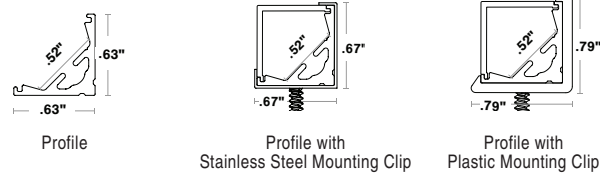


Black clip standard with black extrusion

LENS with LED visibility

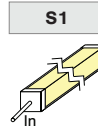


DIMENSIONS

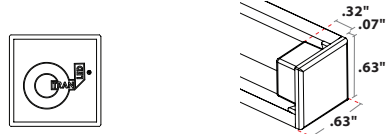


TYPE

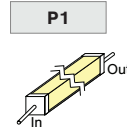
SINGLE (Input only)



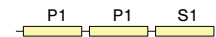
END CAPS



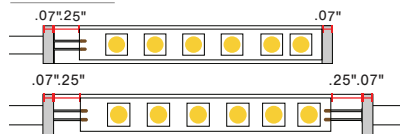
PASS THROUGH (Input/Output)



ORDER EXAMPLE

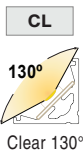


LENGTH (IN) : Add to nominal LED length for fixture length

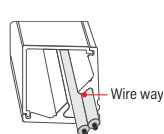


$$\begin{aligned} & \text{Endcap\#1} \quad \text{Endcap\#2} \quad \text{Space to solder wire} \\ & \text{S1 } .07'' + .07'' + .25'' = .39'' \\ & \text{P1 } .07'' + .07'' + 2(.25'') = .64'' \end{aligned}$$

CUT OFF



WIRE WAY



COMPATIBLE LEDs

STATIC WHITE (SW)				DYNAMIC WHITE (DW)				STATIC COLOR (SC)				RGB			RGBW			
DRY	DMP	WET	ENC	DRY	DMP	WET	ENC	DRY	DMP	WET	ENC	DRY	DMP	WET	DRY	DMP	WET	ENC
✓	✓	✓	✗	✓	✓	✓	✗	✓	✓	✓	✗	✓	✓	✓	✓	✓	✗	✗

✓ = Compatible ✗ = NOT Compatible ◆ = NOT Compatible with 6.0 & 7.5 strips

PROJECT NAME	DATE	COMPANY	TYPE	NOTE

RESOURCE GUIDE

EXTRUSIONS - CORNER - TELA

Model: iQA



FINISH

SATIN



SATIN ANODIZED
MATTE FINISH
GREY ENDCAPS

BLACK



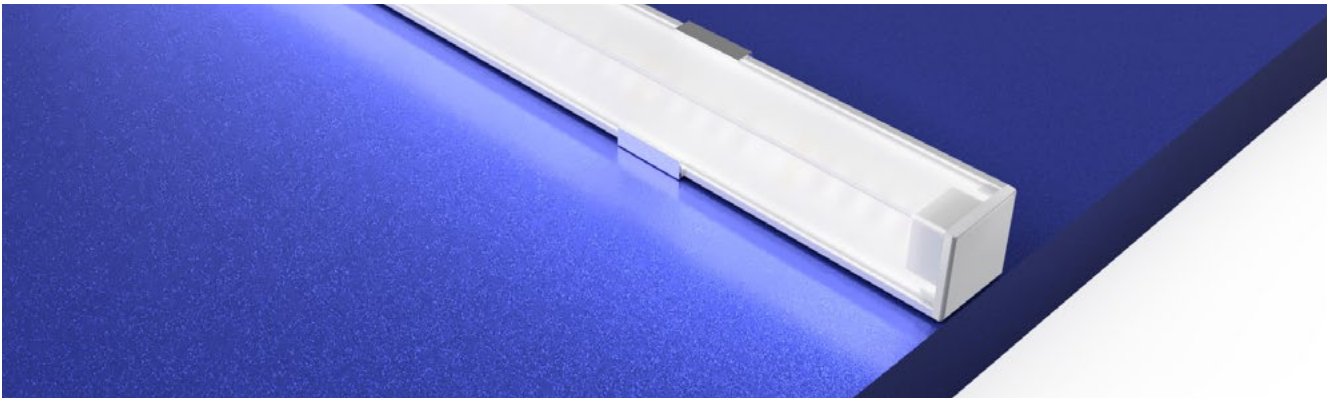
BLACK ANODIZED
MATTE FINISH
BLACK ENDCAPS

BRONZE



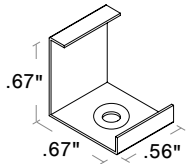
BRONZE ANODIZED
MATTE FINISH
BRONZE ENDCAPS

MOUNTING TYPE - CORNER



MOUNTING - HARDWARE

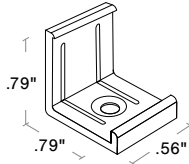
Stainless Steel Clip (SST)



2 clips provided for 4' or less;
4 clips provided for greater than 4'

- Stainless Steel
- Indoor/Outdoor
- #4 x 5/8" Flat Head SS (1 per clip included)

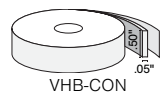
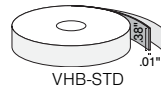
Plastic Clip (PL)



2 clips provided for 4' or less;
4 clips provided for greater than 4'

- Plastic
- Indoor/Outdoor
- #4 x 5/8" Flat Head SS (1 per clip included)

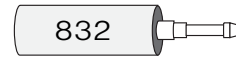
VHB-STD & VHB-CON (see Accessory cutsheet)



- Double sided strong adhesive tape
- VHB-STD is for Indoor use
- VHB-CON bonds to concrete

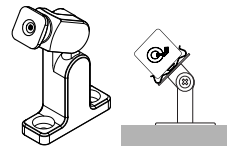
832

(see Accessory cutsheet)



- Strong adhesive
- Not submersible, For dry and wet locations only

Q-ANGLE & PIVOT BRACKET (see Accessory cutsheet)



Q-ANGLE PIVOT

- Adjustable mounting bracket
- Q-Angle: Indoor/Outdoor
- Pivot Bracket: Indoor

LENS

FR Frosted

DF Diffused



CUT OFF



Clear 130°

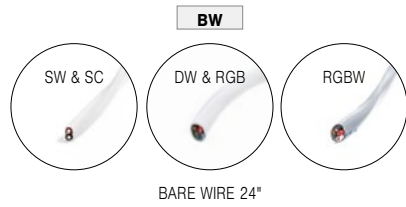
RESOURCE GUIDE

EXTRUSIONS - CORNER - TELA

Model: iQA



CONNECTORS/WIRE



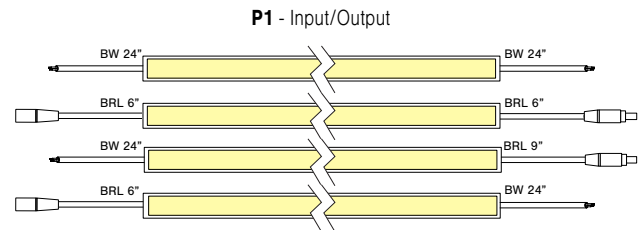
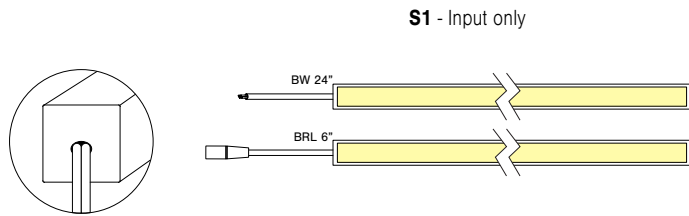
STATIC WHITE AND STATIC COLOR ONLY



LIGHT ORIENTATION



TYPE To order a bare extrusion without a strip installed in Q-Tran factory, choose **NI** (Not Installed) for your Type option



RESOURCE GUIDE - COMPATIBILITY

STRIP & EXTRUSION



EXTRUSIONS	STATIC WHITE				DYNAMIC WHITE				STATIC COLOR				RGB				RGBW				
	1.5 - 7.5 W/ft				IA5.0W/ft	6.0 W/ft				5.0 W/ft				6.0 W/ft				6.0 W/ft			
	DRY	DMP	WET	ENC	DRY	DRY	DMP	WET	ENC	DRY	DMP	WET	ENC	DRY	DMP	WET	ENC	DRY	DMP	WET	ENC
SLIM	✓	◆	◇	✗	✓	✓	✓	✗	✗	✓	✓	◇	✗	✓	✓	✗	✗	✗	✗	✗	✗
WIDE	✓	◆	◇	✗	✓	✓	✓	✓	✗	✓	✓	✓	✗	✓	✓	✓	✗	✓	✓	✓	✗
ROND	✓	◆	✗	✗	✓	✓	✓	✗	✗	✓	✓	✗	✗	✓	✓	✗	✗	✗	✗	✗	✗
VEGA	✓	◆	✗	✗	✓	✓	✓	✗	✗	✓	✓	✗	✗	✓	✓	✗	✗	✗	✗	✗	✗
TORQ	✓	◆	◆	◆	✓	✓	✓	✗	✗	✓	✓	✓	✓	✓	✓	✗	✓	✗	✗	✗	✗
TRE3	✓	◆	◆	✗	✓	✓	✓	✗	✗	✓	✓	✓	✗	✓	✓	✗	✗	✓	✓	✗	✗
ARKA	✓	◆	◆	✗	✓	✓	✓	✓	✗	✓	✓	✓	✗	✓	✓	✓	✗	✓	✓	✗	✗
TELA	✓	◆	◆	✗	✓	✓	✓	✓	✗	✓	✓	✓	✗	✓	✓	✓	✗	✓	✓	✗	✗
VEVE	✓	◆	◆	✗	✓	✓	✓	✗	✗	✓	✓	✓	✗	✓	✓	✗	✗	✓	✓	✗	✗
FLUR	✓	◆	◆	◆	✓	✓	✓	✗	✓	✓	✓	✓	✓	✓	✓	✗	✓	✗	✗	✗	✗
LATO	✓	◆	◆	◆	✓	✓	✓	✗	✓	✓	✓	✓	✓	✓	✓	✗	✓	✗	✗	✗	✗
LALO	✓	◆	◆	◆	✓	✓	✓	✓	✓	✓	✓	✓	✓	✓	✓	✓	✓	✓	✗	✓	✓
TALO	✓	◆	◆	◆	✓	✓	✓	✓	✓	✓	✓	✓	✓	✓	✓	✓	✓	✓	✗	✓	✓
MDIN	●	◆	✗	✗	✓	✓	✓	✗	✗	✓	✓	✗	✗	✓	✓	✗	✗	✓	✓	✗	✗

✓ = Compatible
 ✗ = NOT Compatible
 ◆ = NOT Compatible with 6.0 & 7.5 strips
 ◇ = Wet rated but with no lens
 ● = NOT Compatible with 7.5 strip

EXTRUSIONS	STATIC WHITE - HE															
	1.5 W/ft				3.0 W/ft				6.0 W/ft				9.0 W/ft			
	DRY	DMP	WET	ENC	DRY	DMP	WET	ENC	DRY	DMP	WET	ENC	DRY	DMP	WET	ENC
SLIM	✗	✗	✗	✗	✗	✗	✗	✗	✗	✗	✗	✗	✗	✗	✗	✗
WIDE	✓	✗	✓	✗	✓	✗	✓	✗	✓	✗	✓	✗	✗	✗	✗	✗
ROND	✗	✗	✗	✗	✗	✗	✗	✗	✗	✗	✗	✗	✗	✗	✗	✗
VEGA	✗	✗	✗	✗	✗	✗	✗	✗	✗	✗	✗	✗	✗	✗	✗	✗
TORQ	✓	✗	✗	✗	✓	✗	✗	✗	✓	✗	✗	✗	✓	✗	✗	✗
TRE3	✓	✗	✗	✗	✓	✗	✗	✗	✓	✗	✗	✗	✗	✗	✗	✗
ARKA	✓	✗	✗	✗	✓	✗	✗	✗	✓	✗	✗	✗	✗	✗	✗	✗
TELA	✓	✗	✗	✗	✓	✗	✗	✗	✓	✗	✗	✗	✗	✗	✗	✗
VEVE	✓	✗	✗	✗	✓	✗	✗	✗	✓	✗	✗	✗	✗	✗	✗	✗
FLUR	✓	✗	✗	✗	✓	✗	✗	✗	✓	✗	✗	✗	✓	✗	✗	✗
LATO	✓	✗	✗	✗	✓	✗	✗	✗	✓	✗	✗	✗	✗	✗	✗	✗
LALO	✓	✗	✗	✗	✓	✗	✗	✗	✓	✗	✗	✗	✗	✗	✗	✗
TALO	✓	✗	✗	✗	✓	✗	✗	✗	✓	✗	✗	✗	✗	✗	✗	✗
MDIN	✓	✗	✗	✗	✓	✗	✗	✗	✓	✗	✗	✗	✗	✗	✗	✗

✓ = Compatible
 ✗ = NOT Compatible

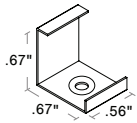
MOUNTING INSTALLATION

EXTRUSIONS - CORNER - TELA

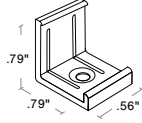
Model: iQA



MOUNTING NOTE: 2 clips provided for 4' or less;
4 clips provided for greater than 4'

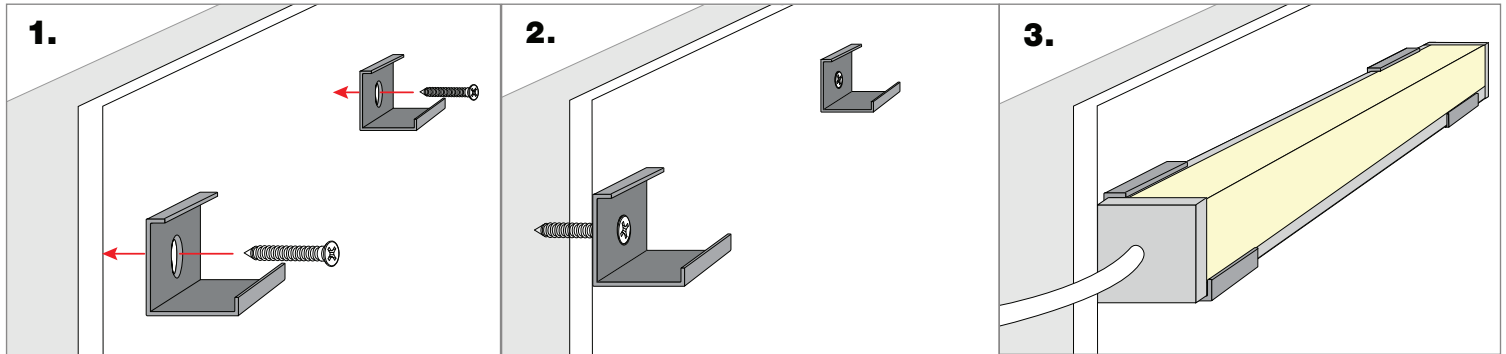


Stainless Steel

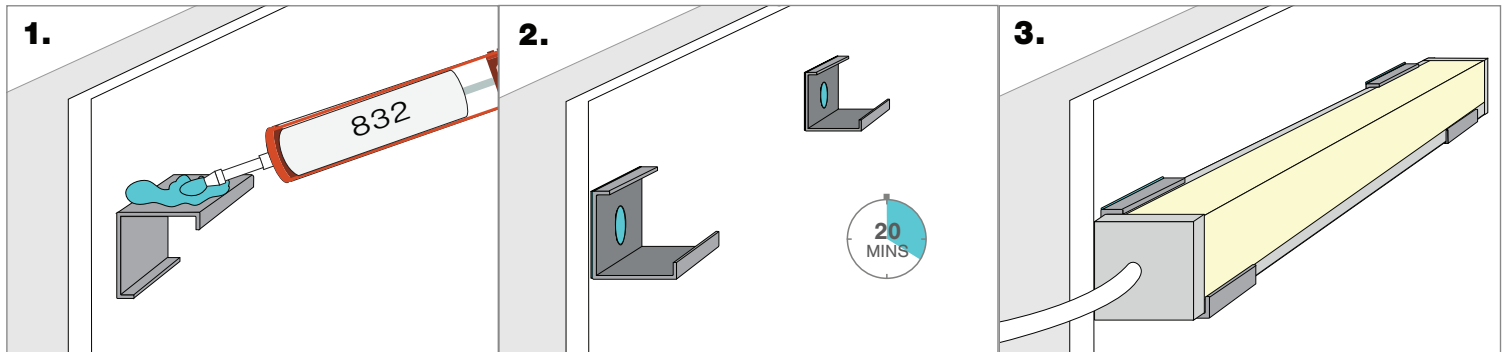


Plastic

Screw Mounting

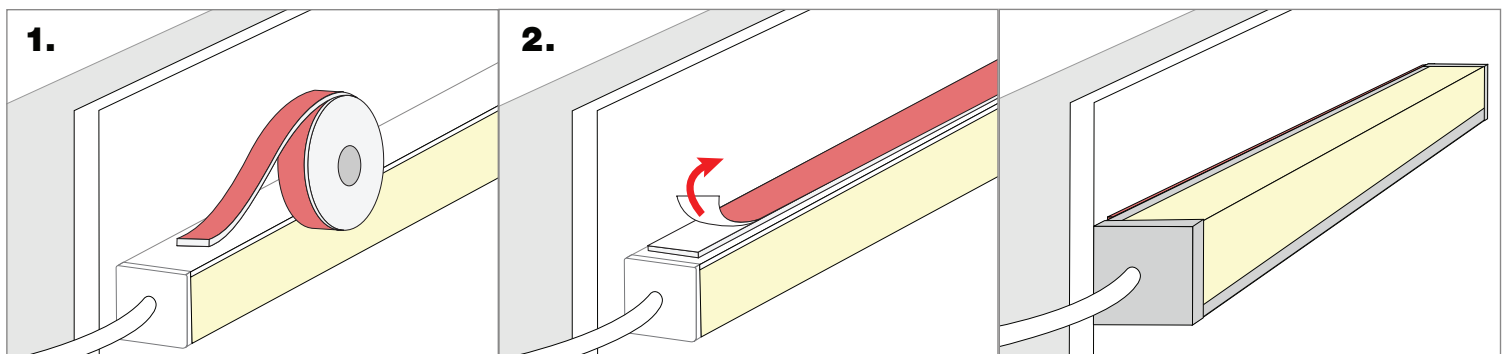


832 Silicone Mounting



NOTE: 832 Silicone use in a well-ventilated area, 832 Silicone sold with Caulking gun. Do not use in any submersible applications.

VHB Mounting



NOTES: • Field modifications must comply with Q-Tran's installation methods otherwise warranty is null and void