

# RESOURCE GUIDE

## EXTRUSIONS - SURFACE - VEGA

Model: iQA



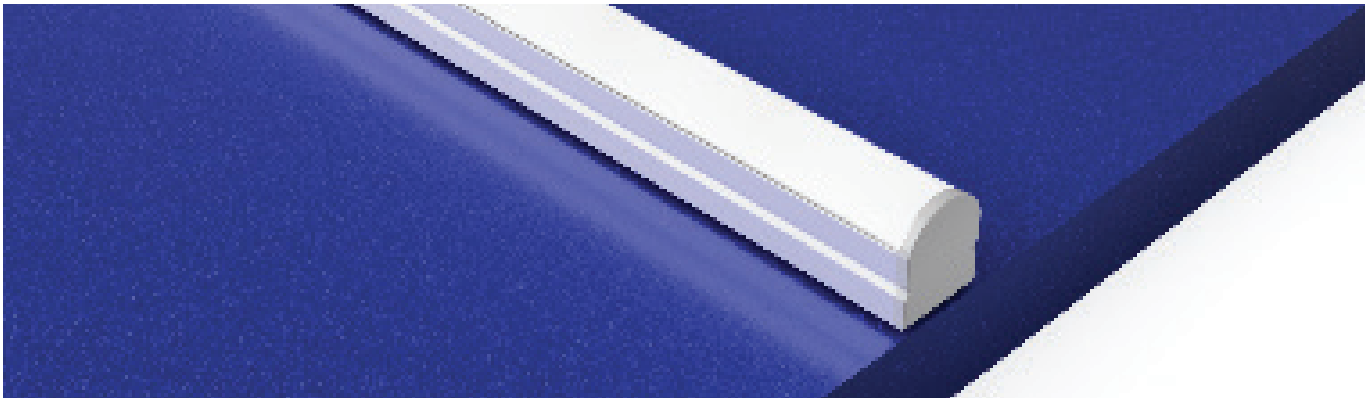
### FINISH

#### SATIN



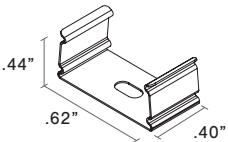
SATIN ANODIZED  
MATTE FINISH  
GREY ENDCAPS

### MOUNTING TYPE - SURFACE



### MOUNTING - HARDWARE

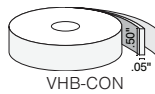
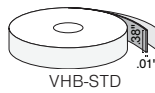
#### Stainless Steel Clip (VEGA-SST)



2 clips provided for 4' or less;  
4 clips provided for greater than 4'

- Stainless Steel
- Indoor/Outdoor
- #4 x 5/8" Flat Head SS (1 per clip included)

#### VHB-STD & VHB-CON (see Accessory cutsheet)



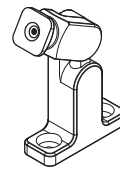
- Double sided strong adhesive tape
- VHB-STD is for Indoor use
- VHB-CON bonds to concrete

#### 832 (see Accessory cutsheet)



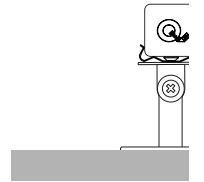
- Strong adhesive
- Not submersible, For dry and wet locations only

#### Q-ANGLE (see Accessory cutsheet)



- Adjustable mounting bracket
- Indoor/Outdoor

#### PIVOT BRACKET (see Accessory cutsheet)



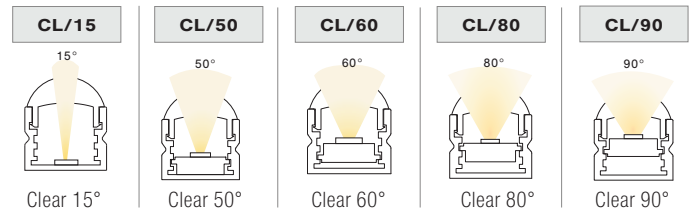
- Adjustable mounting bracket
- Indoor

### LENS

#### CL Clear



### CUT OFF



# RESOURCE GUIDE

## EXTRUSIONS - SURFACE - VEGA

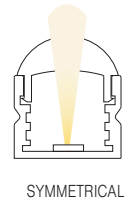
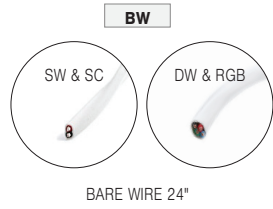
Model: iQA



### CONNECTORS/WIRE

STATIC WHITE AND STATIC COLOR ONLY

### LIGHT ORIENTATION



**TYPE** To order a bare extrusion without a strip installed in Q-Tran factory, choose **NI** (Not Installed) for your Type option

