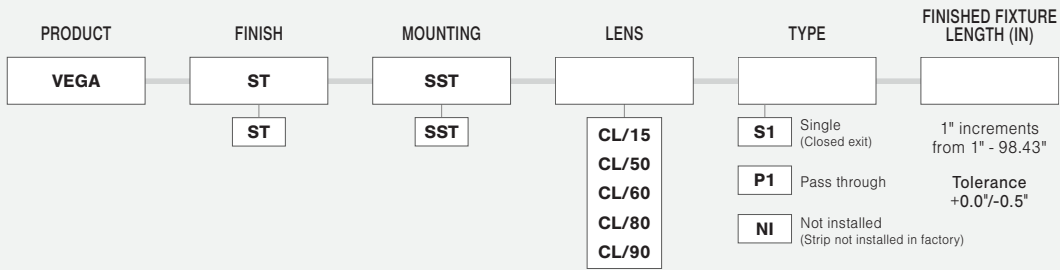




# VEGA

## EXTRUSIONS - ALUMINUM

Model: iQA



- NOTES:**
- UL Listed when assembled with STRIP LEDs at Q-Tran
  - NRTL Listed for install in Storage Areas with Clothing, NEC Field 410.2 and 410.16 when assembled as a fixture, with 4.0 w/ft or less, at Q-Tran facility (Not applicable for encapsulation)
  - Field modifications must comply with Q-Tran's installation methods otherwise warranty is null and void

### FINISH

ST

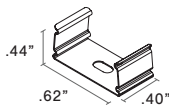
Satin

### MOUNTING

NOTE: 2 clips provided for 4' or less;  
4 clips provided for greater than 4'

VEGA-SST QTY

Stainless Steel



### LENS with LED visibility

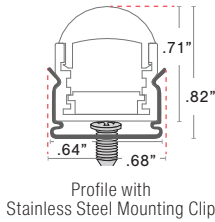
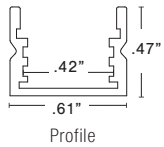
CL



Clear



### DIMENSIONS



### TYPE

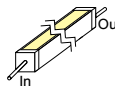
SINGLE (Input only)

S1

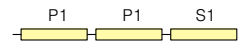


PASS THROUGH (Input/Output)

P1

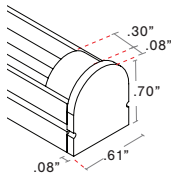


### ORDER EXAMPLE



### END CAPS

ENDCAP QTY

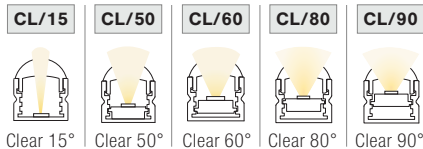


**LENGTH (IN)** : Add to nominal LED length for fixture length



$$\begin{aligned} &\text{Endcap\#1} \\ &\text{Endcap\#2} \\ &\text{Space to solder wire} \\ \text{S1 } &.08'' + .08'' + .25'' = .41'' \\ \text{P1 } &.08'' + .08'' + 2(.25'') = .66'' \end{aligned}$$

### CUT OFF



### COMPATIBLE LEDs

STATIC WHITE (SW)				DYNAMIC WHITE (DW)				STATIC COLOR (SC)				RGB			RGBW				
DRY	DMP	WET	ENC	DRY	DMP	WET	ENC	DRY	DMP	WET	ENC	DRY	DMP	WET	DRY	DMP	WET	ENC	
✓	✓	✗	✗	✓	✓	✗	✗	✓	✓	✗	✗	✓	✗	✗	✗	✗	✗	✗	✗

✓ = Compatible   ✗ = NOT Compatible  
 ✓ = NOT Compatible with 6.0 & 7.5 strips

PROJECT NAME	DATE	COMPANY	TYPE	NOTE

# RESOURCE GUIDE

## EXTRUSIONS - SURFACE - VEGA

Model: iQA



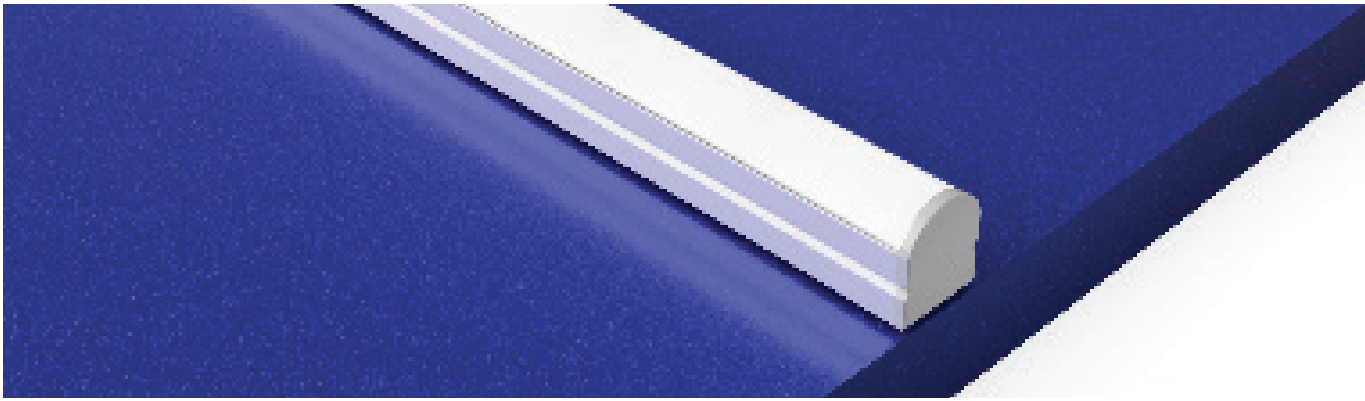
### FINISH

#### SATIN



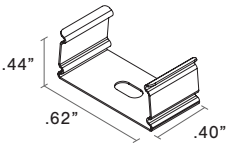
SATIN ANODIZED  
MATTE FINISH  
GREY ENDCAPS

### MOUNTING TYPE - SURFACE



### MOUNTING - HARDWARE

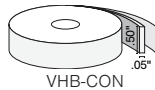
#### Stainless Steel Clip (VEGA-SST)



2 clips provided for 4' or less;  
4 clips provided for greater than 4'

- Stainless Steel
- Indoor/Outdoor
- #4 x 5/8" Flat Head SS (1 per clip included)

#### VHB-STD & VHB-CON (see Accessory cutsheet)



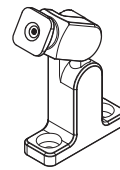
- Double sided strong adhesive tape
- VHB-STD is for Indoor use
- VHB-CON bonds to concrete

#### 832 (see Accessory cutsheet)



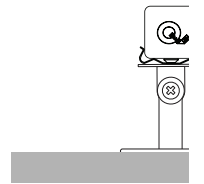
- Strong adhesive
- Not submersible, For dry and wet locations only

#### Q-ANGLE (see Accessory cutsheet)



- Adjustable mounting bracket
- Indoor/Outdoor

#### PIVOT BRACKET (see Accessory cutsheet)



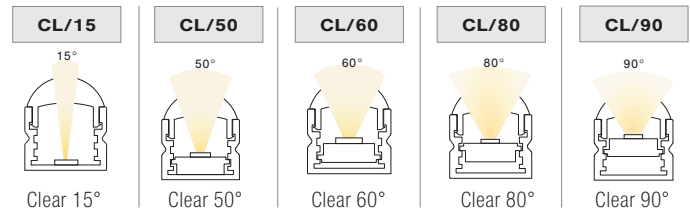
- Adjustable mounting bracket
- Indoor

### LENS

#### CL Clear



### CUT OFF



# RESOURCE GUIDE

## EXTRUSIONS - SURFACE - VEGA

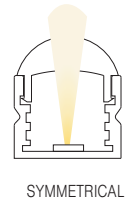
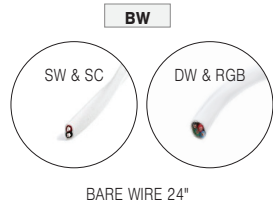
Model: iQA



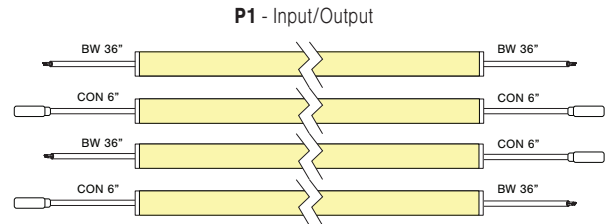
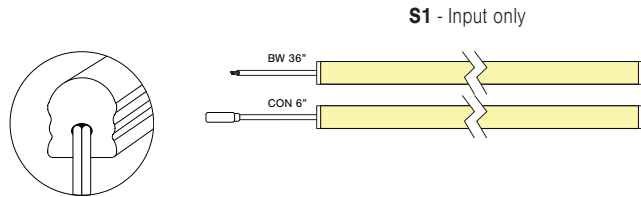
### CONNECTORS/WIRE

STATIC WHITE AND STATIC COLOR ONLY

### LIGHT ORIENTATION



**TYPE** To order a bare extrusion without a strip installed in Q-Tran factory, choose **NI** (Not Installed) for your Type option



# RESOURCE GUIDE - COMPATIBILITY

## STRIP & EXTRUSION



### STRIP AND EXTRUSION COMPATIBILITY

EXTRUSIONS	STATIC WHITE 1.5 - 7.5 W/ft				DYNAMIC WHITE 6.0 W/ft				STATIC COLOR 5.0 W/ft				RGB 5.3 W/ft				RGBW 6.0 W/ft				
	DRY	DMP	WET	ENC	DRY	DMP	WET	ENC	DRY	DMP	WET	ENC	DRY	DMP	WET	ENC	DRY	DMP	WET	ENC	
SLIM	◆	◆	◇	✗	✓	✓	✗	✗	✓	✓	◇	✗	✓	✗	✗	✗	✗	✗	✗	✗	✗
WIDE	✓	◆	◆	✗	✓	✓	✓	✗	✓	✓	✓	✗	✓	✗	✓	✗	✓	✓	✓	✗	
ROND	✓	◆	✗	✗	✓	✓	✗	✗	✓	✓	✗	✗	✓	✗	✗	✗	✗	✗	✗	✗	
VEGA	✓	◆	✗	✗	✓	✓	✗	✗	✓	✓	✗	✗	✓	✗	✗	✗	✗	✗	✗	✗	
TORQ	✓	◆	◆	◆	✓	✓	✗	✓	✓	✓	✓	✓	✓	✗	✗	✓	✗	✗	✗	✗	
TRE3	✓	◆	◆	✗	✓	✓	✗	✗	✓	✓	✓	✗	✓	✗	✗	✗	✓	✓	✗	✗	
ARKA	✓	◆	◆	✗	✓	✓	✓	✗	✓	✓	✓	✗	✓	✗	✓	✗	✓	✓	✗	✗	
TELA	✓	◆	◆	✗	✓	✓	✓	✗	✓	✓	✓	✗	✓	✗	✓	✗	✓	✓	✗	✗	
VEVE	✓	◆	◆	✗	✓	✓	✗	✗	✓	✓	✓	✗	✓	✗	✗	✗	✓	✓	✗	✗	
FLUR	✓	◆	◆	◆	✓	✓	✗	✓	✓	✓	✓	✓	✓	✗	✗	✓	✗	✗	✗	✗	
LATO	✓	◆	◆	◆	✓	✓	✗	✓	✓	✓	✓	✓	✓	✗	✗	✓	✗	✗	✗	✗	
LALO	✓	◆	◆	◆	✓	✓	✓	✓	✓	✓	✓	✓	✓	✗	✓	✓	✓	✓	✗	✓	
TALO	✓	◆	◆	◆	✓	✓	✓	✓	✓	✓	✓	✓	✓	✗	✓	✓	✓	✓	✗	✓	
MDIN	◆	◆	✗	✗	✗	✗	✗	✗	✗	✗	✗	✗	✗	✗	✗	✗	✗	✗	✗	✗	

- ◆ = NOT Compatible with 6.0 & 7.5 strips
- ◇ = Wet rated but with no lens
- ✓ = Compatible
- ✗ = NOT Compatible

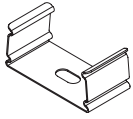
# MOUNTING INSTALLATION

## EXTRUSIONS - SURFACE - VEGA

Model: iQA

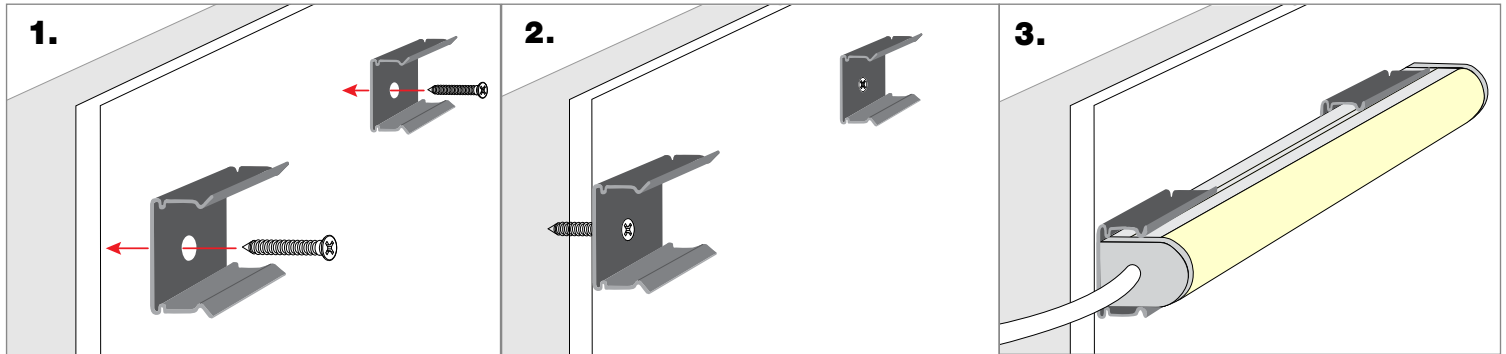


**MOUNTING** NOTE: 2 clips provided for 4' or less;  
4 clips provided for greater than 4'

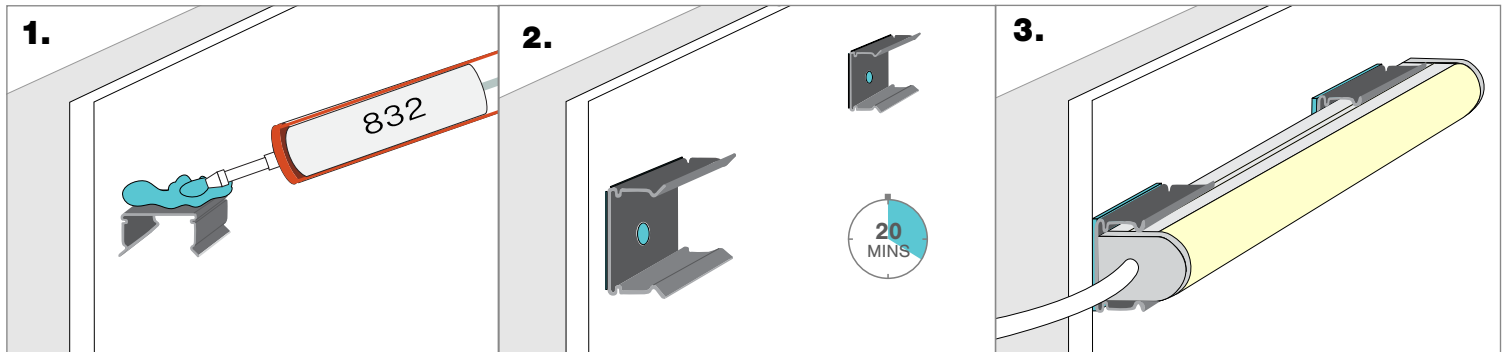


VEGA-SST

### Screw Mounting

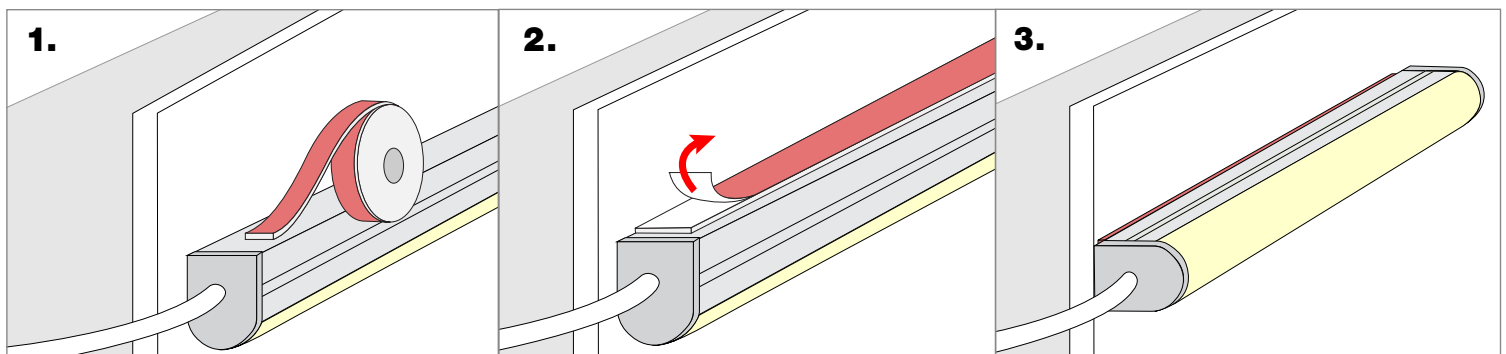


### 832 Silicone Mounting



**NOTE:** 832 Silicone use in a well-ventilated area, 832 Silicone sold with Caulking gun. Do not use in any submersible applications.

### VHB Mounting



**NOTES:** • Field modifications must comply with Q-Tran's installation methods otherwise warranty is null and void