

RESOURCE GUIDE

EXTRUSIONS - CORNER - VEVE

Model: iQA



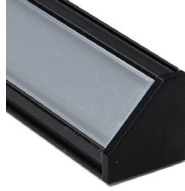
FINISH

SATIN



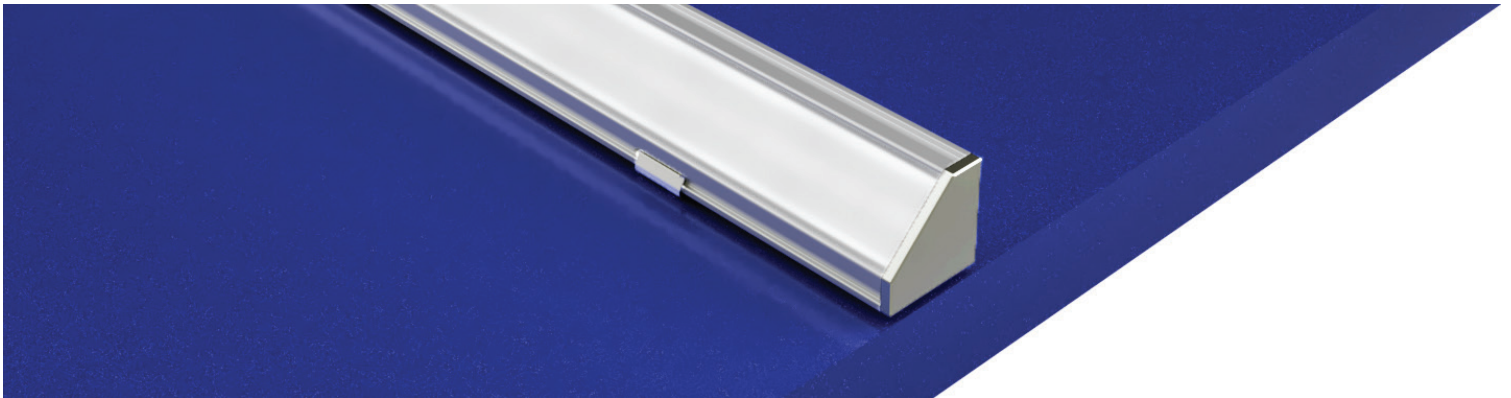
SATIN ANODIZED
MATTE FINISH
METALLIC ENDCAPS

BLACK



BLACK ANODIZED
MATTE FINISH
BLACK ENDCAPS

MOUNTING TYPE - CORNER



MOUNTING - HARDWARE

<p>Stainless Steel Clip (VEVE-SST)</p> <p>2 clips provided for 4' or less; 4 clips provided for greater than 4'</p> <ul style="list-style-type: none"> - Stainless Steel - Indoor/Outdoor - #4 x 5/8" Flat Head SS (1 per clip included) 	<p>Magnet Clip (VEVE-MG)</p> <p>1 Magnet clip per foot</p> <ul style="list-style-type: none"> - Stainless Steel - Neodymium magnet - Indoor 	<p>Magnet Mount Accessory (VEVE-MMA)</p> <p>Sold separately</p> <ul style="list-style-type: none"> - Steel Bracket - Indoor - #6 x 5/8" Flat Head SS (2 per bracket included) 	<p>832 (see Accessory cutsheet)</p> <ul style="list-style-type: none"> - Strong adhesive - Not submersible, For dry and wet locations only 	<p>VHB-STD & VHB-CON (see Accessory cutsheet)</p> <ul style="list-style-type: none"> - Double sided strong adhesive tape - VHB-STD is for Indoor use - VHB-CON bonds to concrete 	<p>Q-ANGLE (see Accessory cutsheet)</p> <ul style="list-style-type: none"> - Adjustable mounting bracket - Indoor/Outdoor
--	---	---	---	--	--

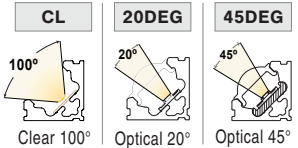
PIVOT BRACKET
(see Accessory cutsheet)

- Adjustable mounting bracket
- Indoor

LENS



CUT OFF



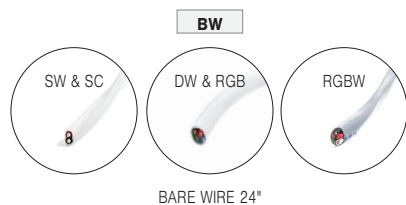
RESOURCE GUIDE

EXTRUSIONS - CORNER - VEVE

Model: iQA



CONNECTORS/WIRE



STATIC WHITE AND STATIC COLOR ONLY



LIGHT ORIENTATION



SYMMETRICAL

TYPE To order a bare extrusion without a strip installed in Q-Tran factory, choose **NI** (Not Installed) for your Type option

