

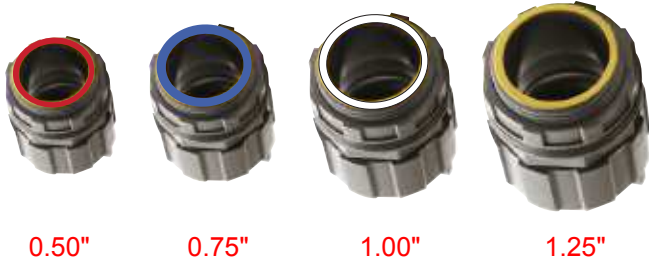


Q-CLIK WATER TIGHT FITTINGS



MST

Machine Screw Thread



0.50"

0.75"

1.00"

1.25"

NPT

National Pipe Taper

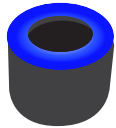


0.75"

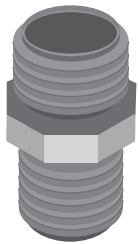
0.50"



Screw on cap with "wing nut" feature for finger tightening

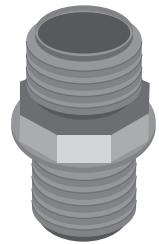


Click ring to compress insert and lock in screw cap and
Insert seals both to the inside of base and to wire



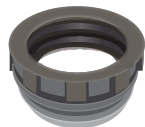
MST Base unit with long threaded base to fit plastic housings. Molded in "nut washer" nut for tightening base and washer to seat rubber washer to exterior of housing.

NPT Base unit with long threaded base to fit plastic housings. Molded in nut for tightening base.



One washer to seal outside
another to seal inside of housing.

One washer to seal outside



NUT WASHER:
A nut for tightening and a washer to seat rubber washer to inside of housing.

PROJECT NAME	DATE	COMPANY	TYPE	NOTE



Q-CLIK INSERTS

.5" Insert



One #12/14 AWG Two #14 AWG

Q.500-1B

Q.500-2A

.75" Insert



One #10 AWG One #12 AWG One #8 AWG One #10 AWG Two #12/14 AWG Three #14 AWG One #12+GND AWG

Q.750-SW10

Q.750-SW12

Q.750-1D

Q.750-1C

Q.750-2B

Q.750-3A

Q.750-1E

1" Insert



Two #10 AWG

Q1.00-2C

Three #12 AWG

Q1.00-3B

Five #14 AWG

Q1.00-5A

1.25" Insert



Five #10 AWG

Q1.25-5C

Six #12/14 AWG

Q1.25-6B

Eight #14 AWG

Q1.25-8A