

Photometric Details

BOXA-DW-WSC-DRY-24-HO-ENC-TL-S1-BW-NA



Product name:

BOXA-DW-WSC-DRY-24-HO-ENC-TL-S1-BW-NA

Date:

1/18/2019

Powering product:

IQ-PH-80-120/24

Output: 183 lm/ft

Peak: 53.3 cd

Power: 2.9 W/ft

PF: 1.0



Light efficiency:



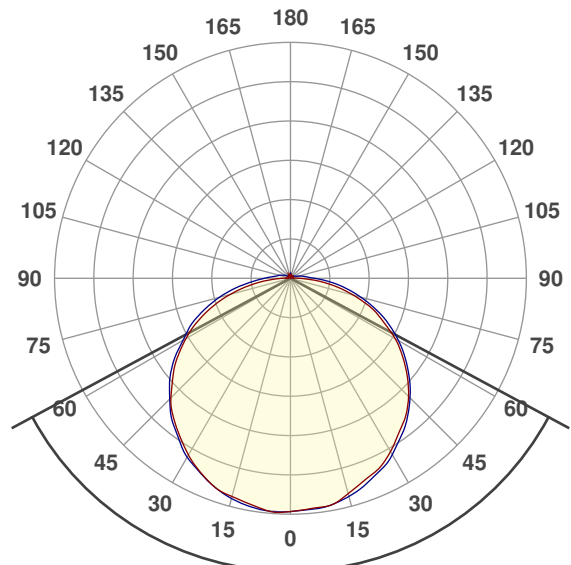
Light quality:



Color temperature:



Beam Angle

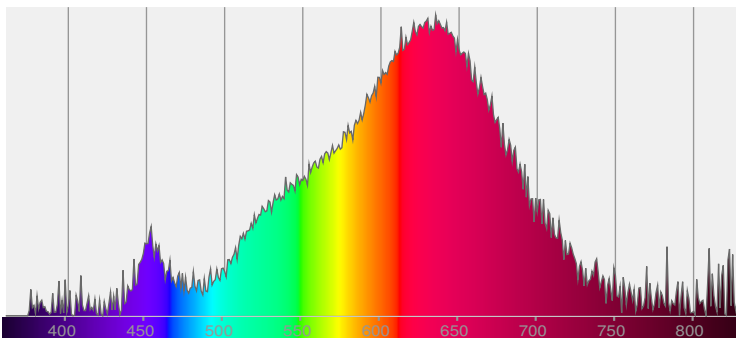


123.4°

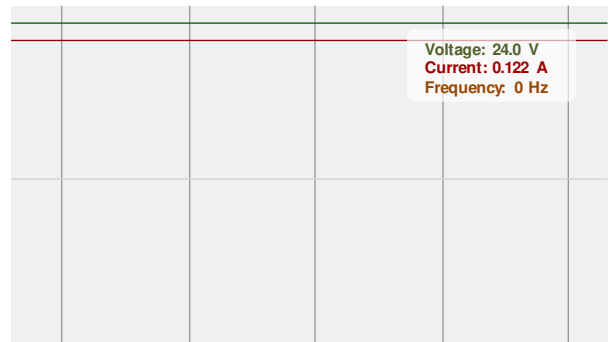


CIE 1931
x: 0.487
y: 0.411

Spectra

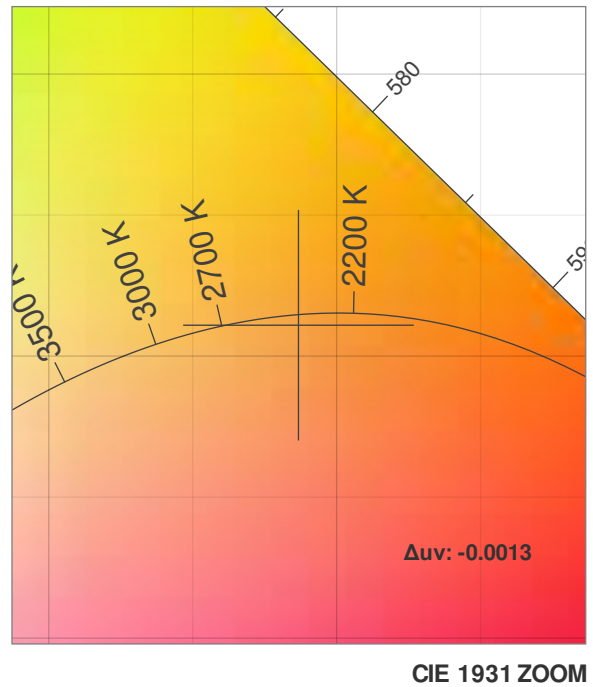
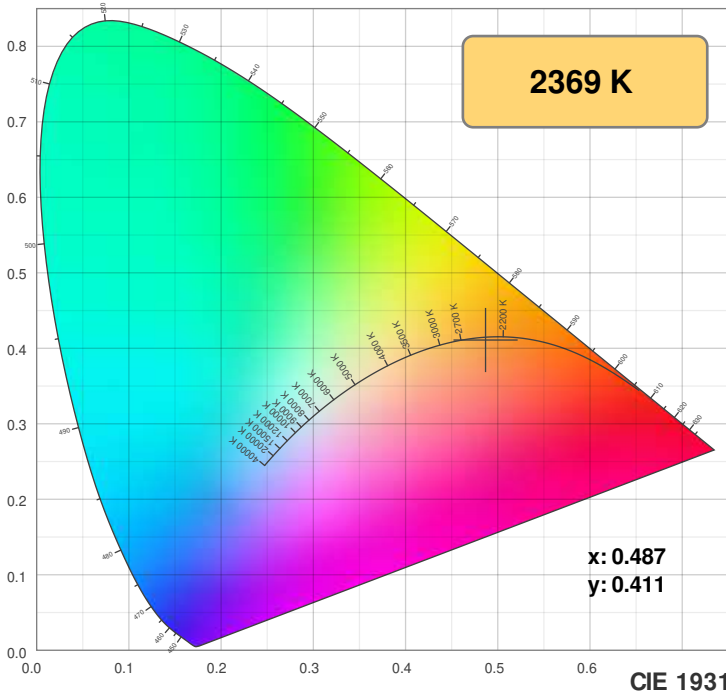


Power



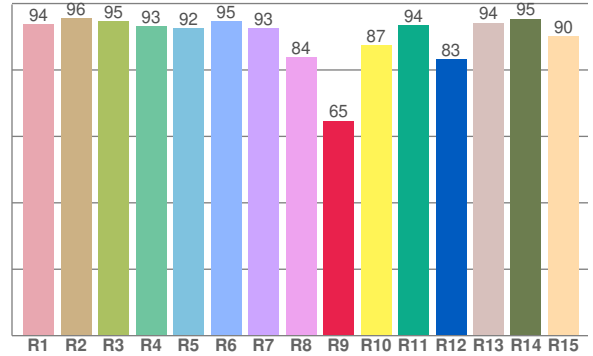
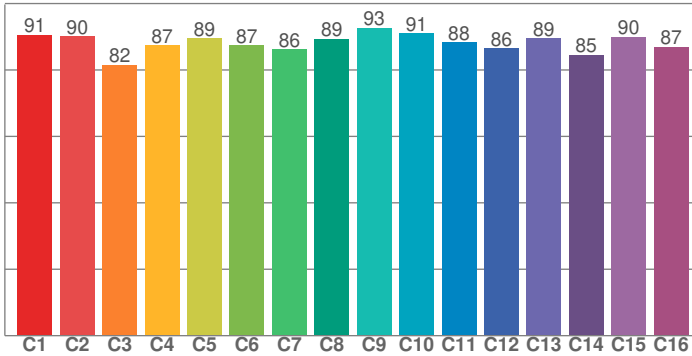
Color Details

BOXA-DW-WSC-DRY-24-HO-ENC-TL-S1-BW-NA



TM30: 88.5

CRI: 92.6 (R1-R8)



CRI R values, only R1-R8 are used to calculate final CRI value

R1	R2	R3	R4	R5	R6	R7	R8	R9	R10	R11	R12	R13	R14	R15
93.7	95.6	94.6	93.2	92.5	94.7	92.5	83.7	64.7	87.4	93.5	83.3	94.2	95.4	90.1

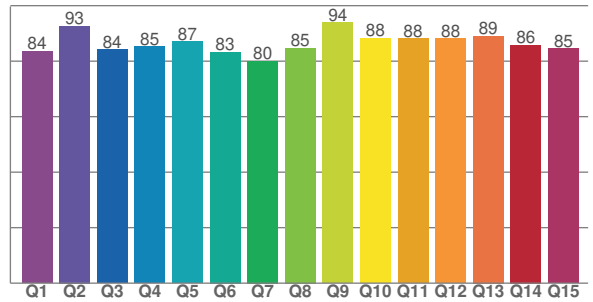
TM30 C values, 16 binned values out of total of 99 C values

C1	C2	C3	C4	C5	C6	C7	C8	C9	C10	C11	C12	C13	C14	C15	C16
90.5	90.2	81.6	87.4	89.4	87.4	86.2	89.4	92.7	91.1	88.3	86.5	89.5	84.6	89.9	86.9

CQS Q values

Q1	Q2	Q3	Q4	Q5	Q6	Q7	Q8	Q9	Q10	Q11	Q12	Q13	Q14	Q15
83.6	92.6	84.1	85.3	87.0	83.4	80.0	84.7	93.9	88.2	88.1	88.2	89.0	85.8	84.5

CQS: 85.9



Color parameters

Color temperature	Color rendering index	Red component	Color fidelity	Color gamut	Color quality scale	Color coordinate cie 1931	Color coordinate cie 1931	Color coordinate	Color coordinate	Color deviation from black body
CCT	CRI	CRI R9	TM30 Rf	TM30 Rg	CQS	x	y	u	v	Δuv
2369 K	92.6	64.7	88.5	103.2	85.9	0.487	0.411	0.280	0.354	-0.0013

TM30 Details

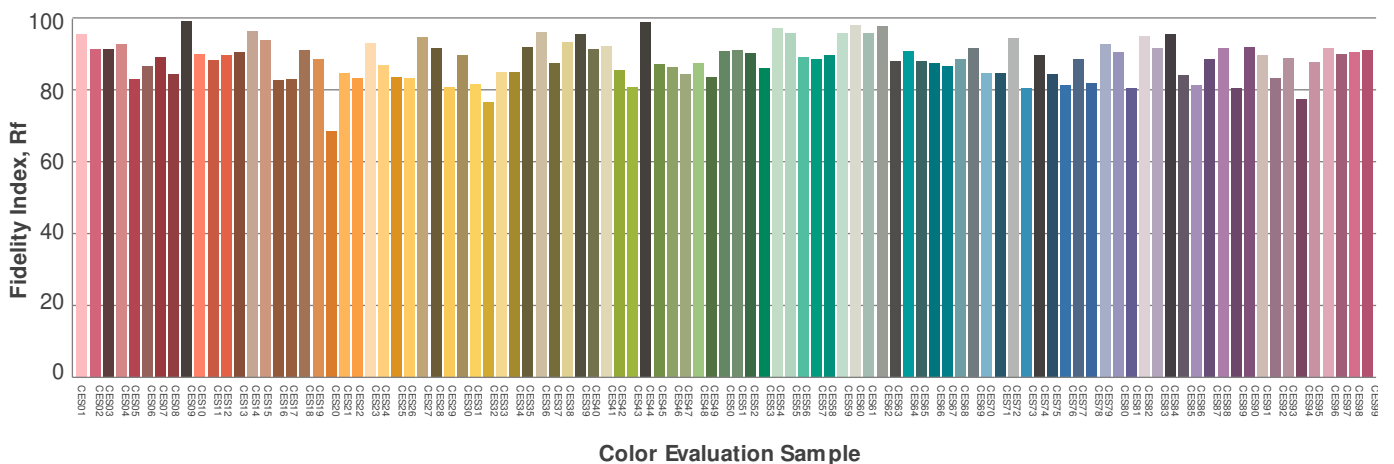
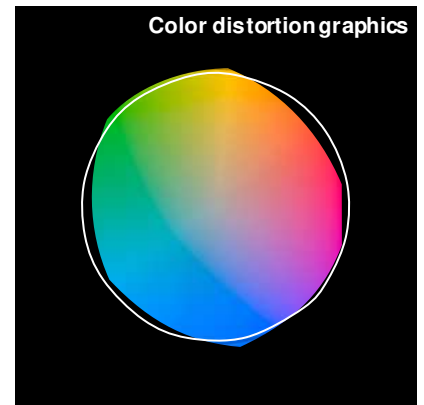
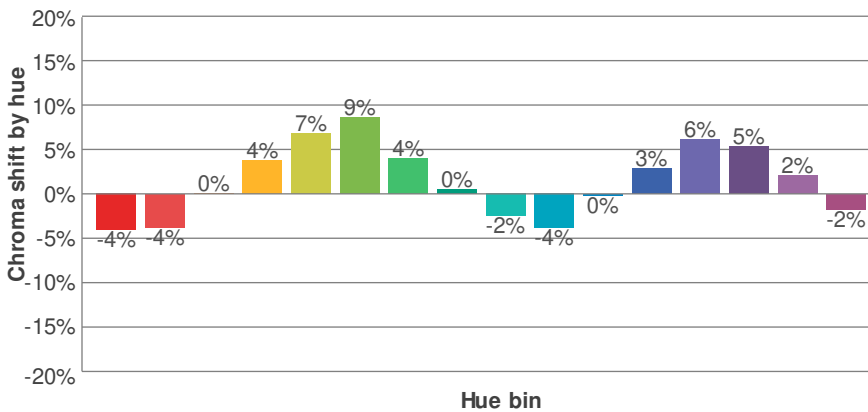
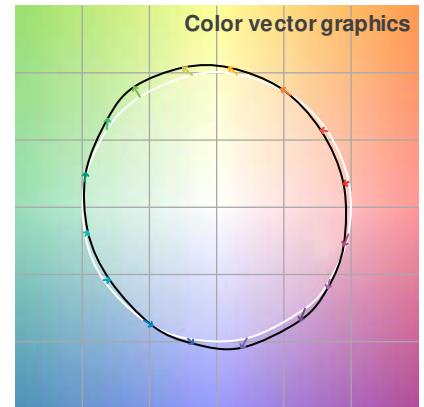
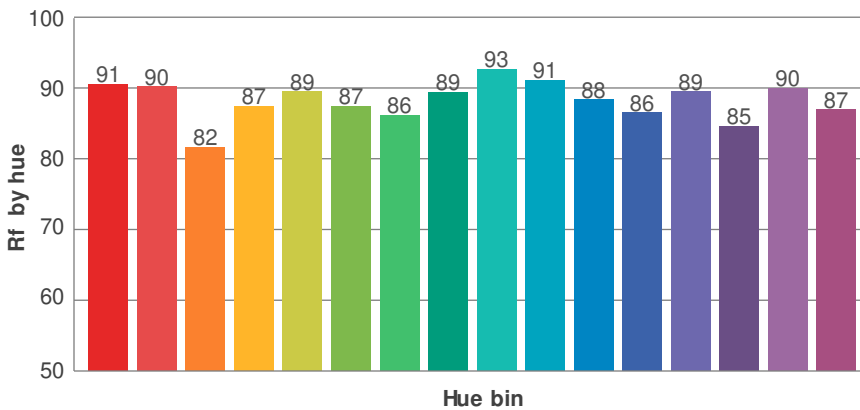
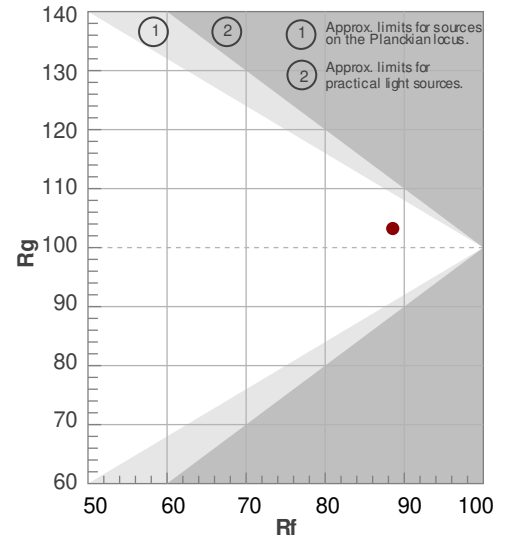
BOXA-DW-WSC-DRY-24-HO-ENC-TL-S1-BW-NA



Rf 88.5
Fidelity index Rf

Rg 103.2
Gammut index Rg

Hue Bin	R _f	Graphic shifts (%)	
		Chroma	Hue
1	91	-4%	-1%
2	90	-4%	3%
3	82	0%	8%
4	87	4%	7%
5	89	7%	5%
6	87	9%	0%
7	86	4%	-7%
8	89	0%	-6%
9	93	-2%	-3%
10	91	-4%	3%
11	88	0%	7%
12	86	3%	5%
13	89	6%	-5%
14	85	5%	-8%
15	90	2%	-6%
16	87	-2%	-9%



Photometric Details

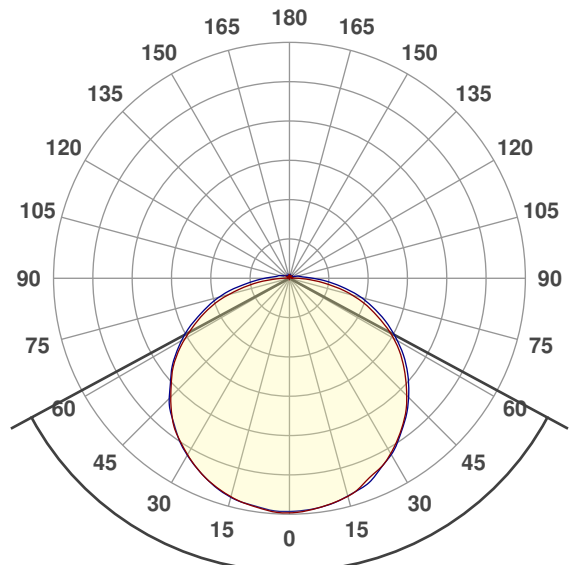
BOXA-DW-WSC-DRY-30-HO-ENC-TL-S1-BW-NA



Product name:	BOXA-DW-WSC-DRY-30-HO-ENC-TL-S1-BW-NA
Date:	1/18/2019
Powering product:	IQ-PH-80-120/24
Output:	189 lm/ft
Peak:	55.6 cd
Power:	2.9 W/ft
PF:	1.0



Beam Angle



123.3°



CIE 1931
x: 0.433
y: 0.400

Light efficiency:



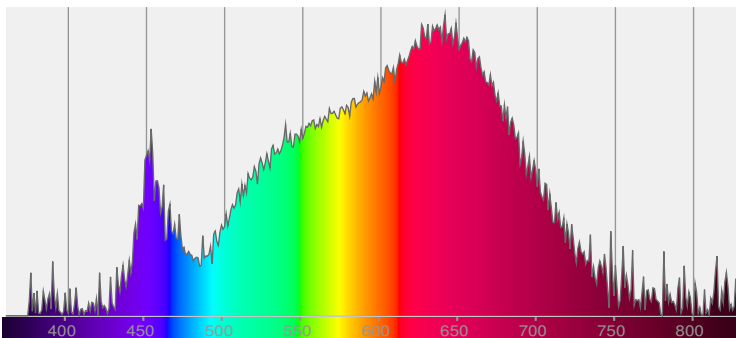
Light quality:



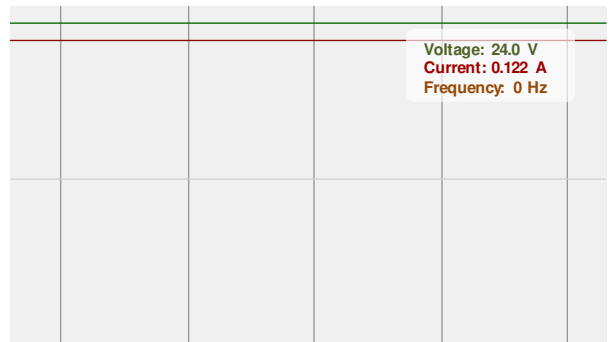
Color temperature:



Spectra

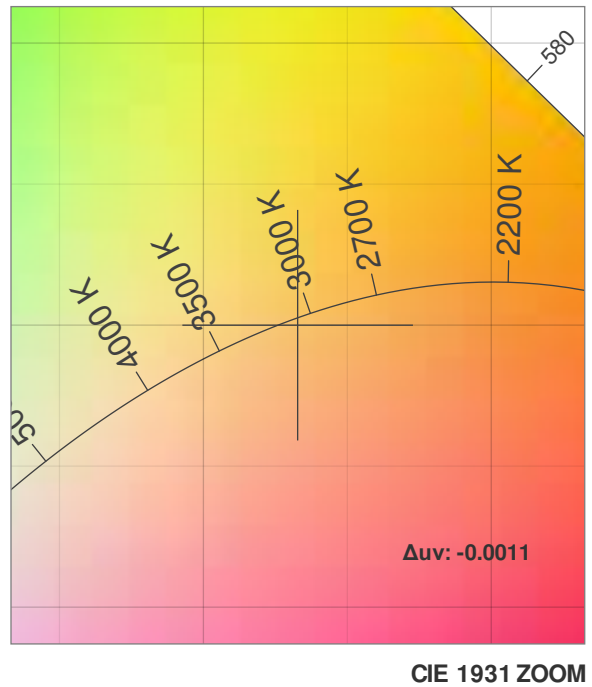
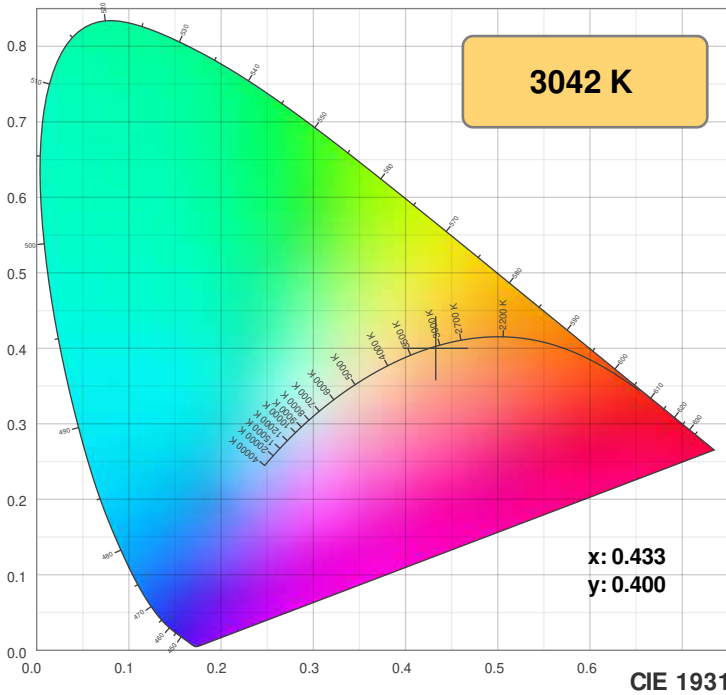


Power

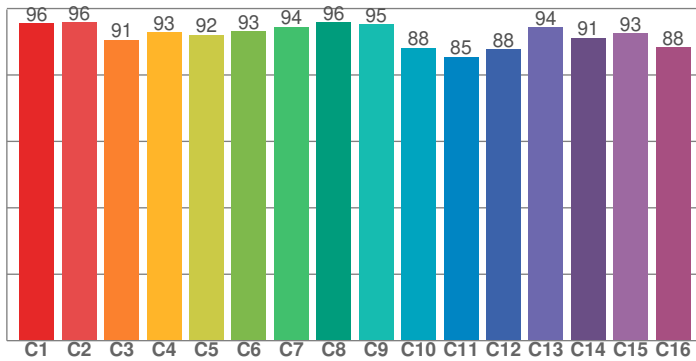


Color Details

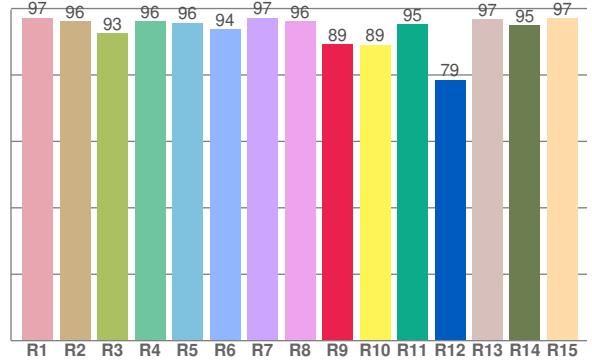
BOXA-DW-WSC-DRY-30-HO-ENC-TL-S1-BW-NA



TM30: 92.1



CRI: 95.6 (R1-R8)



CRI R values, only R1-R8 are used to calculate final CRI value

R1	R2	R3	R4	R5	R6	R7	R8	R9	R10	R11	R12	R13	R14	R15
97.2	96.2	92.6	96.2	95.7	93.7	97.2	96.1	89.2	89.1	95.4	78.5	96.9	94.9	97.1

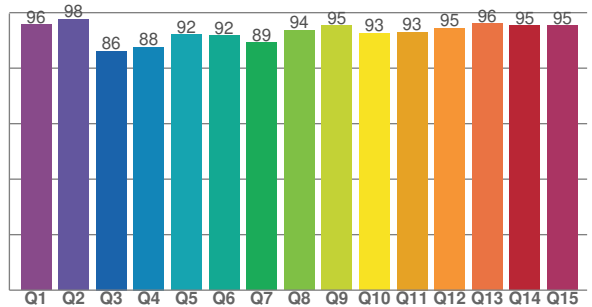
TM30 C values, 16 binned values out of total of 99 C values

C1	C2	C3	C4	C5	C6	C7	C8	C9	C10	C11	C12	C13	C14	C15	C16
95.5	95.8	90.5	92.8	92.1	93.2	94.4	95.8	95.2	88.2	85.4	87.6	94.3	91.1	92.6	88.3

CQS Q values

Q1	Q2	Q3	Q4	Q5	Q6	Q7	Q8	Q9	Q10	Q11	Q12	Q13	Q14	Q15
95.7	97.6	86.1	87.6	92.2	91.7	89.2	93.6	95.3	92.6	93.0	94.5	96.0	95.4	95.3

CQS: 92.2



Color parameters

Color temperature	Color rendering index	Red component	Color fidelity	Color gamut	Color quality scale	Color coordinate cie 1931	Color coordinate cie 1931	Color coordinate	Color coordinate	Color deviation from black body
CCT	CRI	CRI R9	TM30 Rf	TM30 Rg	CQS	x	y	u	v	Δuv
3042 K	95.6	89.2	92.1	102.3	92.2	0.433	0.400	0.250	0.346	-0.0011

TM30 Details

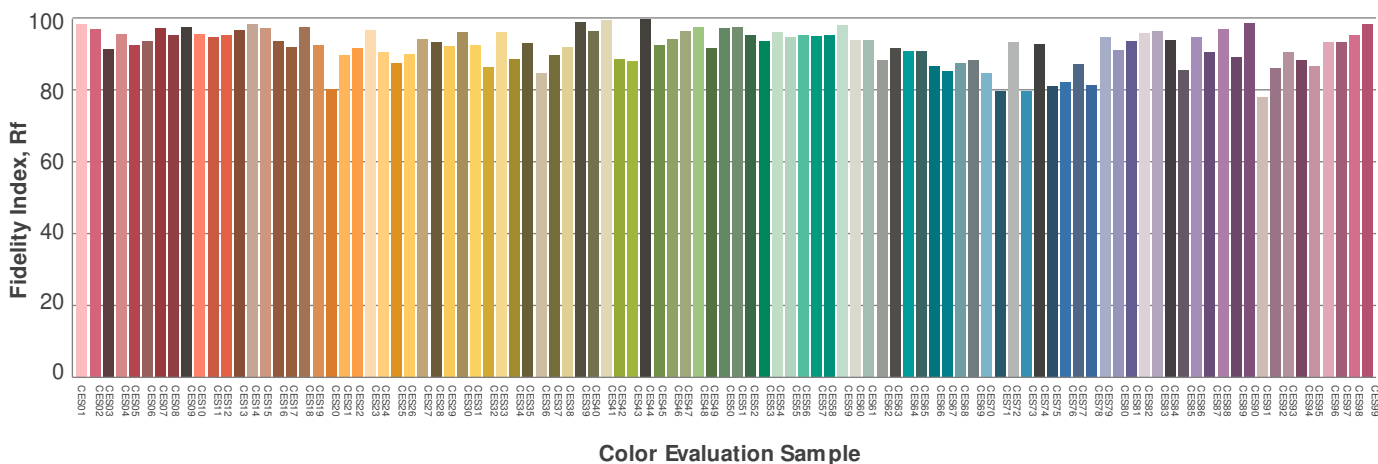
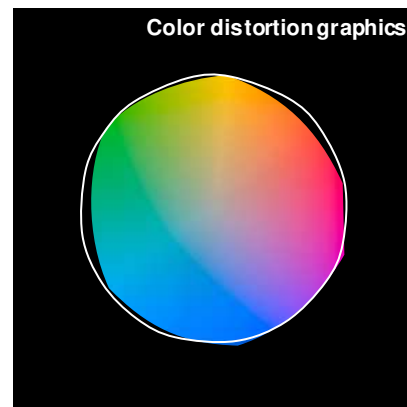
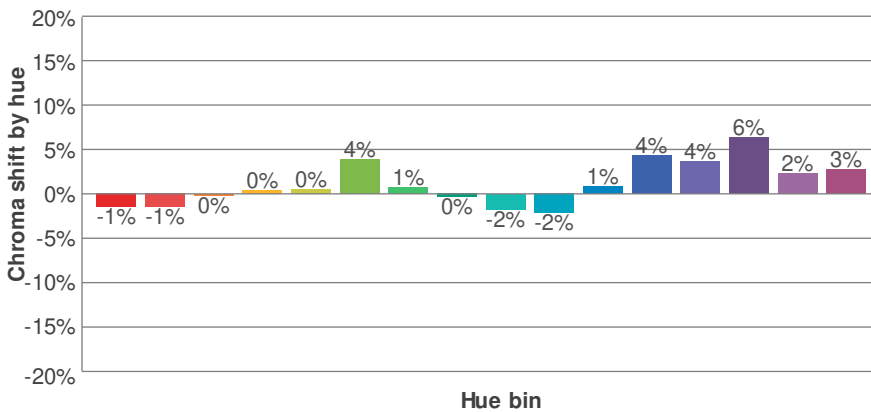
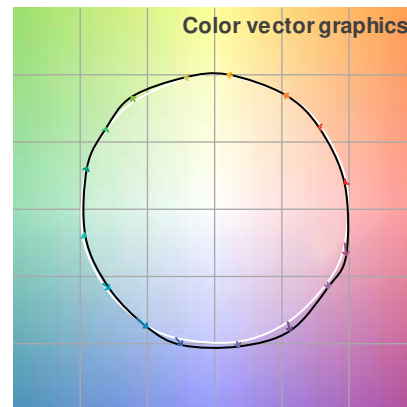
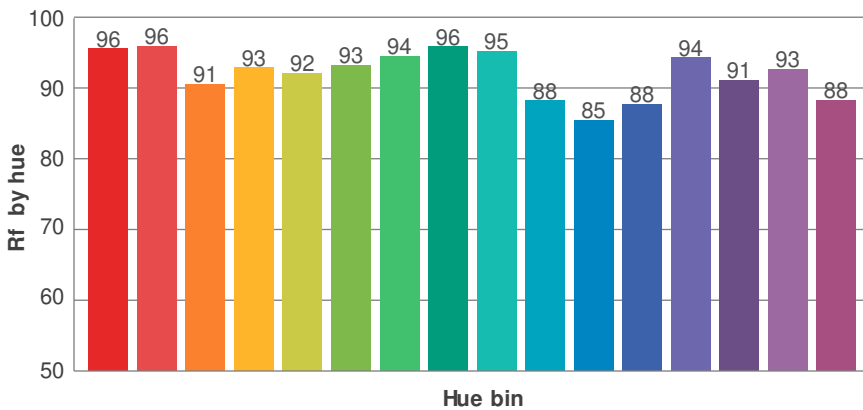
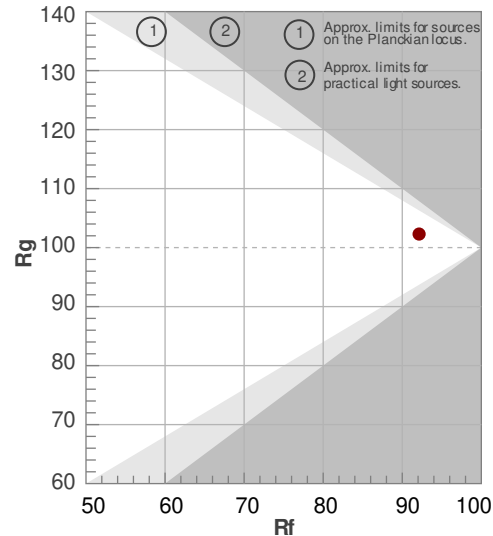
BOXA-DW-WSC-DRY-30-HO-ENC-TL-S1-BW-NA



Rf 92.1
Fidelity index Rf

Rg 102.3
Gammut index Rg

Hue Bin	R _f	Graphic shifts (%)	
		Chroma	Hue
1	96	-1%	-1%
2	96	-1%	1%
3	91	0%	4%
4	93	0%	3%
5	92	0%	3%
6	93	4%	0%
7	94	1%	-2%
8	96	0%	-2%
9	95	-2%	1%
10	88	-2%	6%
11	85	1%	10%
12	88	4%	5%
13	94	4%	1%
14	91	6%	-2%
15	93	2%	-3%
16	88	3%	-8%



Photometric Details



BOXA-DW-WSC-DRY-24-HO-ENC-CL-S1-BW-NA

Product name:	BOXA-DW-WSC-DRY-24-HO-ENC-CL-S1-BW-NA
Date:	9/27/2019
Powering product:	IQ-PH-80-120/24
Output:	207 lm/ft
Peak:	60.4 cd
Power:	2.9 W/ft
PF:	1.0



Light efficiency:



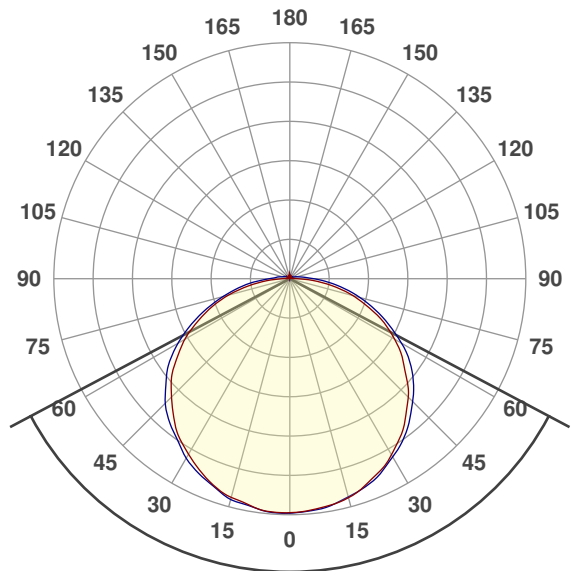
Light quality:



Color temperature:



Beam Angle

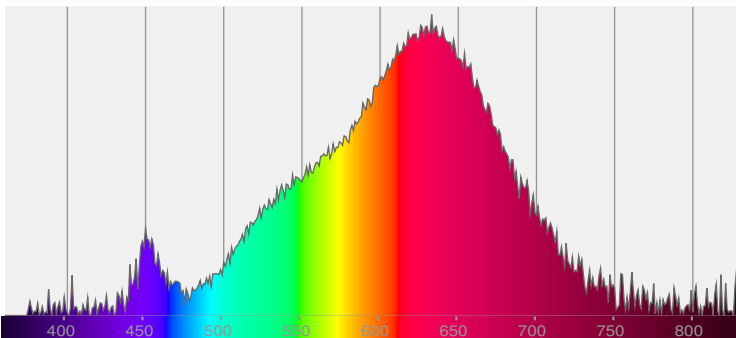


124.1°

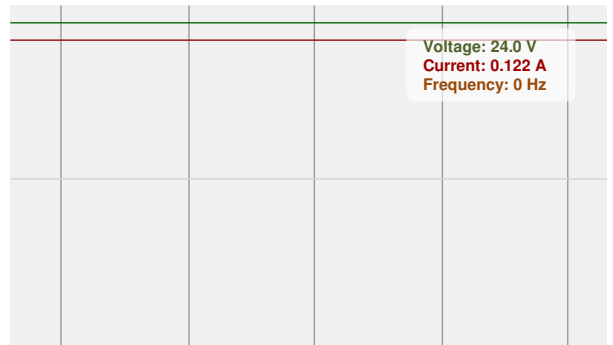
CIE 1931
x: 0.488
y: 0.415



Spectra



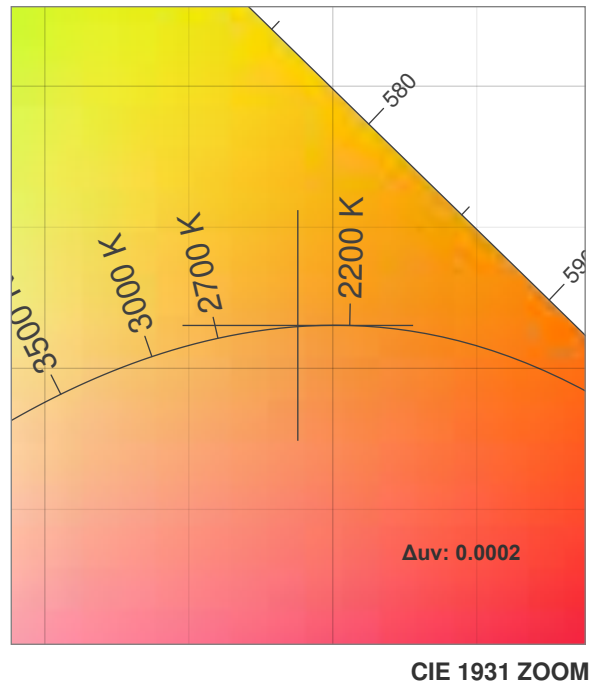
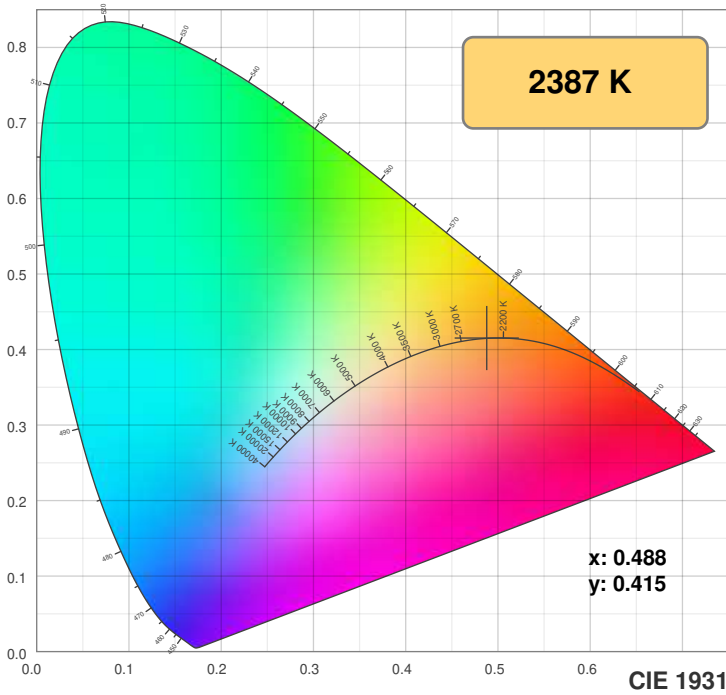
Power



Color Details

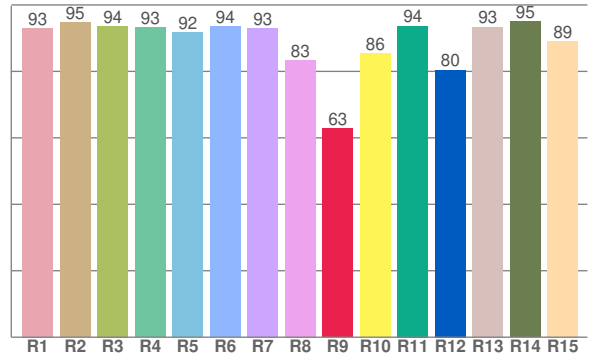
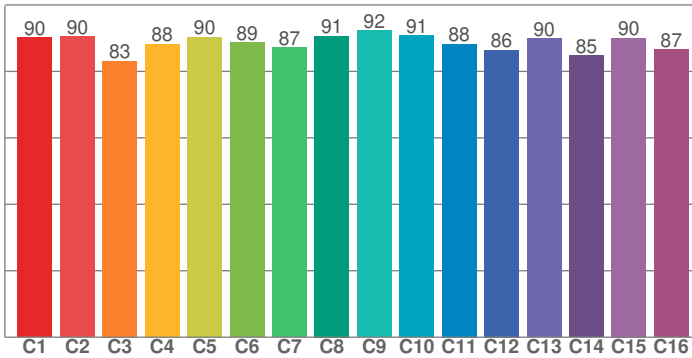


BOXA-DW-WSC-DRY-24-HO-ENC-CL-S1-BW-NA



TM30: 88.9

CRI: 92.0 (R1-R8)



CRI R values, only R1-R8 are used to calculate final CRI value

R1	R2	R3	R4	R5	R6	R7	R8	R9	R10	R11	R12	R13	R14	R15
93.0	94.7	93.6	93.2	91.6	93.5	93.1	83.4	62.8	85.5	93.7	80.5	93.4	94.9	89.1

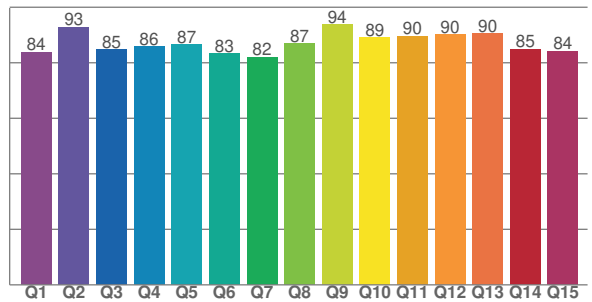
TM30 C values, 16 binned values out of total of 99 C values

C1	C2	C3	C4	C5	C6	C7	C8	C9	C10	C11	C12	C13	C14	C15	C16
90.1	90.5	83.1	88.2	90.3	88.6	87.2	90.7	92.3	90.9	88.3	86.5	89.9	84.7	90.1	86.5

CQS Q values

Q1	Q2	Q3	Q4	Q5	Q6	Q7	Q8	Q9	Q10	Q11	Q12	Q13	Q14	Q15
83.9	92.9	84.7	85.9	86.6	83.2	82.1	86.9	93.8	89.1	89.6	90.1	90.4	85.0	84.2

CQS: 86.5



Color parameters

Color temperature	Color rendering index	Red component	Color fidelity	Color gamut	Color quality scale	Color coordinate cie 1931	Color coordinate cie 1931	Color coordinate	Color coordinate	Color deviation from black body
CCT	CRI	CRI R9	TM30 Rf	TM30 Rg	CQS	x	y	u	v	Δuv
2387 K	92.0	62.8	88.9	102.4	86.5	0.488	0.415	0.279	0.356	0.0002

TM30 Details

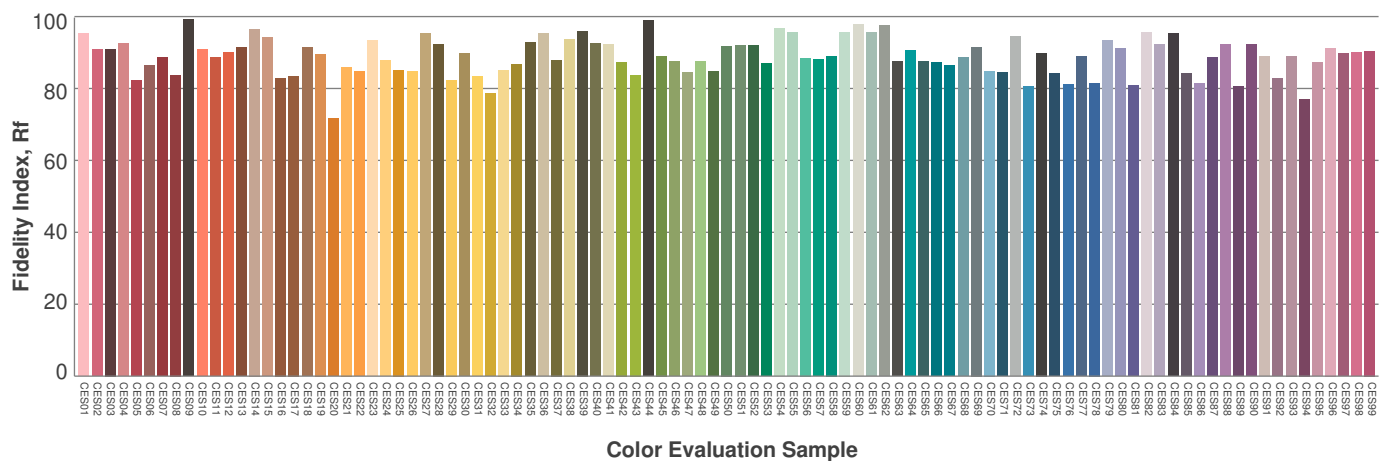
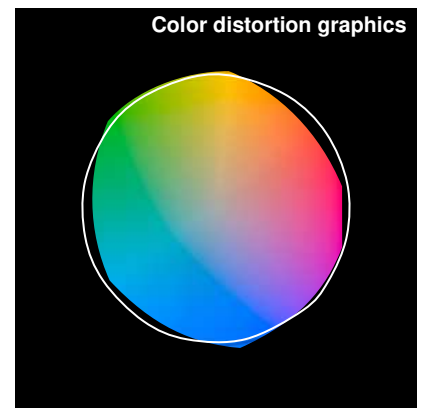
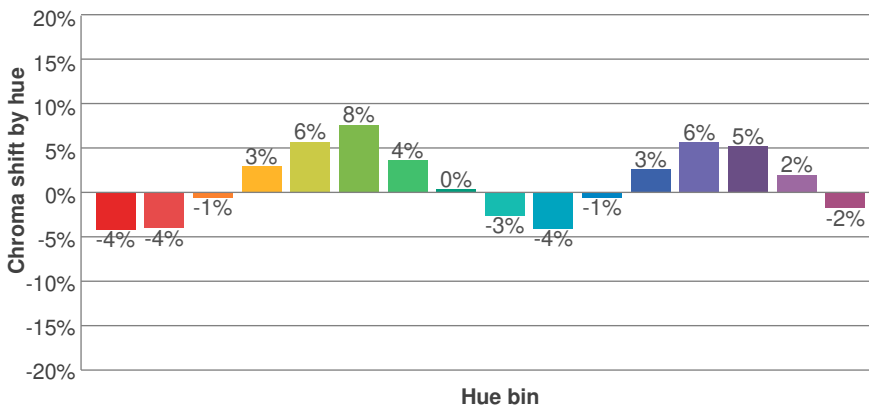
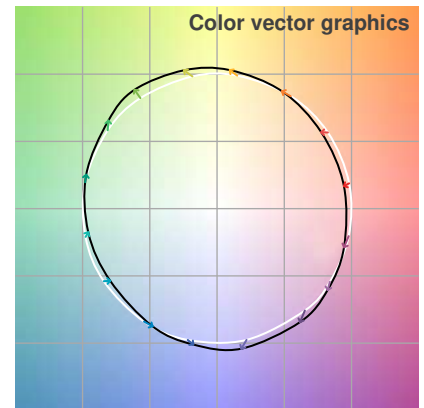
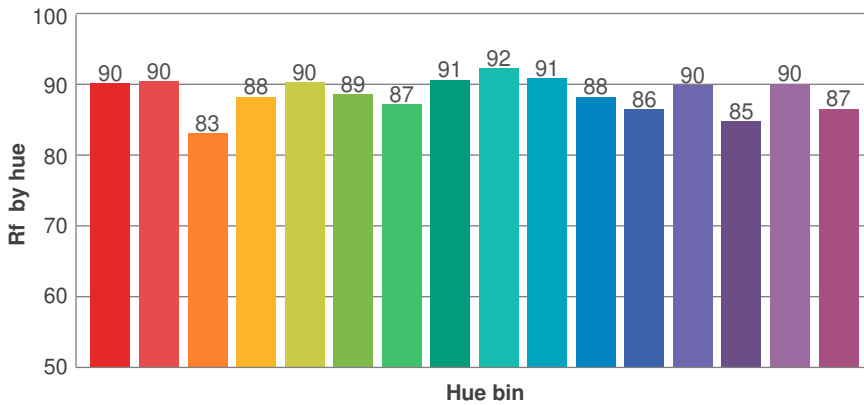
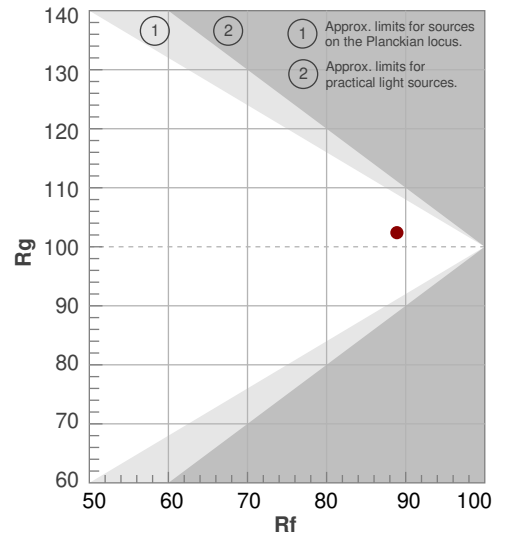


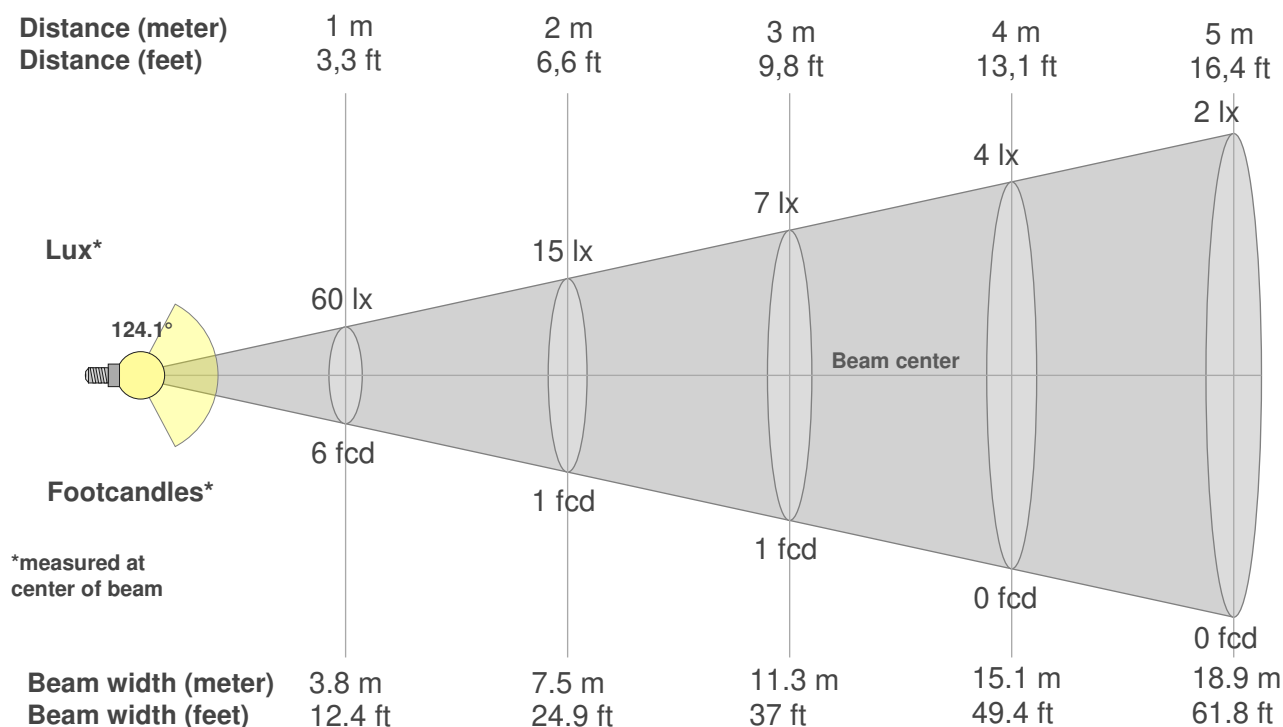
BOXA-DW-WSC-DRY-24-HO-ENC-CL-S1-BW-NA

Rf 88.9
Fidelity index Rf

Rg 102.4
Gammut index Rg

Hue Bin	R _f	Graphic shifts (%)	
		Chroma	Hue
1	90	-4%	-1%
2	90	-4%	3%
3	83	-1%	7%
4	88	3%	6%
5	90	6%	5%
6	89	8%	0%
7	87	4%	-6%
8	91	0%	-6%
9	92	-3%	-3%
10	91	-4%	2%
11	88	-1%	7%
12	86	3%	5%
13	90	6%	-5%
14	85	5%	-8%
15	90	2%	-6%
16	87	-2%	-9%





Beam intensities from 1-20m

1m	2m	3m	4m	5m	6m	7m	8m	9m	10m	11m	12m	13m	14m	15m	16m	17m	18m	19m	20m
3.3ft	6.6ft	9.8ft	13.1ft	16.4ft	19.7ft	23ft	26.2ft	29.5ft	32.8ft	36.1ft	39.4ft	42.7ft	45.9ft	49.2ft	52.5ft	55.8ft	59.1ft	62.3ft	65.6ft
60lx	15lx	7lx	4lx	2lx	2lx	1lx	1lx	1lx	1lx	0lx	0lx	0lx	0lx	0lx	0lx	0lx	0lx	0lx	0lx
5.6fcd	1.4fcd	0.6fcd	0.4fcd	0.2fcd	0.2fcd	0.1fcd	0.1fcd	0.1fcd	0.1fcd	0fcd	0fcd	0fcd	0fcd	0fcd	0fcd	0fcd	0fcd	0fcd	0fcd

Intensities in 0° c-plane

0°	5°	10°	15°	20°	25°	30°	35°	40°	45°	50°	55°	60°	65°	70°	75°	80°	85°	90°	95°
60.3	59.8	59.2	58.3	56.7	54.7	52.3	49.6	46.4	43.1	39.2	35.3	31.2	26.7	21.7	16.8	11.7	6.6	2.3	0.6
100%	99%	98%	97%	94%	91%	87%	82%	77%	71%	65%	59%	52%	44%	36%	28%	19%	11%	4%	1%

Intensities in 90° c-plane

0°	5°	10°	15°	20°	25°	30°	35°	40°	45°	50°	55°	60°	65°	70°	75°	80°	85°	90°	95°
60.3	60.0	59.4	58.2	57.0	55.3	53.0	50.7	47.9	44.7	41.5	37.8	33.2	28.3	23.4	18.7	14.1	9.9	6.3	4.0
100%	100%	99%	96%	94%	92%	88%	84%	79%	74%	69%	63%	55%	47%	39%	31%	23%	16%	10%	7%

Intensities in 180° c-plane

0°	5°	10°	15°	20°	25°	30°	35°	40°	45°	50°	55°	60°	65°	70°	75°	80°	85°	90°	95°
60.3	60.1	59.3	58.3	56.8	54.6	52.2	49.7	46.5	43.1	39.7	35.4	31.2	26.3	21.5	16.4	11.0	6.0	2.0	0.6
100%	100%	98%	97%	94%	91%	87%	82%	77%	71%	66%	59%	52%	44%	36%	27%	18%	10%	3%	1%

Intensities in 270° c-plane

0°	5°	10°	15°	20°	25°	30°	35°	40°	45°	50°	55°	60°	65°	70°	75°	80°	85°	90°	95°
60.3	60.3	59.4	58.8	57.0	55.4	53.4	50.6	48.2	45.3	41.6	37.9	33.2	28.1	22.9	17.9	13.3	9.1	5.5	3.6
100%	100%	99%	98%	95%	92%	89%	84%	80%	75%	69%	63%	55%	47%	38%	30%	22%	15%	9%	6%

Beam angle 50%	Field angle 10%	Cutoff angle 2,5%	Intensity ratio in 120° cone	Intensity ratio in 90° cone
124.1°	174.9°	202.2°	70.5%	46.4%

Photometric Details



BOXA-DW-WSC-DRY-30-HO-ENC-CL-S1-BW-NA

Product name:	BOXA-DW-WSC-DRY-30-HO-ENC-CL-S1-BW-NA
Date:	9/27/2019
Powering product:	<u>IQ-PH-80-120/24</u>
Output:	213 lm/ft
Peak:	62.5 cd
Power:	2.9 W/ft
PF:	1.0



Light efficiency:



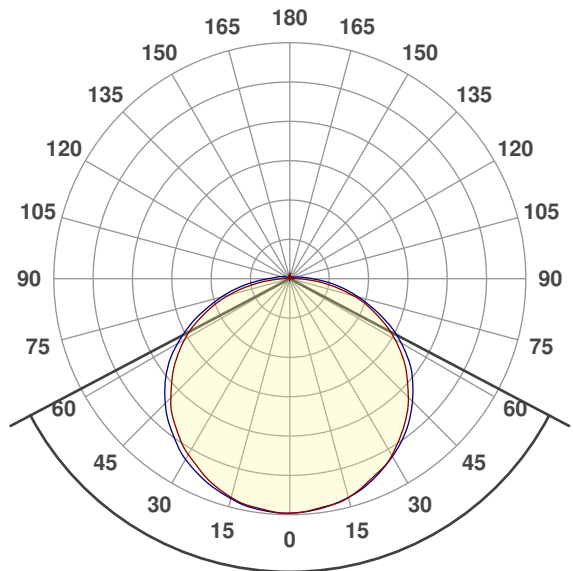
Light quality:



Color temperature:



Beam Angle

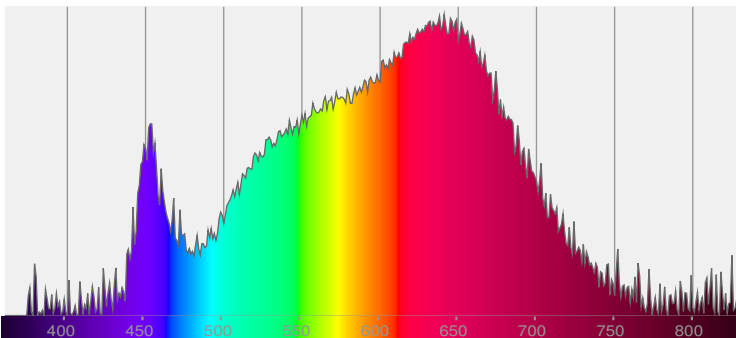


124.4°

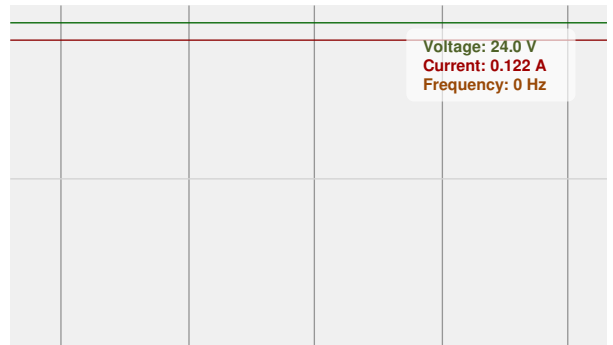
CIE 1931
x: 0.427
y: 0.398



Spectra



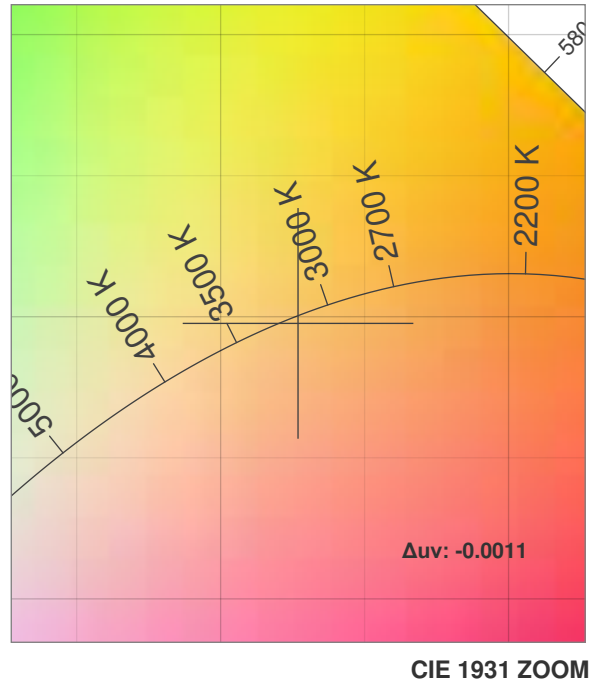
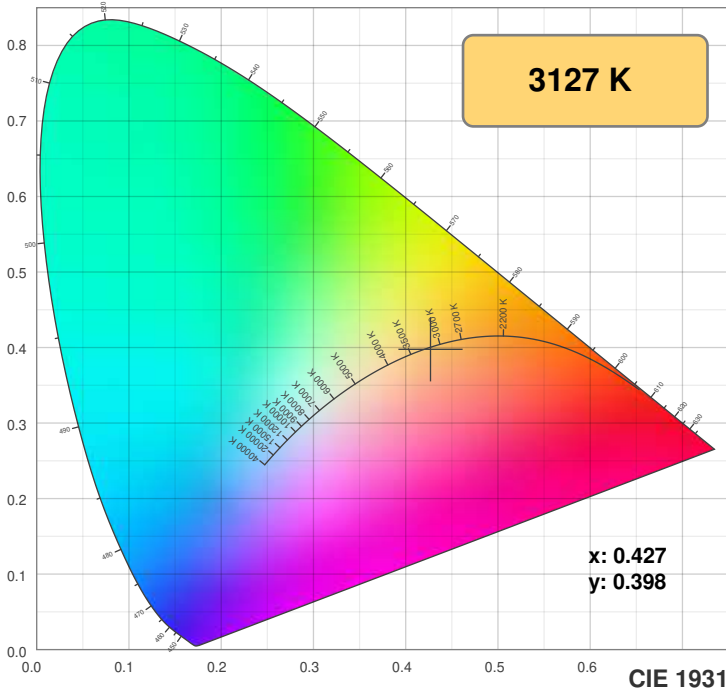
Power



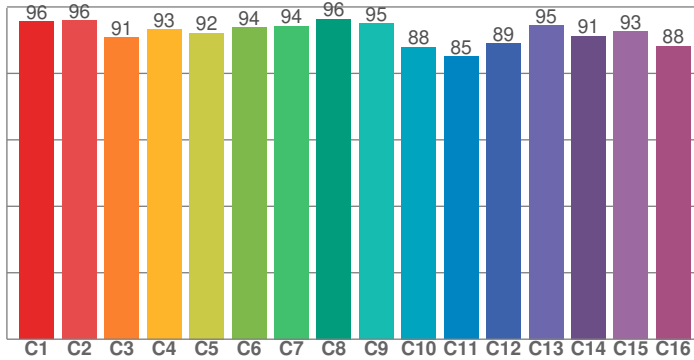
Color Details



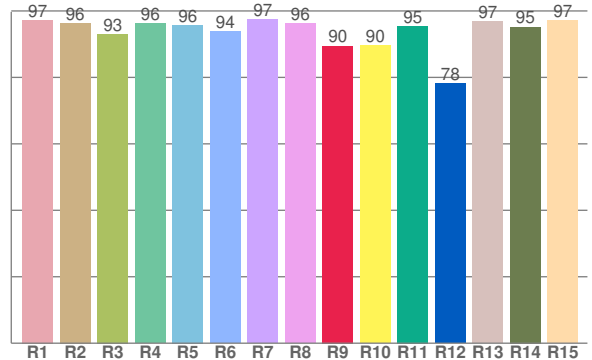
BOXA-DW-WSC-DRY-30-HO-ENC-CL-S1-BW-NA



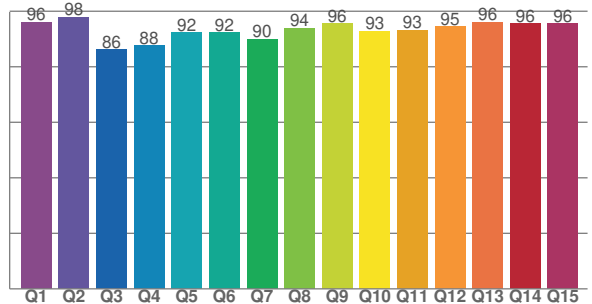
TM30: 92.2



CRI: 95.8 (R1-R8)



CQS: 92.4



CRI R values, only R1-R8 are used to calculate final CRI value

R1	R2	R3	R4	R5	R6	R7	R8	R9	R10	R11	R12	R13	R14	R15
97.2	96.4	93.1	96.2	95.8	93.8	97.4	96.2	89.5	89.6	95.4	78.2	96.9	95.2	97.2

TM30 C values, 16 binned values out of total of 99 C values

C1	C2	C3	C4	C5	C6	C7	C8	C9	C10	C11	C12	C13	C14	C15	C16
95.6	95.9	90.9	93.1	92.1	93.8	94.3	96.3	95.0	88.0	85.1	89.0	94.5	91.2	92.7	88.2

CQS Q values

Q1	Q2	Q3	Q4	Q5	Q6	Q7	Q8	Q9	Q10	Q11	Q12	Q13	Q14	Q15
96.1	97.8	86.2	87.6	92.3	92.3	90.0	94.0	95.5	92.9	93.2	94.5	96.0	95.6	95.6

Color parameters

Color temperature	Color rendering index	Red component	Color fidelity	Color gamut	Color quality scale	Color coordinate cie 1931	Color coordinate cie 1931	Color coordinate	Color coordinate	Color deviation from black body
CCT	CRI	CRI R9	TM30 Rf	TM30 Rg	CQS	x	y	u	v	Δuv
3127 K	95.8	89.5	92.2	102.2	92.4	0.427	0.398	0.247	0.345	-0.0011

TM30 Details

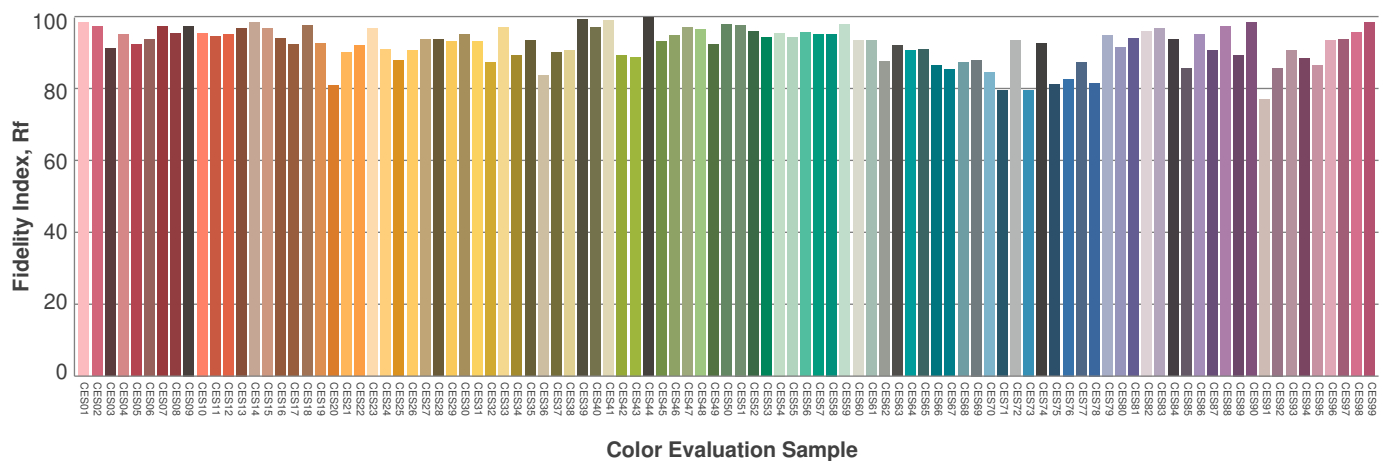
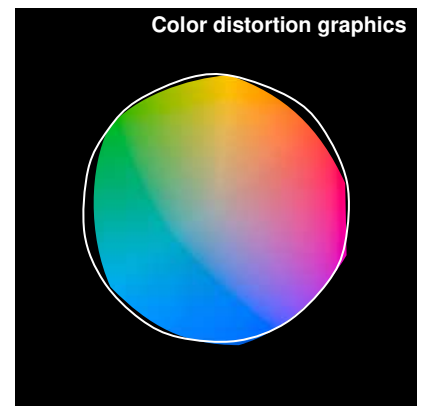
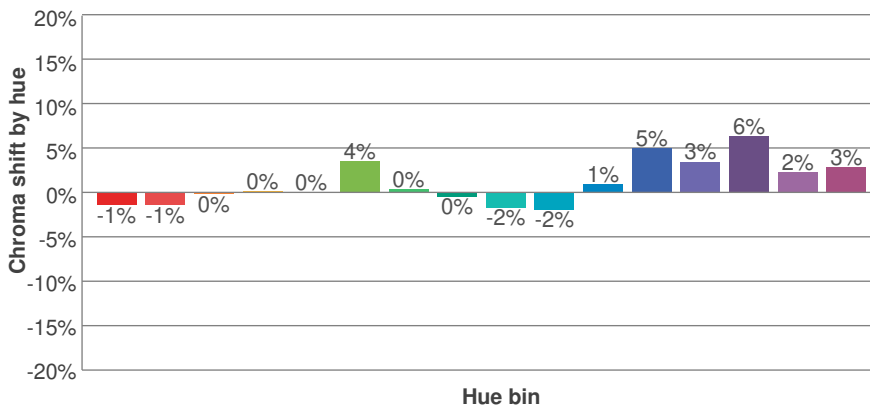
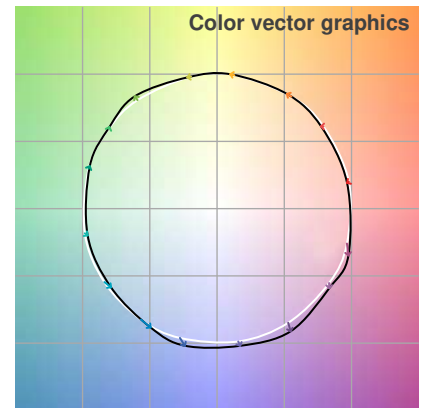
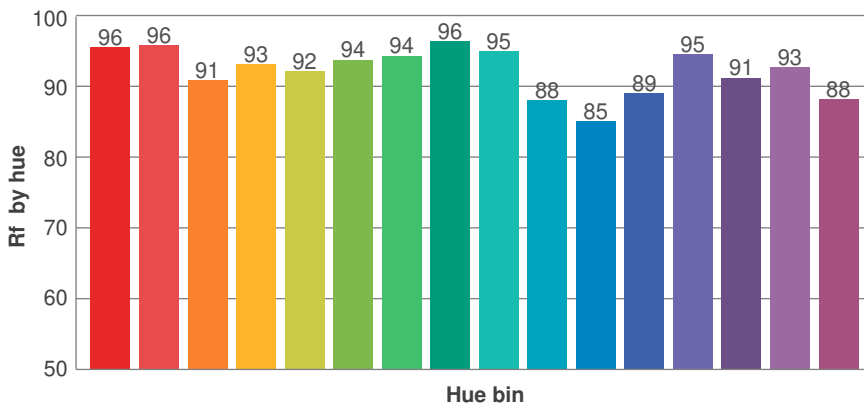
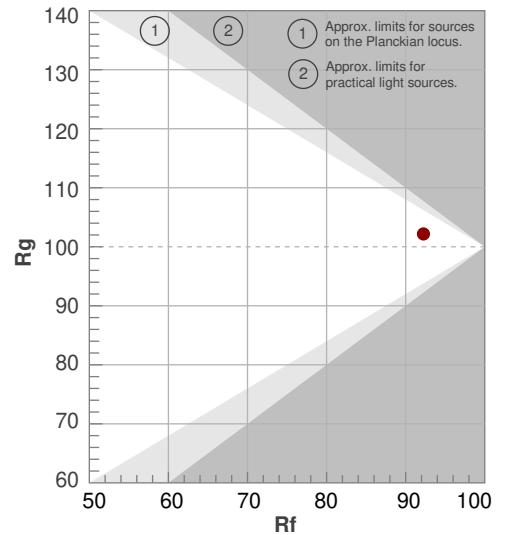


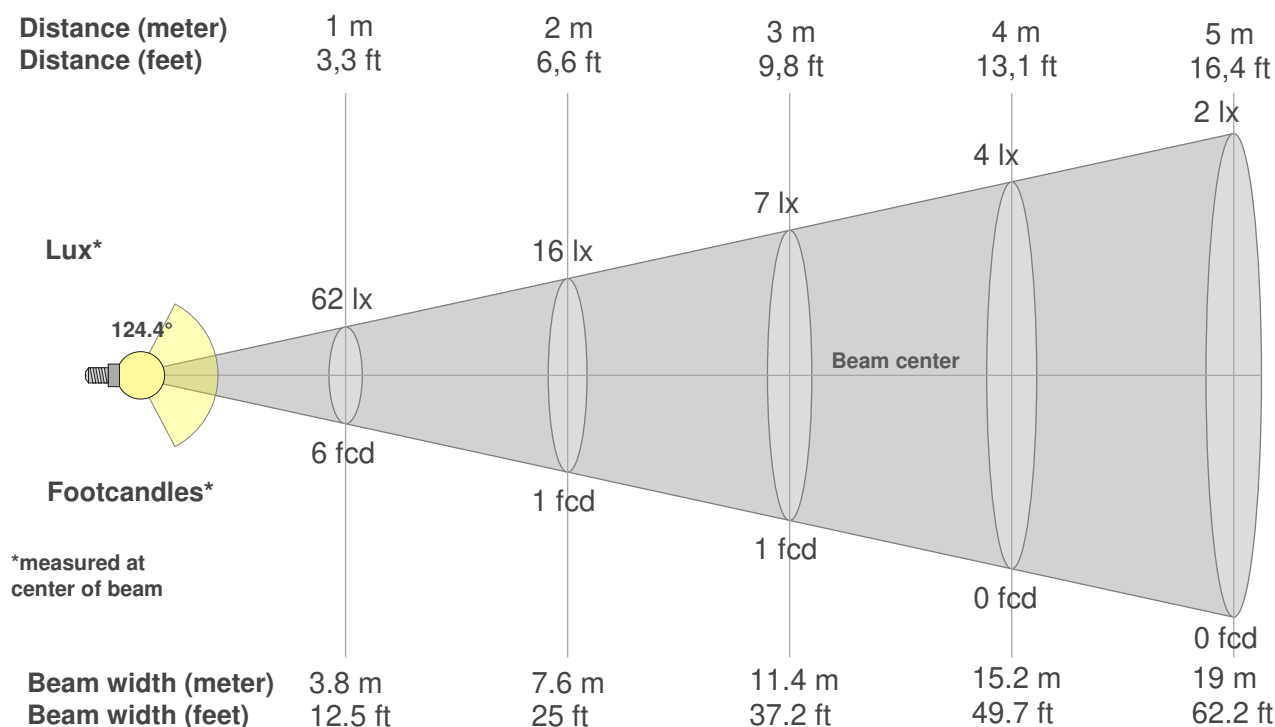
BOXA-DW-WSC-DRY-30-HO-ENC-CL-S1-BW-NA

Rf 92.2
Fidelity index Rf

Rg 102.2
Gamut index Rg

Hue Bin	R _f	Graphic shifts (%)	
		Chroma	Hue
1	96	-1%	-1%
2	96	-1%	1%
3	91	0%	4%
4	93	0%	3%
5	92	0%	3%
6	94	4%	0%
7	94	0%	-1%
8	96	0%	-2%
9	95	-2%	2%
10	88	-2%	6%
11	85	1%	9%
12	89	5%	5%
13	95	3%	1%
14	91	6%	-2%
15	93	2%	-3%
16	88	3%	-8%





Beam intensities from 1-20m

1m	2m	3m	4m	5m	6m	7m	8m	9m	10m	11m	12m	13m	14m	15m	16m	17m	18m	19m	20m
3.3ft	6.6ft	9.8ft	13.1ft	16.4ft	19.7ft	23ft	26.2ft	29.5ft	32.8ft	36.1ft	39.4ft	42.7ft	45.9ft	49.2ft	52.5ft	55.8ft	59.1ft	62.3ft	65.6ft
62lx	16lx	7lx	4lx	2lx	2lx	1lx	1lx	1lx	1lx	1lx	0lx	0lx	0lx	0lx	0lx	0lx	0lx	0lx	0lx
5.8fcd	1.4fcd	0.6fcd	0.4fcd	0.2fcd	0.2fcd	0.1fcd	0.1fcd	0.1fcd	0.1fcd	0fcd	0fcd	0fcd	0fcd	0fcd	0fcd	0fcd	0fcd	0fcd	0fcd

Intensities in 0° c-plane

0°	5°	10°	15°	20°	25°	30°	35°	40°	45°	50°	55°	60°	65°	70°	75°	80°	85°	90°	95°
62.4	62.0	61.3	60.3	58.5	56.5	54.3	51.4	48.2	44.7	40.8	36.8	32.4	27.6	22.7	17.6	11.9	6.8	2.7	0.6
100%	99%	98%	97%	94%	91%	87%	82%	77%	72%	65%	59%	52%	44%	36%	28%	19%	11%	4%	1%

Intensities in 90° c-plane

0°	5°	10°	15°	20°	25°	30°	35°	40°	45°	50°	55°	60°	65°	70°	75°	80°	85°	90°	95°
62.4	62.1	61.4	60.3	58.8	56.8	54.7	52.3	49.4	46.2	42.7	38.9	34.3	29.4	24.0	19.0	14.3	10.0	6.2	3.9
100%	99%	98%	97%	94%	91%	88%	84%	79%	74%	68%	62%	55%	47%	39%	30%	23%	16%	10%	6%

Intensities in 180° c-plane

0°	5°	10°	15°	20°	25°	30°	35°	40°	45°	50°	55°	60°	65°	70°	75°	80°	85°	90°	95°
62.4	62.1	61.4	60.3	58.6	56.4	54.1	51.4	48.4	44.8	40.9	36.8	32.3	27.4	22.2	16.7	11.2	6.0	2.1	0.5
100%	99%	98%	97%	94%	90%	87%	82%	78%	72%	66%	59%	52%	44%	36%	27%	18%	10%	3%	1%

Intensities in 270° c-plane

0°	5°	10°	15°	20°	25°	30°	35°	40°	45°	50°	55°	60°	65°	70°	75°	80°	85°	90°	95°
62.4	62.3	61.7	60.6	59.3	57.5	55.5	53.0	50.1	46.9	43.3	39.3	34.5	29.4	24.0	18.9	14.1	9.6	6.0	3.9
100%	100%	99%	97%	95%	92%	89%	85%	80%	75%	69%	63%	55%	47%	38%	30%	23%	15%	10%	6%

Beam angle 50%	Field angle 10%	Cutoff angle 2,5%	Intensity ratio in 120° cone	Intensity ratio in 90° cone
124.4°	174.9°	201.2°	70.9%	46.6%