

# Photometric Details

KURV-DW-WSC-DRY-24-HO-ENC-CL-S1-BW-NA



**Product name:**

KURV-DW-WSC-DRY-24-HO-ENC-CL-S1-BW-NA

**Date:**

1/18/2019

**Powering product:**

IQ-PH-80-120/24

**Output:** 177 lm/ft

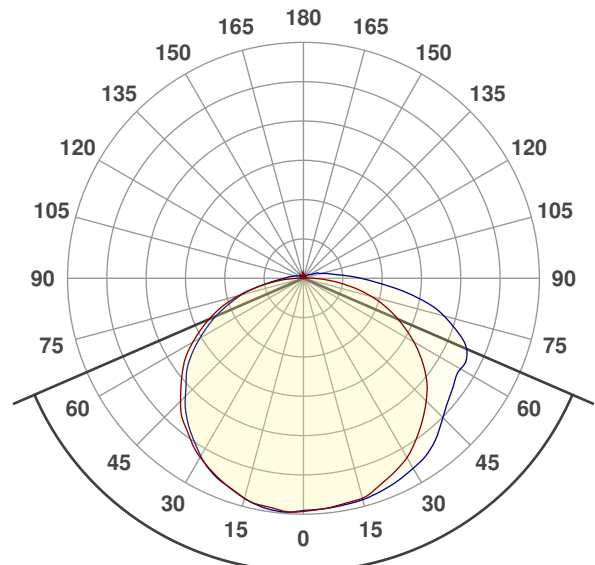
**Peak:** 46.8 cd

**Power:** 2.9 W/ft

**PF:** 1.0



## Beam Angle



**133.2°**

CIE 1931  
x: 0.488  
y: 0.411



## Light efficiency:



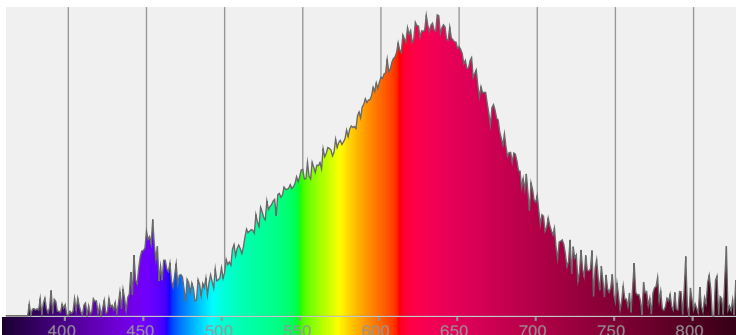
## Light quality:



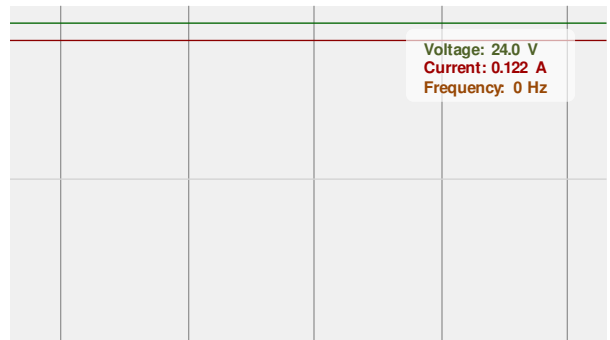
## Color temperature:



## Spectra

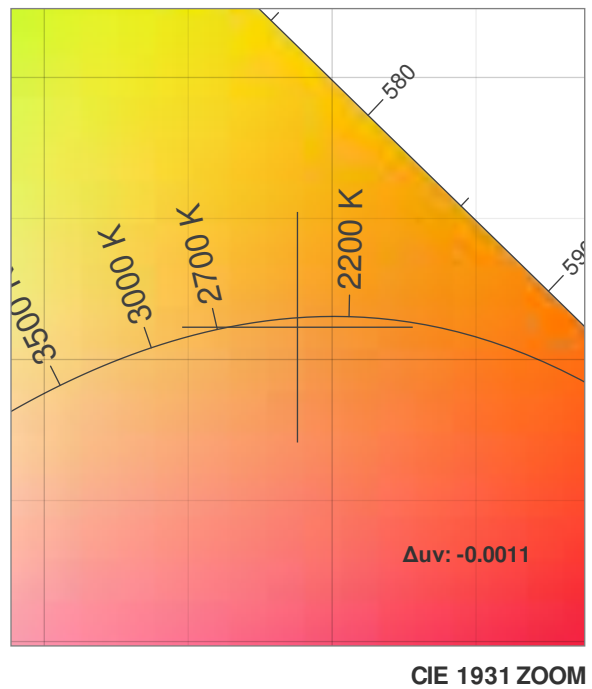
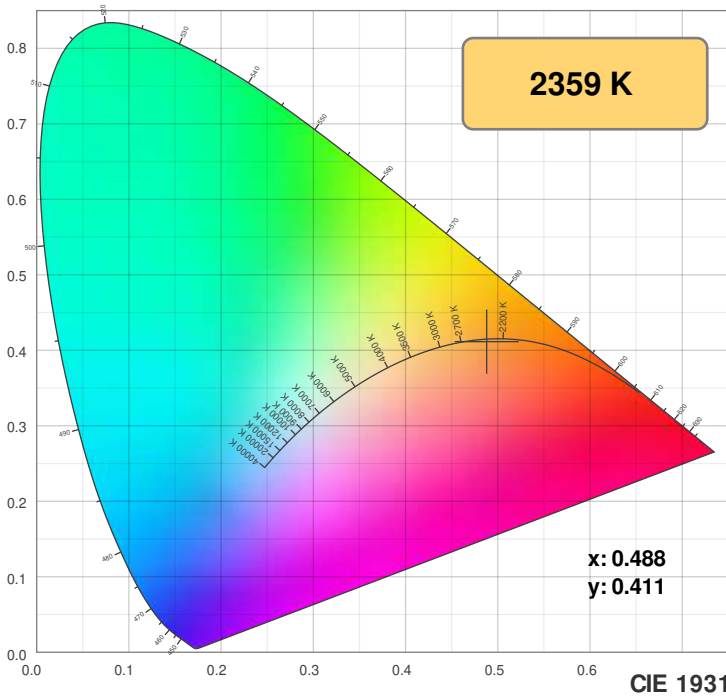


## Power



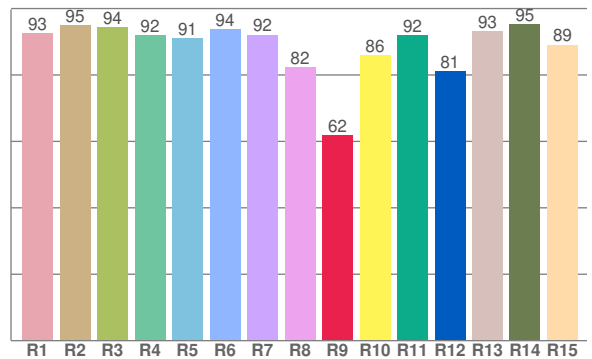
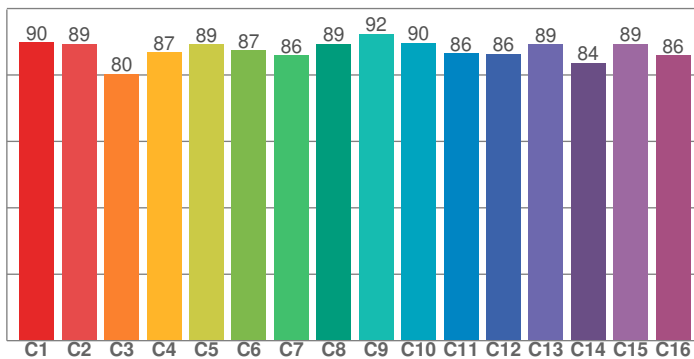
# Color Details

KURV-DW-WSC-DRY-24-HO-ENC-CL-S1-BW-NA



**TM30: 87.8**

**CRI: 91.6 (R1-R8)**



CRI R values, only R1-R8 are used to calculate final CRI value

R1	R2	R3	R4	R5	R6	R7	R8	R9	R10	R11	R12	R13	R14	R15
92.6	95.0	94.3	92.0	91.2	93.7	92.1	82.4	61.9	85.9	91.9	81.0	93.2	95.3	89.1

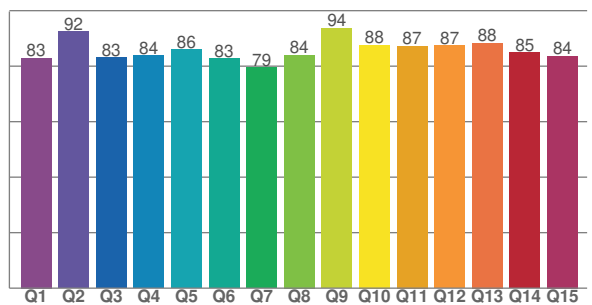
TM30 C values, 16 binned values out of total of 99 C values

C1	C2	C3	C4	C5	C6	C7	C8	C9	C10	C11	C12	C13	C14	C15	C16
89.8	89.3	80.3	86.8	89.2	87.4	85.9	89.3	92.4	89.7	86.4	86.3	89.1	83.7	89.3	85.8

CQS Q values

Q1	Q2	Q3	Q4	Q5	Q6	Q7	Q8	Q9	Q10	Q11	Q12	Q13	Q14	Q15
83.0	92.4	83.2	83.9	86.0	82.7	79.4	84.0	93.6	87.7	87.3	87.4	88.4	84.9	83.7

**CQS: 85.1**



## Color parameters

Color temperature	Color rendering index	Red component	Color fidelity	Color gamut	Color quality scale	Color coordinate cie 1931	Color coordinate cie 1931	Color coordinate	Color coordinate	Color deviation from black body
CCT	CRI	CRI R9	TM30 Rf	TM30 Rg	CQS	x	y	u	v	Δuv
2359 K	91.6	61.9	87.8	103.2	85.1	0.488	0.411	0.280	0.355	-0.0011

# TM30 Details

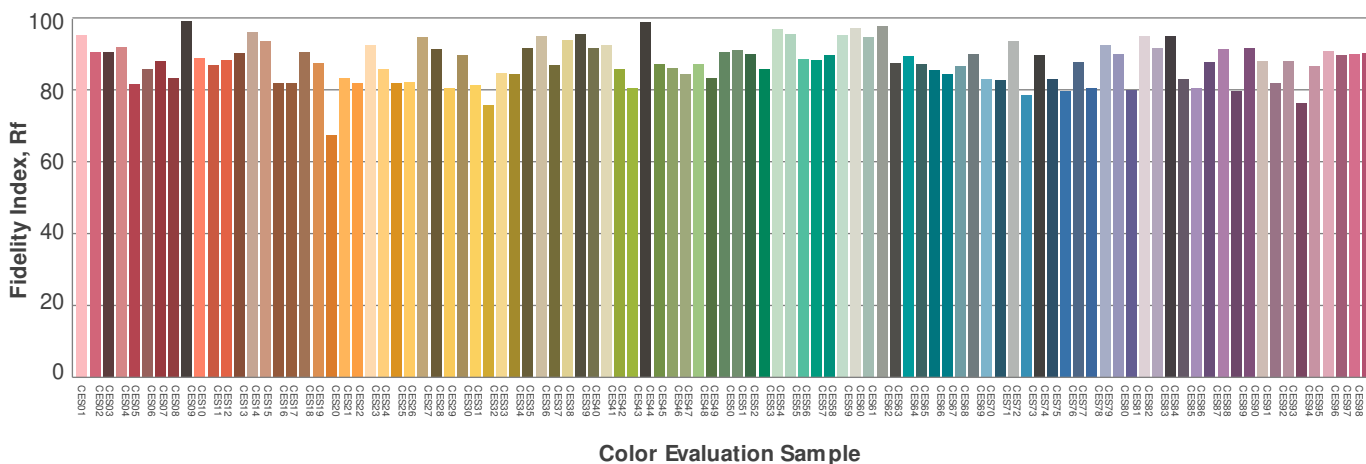
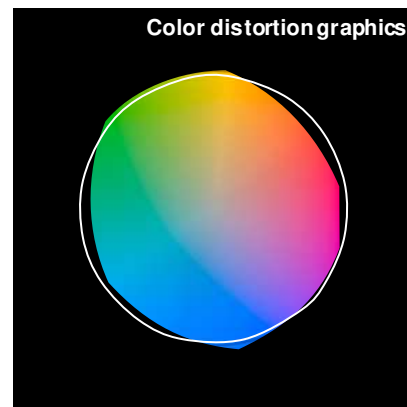
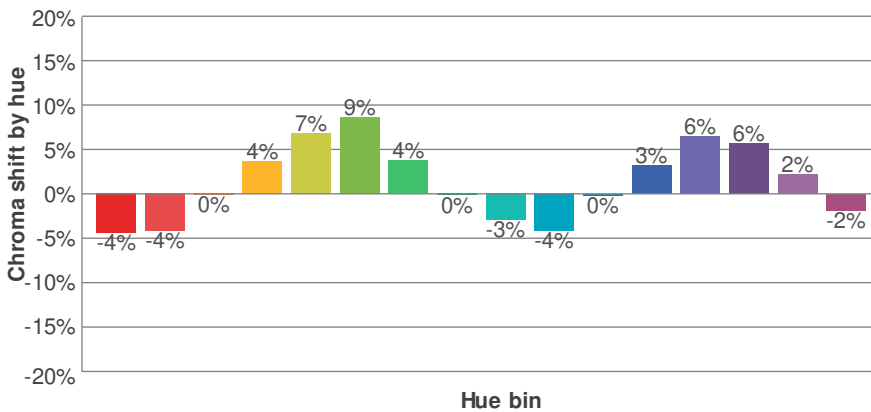
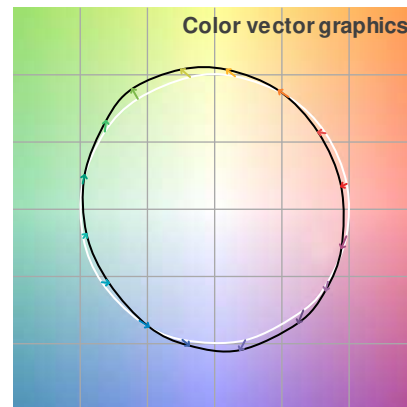
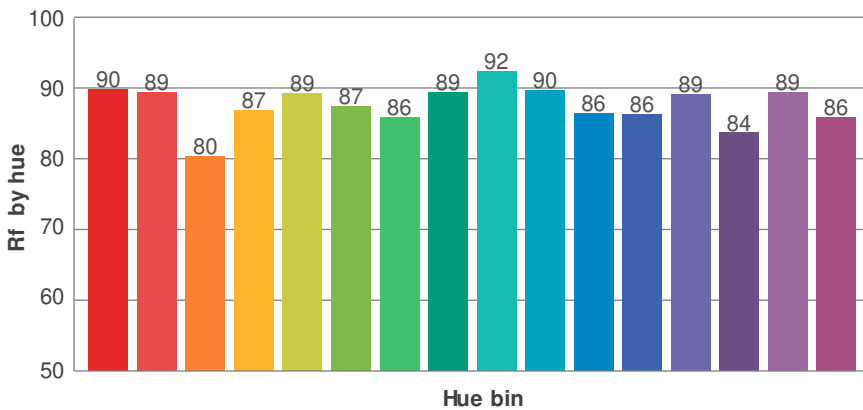
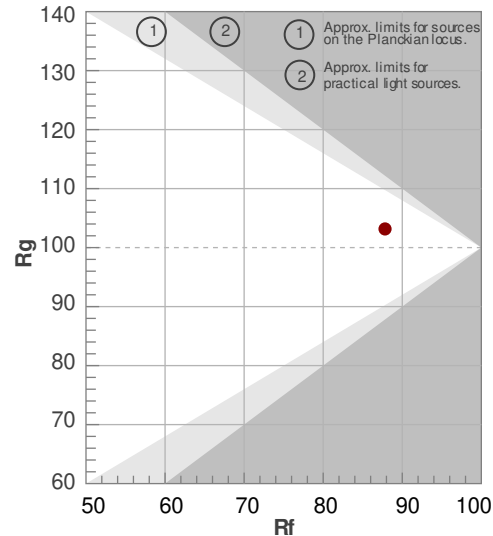
KURV-DW-WSC-DRY-24-HO-ENC-CL-S1-BW-NA



**Rf 87.8**  
Fidelity index Rf

**Rg 103.2**  
Gammut index Rg

Hue Bin	R <sub>f</sub>	Graphic shifts (%)	
		Chroma	Hue
1	90	-4%	-1%
2	89	-4%	4%
3	80	0%	9%
4	87	4%	7%
5	89	7%	5%
6	87	9%	-1%
7	86	4%	-7%
8	89	0%	-6%
9	92	-3%	-2%
10	90	-4%	3%
11	86	0%	8%
12	86	3%	6%
13	89	6%	-5%
14	84	6%	-8%
15	89	2%	-6%
16	86	-2%	-9%



# Photometric Details

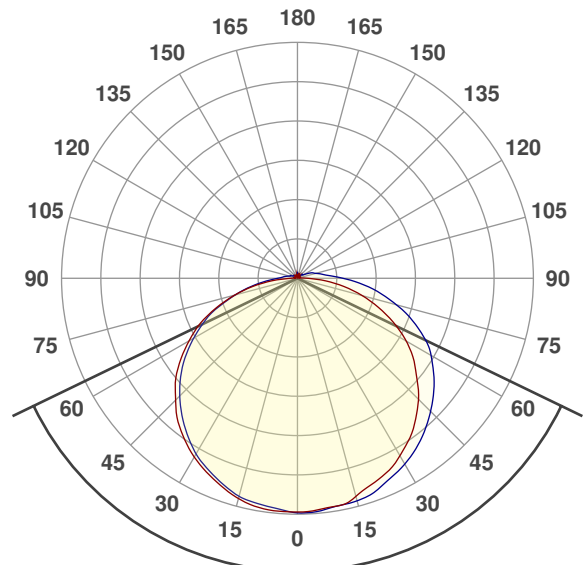
KURV-DW-WSC-DRY-24-HO-ENC-TL-S1-BW-NA



<b>Product name:</b> KURV-DW-WSC-DRY-24-HO-ENC-TL-S1-BW-NA
<b>Date:</b> 1/18/2019
<b>Powering product:</b> IQ-PH-80-120/24
<b>Output:</b> 173 lm/ft
<b>Peak:</b> 48.0 cd
<b>Power:</b> 2.9 W/ft
<b>PF:</b> 1.0



## Beam Angle



128.4°

CIE 1931  
x: 0.486  
y: 0.410



## Light efficiency:



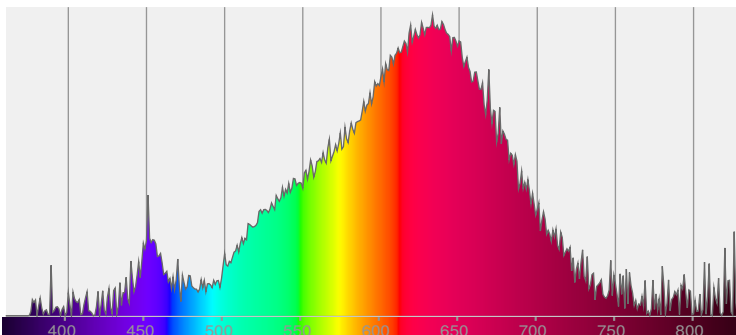
## Light quality:



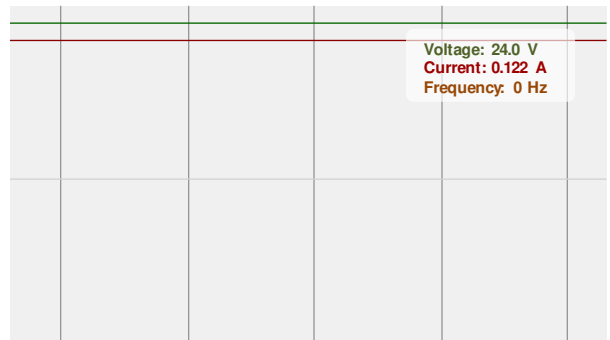
## Color temperature:



## Spectra

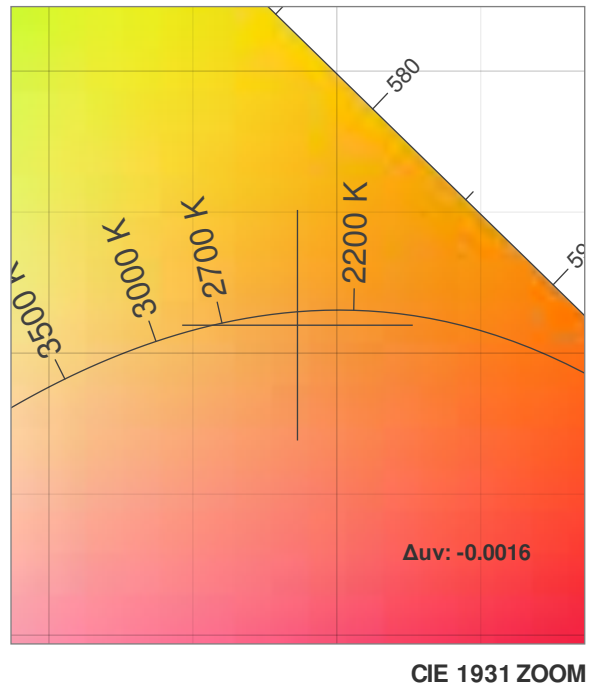
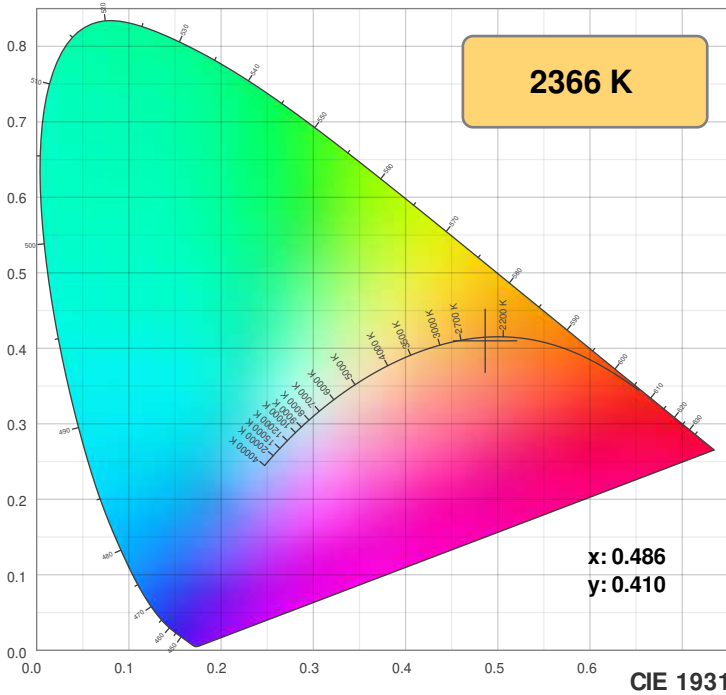


## Power



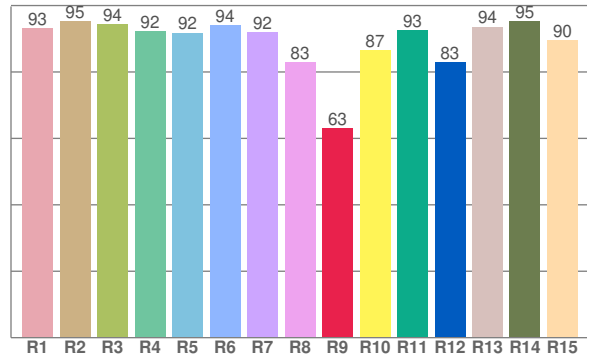
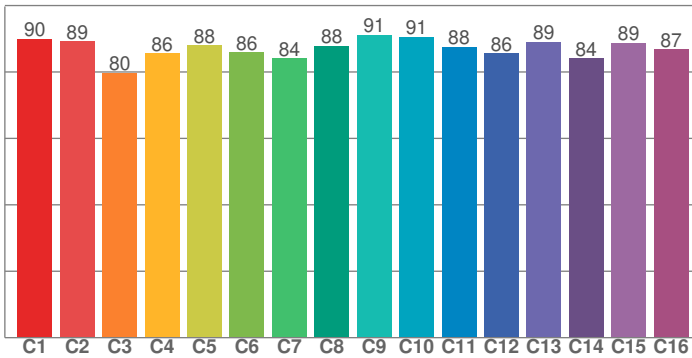
# Color Details

KURV-DW-WSC-DRY-24-HO-ENC-TL-S1-BW-NA



**TM30: 87.5**

**CRI: 92.0 (R1-R8)**



CRI R values, only R1-R8 are used to calculate final CRI value

R1	R2	R3	R4	R5	R6	R7	R8	R9	R10	R11	R12	R13	R14	R15
93.1	95.2	94.4	92.4	91.8	94.1	92.0	82.9	63.1	86.6	92.6	82.9	93.6	95.4	89.5

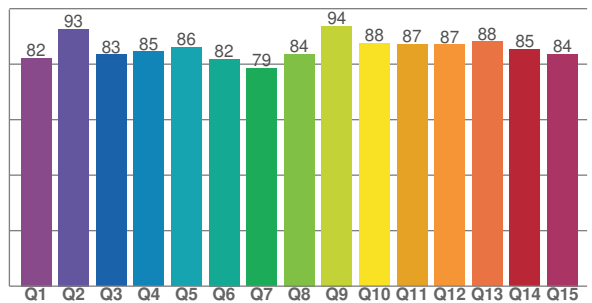
TM30 C values, 16 binned values out of total of 99 C values

C1	C2	C3	C4	C5	C6	C7	C8	C9	C10	C11	C12	C13	C14	C15	C16
89.9	89.2	79.7	85.6	87.9	85.9	84.0	87.8	91.2	90.6	87.6	85.5	89.1	84.1	88.8	86.7

CQS Q values

Q1	Q2	Q3	Q4	Q5	Q6	Q7	Q8	Q9	Q10	Q11	Q12	Q13	Q14	Q15
82.2	92.7	83.4	84.6	86.1	81.9	78.5	83.6	93.8	87.5	87.1	87.1	88.1	85.4	83.7

**CQS: 84.9**



## Color parameters

Color temperature	Color rendering index	Red component	Color fidelity	Color gamut	Color quality scale	Color coordinate cie 1931	Color coordinate cie 1931	Color coordinate	Color coordinate	Color deviation from black body
CCT	CRI	CRI R9	TM30 Rf	TM30 Rg	CQS	x	y	u	v	$\Delta uv$
2366 K	92.0	63.1	87.5	103.7	84.9	0.486	0.410	0.280	0.354	-0.0016

# TM30 Details

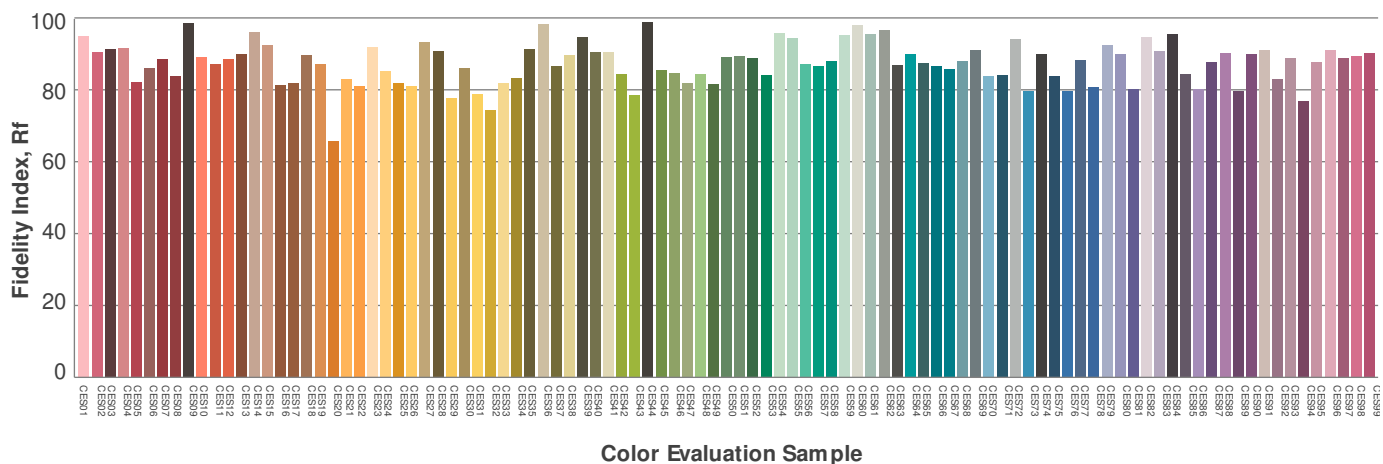
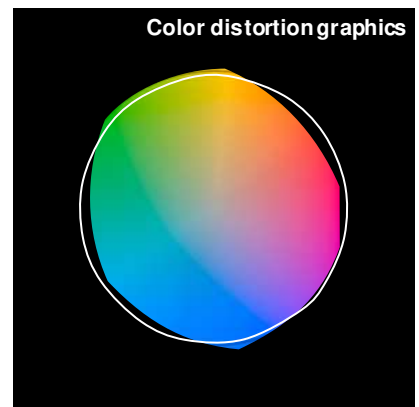
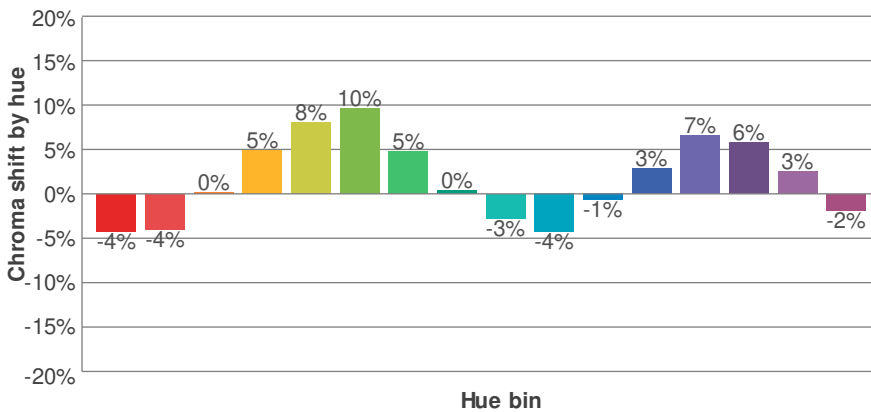
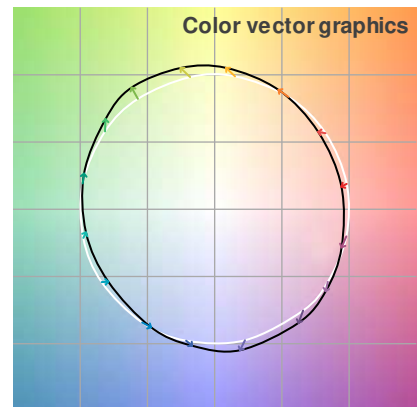
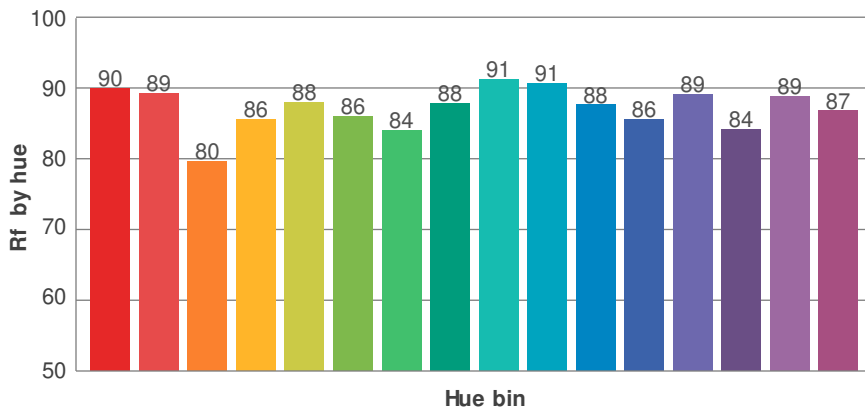
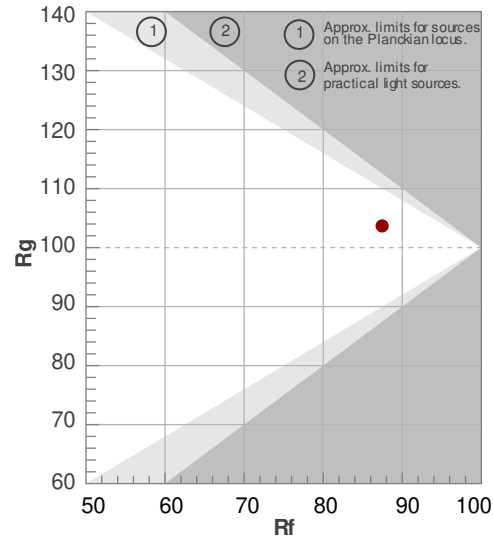
KURV-DW-WSC-DRY-24-HO-ENC-TL-S1-BW-NA



**Rf 87.5**  
Fidelity index Rf

**Rg 103.7**  
Gammut index Rg

Hue Bin	R <sub>f</sub>	Graphic shifts (%)	
		Chroma	Hue
1	90	-4%	-1%
2	89	-4%	4%
3	80	0%	9%
4	86	5%	8%
5	88	8%	6%
6	86	10%	-1%
7	84	5%	-8%
8	88	0%	-7%
9	91	-3%	-4%
10	91	-4%	2%
11	88	-1%	8%
12	86	3%	5%
13	89	7%	-5%
14	84	6%	-8%
15	89	3%	-7%
16	87	-2%	-9%



# Photometric Details

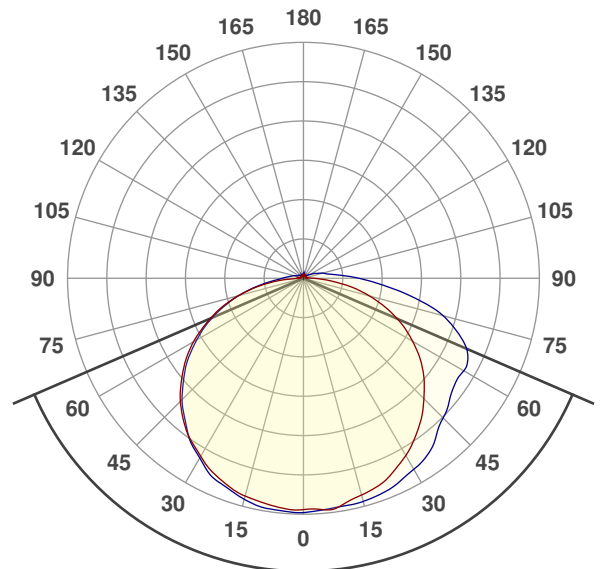
KURV-DW-WSC-DRY-30-HO-ENC-CL-S1-BW-NA



<b>Product name:</b>	
KURV-DW-WSC-DRY-30-HO-ENC-CL-S1-BW-NA	
<b>Date:</b>	
1/18/2019	
<b>Powering product:</b>	
IQ-PH-80-120/24	
<b>Output:</b>	187 lm/ft
<b>Peak:</b>	49.1 cd
<b>Power:</b>	2.9 W/ft
<b>PF:</b>	1.0



## Beam Angle



**133.3°**

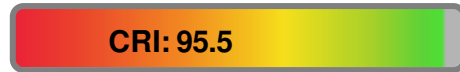


CIE 1931  
x: 0.432  
y: 0.401

## Light efficiency:



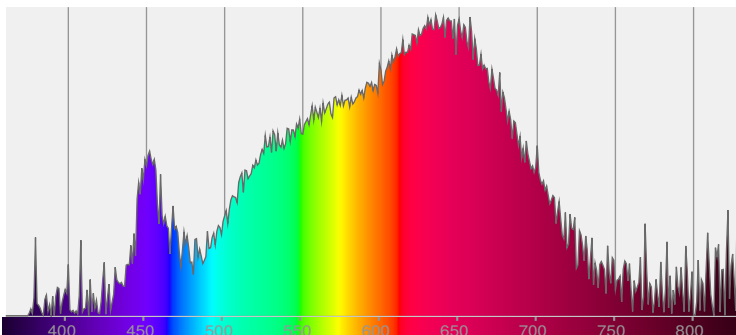
## Light quality:



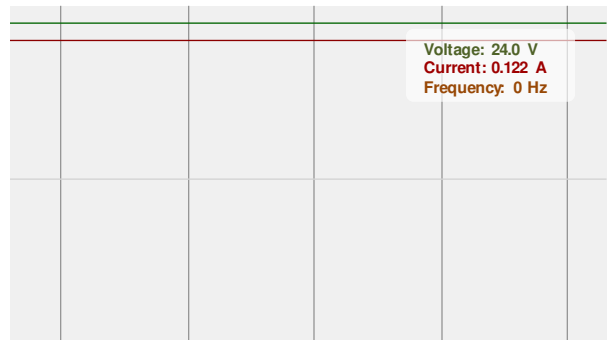
## Color temperature:



## Spectra

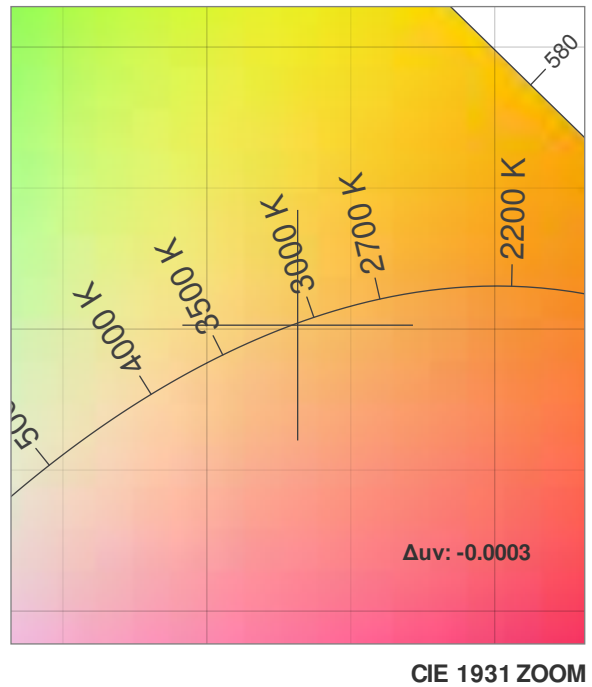
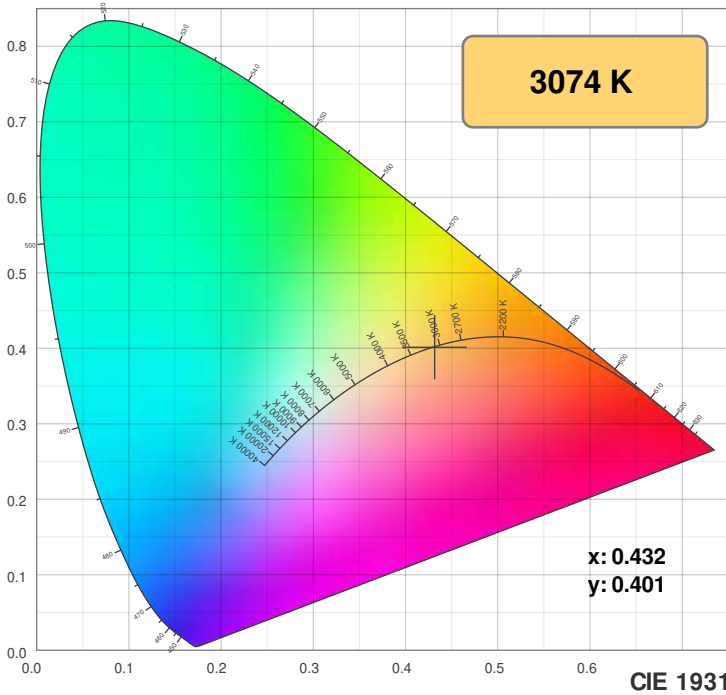


## Power

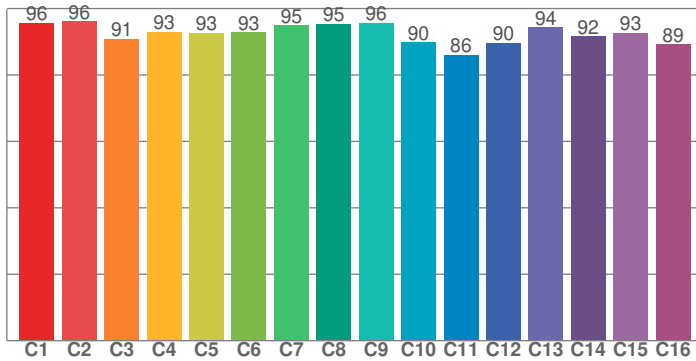


# Color Details

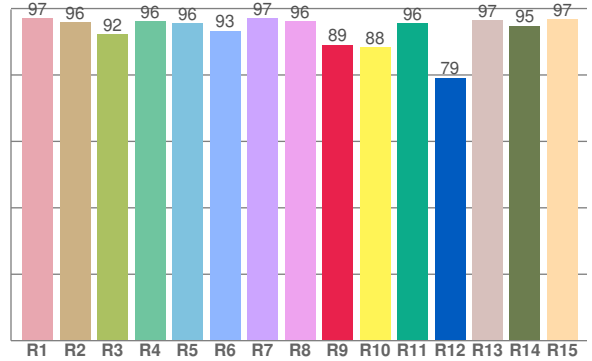
KURV-DW-WSC-DRY-30-HO-ENC-CL-S1-BW-NA



**TM30: 92.6**



**CRI: 95.5 (R1-R8)**



CRI R values, only R1-R8 are used to calculate final CRI value

R1	R2	R3	R4	R5	R6	R7	R8	R9	R10	R11	R12	R13	R14	R15
97.1	95.8	92.3	96.1	95.6	93.3	97.0	96.3	89.1	88.4	95.6	79.2	96.6	94.8	96.8

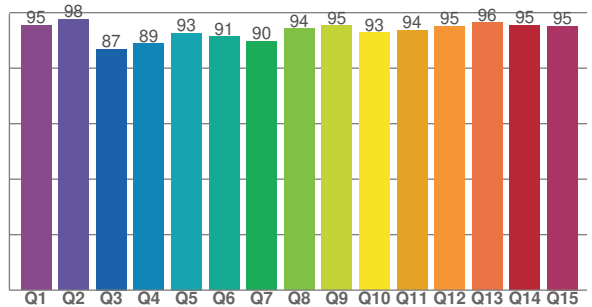
TM30 C values, 16 binned values out of total of 99 C values

C1	C2	C3	C4	C5	C6	C7	C8	C9	C10	C11	C12	C13	C14	C15	C16
95.7	96.2	90.9	93.0	92.6	92.8	94.9	95.4	95.7	89.8	86.1	89.6	94.3	91.7	92.7	89.1

CQS Q values

Q1	Q2	Q3	Q4	Q5	Q6	Q7	Q8	Q9	Q10	Q11	Q12	Q13	Q14	Q15
95.5	97.6	86.9	88.8	92.6	91.4	89.7	94.3	95.3	92.8	93.7	95.1	96.4	95.4	95.2

**CQS: 92.6**



## Color parameters

Color temperature	Color rendering index	Red component	Color fidelity	Color gamut	Color quality scale	Color coordinate cie 1931	Color coordinate cie 1931	Color coordinate	Color coordinate	Color deviation from black body
CCT	CRI	CRI R9	TM30 Rf	TM30 Rg	CQS	x	y	u	v	$\Delta uv$
3074 K	95.5	89.1	92.6	102.4	92.6	0.432	0.401	0.248	0.346	-0.0003



# TM30 Details

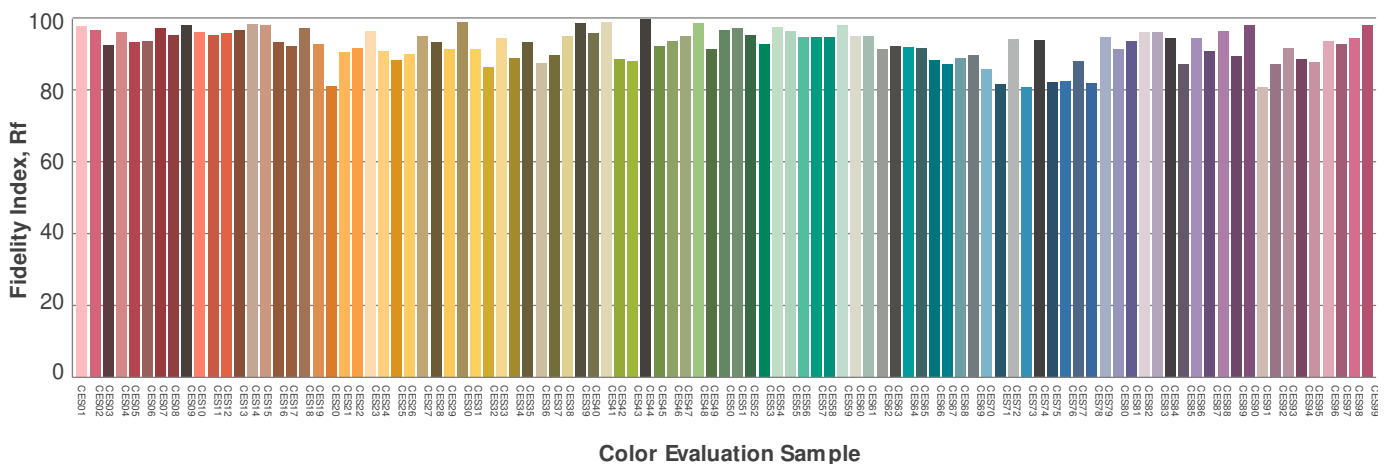
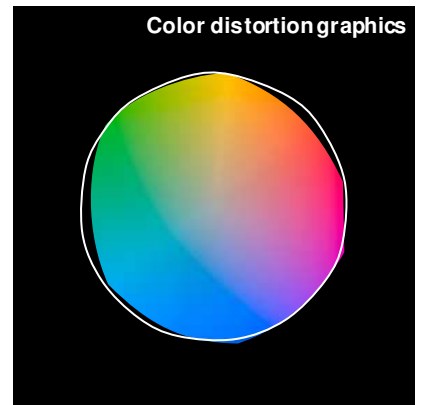
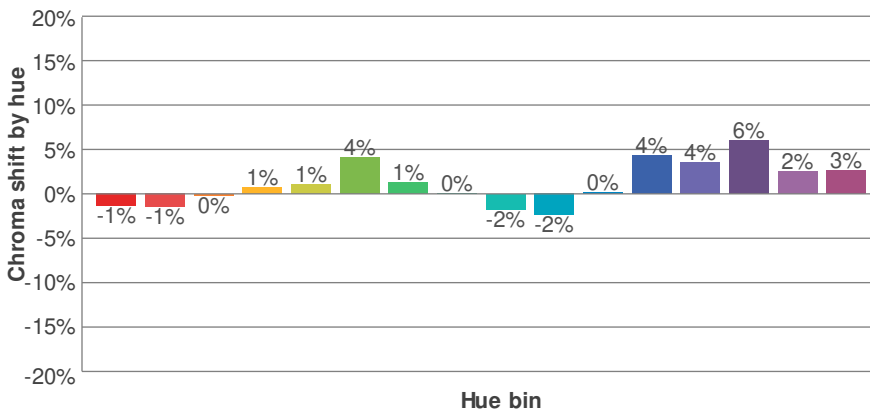
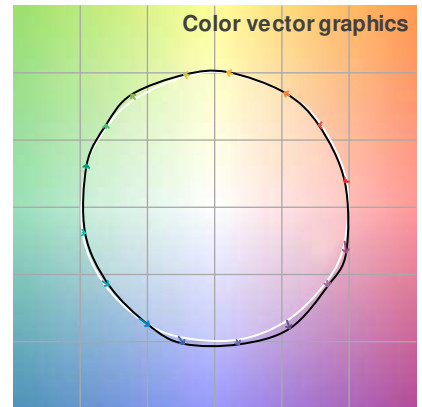
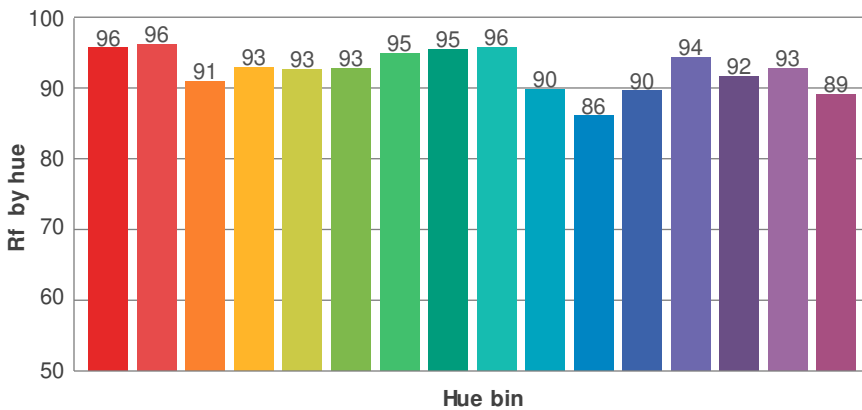
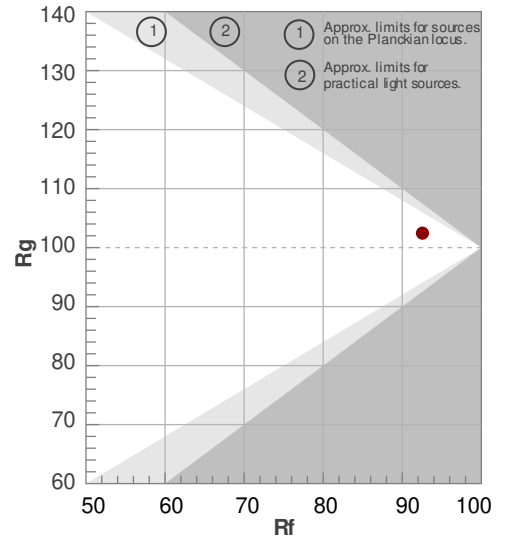
KURV-DW-WSC-DRY-30-HO-ENC-CL-S1-BW-NA



**Rf 92.6**  
Fidelity index Rf

**Rg 102.4**  
Gammut index Rg

Hue Bin	R <sub>f</sub>	Graphic shifts (%)	
		Chroma	Hue
1	96	-1%	-1%
2	96	-1%	1%
3	91	0%	4%
4	93	1%	4%
5	93	1%	3%
6	93	4%	0%
7	95	1%	-2%
8	95	0%	-3%
9	96	-2%	1%
10	90	-2%	5%
11	86	0%	9%
12	90	4%	5%
13	94	4%	1%
14	92	6%	-2%
15	93	2%	-3%
16	89	3%	-8%



# Photometric Details

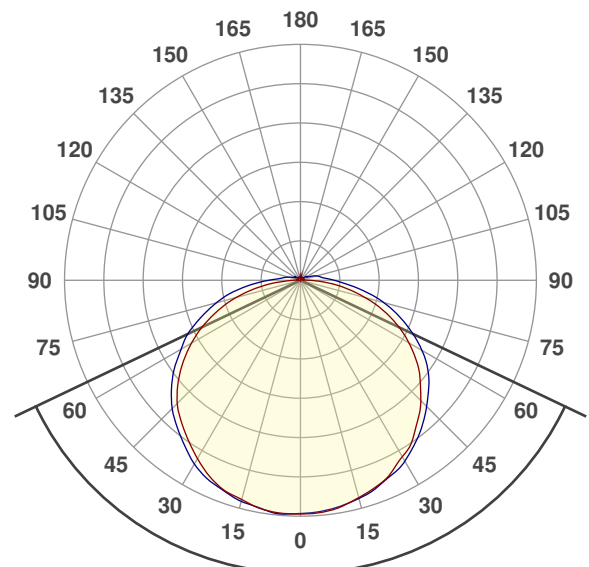
KURV-DW-WSC-DRY-30-HO-ENC-TL-S1-BW-NA



<b>Product name:</b> KURV-DW-WSC-DRY-30-HO-ENC-TL-S1-BW-NA
<b>Date:</b> 1/18/2019
<b>Powering product:</b> IQ-PH-80-120/24
<b>Output:</b> 183 lm/ft
<b>Peak:</b> 50.3 cd
<b>Power:</b> 2.9 W/ft
<b>PF:</b> 1.0



## Beam Angle



129°

CIE 1931  
x: 0.433  
y: 0.401



## Light efficiency:



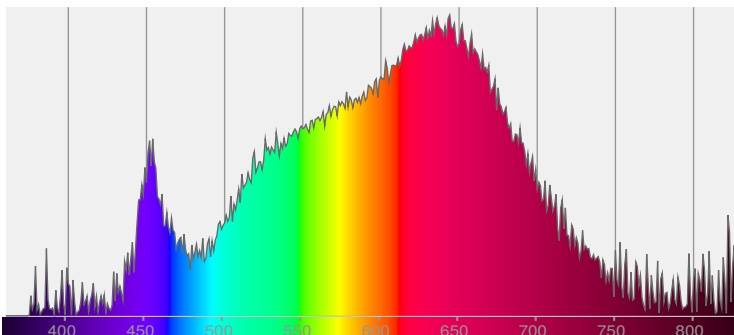
## Light quality:



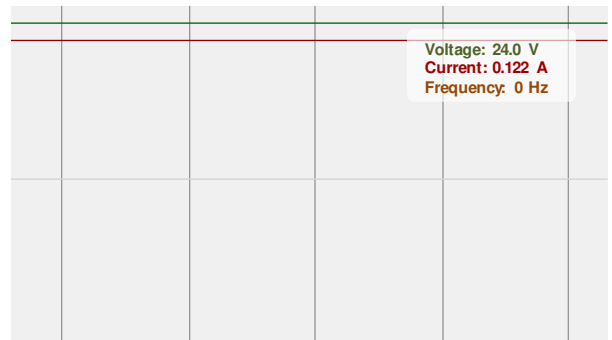
## Color temperature:



## Spectra

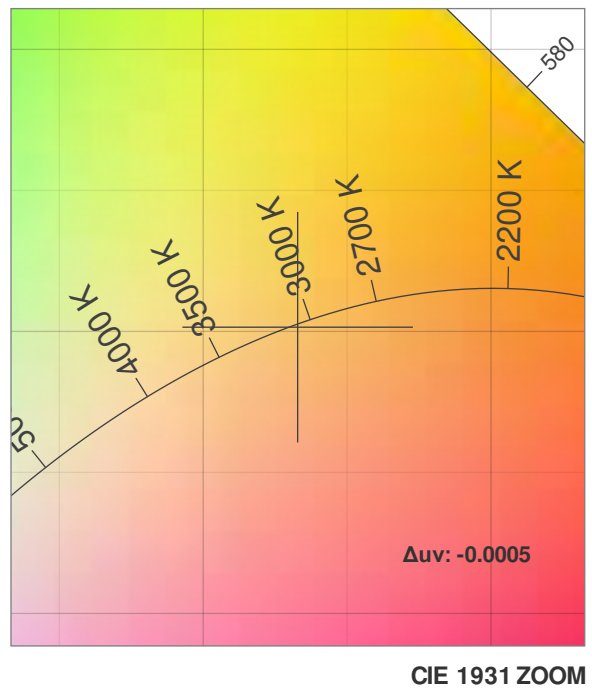
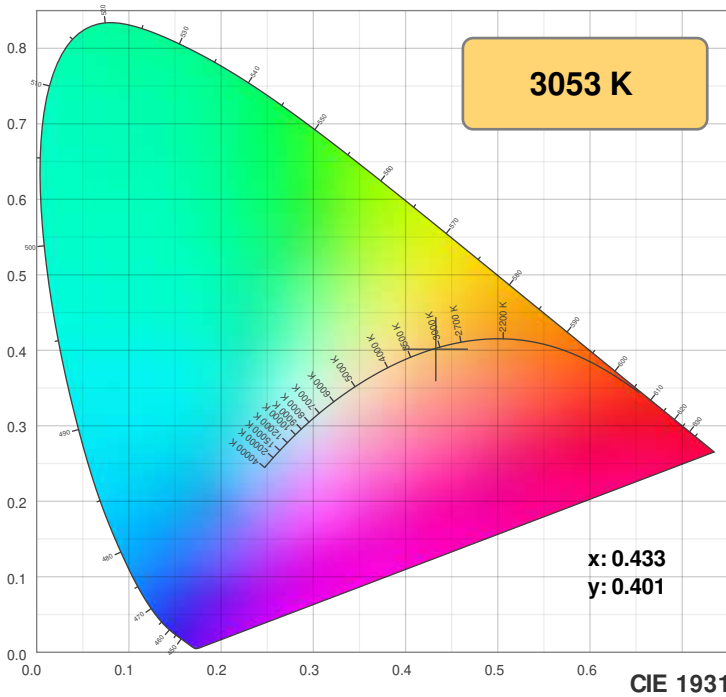


## Power

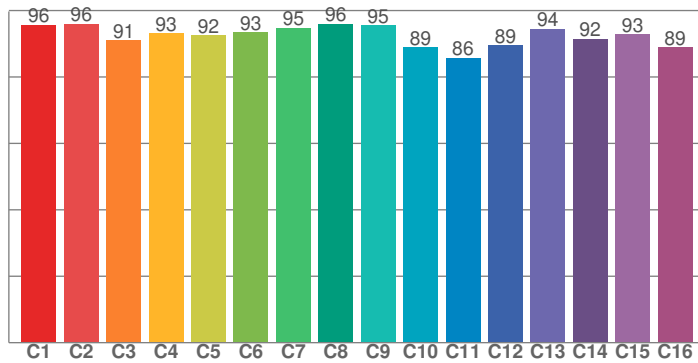


# Color Details

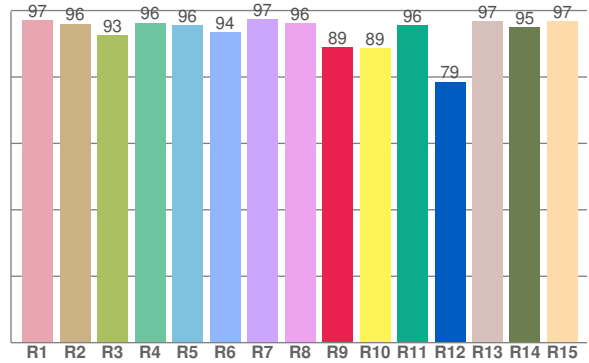
KURV-DW-WSC-DRY-30-HO-ENC-TL-S1-BW-NA



**TM30: 92.5**



**CRI: 95.6 (R1-R8)**



CRI R values, only R1-R8 are used to calculate final CRI value

R1	R2	R3	R4	R5	R6	R7	R8	R9	R10	R11	R12	R13	R14	R15
97.1	96.0	92.6	96.3	95.6	93.6	97.3	96.2	88.8	88.7	95.6	78.5	96.7	94.9	96.8

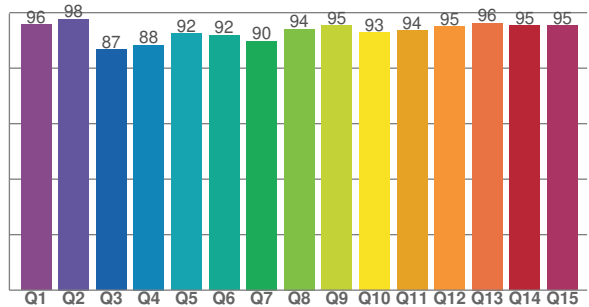
TM30 C values, 16 binned values out of total of 99 C values

C1	C2	C3	C4	C5	C6	C7	C8	C9	C10	C11	C12	C13	C14	C15	C16
95.6	96.0	91.0	93.1	92.5	93.4	94.7	96.0	95.5	88.9	85.7	89.5	94.5	91.5	92.8	88.8

CQS Q values

Q1	Q2	Q3	Q4	Q5	Q6	Q7	Q8	Q9	Q10	Q11	Q12	Q13	Q14	Q15
95.7	97.7	86.7	88.3	92.5	91.8	89.8	94.1	95.3	92.9	93.6	95.0	96.3	95.4	95.3

**CQS: 92.5**



## Color parameters

Color temperature	Color rendering index	Red component	Color fidelity	Color gamut	Color quality scale	Color coordinate cie 1931	Color coordinate cie 1931	Color coordinate	Color coordinate	Color deviation from black body
CCT	CRI	CRI R9	TM30 Rf	TM30 Rg	CQS	x	y	u	v	Δuv
3053 K	95.6	88.8	92.5	102.2	92.5	0.433	0.401	0.249	0.347	-0.0005

# TM30 Details

KURV-DW-WSC-DRY-30-HO-ENC-TL-S1-BW-NA



**Rf 92.5**  
Fidelity index Rf

**Rg 102.2**  
Gammut index Rg

Hue Bin	R <sub>f</sub>	Graphic shifts (%)	
		Chroma	Hue
1	96	-1%	-1%
2	96	-2%	1%
3	91	0%	4%
4	93	0%	3%
5	92	0%	3%
6	93	4%	0%
7	95	1%	-2%
8	96	0%	-2%
9	95	-2%	1%
10	89	-2%	5%
11	86	0%	9%
12	89	5%	5%
13	94	3%	1%
14	92	6%	-2%
15	93	2%	-3%
16	89	3%	-8%

