

# Photometric Details



BOXA-RGB-WSC-DRY-ALL-SO-ENC-CL-S1-BW-NA

<b>Product name:</b>	BOXA-RGB-WSC-DRY-ALL-SO-ENC-CL-S1-BW-NA
<b>Date:</b>	9/27/2019
<b>Powering product:</b>	<u>IQ-PH-80-120/24</u>
<b>Output:</b>	208 lm/ft
<b>Peak:</b>	63.8 cd
<b>Power:</b>	5.3 W/ft
<b>PF:</b>	1.0



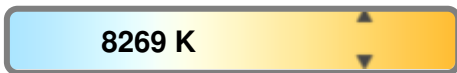
### Light efficiency:



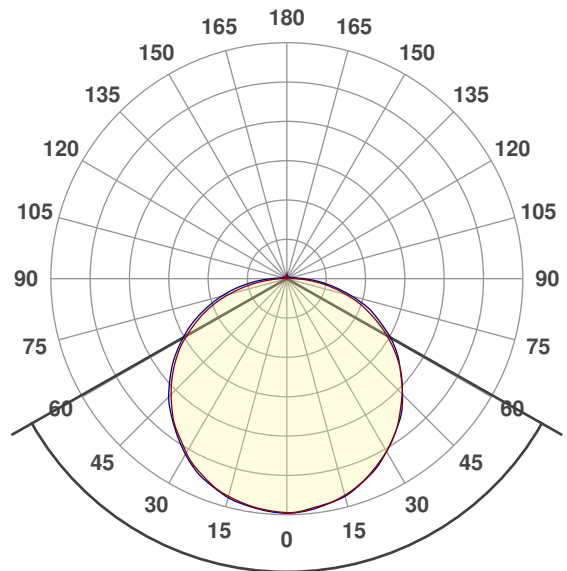
### Light quality:



### Color temperature:



### Beam Angle

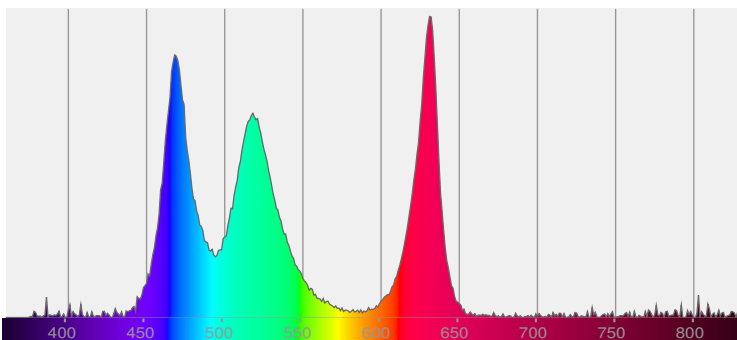


120.8°

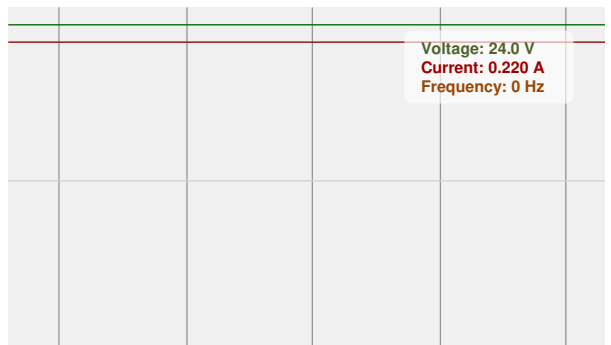
CIE 1931  
x: 0.280  
y: 0.338



### Spectra



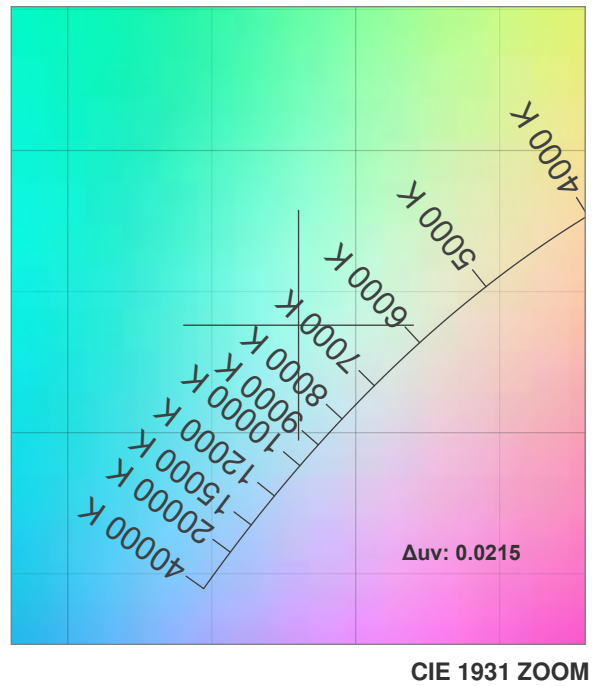
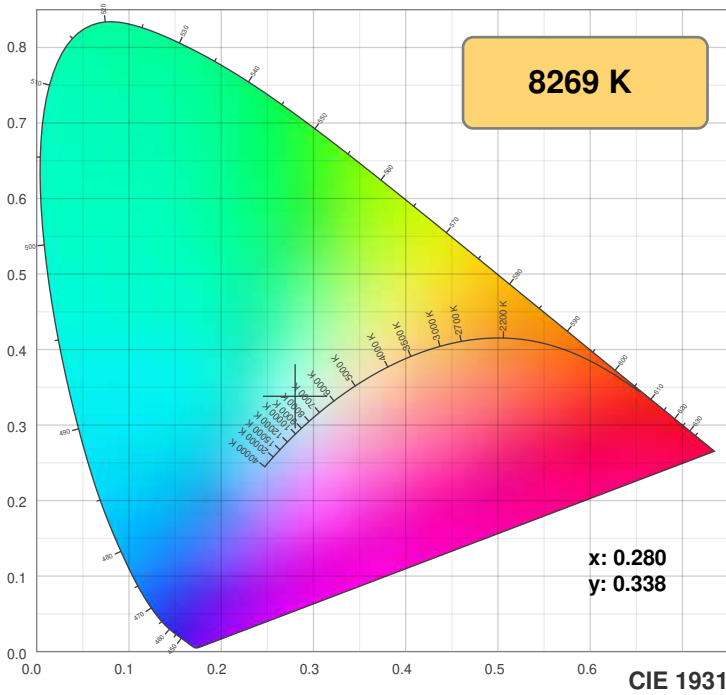
### Power



# Color Details

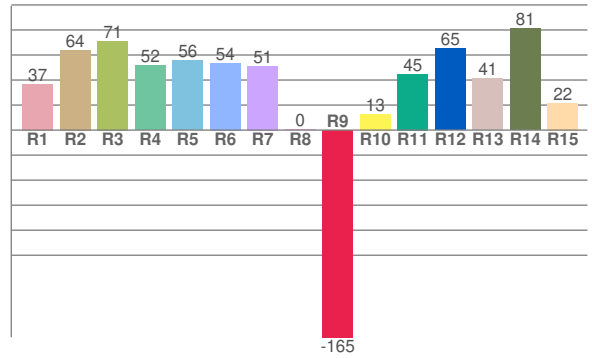
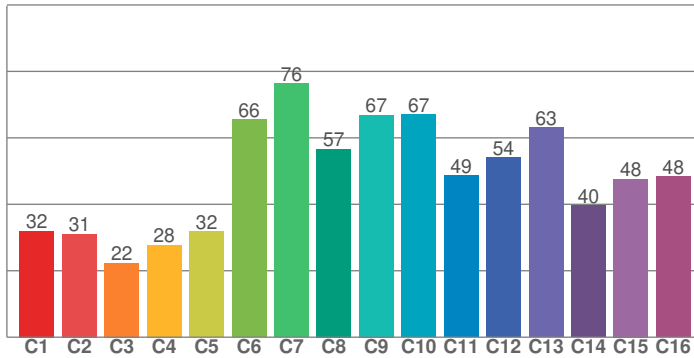


BOXA-RGB-WSC-DRY-ALL-SO-ENC-CL-S1-BW-NA



TM30: 47.7

CRI: 48.0 (R1-R8)



CRI R values, only R1-R8 are used to calculate final CRI value

R1	R2	R3	R4	R5	R6	R7	R8	R9	R10	R11	R12	R13	R14	R15
36.8	64.0	71.1	51.7	55.6	53.6	51.3	0.4	-165.5	12.8	44.8	65.4	41.4	80.9	21.7

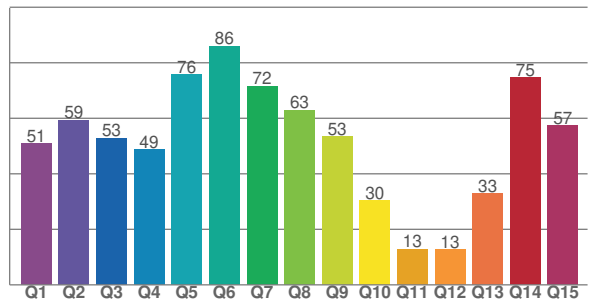
TM30 C values, 16 binned values out of total of 99 C values

C1	C2	C3	C4	C5	C6	C7	C8	C9	C10	C11	C12	C13	C14	C15	C16
32.0	31.1	22.3	27.7	31.8	65.6	76.4	56.7	66.9	67.0	48.6	54.1	63.1	39.6	47.6	48.4

CQS Q values

Q1	Q2	Q3	Q4	Q5	Q6	Q7	Q8	Q9	Q10	Q11	Q12	Q13	Q14	Q15
50.9	59.3	52.9	48.7	75.8	86.1	71.6	63.0	53.3	30.3	12.9	12.7	32.8	74.7	57.4

CQS: 46.9



## Color parameters

Color temperature	Color rendering index	Red component	Color fidelity	Color gamut	Color quality scale	Color coordinate cie 1931	Color coordinate cie 1931	Color coordinate	Color coordinate	Color deviation from black body
CCT	CRI	CRI R9	TM30 Rf	TM30 Rg	CQS	x	y	u	v	Δuv
8269 K	48.0	-165.5	47.7	95.4	46.9	0.280	0.338	0.172	0.312	0.0215

# TM30 Details

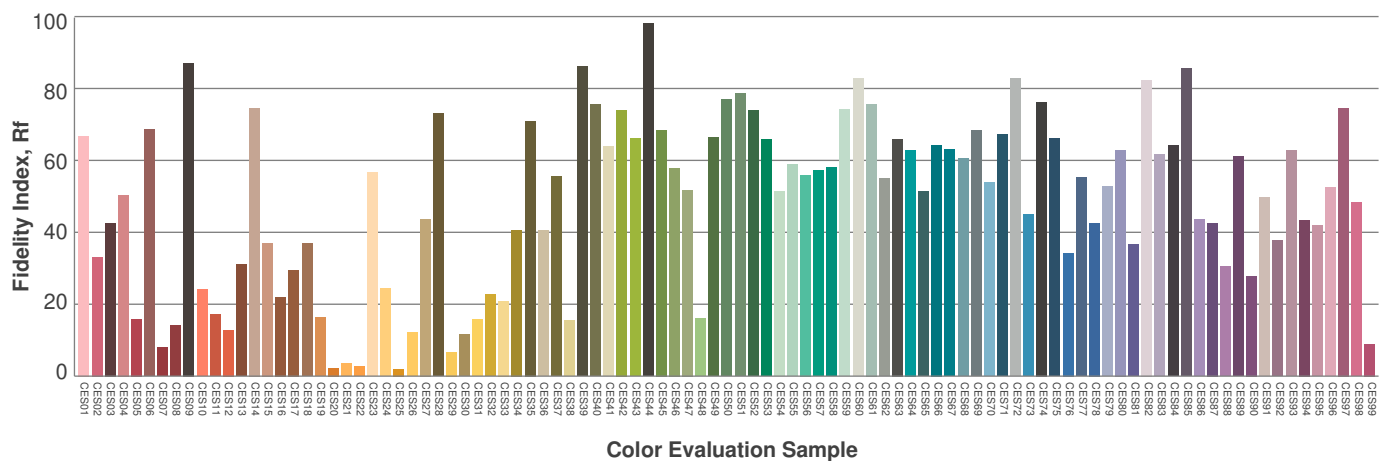
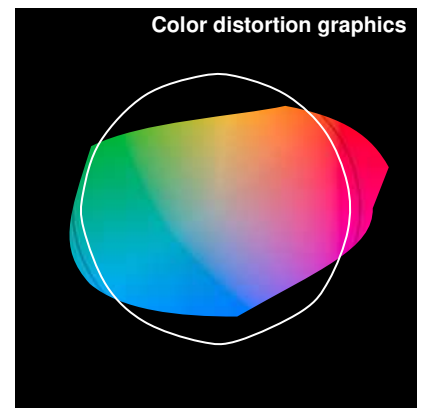
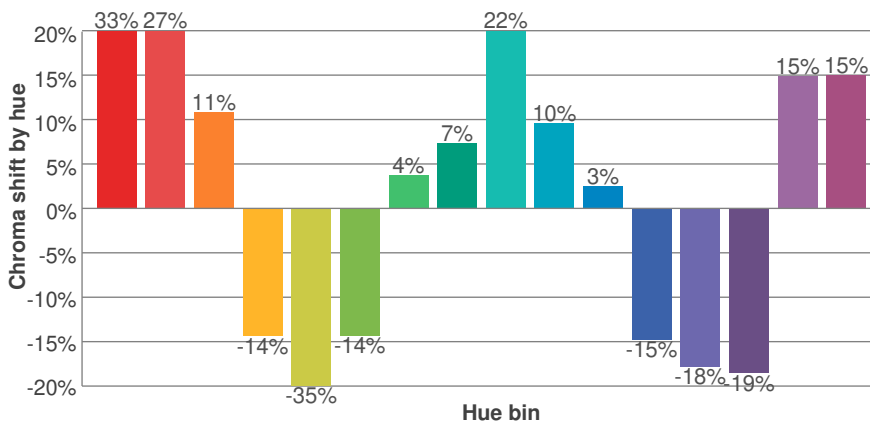
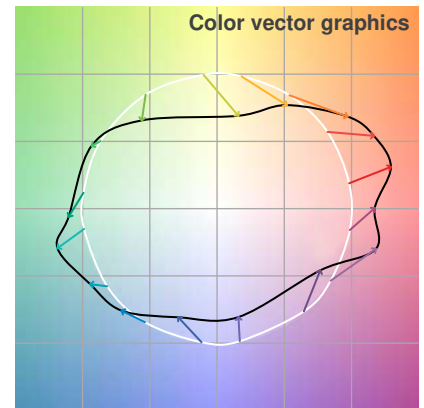
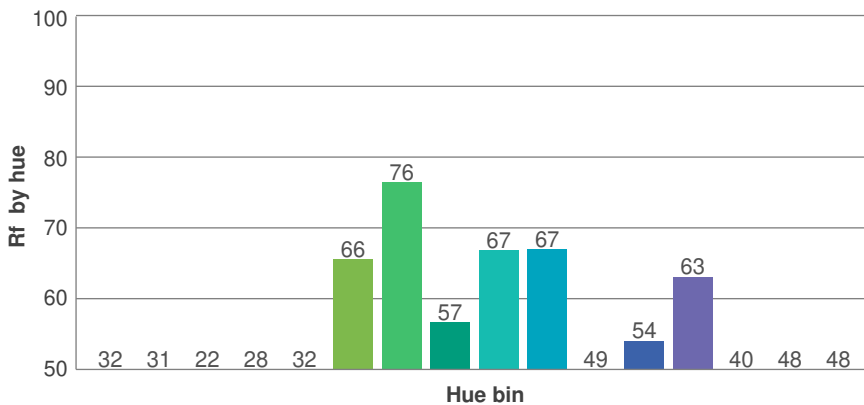
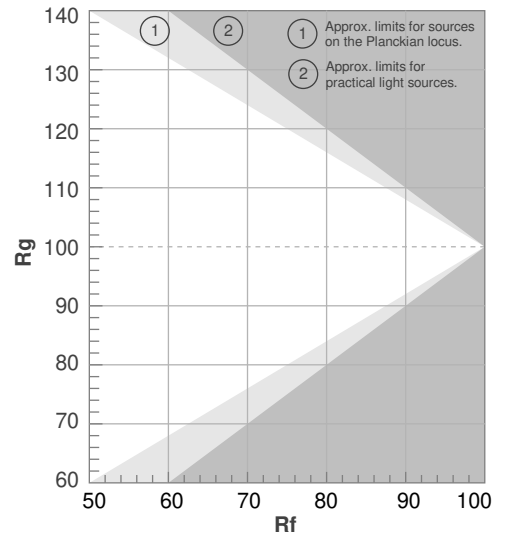


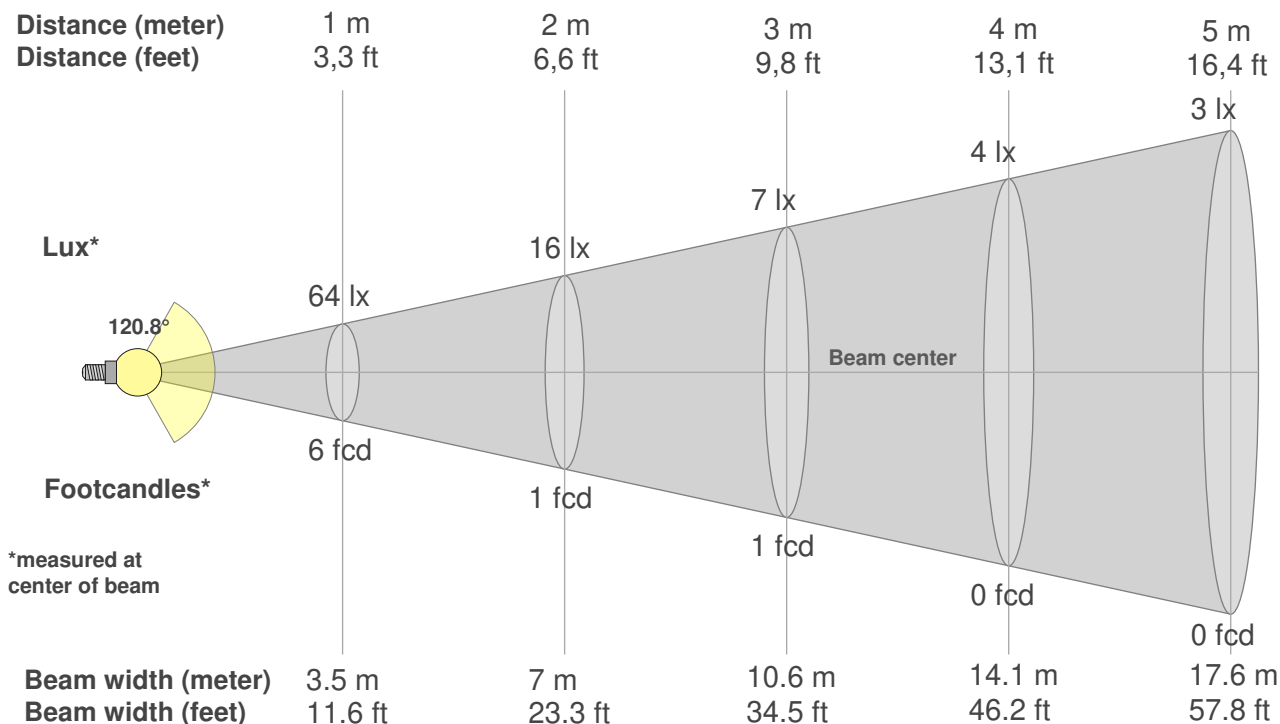
BOXA-RGB-WSC-DRY-ALL-SO-ENC-CL-S1-BW-NA

**Rf 47.7**  
Fidelity index Rf

**Rg 95.4**  
Gamut index Rg

Hue Bin	R <sub>f</sub>	Graphic shifts (%)	
		Chroma	Hue
1	32	33%	6%
2	31	27%	-22%
3	22	11%	-45%
4	28	-14%	-37%
5	32	-35%	-19%
6	66	-14%	13%
7	76	4%	7%
8	57	7%	20%
9	67	22%	10%
10	67	10%	-8%
11	49	3%	-19%
12	54	-15%	-21%
13	63	-18%	3%
14	40	-19%	27%
15	48	15%	38%
16	48	15%	20%





**Beam intensities from 1-20m**

1m	2m	3m	4m	5m	6m	7m	8m	9m	10m	11m	12m	13m	14m	15m	16m	17m	18m	19m	20m
3.3ft	6.6ft	9.8ft	13.1ft	16.4ft	19.7ft	23ft	26.2ft	29.5ft	32.8ft	36.1ft	39.4ft	42.7ft	45.9ft	49.2ft	52.5ft	55.8ft	59.1ft	62.3ft	65.6ft
64lx	16lx	7lx	4lx	3lx	2lx	1lx	1lx	1lx	1lx	1lx	0lx	0lx	0lx	0lx	0lx	0lx	0lx	0lx	0lx
5.9fcd	1.5fcd	0.7fcd	0.4fcd	0.2fcd	0.2fcd	0.1fcd	0.1fcd	0.1fcd	0.1fcd	0fcd	0fcd	0fcd	0fcd	0fcd	0fcd	0fcd	0fcd	0fcd	0fcd

**Intensities in 0° c-plane**

0°	5°	10°	15°	20°	25°	30°	35°	40°	45°	50°	55°	60°	65°	70°	75°	80°	85°	90°	95°
63.7	63.0	62.2	60.9	59.1	56.8	54.2	51.3	47.9	44.4	40.7	36.3	31.7	26.8	22.0	16.8	11.8	6.9	2.7	0.8
100%	99%	98%	96%	93%	89%	85%	81%	75%	70%	64%	57%	50%	42%	35%	26%	18%	11%	4%	1%

**Intensities in 90° c-plane**

0°	5°	10°	15°	20°	25°	30°	35°	40°	45°	50°	55°	60°	65°	70°	75°	80°	85°	90°	95°
63.7	63.3	62.4	61.2	59.3	57.1	54.3	51.3	48.3	44.5	40.5	36.9	32.8	28.1	23.7	18.4	13.2	8.7	4.8	2.5
100%	99%	98%	96%	93%	90%	85%	81%	76%	70%	64%	58%	51%	44%	37%	29%	21%	14%	8%	4%

**Intensities in 180° c-plane**

0°	5°	10°	15°	20°	25°	30°	35°	40°	45°	50°	55°	60°	65°	70°	75°	80°	85°	90°	95°
63.7	63.2	62.4	61.2	59.6	57.4	54.7	51.5	48.3	44.5	40.6	36.3	31.7	26.8	21.7	16.3	10.7	5.8	2.1	0.6
100%	99%	98%	96%	94%	90%	86%	81%	76%	70%	64%	57%	50%	42%	34%	26%	17%	9%	3%	1%

**Intensities in 270° c-plane**

0°	5°	10°	15°	20°	25°	30°	35°	40°	45°	50°	55°	60°	65°	70°	75°	80°	85°	90°	95°
63.7	63.4	62.7	61.7	59.9	57.9	55.2	52.0	48.8	45.4	41.4	37.3	32.8	28.2	23.3	18.4	13.5	8.6	4.6	2.1
100%	100%	98%	97%	94%	91%	87%	82%	77%	71%	65%	59%	51%	44%	37%	29%	21%	14%	7%	3%

Beam angle 50%	Field angle 10%	Cutoff angle 2,5%	Intensity ratio in 120° cone	Intensity ratio in 90° cone
120.8°	172.7°	191.8°	71.7%	47.7%

# Photometric Details



BOXA-RGB-WSC-DRY-R-SO-ENC-CL-S1-BW-NA

**Product name:**  
BOXA-RGB-WSC-DRY-R-SO-ENC-CL-S1-BW-NA

**Date:**  
9/27/2019

**Powering product:**  
IQ-PH-80-120/24

**Output:** 55.6 lm/ft

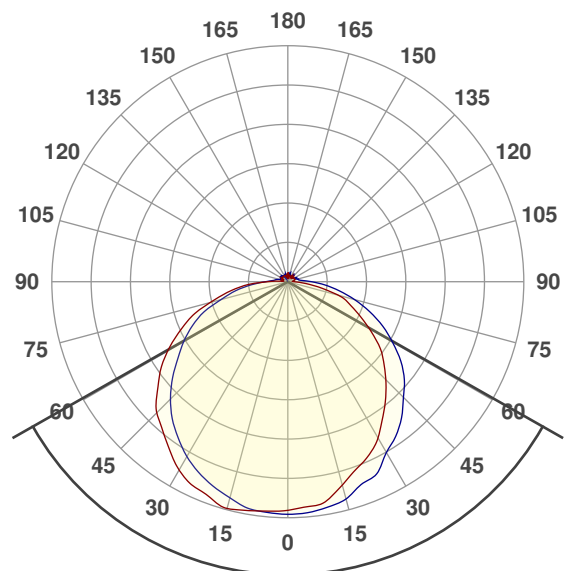
**Peak:** 16.2 cd

**Power:** 1.9 W/ft

**PF:** 1.0



## Beam Angle



120.8°

CIE 1931  
x: 0.659  
y: 0.300

## Light efficiency:



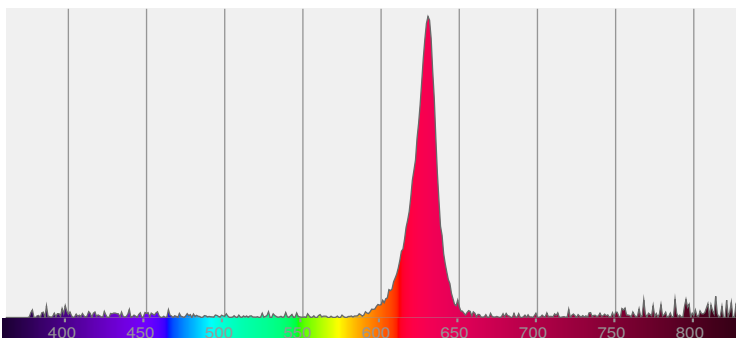
## Light quality:



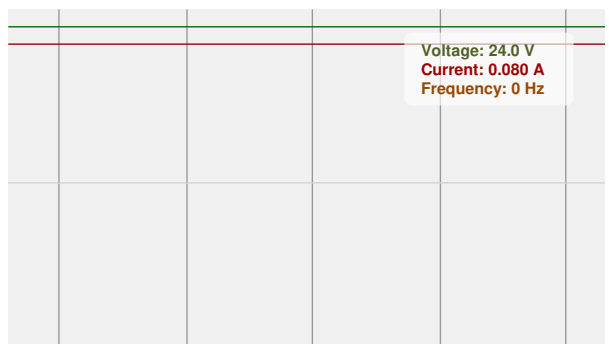
## Color temperature:



## Spectra



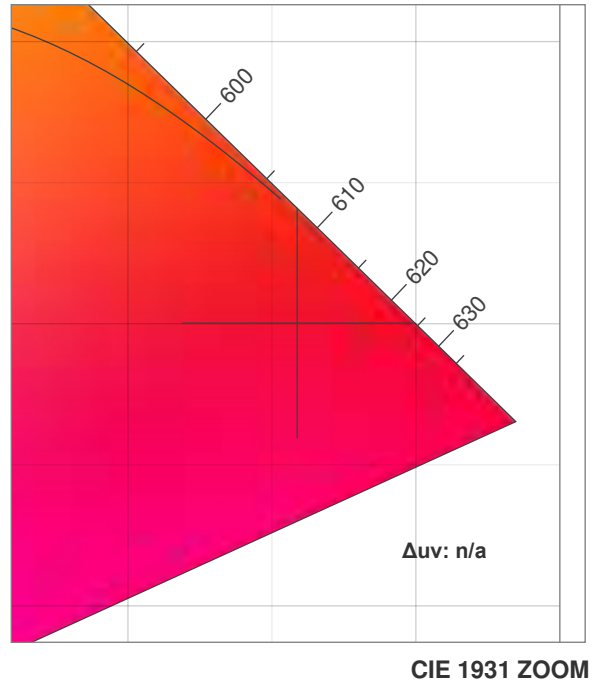
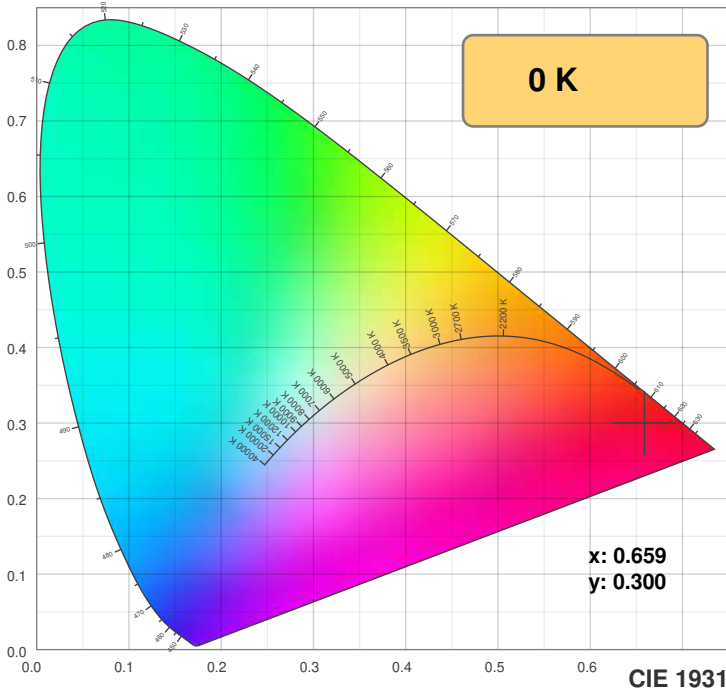
## Power



# Color Details

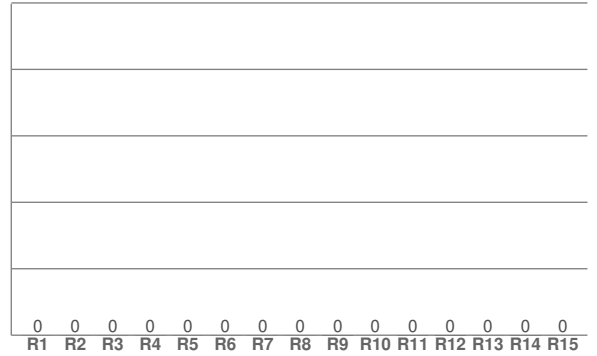
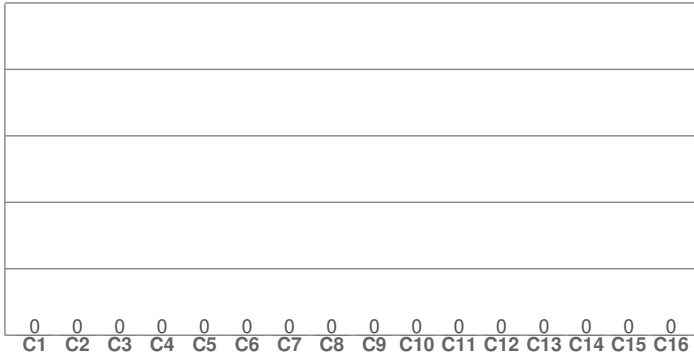


BOXA-RGB-WSC-DRY-R-SO-ENC-CL-S1-BW-NA



TM30: 0.0

CRI: 0.0 (R1-R8)



CRI R values, only R1-R8 are used to calculate final CRI value

R1	R2	R3	R4	R5	R6	R7	R8	R9	R10	R11	R12	R13	R14	R15
0.0	0.0	0.0	0.0	0.0	0.0	0.0	0.0	0.0	0.0	0.0	0.0	0.0	0.0	0.0

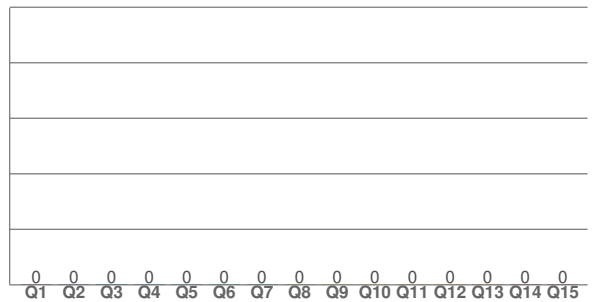
TM30 C values, 16 binned values out of total of 99 C values

C1	C2	C3	C4	C5	C6	C7	C8	C9	C10	C11	C12	C13	C14	C15	C16
0.0	0.0	0.0	0.0	0.0	0.0	0.0	0.0	0.0	0.0	0.0	0.0	0.0	0.0	0.0	0.0

CQS Q values

Q1	Q2	Q3	Q4	Q5	Q6	Q7	Q8	Q9	Q10	Q11	Q12	Q13	Q14	Q15
0.0	0.0	0.0	0.0	0.0	0.0	0.0	0.0	0.0	0.0	0.0	0.0	0.0	0.0	0.0

CQS: 0.0



## Color parameters

Color temperature	Color rendering index	Red component	Color fidelity	Color gamut	Color quality scale	Color coordinate cie 1931	Color coordinate cie 1931	Color coordinate	Color coordinate	Color deviation from black body
CCT	CRI	CRI R9	TM30 Rf	TM30 Rg	CQS	x	y	u	v	Δuv
0 K	0.0	0.0	0.0	0.0	0.0	0.659	0.300	0.499	0.341	n/a

# TM30 Details

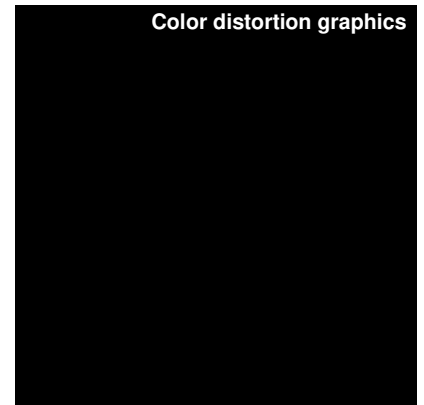
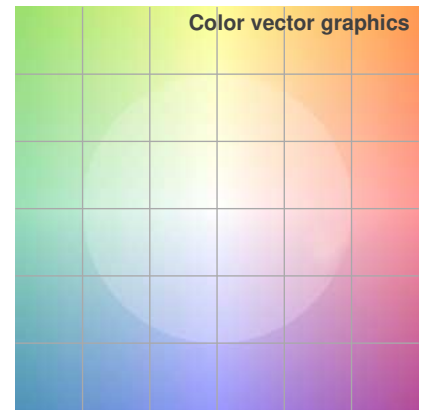
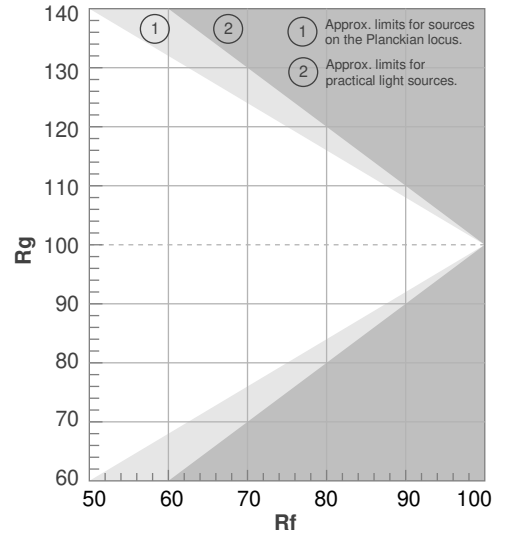


BOXA-RGB-WSC-DRY-R-SO-ENC-CL-S1-BW-NA

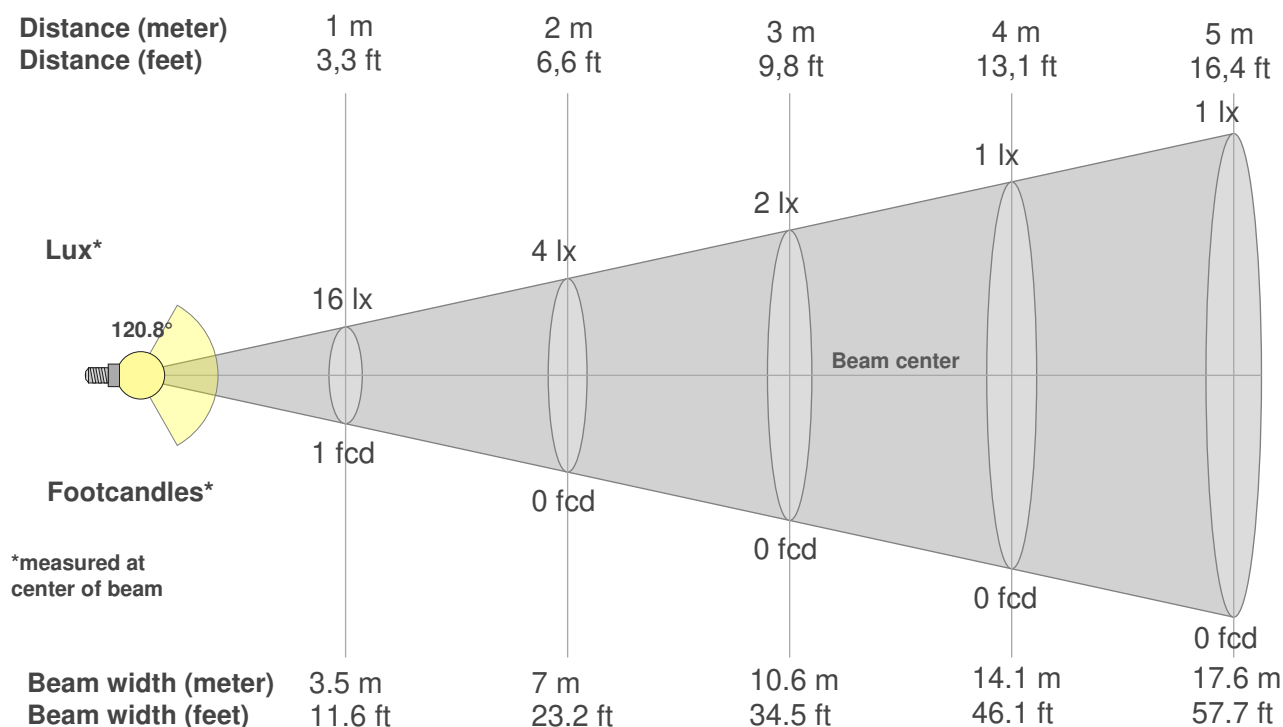
**Rf 0.0**  
Fidelity index Rf

**Rg 0.0**  
Gammut index Rg

Hue Bin	R <sub>f</sub>	Graphic shifts (%)	
		Chroma	Hue
1	0	0%	0%
2	0	0%	0%
3	0	0%	0%
4	0	0%	0%
5	0	0%	0%
6	0	0%	0%
7	0	0%	0%
8	0	0%	0%
9	0	0%	0%
10	0	0%	0%
11	0	0%	0%
12	0	0%	0%
13	0	0%	0%
14	0	0%	0%
15	0	0%	0%
16	0	0%	0%



Color Evaluation Sample



**Beam intensities from 1-20m**

1m	2m	3m	4m	5m	6m	7m	8m	9m	10m	11m	12m	13m	14m	15m	16m	17m	18m	19m	20m
3.3ft	6.6ft	9.8ft	13.1ft	16.4ft	19.7ft	23ft	26.2ft	29.5ft	32.8ft	36.1ft	39.4ft	42.7ft	45.9ft	49.2ft	52.5ft	55.8ft	59.1ft	62.3ft	65.6ft
16lx	4lx	2lx	1lx	1lx	0lx	0lx	0lx	0lx	0lx	0lx	0lx	0lx	0lx	0lx	0lx	0lx	0lx	0lx	0lx
1.5fcd	0.4fcd	0.2fcd	0.1fcd	0.1fcd	0fcd	0fcd	0fcd	0fcd	0fcd	0fcd	0fcd	0fcd	0fcd	0fcd	0fcd	0fcd	0fcd	0fcd	0fcd

**Intensities in 0° c-plane**

0°	5°	10°	15°	20°	25°	30°	35°	40°	45°	50°	55°	60°	65°	70°	75°	80°	85°	90°	95°
15.9	15.6	15.3	14.5	13.8	13.2	12.4	11.4	10.5	9.6	8.6	7.7	6.5	5.5	4.5	3.6	2.2	1.1	0.5	0.3
100%	98%	96%	91%	87%	83%	78%	72%	66%	60%	54%	48%	41%	34%	28%	23%	14%	7%	3%	2%

**Intensities in 90° c-plane**

0°	5°	10°	15°	20°	25°	30°	35°	40°	45°	50°	55°	60°	65°	70°	75°	80°	85°	90°	95°
15.9	16.0	15.8	15.5	14.9	14.6	13.6	13.0	12.2	11.3	10.5	9.5	8.3	7.2	6.0	4.8	3.6	2.6	1.6	1.0
100%	101%	99%	98%	94%	92%	86%	82%	77%	71%	66%	60%	52%	45%	38%	30%	23%	16%	10%	6%

**Intensities in 180° c-plane**

0°	5°	10°	15°	20°	25°	30°	35°	40°	45°	50°	55°	60°	65°	70°	75°	80°	85°	90°	95°
15.9	15.9	16.1	16.2	15.8	15.5	15.0	14.2	13.5	12.8	11.8	10.7	9.6	8.3	7.1	5.6	4.2	3.0	1.5	0.5
100%	100%	101%	102%	99%	97%	94%	89%	84%	80%	74%	67%	60%	52%	44%	35%	27%	19%	9%	3%

**Intensities in 270° c-plane**

0°	5°	10°	15°	20°	25°	30°	35°	40°	45°	50°	55°	60°	65°	70°	75°	80°	85°	90°	95°
15.9	16.0	15.9	15.5	15.0	14.5	13.9	13.2	12.4	11.5	10.4	9.3	8.3	7.3	6.2	4.8	3.7	2.6	1.6	1.0
100%	100%	100%	97%	94%	91%	88%	83%	78%	72%	65%	58%	52%	46%	39%	30%	23%	16%	10%	6%

Beam angle 50%	Field angle 10%	Cutoff angle 2,5%	Intensity ratio in 120° cone	Intensity ratio in 90° cone
120.8°	176.1°	360°	67.7%	44.9%



# Photometric Details



BOXA-RGB-WSC-DRY-G-SO-ENC-CL-S1-BW-NA

<b>Product name:</b>	BOXA-RGB-WSC-DRY-G-SO-ENC-CL-S1-BW-NA
<b>Date:</b>	9/27/2019
<b>Powering product:</b>	<u>IQ-PH-80-120/24</u>
<b>Output:</b>	142 lm/ft
<b>Peak:</b>	42.9 cd
<b>Power:</b>	2.4 W/ft
<b>PF:</b>	1.0



### Light efficiency:



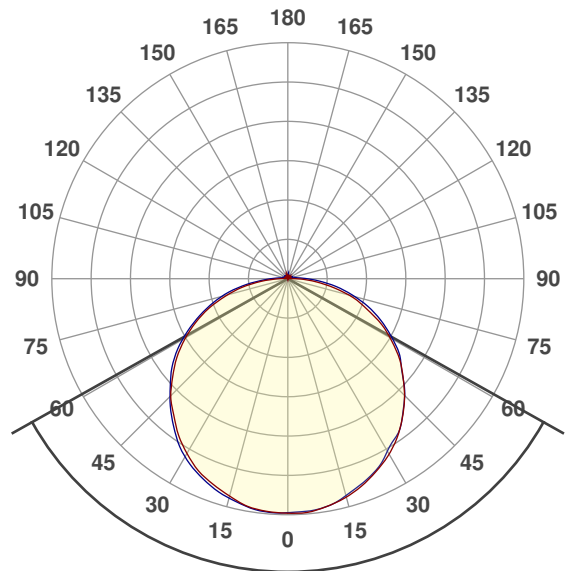
### Light quality:



### Color temperature:



### Beam Angle

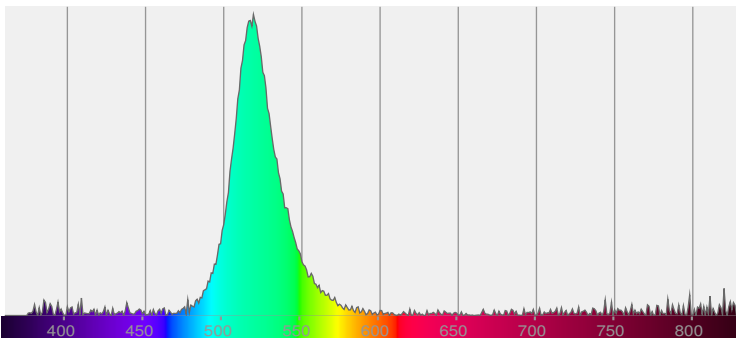


121.4°

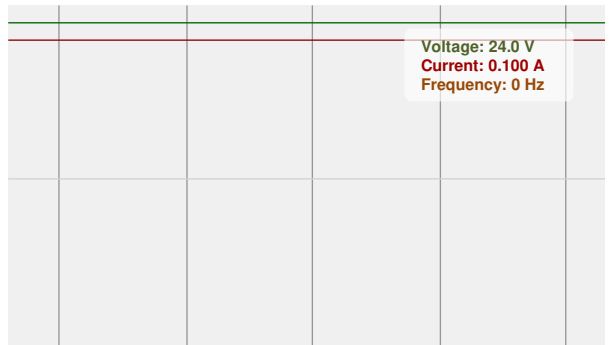


CIE 1931  
x: 0.156  
y: 0.702

### Spectra



### Power

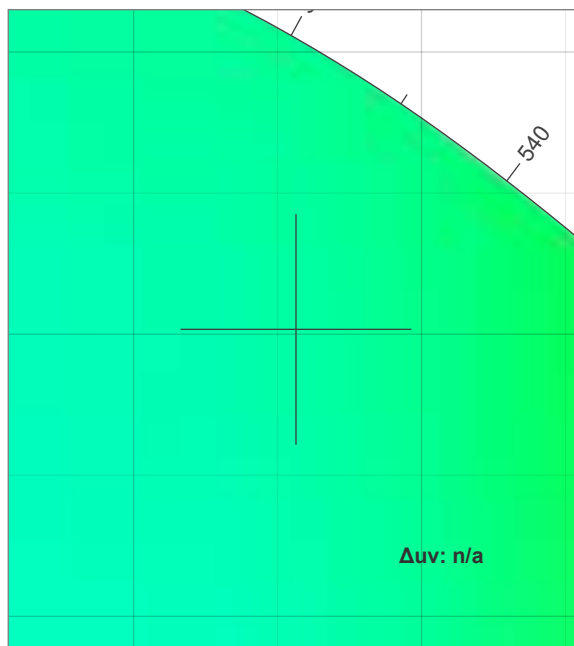
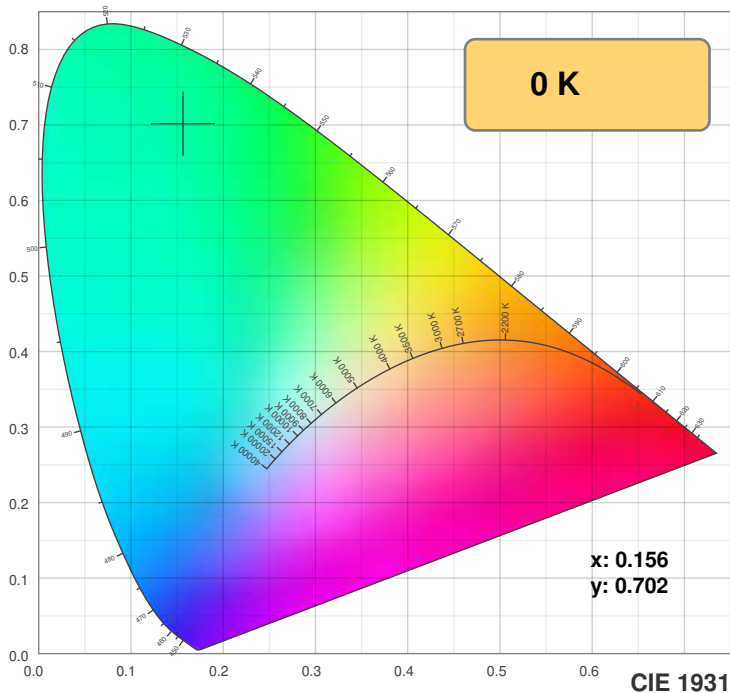


Voltage: 24.0 V  
Current: 0.100 A  
Frequency: 0 Hz

# Color Details

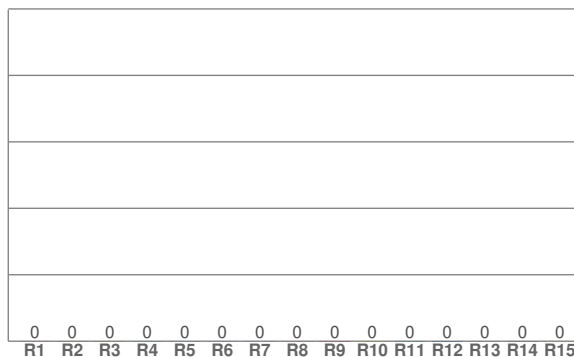
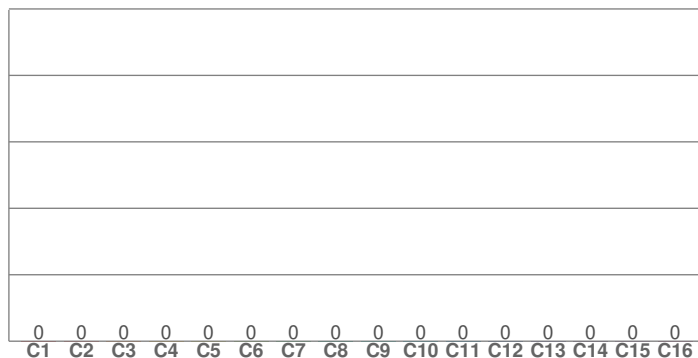


BOXA-RGB-WSC-DRY-G-SO-ENC-CL-S1-BW-NA



TM30: 0.0

CRI: 0.0 (R1-R8)



CRI R values, only R1-R8 are used to calculate final CRI value

R1	R2	R3	R4	R5	R6	R7	R8	R9	R10	R11	R12	R13	R14	R15
0.0	0.0	0.0	0.0	0.0	0.0	0.0	0.0	0.0	0.0	0.0	0.0	0.0	0.0	0.0

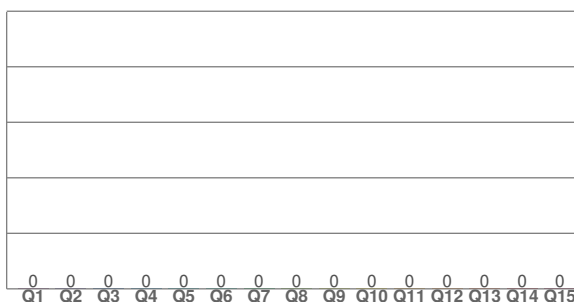
TM30 C values, 16 binned values out of total of 99 C values

C1	C2	C3	C4	C5	C6	C7	C8	C9	C10	C11	C12	C13	C14	C15	C16
0.0	0.0	0.0	0.0	0.0	0.0	0.0	0.0	0.0	0.0	0.0	0.0	0.0	0.0	0.0	0.0

CQS Q values

Q1	Q2	Q3	Q4	Q5	Q6	Q7	Q8	Q9	Q10	Q11	Q12	Q13	Q14	Q15
0.0	0.0	0.0	0.0	0.0	0.0	0.0	0.0	0.0	0.0	0.0	0.0	0.0	0.0	0.0

CQS: 0.0



## Color parameters

Color temperature	Color rendering index	Red component	Color fidelity	Color gamut	Color quality scale	Color coordinate cie 1931	Color coordinate cie 1931	Color coordinate	Color coordinate	Color deviation from black body
CCT	CRI	CRI R9	TM30 Rf	TM30 Rg	CQS	x	y	u	v	$\Delta uv$
0 K	0.0	0.0	0.0	0.0	0.0	0.156	0.702	0.056	0.379	n/a

# TM30 Details

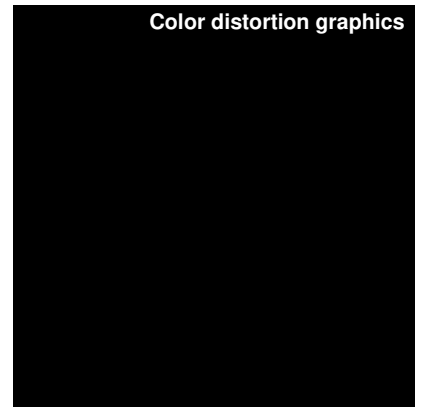
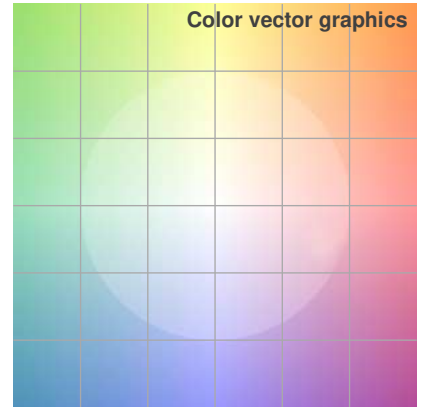
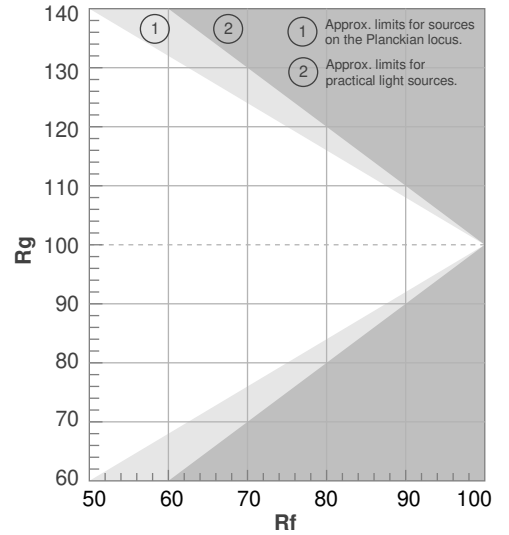


BOXA-RGB-WSC-DRY-G-SO-ENC-CL-S1-BW-NA

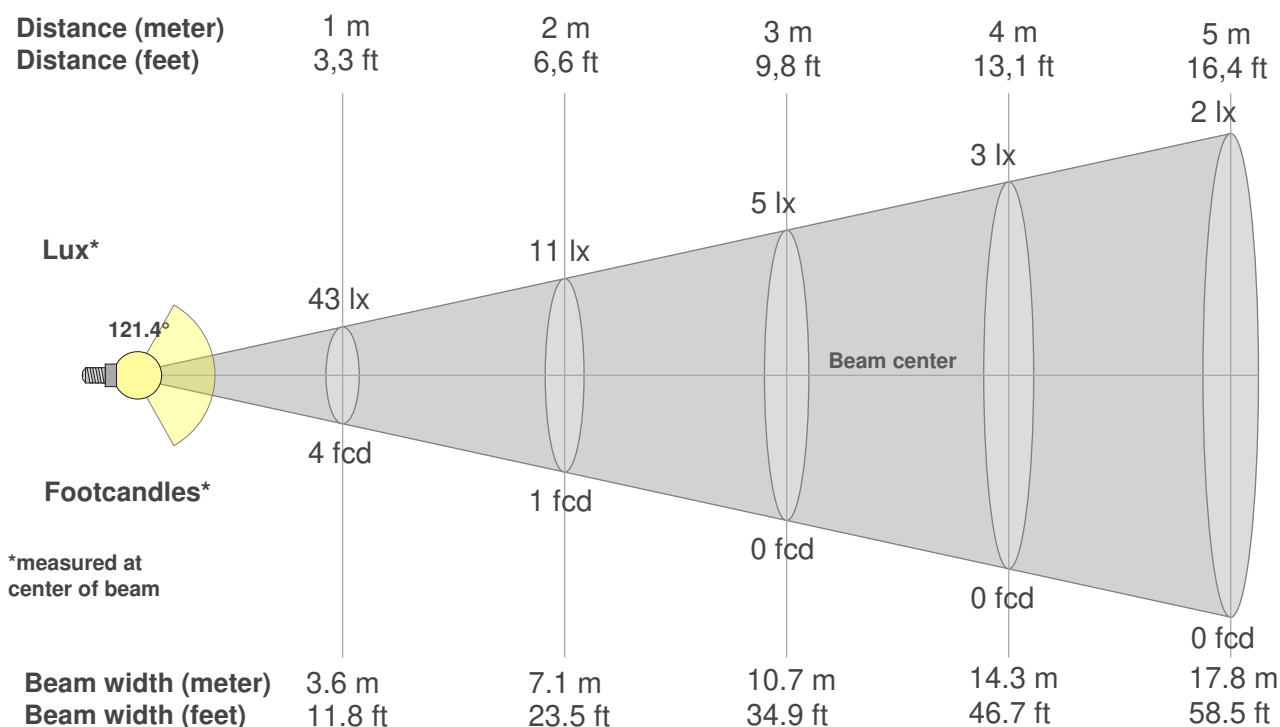
**Rf 0.0**  
Fidelity index Rf

**Rg 0.0**  
Gammut index Rg

Hue Bin	R <sub>f</sub>	Graphic shifts (%)	
		Chroma	Hue
1	0	0%	0%
2	0	0%	0%
3	0	0%	0%
4	0	0%	0%
5	0	0%	0%
6	0	0%	0%
7	0	0%	0%
8	0	0%	0%
9	0	0%	0%
10	0	0%	0%
11	0	0%	0%
12	0	0%	0%
13	0	0%	0%
14	0	0%	0%
15	0	0%	0%
16	0	0%	0%



Color Evaluation Sample



**Beam intensities from 1-20m**

1m	2m	3m	4m	5m	6m	7m	8m	9m	10m	11m	12m	13m	14m	15m	16m	17m	18m	19m	20m
3.3ft	6.6ft	9.8ft	13.1ft	16.4ft	19.7ft	23ft	26.2ft	29.5ft	32.8ft	36.1ft	39.4ft	42.7ft	45.9ft	49.2ft	52.5ft	55.8ft	59.1ft	62.3ft	65.6ft
43lx	11lx	5lx	3lx	2lx	1lx	1lx	1lx	1lx	0lx	0lx	0lx	0lx	0lx	0lx	0lx	0lx	0lx	0lx	0lx
4fcd	1fcd	0.4fcd	0.2fcd	0.2fcd	0.1fcd	0.1fcd	0.1fcd	0fcd	0fcd	0fcd	0fcd	0fcd	0fcd	0fcd	0fcd	0fcd	0fcd	0fcd	0fcd

**Intensities in 0° c-plane**

0°	5°	10°	15°	20°	25°	30°	35°	40°	45°	50°	55°	60°	65°	70°	75°	80°	85°	90°	95°
42.8	42.8	42.2	41.3	40.1	38.6	37.0	35.0	32.7	30.2	27.4	24.7	21.6	18.4	14.8	11.6	7.8	4.5	1.8	0.4
100%	100%	99%	97%	94%	90%	86%	82%	76%	70%	64%	58%	50%	43%	35%	27%	18%	10%	4%	1%

**Intensities in 90° c-plane**

0°	5°	10°	15°	20°	25°	30°	35°	40°	45°	50°	55°	60°	65°	70°	75°	80°	85°	90°	95°
42.8	42.6	42.1	41.0	39.8	38.4	36.4	34.8	32.6	30.2	27.4	25.0	22.2	19.2	16.1	12.7	9.5	6.2	3.6	1.9
100%	100%	98%	96%	93%	90%	85%	81%	76%	71%	64%	58%	52%	45%	38%	30%	22%	15%	8%	4%

**Intensities in 180° c-plane**

0°	5°	10°	15°	20°	25°	30°	35°	40°	45°	50°	55°	60°	65°	70°	75°	80°	85°	90°	95°
42.8	42.7	42.2	41.1	40.0	38.7	36.9	34.8	32.4	30.2	27.4	24.6	21.6	18.4	15.0	11.4	8.0	4.5	1.7	0.5
100%	100%	99%	96%	93%	90%	86%	81%	76%	71%	64%	58%	50%	43%	35%	27%	19%	11%	4%	1%

**Intensities in 270° c-plane**

0°	5°	10°	15°	20°	25°	30°	35°	40°	45°	50°	55°	60°	65°	70°	75°	80°	85°	90°	95°
42.8	42.8	42.3	41.5	40.5	39.1	37.5	35.4	33.0	30.5	27.9	25.3	22.2	19.0	15.7	12.5	9.1	5.7	3.2	1.7
100%	100%	99%	97%	95%	91%	88%	83%	77%	71%	65%	59%	52%	44%	37%	29%	21%	13%	7%	4%

Beam angle 50%	Field angle 10%	Cutoff angle 2,5%	Intensity ratio in 120° cone	Intensity ratio in 90° cone
121.4°	173.3°	194.3°	70.9%	47.1%

# Photometric Details



BOXA-RGB-WSC-DRY-B-SO-ENC-CL-S1-BW-NA

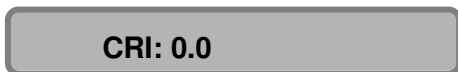
<b>Product name:</b>	BOXA-RGB-WSC-DRY-B-SO-ENC-CL-S1-BW-NA
<b>Date:</b>	9/27/2019
<b>Powering product:</b>	<u>IQ-PH-80-120/24</u>
<b>Output:</b>	25.7 lm/ft
<b>Peak:</b>	6.69 cd
<b>Power:</b>	1.2 W/ft
<b>PF:</b>	1.0



### Light efficiency:



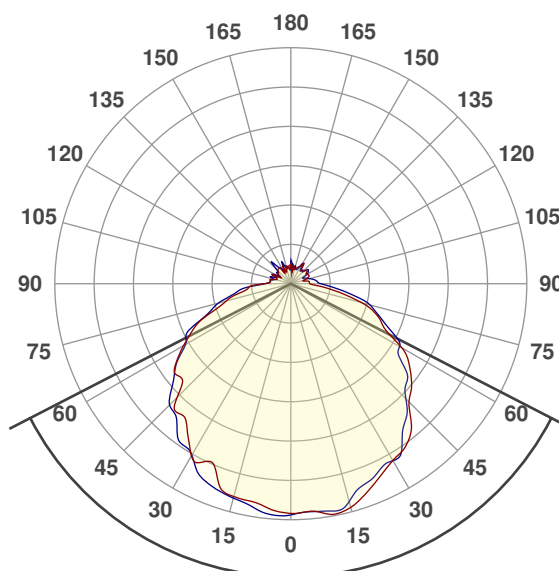
### Light quality:



### Color temperature:



### Beam Angle

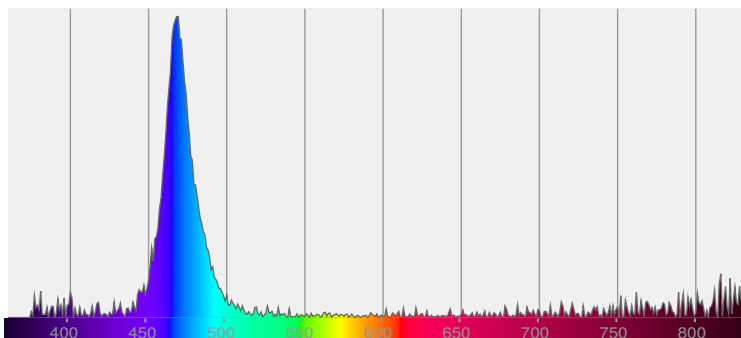


125.4°

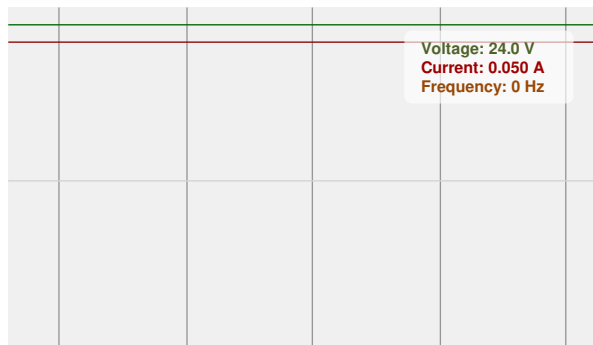
CIE 1931  
x: 0.139  
y: 0.088



### Spectra



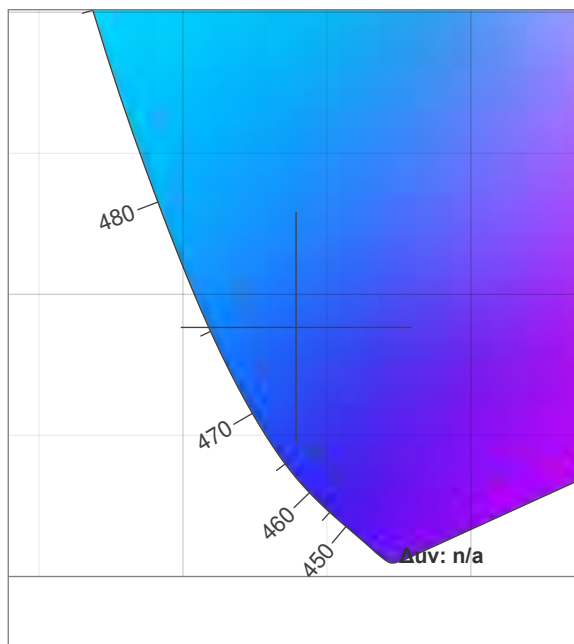
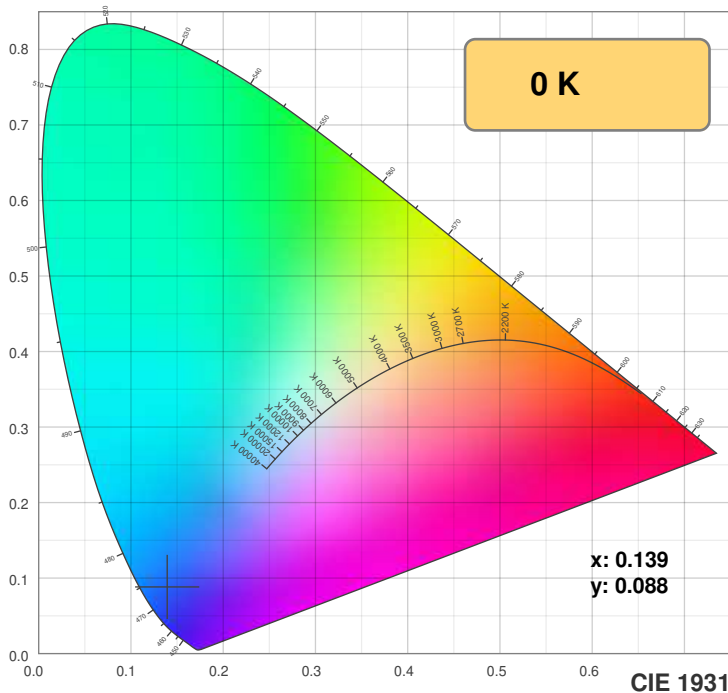
### Power



# Color Details

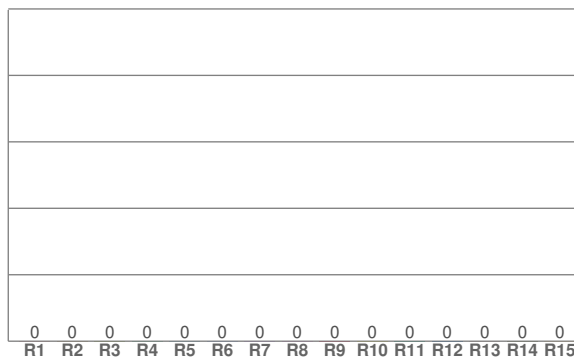
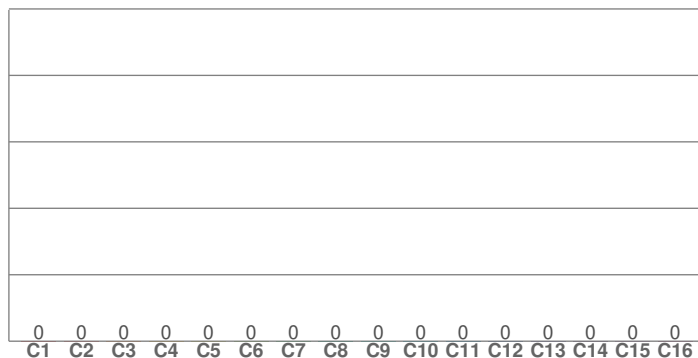


BOXA-RGB-WSC-DRY-B-SO-ENC-CL-S1-BW-NA



TM30: 0.0

CRI: 0.0 (R1-R8)



CRI R values, only R1-R8 are used to calculate final CRI value

R1	R2	R3	R4	R5	R6	R7	R8	R9	R10	R11	R12	R13	R14	R15
0.0	0.0	0.0	0.0	0.0	0.0	0.0	0.0	0.0	0.0	0.0	0.0	0.0	0.0	0.0

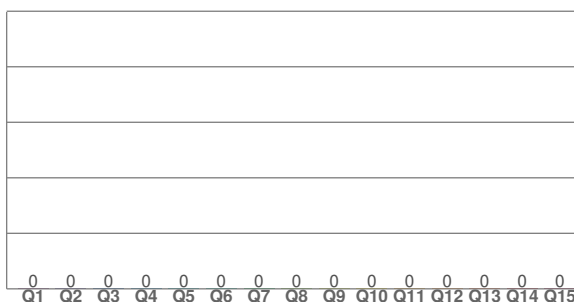
TM30 C values, 16 binned values out of total of 99 C values

C1	C2	C3	C4	C5	C6	C7	C8	C9	C10	C11	C12	C13	C14	C15	C16
0.0	0.0	0.0	0.0	0.0	0.0	0.0	0.0	0.0	0.0	0.0	0.0	0.0	0.0	0.0	0.0

CQS Q values

Q1	Q2	Q3	Q4	Q5	Q6	Q7	Q8	Q9	Q10	Q11	Q12	Q13	Q14	Q15
0.0	0.0	0.0	0.0	0.0	0.0	0.0	0.0	0.0	0.0	0.0	0.0	0.0	0.0	0.0

CQS: 0.0



## Color parameters

Color temperature	Color rendering index	Red component	Color fidelity	Color gamut	Color quality scale	Color coordinate cie 1931	Color coordinate cie 1931	Color coordinate	Color coordinate	Color deviation from black body
CCT	CRI	CRI R9	TM30 Rf	TM30 Rg	CQS	x	y	u	v	$\Delta uv$
0 K	0.0	0.0	0.0	0.0	0.0	0.139	0.088	0.147	0.140	n/a

# TM30 Details

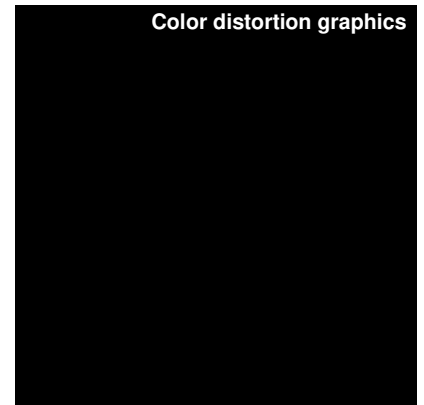
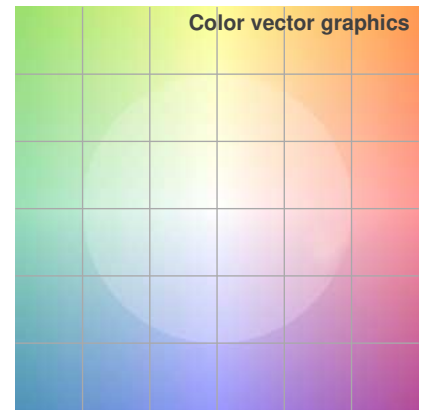
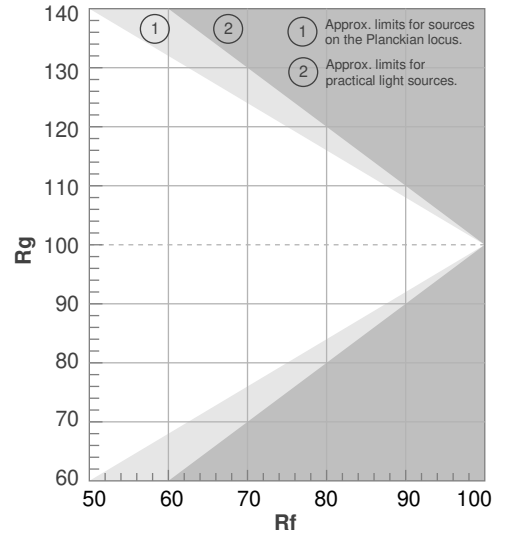


BOXA-RGB-WSC-DRY-B-SO-ENC-CL-S1-BW-NA

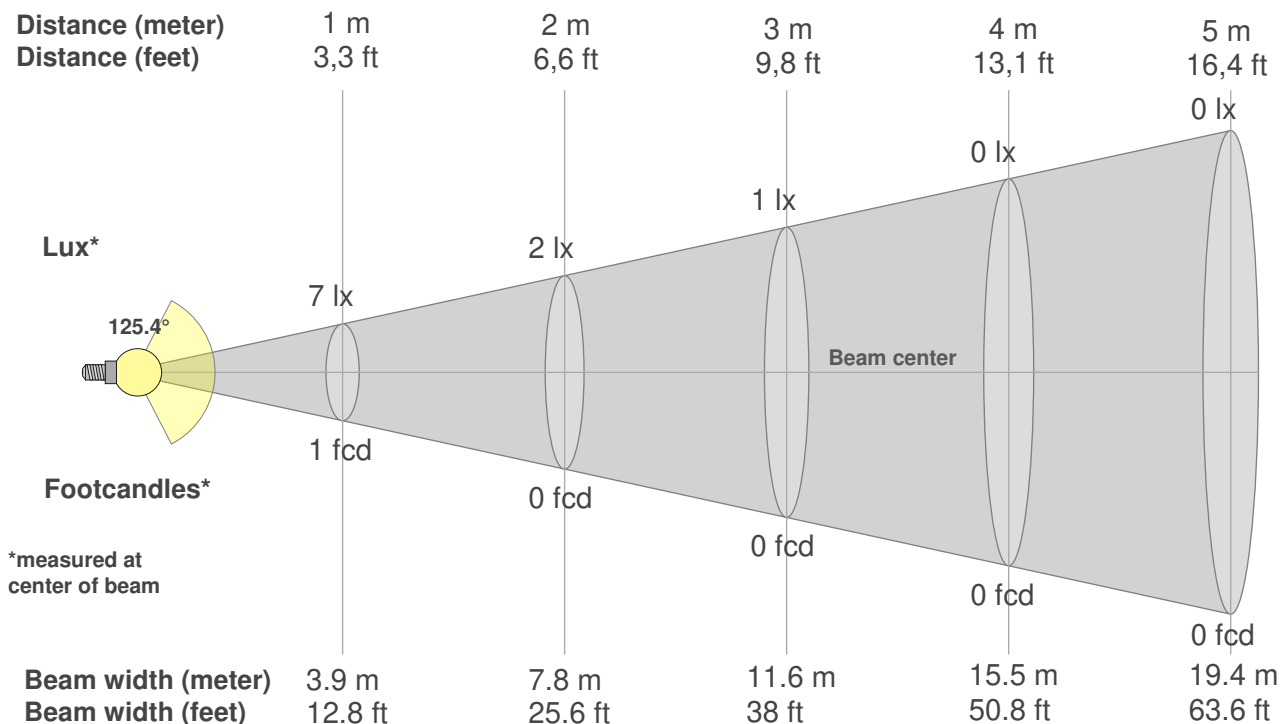
**Rf 0.0**  
Fidelity index Rf

**Rg 0.0**  
Gammut index Rg

Hue Bin	R <sub>f</sub>	Graphic shifts (%)	
		Chroma	Hue
1	0	0%	0%
2	0	0%	0%
3	0	0%	0%
4	0	0%	0%
5	0	0%	0%
6	0	0%	0%
7	0	0%	0%
8	0	0%	0%
9	0	0%	0%
10	0	0%	0%
11	0	0%	0%
12	0	0%	0%
13	0	0%	0%
14	0	0%	0%
15	0	0%	0%
16	0	0%	0%



Color Evaluation Sample



**Beam intensities from 1-20m**

1m	2m	3m	4m	5m	6m	7m	8m	9m	10m	11m	12m	13m	14m	15m	16m	17m	18m	19m	20m
3.3ft	6.6ft	9.8ft	13.1ft	16.4ft	19.7ft	23ft	26.2ft	29.5ft	32.8ft	36.1ft	39.4ft	42.7ft	45.9ft	49.2ft	52.5ft	55.8ft	59.1ft	62.3ft	65.6ft
7lx	2lx	1lx	0lx	0lx	0lx	0lx	0lx	0lx	0lx	0lx	0lx	0lx	0lx	0lx	0lx	0lx	0lx	0lx	0lx
0.6fcd	0.2fcd	0.1fcd	0fcd	0fcd	0fcd	0fcd	0fcd	0fcd	0fcd	0fcd	0fcd	0fcd	0fcd	0fcd	0fcd	0fcd	0fcd	0fcd	0fcd

**Intensities in 0° c-plane**

0°	9°	18°	27°	36°	45°	54°	63°	72°	81°	90°	99°	108°	117°	126°	135°	144°	153°	162°	171°
6.57	6.64	6.45	5.96	5.62	4.78	4.21	3.17	2.42	1.29	0.57	0.49	0.49	0.56	0.57	0.54	0.56	0.56	0.46	0.51
100%	101%	98%	91%	86%	73%	64%	48%	37%	20%	9%	7%	7%	8%	9%	8%	9%	9%	7%	8%

**Intensities in 90° c-plane**

0°	9°	18°	27°	36°	45°	54°	63°	72°	81°	90°	99°	108°	117°	126°	135°	144°	153°	162°	171°
6.57	6.56	6.18	5.83	5.41	4.66	3.99	3.37	2.53	1.64	0.87	0.69	0.51	0.43	0.61	0.48	0.46	0.53	0.46	0.40
100%	100%	94%	89%	82%	71%	61%	51%	39%	25%	13%	10%	8%	7%	9%	7%	7%	8%	7%	6%

**Intensities in 180° c-plane**

0°	9°	18°	27°	36°	45°	54°	63°	72°	81°	90°	99°	108°	117°	126°	135°	144°	153°	162°	171°
6.57	6.33	6.20	5.71	5.08	4.59	4.07	3.24	2.17	1.39	0.83	0.60	0.43	0.56	0.48	0.52	0.54	0.45	0.44	0.47
100%	96%	94%	87%	77%	70%	62%	49%	33%	21%	13%	9%	7%	8%	7%	8%	8%	7%	7%	7%

**Intensities in 270° c-plane**

0°	9°	18°	27°	36°	45°	54°	63°	72°	81°	90°	99°	108°	117°	126°	135°	144°	153°	162°	171°
6.57	6.49	6.27	5.93	5.46	4.88	4.06	3.33	2.38	1.57	0.74	0.59	0.59	0.52	0.45	0.61	0.58	0.39	0.49	0.49
100%	99%	95%	90%	83%	74%	62%	51%	36%	24%	11%	9%	9%	8%	7%	9%	9%	6%	8%	8%

<b>Beam angle 50%</b>	<b>Field angle 10%</b>	<b>Cutoff angle 2,5%</b>	<b>Intensity ratio in 120° cone</b>	<b>Intensity ratio in 90° cone</b>
<b>125.4°</b>	<b>273.4°</b>	<b>360°</b>	<b>61.6%</b>	<b>40.6%</b>