

Photometric Details

iQ67-30-FLM-80-1.4



Product name: iQ67-30-FLM-80-1.4	
Date: 10/2/2018	
Powering product: IQ-PH-80-120/24	
<hr/>	
Output:	53.8 lm/ft
Peak:	15.3 cd
Power:	1.5 W/ft
PF:	1.0



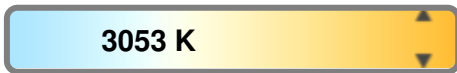
Light efficiency:



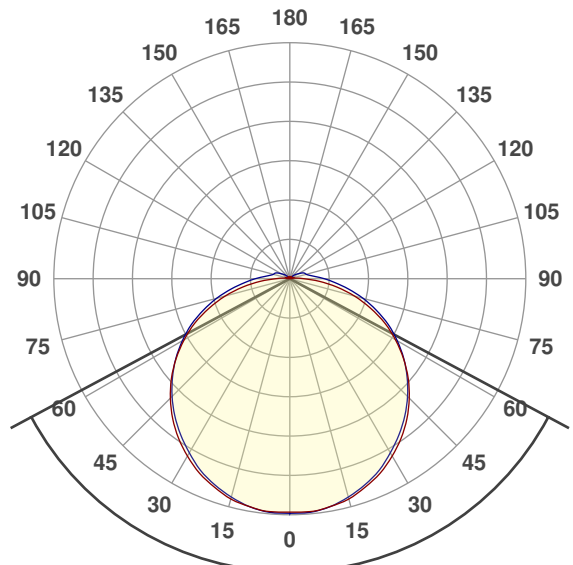
Light quality:



Color temperature:



Beam Angle

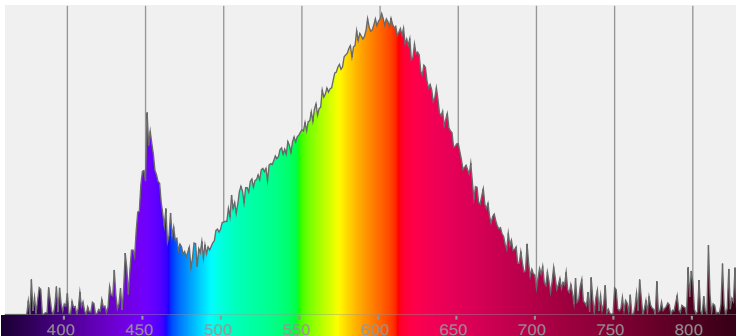


123.7°

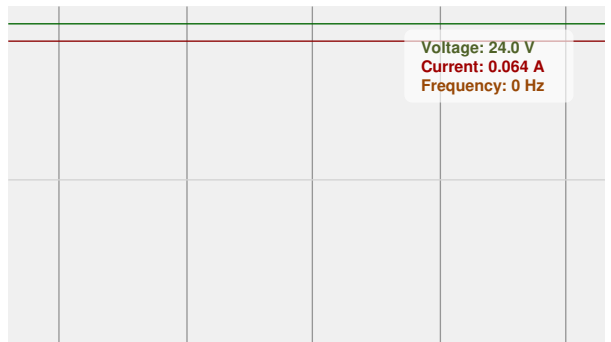
CIE 1931
x: 0.435
y: 0.406



Spectra



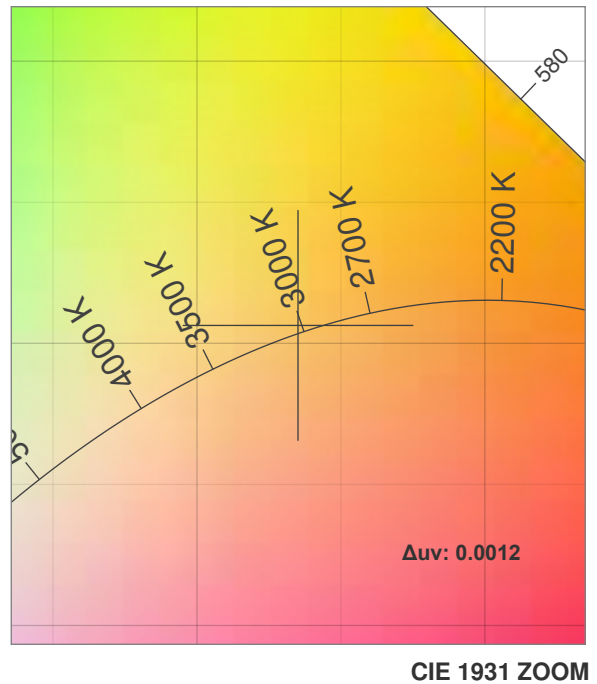
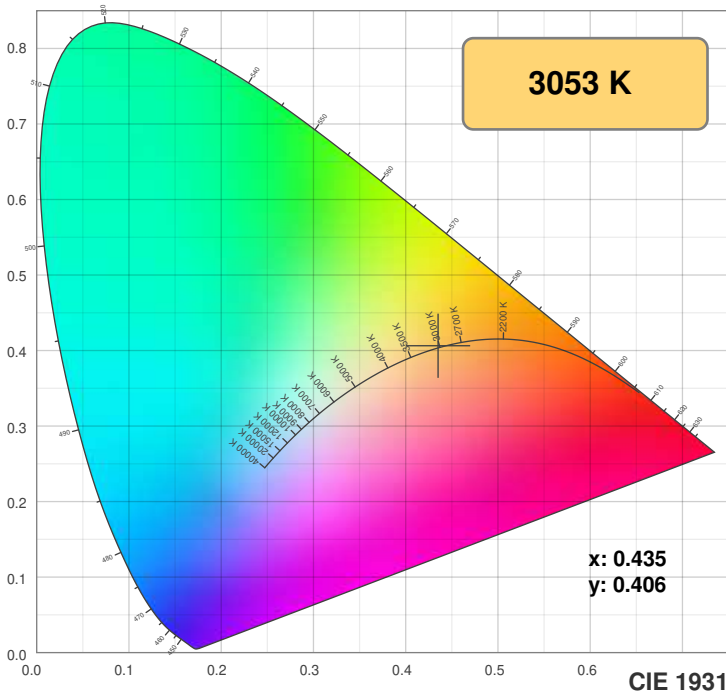
Power



Voltage: 24.0 V
Current: 0.064 A
Frequency: 0 Hz

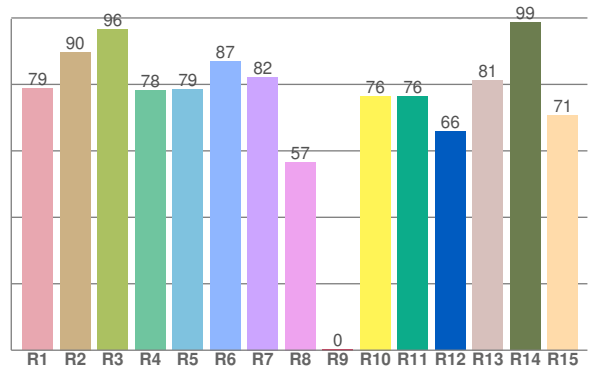
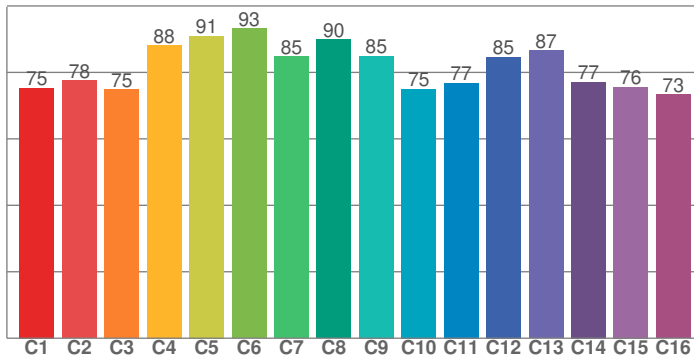
Color Details

iQ67-30-FLM-80-1.4



TM30: 81.7

CRI: 80.9 (R1-R8)



CRI R values, only R1-R8 are used to calculate final CRI value

R1	R2	R3	R4	R5	R6	R7	R8	R9	R10	R11	R12	R13	R14	R15
78.7	89.8	96.4	78.1	78.6	87.1	82.2	56.6	0.3	76.5	76.4	65.9	81.3	98.6	70.6

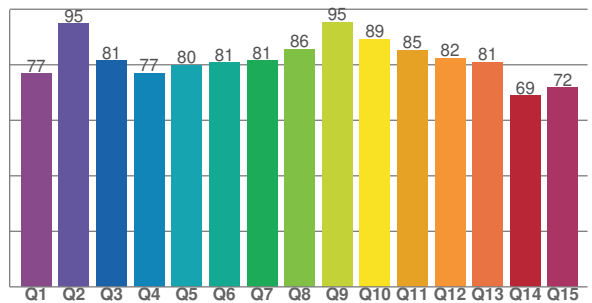
TM30 C values, 16 binned values out of total of 99 C values

C1	C2	C3	C4	C5	C6	C7	C8	C9	C10	C11	C12	C13	C14	C15	C16
75.4	77.5	74.9	88.2	90.9	93.2	84.7	89.8	85.0	75.0	76.8	84.6	86.6	77.1	75.6	73.4

CQS Q values

Q1	Q2	Q3	Q4	Q5	Q6	Q7	Q8	Q9	Q10	Q11	Q12	Q13	Q14	Q15
76.9	94.8	81.5	77.0	79.9	80.8	81.5	85.6	95.4	89.3	85.2	82.4	80.9	68.9	71.7

CQS: 80.6



Color parameters

Color temperature	Color rendering index	Red component	Color fidelity	Color gamut	Color quality scale	Color coordinate cie 1931	Color coordinate cie 1931	Color coordinate	Color coordinate	Color diviation from black body
CCT	CRI	CRI R9	TM30 Rf	TM30 Rg	CQS	x	y	u	v	Δuv
3053 K	80.9	0.3	81.7	94.3	80.6	0.435	0.406	0.248	0.348	0.0012

TM30 Details

iQ67-30-FLM-80-1.4



Rf 81.7
Fidelity index Rf

Rg 94.3
Gammut index Rg

Hue Bin	R _i	Graphic shifts (%)	
		Chroma	Hue
1	75	-12%	0%
2	78	-9%	7%
3	75	-4%	11%
4	88	0%	6%
5	91	-1%	3%
6	93	1%	-3%
7	85	-6%	-6%
8	90	-5%	0%
9	85	-7%	6%
10	75	-5%	12%
11	77	0%	14%
12	85	8%	2%
13	87	5%	-7%
14	77	5%	-16%
15	76	-3%	-14%
16	73	-9%	-16%

