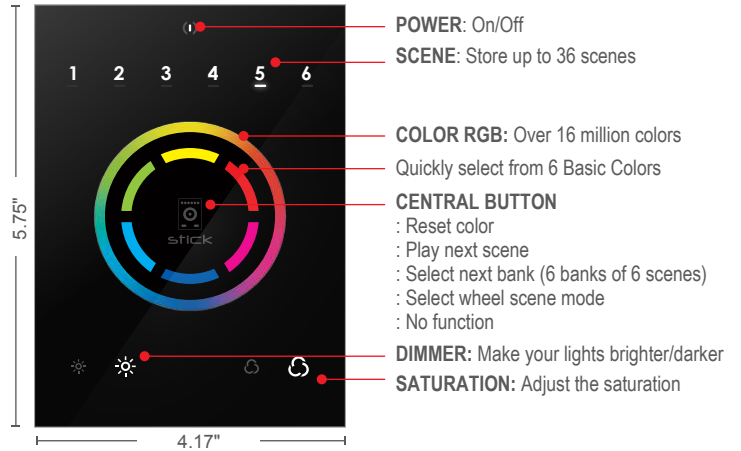




# iQ-DMX-STICK-CW4

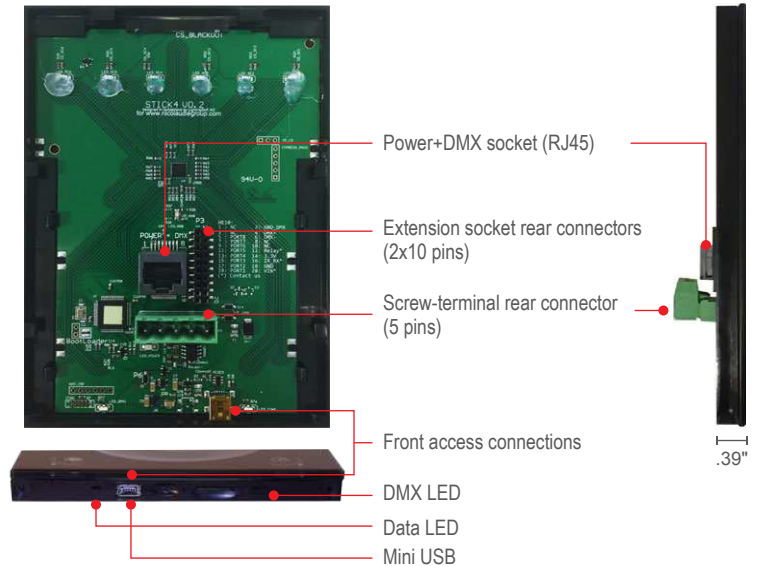
**iQ-DMX-STICK-CW4** controller is a DMX based controller aimed at architectural lighting installations requiring an advanced level of programming options (color changing effects, specific colors etc). The controller has been engineered to meet the needs of lighting designers, while providing a clean and user-friendly panel. Featuring an on/off button, 6 scene buttons and a color wheel.

Use ESA2 software to control your lighting scenes on your PC or Mac Computer. This robust controller is capable of storing up to 36 scenes in multi-rooms, 12 of which can be recalled on the actual controller itself. iQ-DMX-STICK-CW4 is an ideal solution for hotels, homes and public environments.



## FEATURES

- DMX512 Output
- Windows / Mac software to set dynamic colors / effects
- 512 DMX channels. Control 170 RGB fixtures
- Store up to 36 dynamic or static scenes
- 12 touch-sensitive buttons. No mechanical parts
- Color palette (can also be used for scene selection)
- Touch-sensitive wheel allows for accurate color selection
- Sleek black glass design which sits 0.39" from the wall
- Built-in flash memory for storing programs
- USB connectivity for programming and control
- Live Control: Color, Dimmer, Saturation
- 5-10VDC 0.6A Input
- 8 dry contact trigger ports
- Multi-zone 76K memory
- Operating Temperature: 14°F - 113°F
- Dimensions: 5.75" x 4.17" x 0.39"
- Weight: 0.44 lbs
- EC, EMC, ROHS Standards



20181030-V1

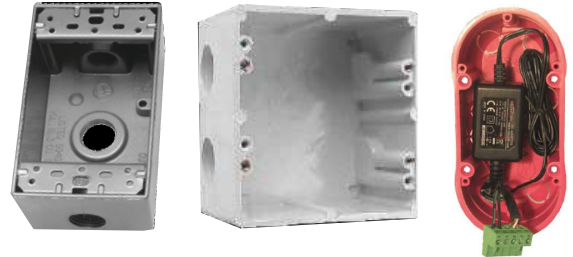
PROJECT NAME	DATE	COMPANY	TYPE	NOTE



# iQ-DMX-STICK-CW4 INSTALLATION

## 1 MOUNT AN ELECTRICAL BOX INSIDE THE WALL

The controller can be installed in a standard electrical backbox. This box is usually 3.29" high and 2.36" wide. You can insert the AC/DC adapter inside or outside the backbox.



## 2 CONNECT THE WIRES

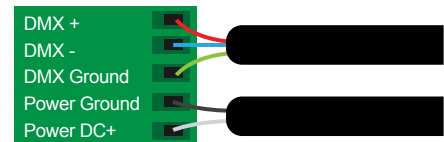
**POWER:** Connect a 5-10V 0.6A AC/DC supply. Be sure to not invert the + and the ground.

**DMX:** Connect the DMX cable to the lighting receivers (LEDs, Dimmers, Fixtures..) (for XLR: 1 = ground, 2 = DMX-, 3 = DMX+) There are 2 ways to connect the power and DMX:

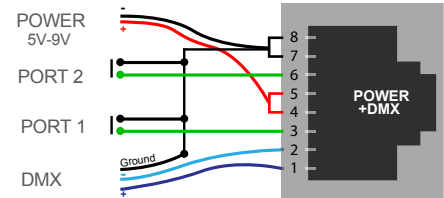
**NOTE:**

- Check Pin Configurations. Applying Power To The DMX Input Will Damage The Controller.
- Make Sure The Controller Is Mounted Flat Without Obstructions From Behind As This Can Push Apart The Glass .

### Connector Block



### RJ45



## 3 MOUNT AN ELECTRICAL BOX INSIDE THE WALL

- Mount the back side of the interface on the wall with 2 or more screws
- Plug the connectors :
  - DMX and power (connector block)
  - Ethernet cable

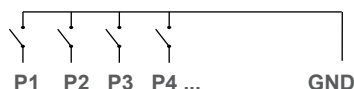
The front panel is mounted by clipping the 2 tabs along the top edge to the back plate and then arching down. 1 screw should be attached underneath to hold the controller in place.

## OTHER CONNECTIONS

### Dry Contact Port Triggering

It is possible to start scenes using the dry contract input ports available on the HE10 extension socket. To activate a port, a brief contact of atleast 1/25 second must be established between the ports (1...8) and the ground (GND).

**NOTE:** The scene will not be switched off when the switch is released.



### HE10 EXTENSION socket

NC	1	2	GND_DMX
NC	3	4	DMX+
PORT8	5	6	DMX-
PORT7	7	8	NC
PORT6	9	10	NC
PORT5	11	12	NC
PORT4	13	14	NC
PORT3	15	16	NC
PORT2	17	18	GND
PORT1	19	20	VIN

Compatible header connectors:  
 WURTH ELEKTRONIK ref: 61301021121  
 MOLEX ref: 10-89-7202  
 TE Connectivity ref: 1-87227-0  
 FCI ref: 77313-101-20LF  
 HARWIN ref: M20-9981046  
 SAMTEC ref: TSW-110-xx-T-D  
 FARNELL ref: 1841232  
 RS ref: 763-6754 673-7534 251-8165  
 MOUSER ref: 538-10-89-7202  
 DIGIKEY ref: WM26820-ND

