



# RESOURCE GUIDE

## EXTRUSIONS - SURFACE - TRE3

Model: iQA



### FINISH

#### SATIN



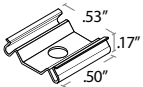
SATIN ANODIZED  
MATTE FINISH  
METALLIC ENDCAPS

### MOUNTING TYPE - SURFACE



### MOUNTING - HARDWARE

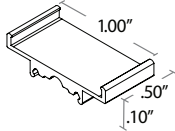
#### Hidden Stainless Steel (HSS)



2 clips provided for 4' or less;  
4 clips provided for greater than 4'

- Stainless Steel
- Indoor/Outdoor
- #4 x 5/8" Flat Head SS (1 per clip included)

#### Plastic T-Bar (TRE3-TBC)



Standard 1"(15/16) grid Clips  
2 clips provided per first 12",  
1 clip provided per additional foot

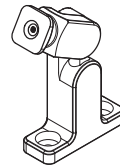
- Plastic

#### 832 (see Accessory cutsheet)



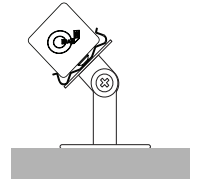
- Strong adhesive
- Not submersible, For dry and wet locations only

#### Q-ANGLE (see Accessory cutsheet)



- Adjustable mounting bracket
- Indoor/Outdoor

#### PIVOT BRACKET (see Accessory cutsheet)



- Adjustable mounting bracket
- Indoor

### LENS

DF Diffused



# RESOURCE GUIDE

## EXTRUSIONS - SURFACE - TRE3

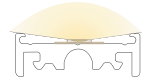
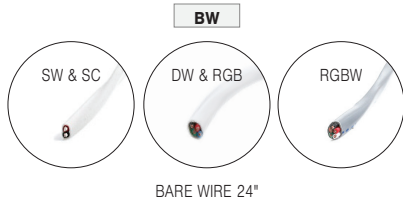
Model: iQA



### CONNECTORS/WIRE

STATIC WHITE AND STATIC COLOR ONLY

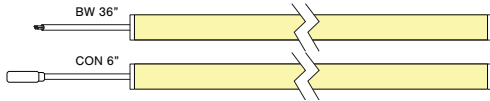
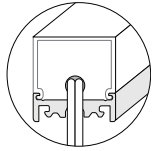
### LIGHT ORIENTATION



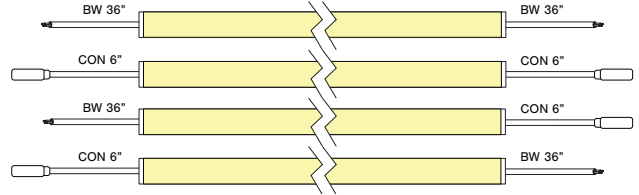
SYMMETRICAL

**TYPE** To order a bare extrusion without a strip installed in Q-Tran factory, choose **NI** (Not Installed) for your Type option

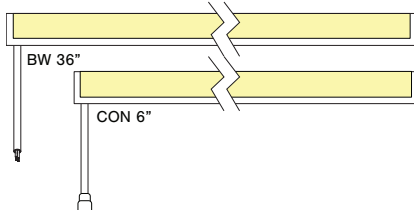
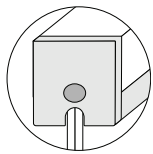
**S1 - Input only**



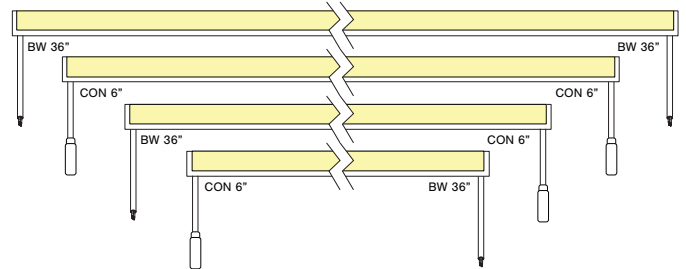
**P1 - Input/Output**



**S2 - Input only**



**P2 - Input/Output**



# RESOURCE GUIDE - COMPATIBILITY

## EXTRUSIONS & STRIPS



### STRIP AND EXTRUSION COMPATIBILITY

EXTRUSIONS	STATIC WHITE 1.5 - 7.5 W/ft				DYNAMIC WHITE 6.0 W/ft				STATIC COLOR 5.0 W/ft				RGB 5.3 W/ft				RGBW 6.0 W/ft				
	DRY	DMP	WET	ENC	DRY	DMP	WET	ENC	DRY	DMP	WET	ENC	DRY	DMP	WET	ENC	DRY	DMP	WET	ENC	
SLIM	◆	◆	◇	✗	✓	✓	✗	✗	✓	✓	◇	✗	✓	✗	✗	✗	✗	✗	✗	✗	✗
WIDE	✓	◆	◆	✗	✓	✓	✓	✗	✓	✓	✓	✗	✓	✗	✓	✗	✓	✓	✓	✗	
ROND	✓	◆	✗	✗	✓	✓	✗	✗	✓	✓	✗	✗	✓	✗	✗	✗	✗	✗	✗	✗	
VEGA	✓	◆	✗	✗	✓	✓	✗	✗	✓	✓	✗	✗	✓	✗	✗	✗	✗	✗	✗	✗	
TORQ	✓	◆	◆	◆	✓	✓	✗	✓	✓	✓	✓	✓	✓	✗	✗	✓	✗	✗	✗	✗	
TRE3	✓	◆	◆	✗	✓	✓	✗	✗	✓	✓	✓	✗	✓	✗	✗	✗	✓	✓	✗	✗	
ARKA	✓	◆	◆	✗	✓	✓	✓	✗	✓	✓	✓	✗	✓	✗	✓	✗	✓	✓	✗	✗	
TELA	✓	◆	◆	✗	✓	✓	✓	✗	✓	✓	✓	✗	✓	✗	✓	✗	✓	✓	✗	✗	
VEVE	✓	◆	◆	✗	✓	✓	✗	✗	✓	✓	✓	✗	✓	✗	✗	✗	✓	✓	✗	✗	
FLUR	✓	◆	◆	◆	✓	✓	✗	✓	✓	✓	✓	✓	✓	✗	✗	✓	✗	✗	✗	✗	
LATO	✓	◆	◆	◆	✓	✓	✗	✓	✓	✓	✓	✓	✓	✗	✗	✓	✗	✗	✗	✗	
LALO	✓	◆	◆	◆	✓	✓	✓	✓	✓	✓	✓	✓	✓	✗	✓	✓	✓	✓	✗	✓	
TALO	✓	◆	◆	◆	✓	✓	✓	✓	✓	✓	✓	✓	✓	✗	✓	✓	✓	✓	✗	✓	
MDIN	◆	◆	✗	✗	✗	✗	✗	✗	✗	✗	✗	✗	✗	✗	✗	✗	✗	✗	✗	✗	

- ◆ = NOT Compatible with 6.0 & 7.5 strips
- ◇ = Wet rated but with no lens
- ✓ = Compatible
- ✗ = NOT Compatible

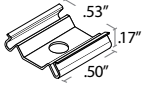
# MOUNTING INSTALLATION

## EXTRUSIONS - SURFACE - TRE3

Model: iQA

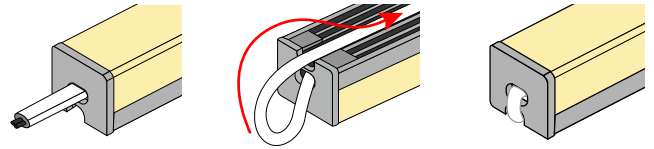


**MOUNTING** NOTE: 2 clips provided for 4' or less;  
4 clips provided for greater than 4'



TRE3-HSS  
Hidden Stainless Steel

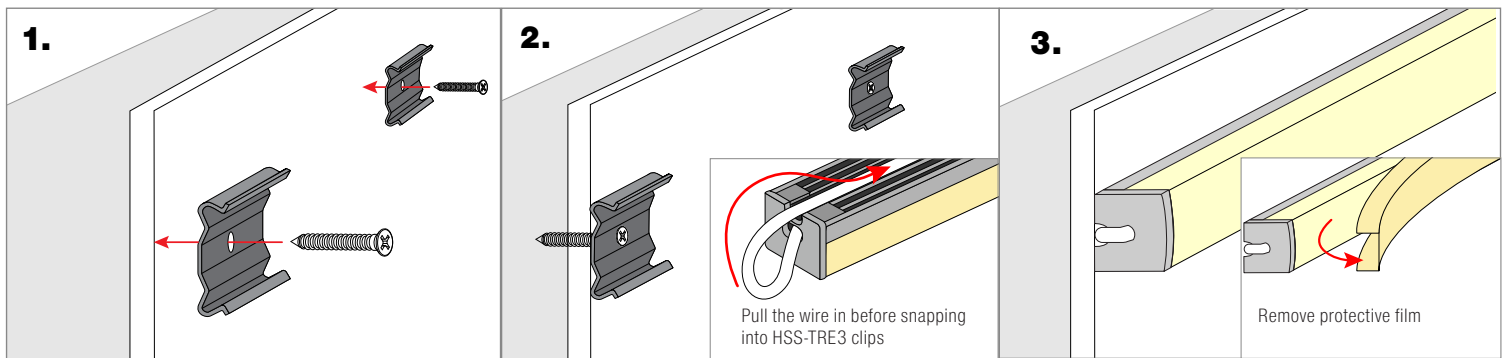
### WIRE WAY



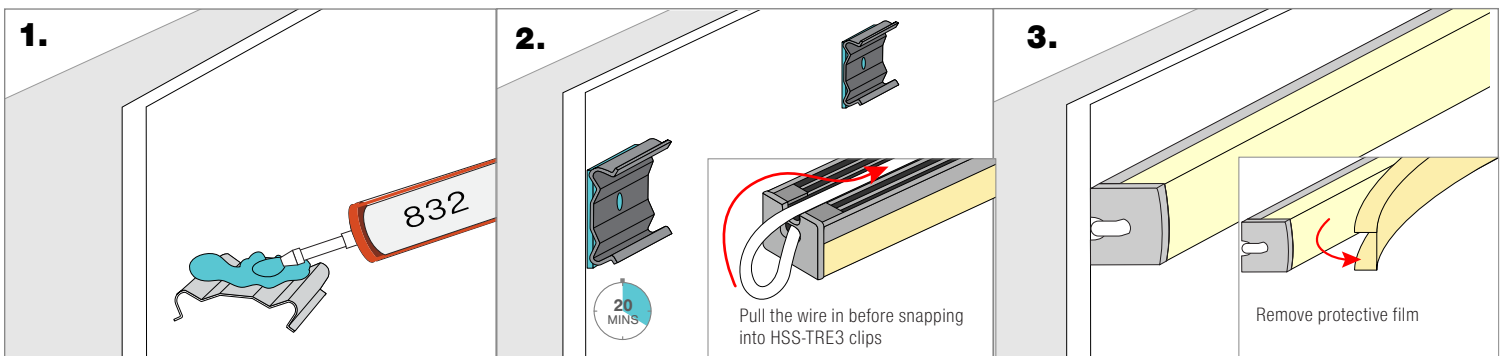
To utilize the TRE 3's wire way, pull the wire and snap the TRE3 onto the HSS-TRE3 Clip to hold the wire down

**NOTE:** Wireway only works with our outdoor WET RATED wire

### Screw Mounting



### 832 Silicone Mounting



**NOTE:** 832 Silicone use in a well-ventilated area, 832 Silicone sold with Caulking gun. Do not use in any submersible applications.

**NOTES:** • Field modifications must comply with Q-Tran's installation methods otherwise warranty is null and void

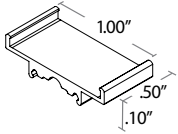
# MOUNTING INSTALLATION

## EXTRUSIONS - SURFACE - TRE3

Model: iQA

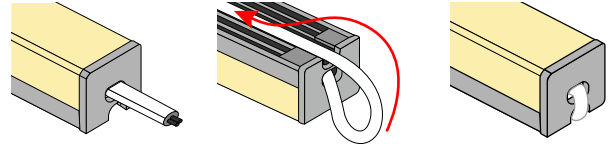


**MOUNTING** NOTE: Standard 1"(15/16) grid Clips  
: 2 clips provided per first 12",  
1 clip provided per additional foot



TRE3-TBC  
Plastic T-Bar

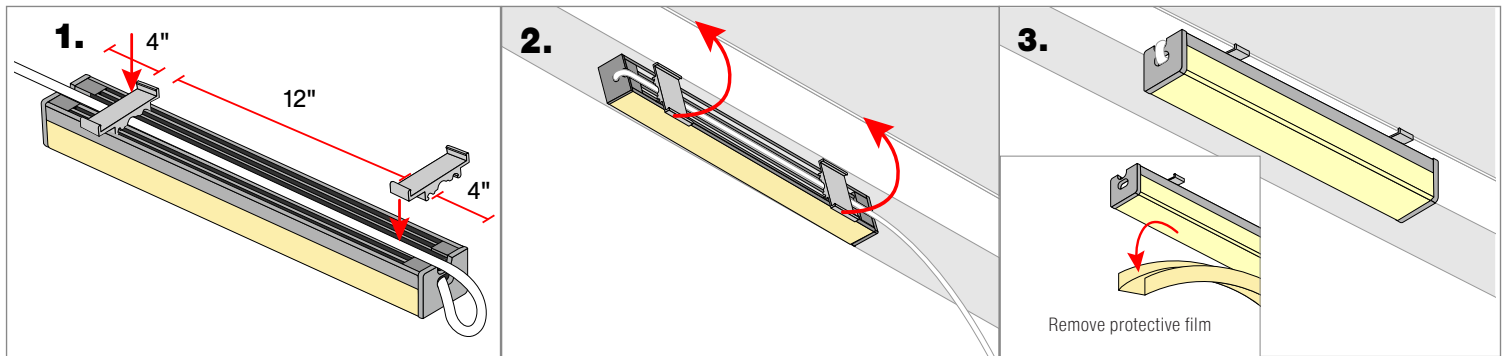
### WIRE WAY



To utilize the TRE 3's wire way, pull the wire and insert the TBC-TRE3 clip onto the bottom track to hold the wire down

**NOTE:** Wireway only works with our outdoor WET RATED wire

### Mounting Clip



Clip on the T-BAR clips 4" inward from each end, and then 12" apart for the full length

**NOTES:** • Field modifications must comply with Q-Tran's installation methods otherwise warranty is null and void