

RESOURCE GUIDE

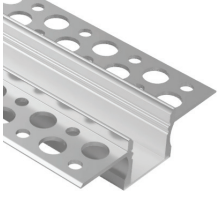
EXTRUSIONS - FLANGED - MDIN - S

Model: iQA



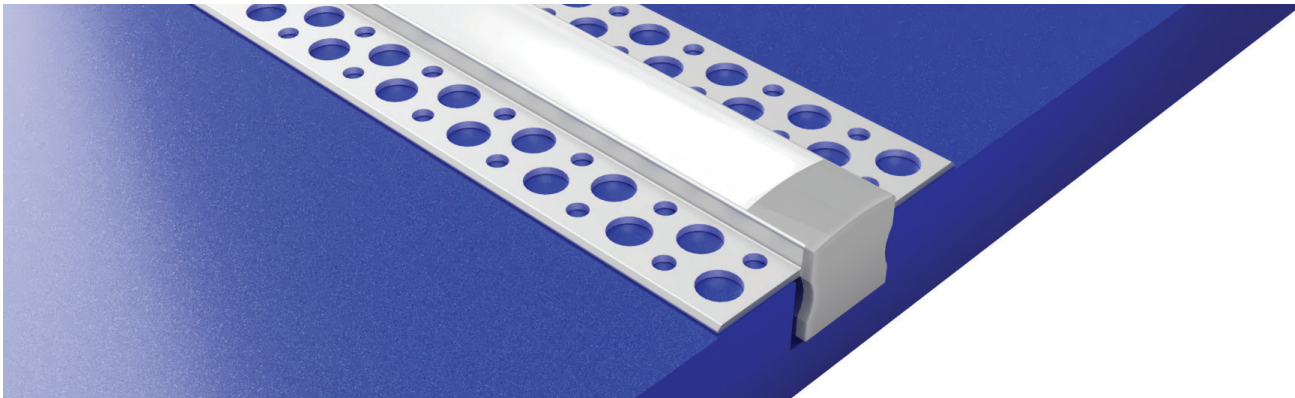
FINISH

SATIN



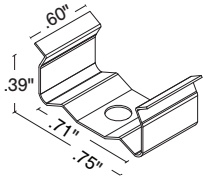
SATIN ANODIZED
MATTE FINISH
GREY ENDCAPS

MOUNTING TYPE - SURFACE



MOUNTING - HARDWARE

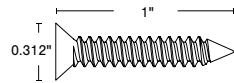
Stainless Steel Clip (MDIN-SST)



2 clips provided for 4' or less;
4 clips provided for greater than 4'

- Stainless Steel
- Indoor/Outdoor
- #4 x 5/8" Flat Head SS
(1 per clip included)

Stainless Steel Screw



#8 x 1" Flat Head Screw

- Stainless Steel
- Indoor/Outdoor

NOTE: Dry wall anchors are recommended.

832



- Strong adhesive
- Non submersible, for dry and wet locations

LENS

DF Diffused



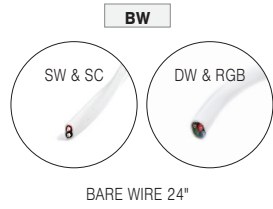
RESOURCE GUIDE

EXTRUSIONS - FLANGED - MDIN - S

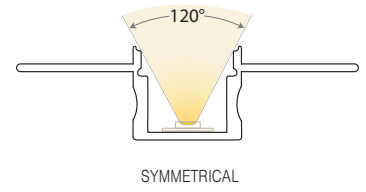
Model: iQA



CONNECTORS/WIRE



LIGHT ORIENTATION



TYPE To order a bare extrusion without a strip installed in Q-Tran factory, choose **NI** (Not Installed) for your Type option

S1 - Input only

