

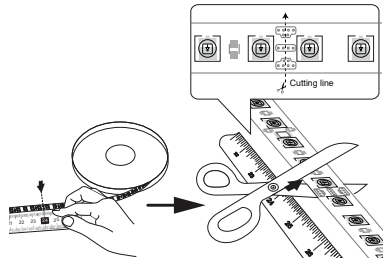
INSTALLATION STRIP



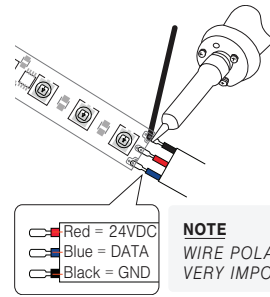
LEAD WIRE & JUMPER

Materials - Lead Wire	
(1)	18" Lead Wire
(1)	6" Solder
(1)	1" Shrink Tube
(1)	1/2" Shrink Tube
Materials - Jumper	
(1)	6" Lead Wire
(1)	6" Solder
(2)	1" Shrink Tube
(2)	1/2" Shrink Tube

1 Measuring & Cutting

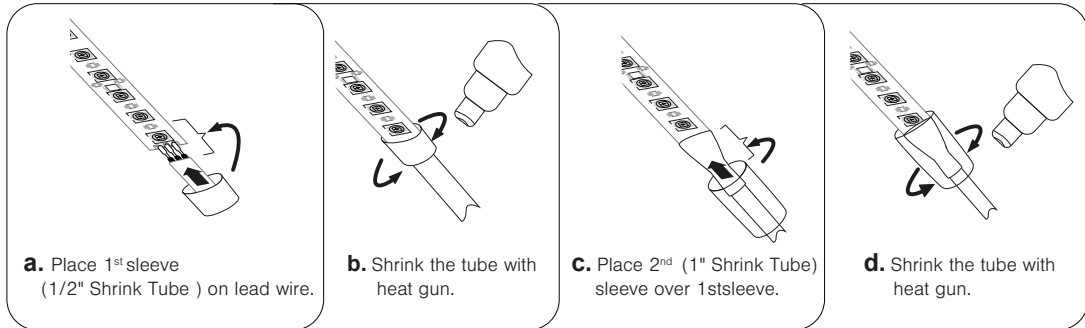


2 Solder lead wire onto terminal



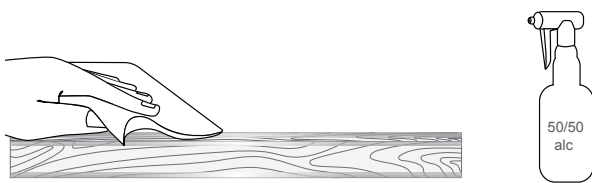
MUST USE
QTM-eLED+IA
POWER SUPPLY

3

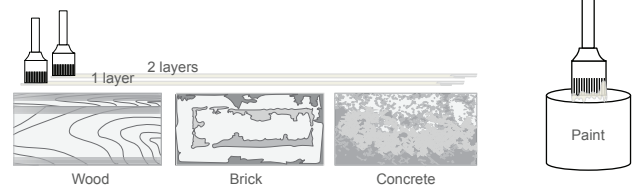


For Jumper,
Repeat Steps 3b & 3c

SURFACE PREPARATION



Thoroughly clean the area where the tape lights will be installed. Using a 50/50 alcohol mix, clean the area where LEDs will be applied and allow time for alcohol to dry, roughly 5 minutes.



For porous materials (wood, brick, concrete) apply two layers of paint or primer to the surface. This will help create a better bonding surface for these materials. This can be purchased from your local hardware store.



Apply 3M Primer 94 to surface where LED tape lights will be installed to increase bonding power. A second coat can be applied once first coat has dried. For best results with a porous material, apply the paint as described in step 3 and two layers of Primer 94.

Temperature and Environmental concerns:

- Ideal application environment is 70-100° in 50% humidity
- Absolute minimum temperature: 50°F
- This temperature and humidity should be maintained for 72 hours after application for maximum holding force.

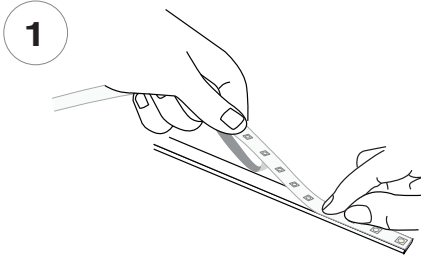
NOTES: • Field modifications must comply with Q-Tran's installation methods otherwise warranty is null and void

INSTALLATION STRIP

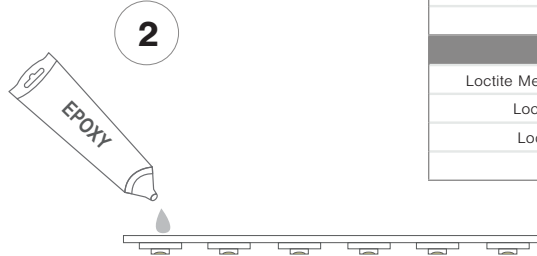


STRIP SURFACE INSTALLATION

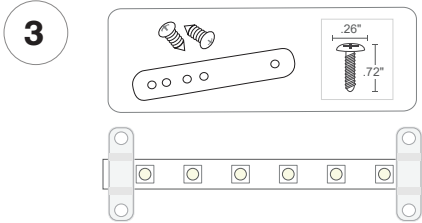
Materials
Concrete, Stone, Cinderblock, Metal & Brick
ABS, Fiberglass, Plastic, and PVC
Tile, Wood, Ceramic, Glass, or Metal
All Purpose
Suggested
Loctite Metal and Concrete Two-Part Epoxy
Loctite Plastic Two-Part Epoxy
Loctite Clear Two-Part Epoxy
Strong Stik



1 Remove the backing from the adhesive and apply firm pressure to the bonding surface.



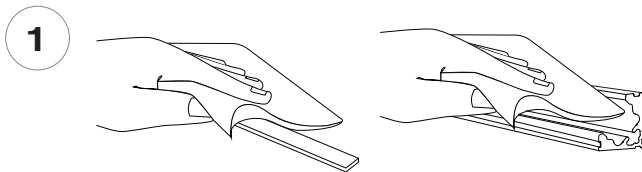
2 For Improved bonding performance, apply small amounts of epoxy at each end to increase holding force.



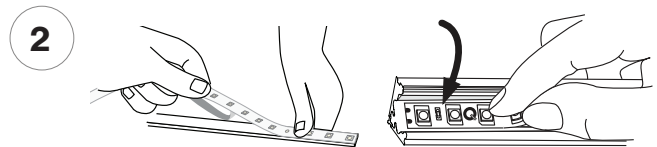
3 Install clips if they are being used. Install a strap every 12" to secure.

4 Allow adhesive to bond for up to 72 hours.

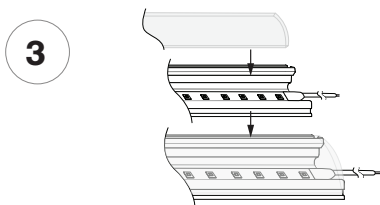
STRIP/EXTRUSION ASSEMBLY



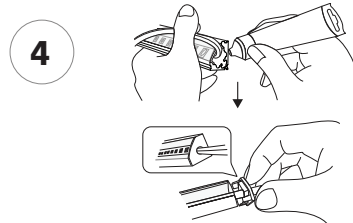
1 Using a 50/50 alcohol mix, thoroughly clean the surface of the extrusion and the multi-tray surface, allow time to dry (about 5 minutes).



2 Gently place LED in Extrusion/Tray. Apply firm pressure to the bonding surface. Do not remove more of the backing than is needed.



3 Start applying uniform pressure until the two panels (extrusion & lens) snap securely together.



4 Add glue inside the cap and glue around to secure End Cap in place.

NOTES: • Field modifications must comply with Q-Tran's installation methods otherwise warranty is null and void