

RESOURCE GUIDE

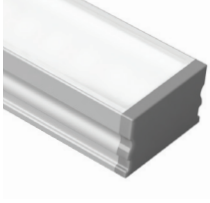
EXTRUSIONS - SURFACE - LALO

Model: iQA



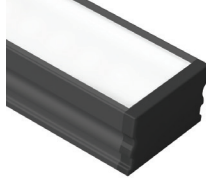
FINISH

SATIN



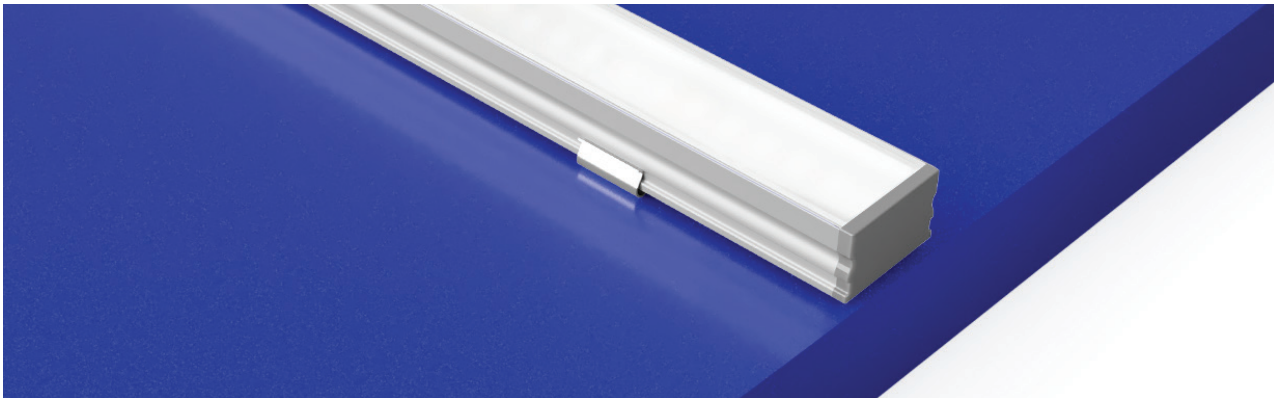
SATIN ANODIZED
MATTE FINISH
GREY ENDCAPS

BLACK



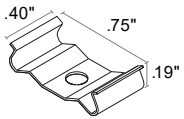
BLACK ANODIZED
MATTE FINISH
BLACK ENDCAPS

MOUNTING TYPE - SURFACE



MOUNTING - HARDWARE

Stainless Steel (LALO-SS)



2 clips provided for 4' or less;
4 clips provided for greater than 4'

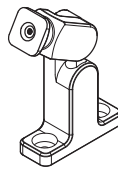
- Stainless Steel
- Indoor/Outdoor
- #4 x 5/8" Flat Head SS (1 per clip included)

832 (see Accessory cutsheet)



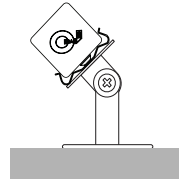
- Strong adhesive
- Not submersible, For dry and wet locations only

Q-ANGLE (see Accessory cutsheet)



- Adjustable mounting bracket
- Indoor/Outdoor

PIVOT BRACKET (see Accessory cutsheet)



- Adjustable mounting bracket
- Indoor

LENS

CL Clear

FR Frosted

PR Polar

DF Diffused



ENC/CL Encapsulated in Clear

ENC/TL Encapsulated in Translucent

RESOURCE GUIDE

EXTRUSIONS - SURFACE - LALO

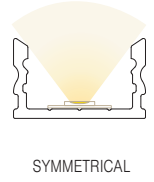
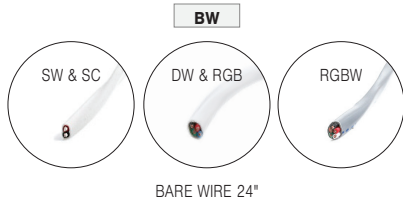
Model: iQA



CONNECTORS/WIRE

STATIC WHITE AND STATIC COLOR ONLY

LIGHT ORIENTATION



TYPE To order a bare extrusion without a strip installed in Q-Tran factory, choose **NI** (Not Installed) for your Type option

