

# RESOURCE GUIDE

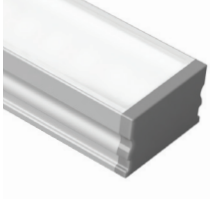
## EXTRUSIONS - SURFACE - LALO

Model: iQA



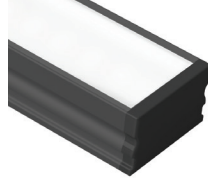
### FINISH

SATIN



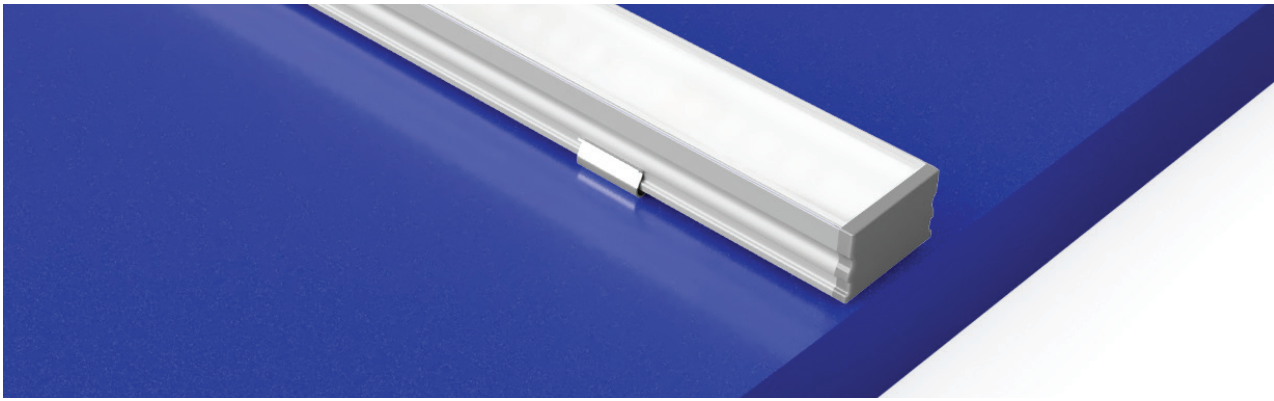
SATIN ANODIZED  
MATTE FINISH  
GREY ENDCAPS

BLACK



BLACK ANODIZED  
MATTE FINISH  
BLACK ENDCAPS

### MOUNTING TYPE - SURFACE



### MOUNTING - HARDWARE

<p><b>Stainless Steel Clip</b> (LALO-SST)</p> <p>2 clips provided for 4' or less; 4 clips provided for greater than 4'</p> <ul style="list-style-type: none"> <li>- Stainless Steel</li> <li>- Indoor/Outdoor</li> <li>- #4 x 5/8" Flat Head SS (1 per clip included)</li> </ul>	<p><b>Magnet Clip</b> (LALO-MG)</p> <p>1 Magnet clip per foot</p> <ul style="list-style-type: none"> <li>- Stainless Steel</li> <li>- Neodymium magnet</li> <li>- Indoor</li> </ul>	<p><b>Magnet Mount Accessory</b> (LALO-MMA)</p> <p>Sold separately</p> <ul style="list-style-type: none"> <li>- Steel Bracket</li> <li>- Indoor</li> <li>- #6 x 5/8" Flat Head SS (2 per bracket included)</li> </ul>	<p><b>832</b> (see Accessory cutsheet)</p> <ul style="list-style-type: none"> <li>- Strong adhesive</li> <li>- Not submersible, For dry and wet locations only</li> </ul>	<p><b>Q-ANGLE</b> (see Accessory cutsheet)</p> <ul style="list-style-type: none"> <li>- Adjustable mounting bracket</li> <li>- Indoor/Outdoor</li> </ul>	<p><b>PIVOT BRACKET</b> (see Accessory cutsheet)</p> <ul style="list-style-type: none"> <li>- Adjustable mounting bracket</li> <li>- Indoor</li> </ul>
--	---	---	---	--	--

### LENS

CL Clear

FR Frosted

PR Polar

DF Diffused



ENC/CL Encapsulated in Clear

ENC/TL Encapsulated in Translucent

### CUT OFF

17DEG



Optical 17°

# RESOURCE GUIDE

## EXTRUSIONS - SURFACE - LALO

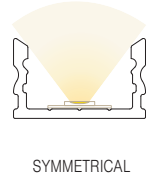
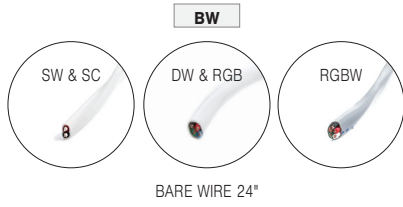
Model: iQA



### CONNECTORS/WIRE

STATIC WHITE AND STATIC COLOR ONLY

### LIGHT ORIENTATION



**TYPE** To order a bare extrusion without a strip installed in Q-Tran factory, choose **NI** (Not Installed) for your Type option

