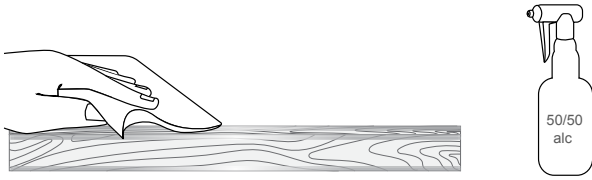


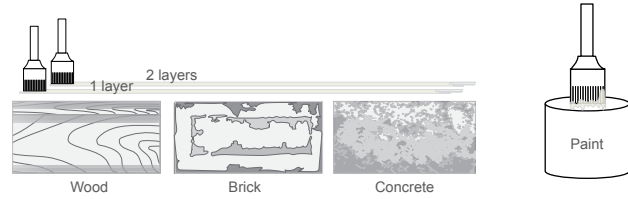
INSTALLATION STRIP



SURFACE PREPARATION



Thoroughly clean the area where the tape lights will be installed. Using a 50/50 alcohol mix, clean the area where LEDs will be applied and allow time for alcohol to dry, roughly 5 minutes.



For porous materials (wood, brick, concrete) apply two layers of paint or primer to the surface. This will help create a better bonding surface for these materials. This can be purchased from your local hardware store.

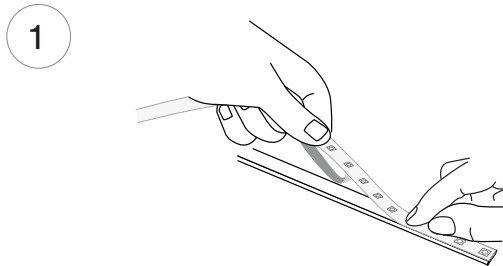


Apply 3M Primer 94 to surface where LED tape lights will be installed to increase bonding power. A second coat can be applied once first coat has dried. For best results with a porous material, apply the paint as described in step 3 and two layers of Primer 94.

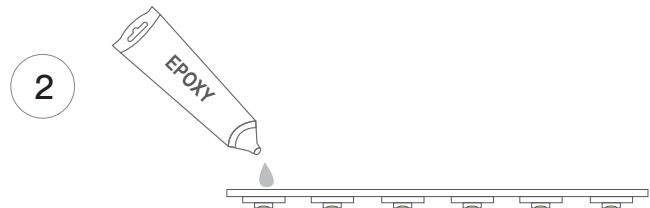
Temperature and Environmental concerns:

- Ideal application environment is 70-100° in 50% humidity
- Absolute minimum temperature: 50°F
- This temperature and humidity should be maintained for 72 hours after application for maximum holding force.

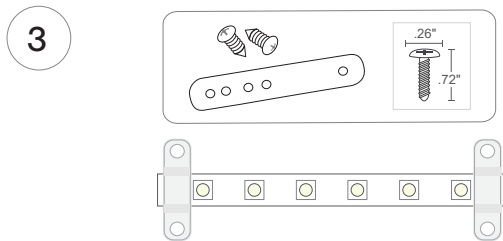
STRIP SURFACE INSTALLATION



Remove the backing from the adhesive and apply firm pressure to the bonding surface.

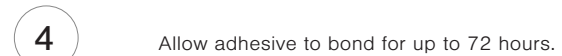


For Improved bonding performance, apply small amounts of epoxy at each end to increase holding force.



Install clips if they are being used. Install a strap every 12" to secure.

| Materials | Suggested Epoxies |
|---|---|
| Concrete, Stone, Cinderblock, Metal & Brick | Loctite Metal and Concrete Two-Part Epoxy |
| ABS, Fiberglass, Plastic, and PVC | Loctite Plastic Two-Part Epoxy |
| Tile, Wood, Ceramic, Glass, or Metal | Loctite Clear Two-Part Epoxy |
| All Purpose | Strong Stik |

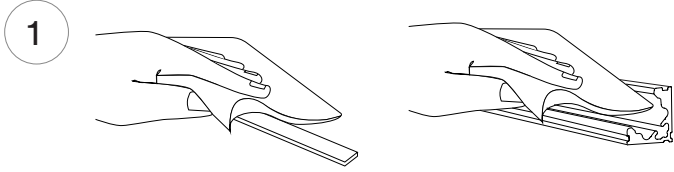


NOTES: • Field modifications must comply with Q-Tran's installation methods otherwise warranty is null and void

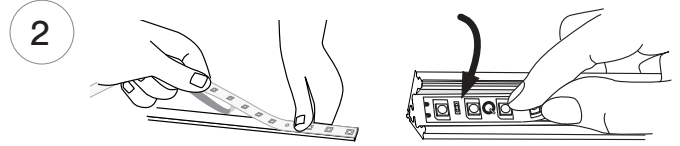
INSTALLATION STRIP



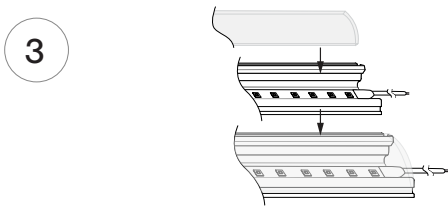
STRIP/EXTRUSION ASSEMBLY



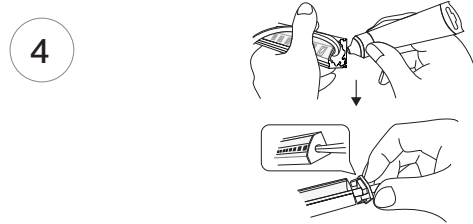
Using a 50/50 alcohol mix, thoroughly clean the surface of the extrusion and the multi-tray surface, allow time to dry (about 5 minutes).



Gently place LED in Extrusion/Tray. Apply firm pressure to the bonding surface. Do not remove more of the backing than is needed.

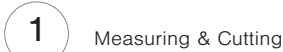


Start applying uniform pressure until the two panels (extrusion & lens) snap securely together.

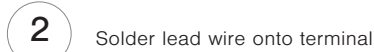
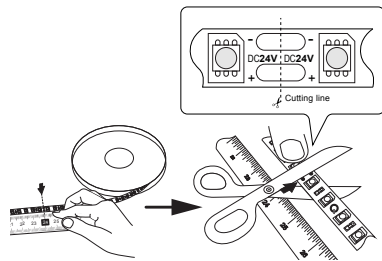


Add glue inside the cap and glue around to secure End Cap in place.

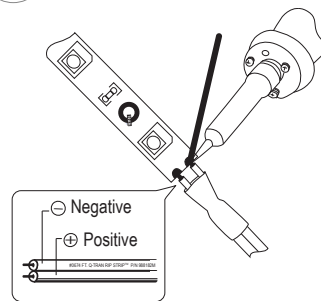
LEAD WIRE & JUMPER



Measuring & Cutting



Solder lead wire onto terminal

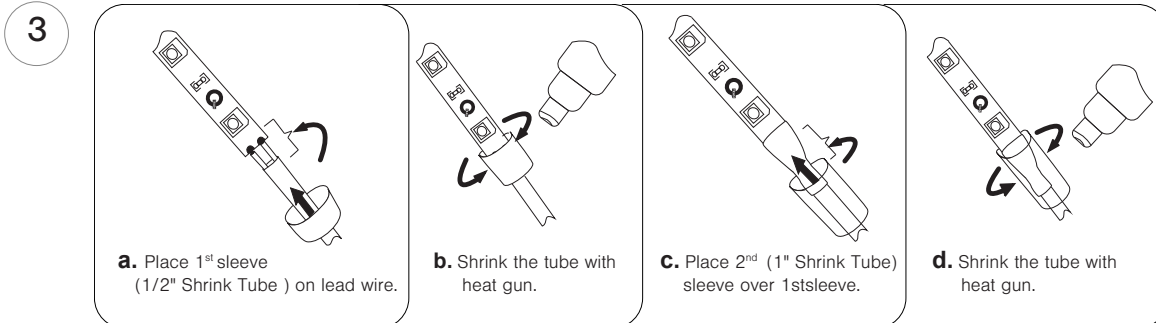


Materials - Lead Wire

- (1) 18" Lead Wire
- (1) 6" Solder
- (1) 1" Shrink Tube
- (1) 1/2" Shrink Tube

Materials - Jumper

- (1) 6" Lead Wire
- (1) 6" Solder
- (2) 1" Shrink Tube
- (2) 1/2" Shrink Tube



a. Place 1st sleeve (1/2" Shrink Tube) on lead wire.

b. Shrink the tube with heat gun.

c. Place 2nd (1" Shrink Tube) sleeve over 1stsleeve.

d. Shrink the tube with heat gun.

NOTES: • Field modifications must comply with Q-Tran's installation methods otherwise warranty is null and void

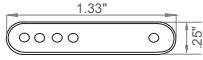
ACCESSORIES STRIP



MOUNTING

| | |
|--------------|-----|
| iQ-STRAP-10* | QTY |
|--------------|-----|

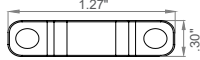
Sold: In packs of 10



Rubber Strap
Fits DRY, DMP, WET

| | |
|--------------|-----|
| iQ-CLIP-SS10 | QTY |
|--------------|-----|

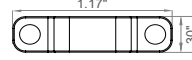
Sold: Individually



Metal Clip
Fits DMP, WET

| | |
|--------------|-----|
| iQ-CLIP-SS12 | QTY |
|--------------|-----|

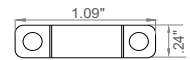
Sold: Individually



Metal Clip
Fits DMP

| | |
|------------|-----|
| iQ-CLIP-PL | QTY |
|------------|-----|

Sold: Individually

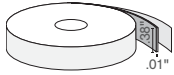


Rubber Clip
Fits DMP, WET

*1 strap included with every 1 ft. of bare LED

| | |
|------------|-----|
| iQ-VHB-STD | QTY |
|------------|-----|

Sold: In feet



Adhere LED to smooth surface
including extrusion

| | |
|------------|-----|
| iQ-VHB-CON | QTY |
|------------|-----|

Sold: In feet

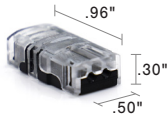


Adhere LED to concrete surface

CONNECTION

| | |
|-------------|-----|
| iQ-CLP-LEAD | QTY |
|-------------|-----|

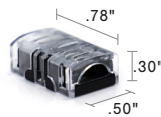
Sold: Individually



Joins lead wire to LED strip

| | |
|---------------|-----|
| iQ-CLP-INLINE | QTY |
|---------------|-----|

Sold: Individually



Joins two LED strips

| | |
|-------------|-----|
| iQ-SNP-LEAD | QTY |
|-------------|-----|

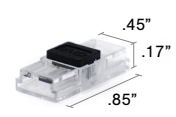
Sold: Individually



Joins lead wire to LED strip

| | |
|---------------|-----|
| iQ-SNP-INLINE | QTY |
|---------------|-----|

Sold: Individually



Joins two LED strips

NOTE: CLP connectors are SW24/6.0 and SC, DRY rated only, and do not fit in extrusions.

NOTE: SNP fits all extrusions except the SLIM. Works with all DRY rated LED strips. 6.0 W/FT or less.

| | |
|---------|-----|
| TWO-FER | QTY |
|---------|-----|

Sold: Individually



Two Females and one Male

| | |
|----------|-----|
| FOUR-FER | QTY |
|----------|-----|

Sold: Individually



Four Females and one Male

| | |
|-------------|-----|
| MALE BENDER | QTY |
|-------------|-----|

Sold: Individually



Connects a Male Barrel to a Male Barrel

| | |
|---------------|-----|
| FEMALE BENDER | QTY |
|---------------|-----|

Sold: Individually



Connects a Female Barrel to a Female Barrel

KITS & WIRE

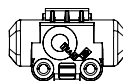
| | |
|-----------------------|---|
| iQ-LEAD-18-KIT | Includes (1) 18" Dry lead wire, (1) 1" heat shrink tubing, (1) ½" heat shrink tubing, (1) 6" solder |
| iQ-JUMP-6-KIT | Includes (1) 6" Dry lead wire, (2) 1" heat shrink tubing, (2) ½" heat shrink tubing, (1) 6" solder |
| iQ-WSW | Dry LED lead wire available in custom lengths, 1,000' reel |

| | | |
|----------------|-------------------|-----|
| iQ-LEAD-18-KIT | Sold individually | QTY |
| iQ-JUMP-6-KIT | Sold individually | QTY |
| iQ-WSW | Sold in inches | QTY |

JUNCTION BOX

Q-mini-J

Junction box that allows for splicing of LED lead wires
(Full ordering guide available for this product)



| | | |
|----------|-------------------|-----|
| Q-mini-J | Sold individually | QTY |
|----------|-------------------|-----|

| PROJECT NAME | DATE | COMPANY | TYPE | NOTE |
|--------------|------|---------|------|------|
| | | | | |