

VERS-OPTICS (05) FIXTURES - LINEAR



VERS Optics provides beam control for situations where precision linear lighting is required. The 50 degree extruded optic allows for LEDs up to 9.0 watts a foot to be used in dry locations where performance is needed. A proprietary diffusing agent ensures the VERS Optics fixture provides the cleanest light possible. The extruded aluminum housing combined with sleek metal endcaps and a flat lens with internal optics gives this fixture a sophisticated profile.

Static White



PRODUCT	W/FT	CCT	RATED	LENS	INPUT/ OUTPUT	CONNECTOR/ WIRE IN	CONNECTOR/ WIRE OUT	WIRE COLOR	WIRE TYPE	MOUNTING	FINISH	LENGTH* (IN)
VERS-05-SW			DRY	50D								
Voltage: 24VDC			DRY IP20	50D	Single (Closed exit)	1BW CON6 CON24	CLS	WH BK	CL2 CL2P	CC MG	ST BK BZ WH	
	1.5 3.0 4.0 5.0 6.0 7.5	20 22 24 27 30 35 40			Pass through	1BW CON6 CON24	1BW CON6 CON24	WH BK	CL2 CL2P			

*Available in 1" increments for 1.5W/ft - 5.0W/ft and 2" increments for 6.0W/ft - 7.5W/ft. Maximum length of 96", plus end caps. See fixture detail on page 3. Minimum fixture length 6".

High Efficacy



PRODUCT	W/FT	CCT	RATED	LENS	INPUT/ OUTPUT	CONNECTOR/ WIRE IN	CONNECTOR/ WIRE OUT	WIRE COLOR	WIRE TYPE	MOUNTING	FINISH	LENGTH* (IN)
VERS-05-SW			DRY	50D								
Voltage: 24VDC			DRY IP20	50D	Single (Closed exit)	1BW CON6 CON24	CLS	WH BK	CL2 CL2P	CC MG	ST BK BZ WH	
	1.5HE 3.0HE 6.0HE 9.0HE	20 22 24 27 30 35 40			Pass through	1BW CON6 CON24	1BW CON6 CON24	WH BK	CL2 CL2P			

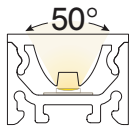
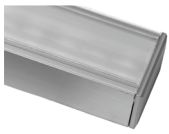
*Available in 2" increments to 96", plus end caps. See fixture detail on page 3. Minimum fixture length 6".

Dynamic White

PRODUCT	W/FT	CCT	RATED	LENS	INPUT/ OUTPUT	CONNECTOR/ WIRE IN	CONNECTOR/ WIRE OUT	WIRE COLOR	WIRE TYPE	MOUNTING	FINISH	LENGTH* (IN)
VERS-05-DW			DRY	50D								
Voltage: 24VDC			DRY IP20	50D	Single (Closed exit)	1BW CON6 CON24	CLS	WH BK	CL2 CL2P	CC MG	ST BK BZ WH	
	6.0	20/27 20/30			Pass through	1BW CON6 CON24	1BW CON6 CON24	WH BK	CL2 CL2P			

*Available in 2" increments to 96", plus end caps. See fixture detail on page 3. Minimum fixture length 6".

- NOTES:**
- Field modifications void warranty
 - Data subject to change, all data has +/- 5% tolerance
 - Contact Q-Tran for compatible power supplies
 - NRTL Listed for install in Storage Areas with Clothing, NEC Field 410.2 and 410.16 when assembled as a fixture, at Q-Tran facility (Not applicable for encapsulation)
 - 1**-BW comes in standard 36"- request custom length (Max 120") by writing it in inches next to "BW" in the order code box (ex. BW48)
 - Connector/Wire In or Out not needed to specify product. Standard configuration is Type S1, Connector/Wire In: BW & Connector/Wire Out: CLS
 - 2** Specify CL2P for plenum rated wire
 - 3** Based on 5W/ft



VERS-OPTICS (05) FIXTURES - LINEAR



VERS Optics provides beam control for situations where precision linear lighting is required. The 50 degree extruded optic allows for LEDs up to 9.0 watts a foot to be used in dry locations where performance is needed. A proprietary diffusing agent ensures the VERS Optics fixture provides the cleanest light possible. The extruded aluminum housing combined with sleek metal endcaps and a flat lens with internal optics gives this fixture a sophisticated profile.

Static Color

PRODUCT	W/FT	CCT	RATED	LENS	INPUT/ OUTPUT	CONNECTOR/ WIRE IN	CONNECTOR/ WIRE OUT	WIRE COLOR	WIRE TYPE	MOUNTING	FINISH	LENGTH* (IN)
VERS-05-SC Voltage: 24VDC	5.0		DRY	50D								
	5.0	GR BL RD AB	DRY IP20	50D	Single (Closed exit) S1 S2	¹ BW CON6 CON24	CLS	WH BK	CL2 ² CL2P	CC MG	ST BK BZ WH	
					Pass through P1 P2	¹ BW CON6 CON24	¹ BW CON6 CON24	WH BK	CL2 ² CL2P			

*Available in 2" increments to 96", plus end caps.
See fixture detail on page 3. Minimum fixture length 6".

RGB

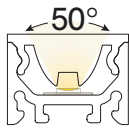
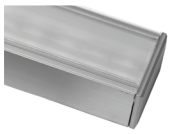
PRODUCT	W/FT	CCT	RATED	LENS	INPUT/ OUTPUT	CONNECTOR/ WIRE IN	CONNECTOR/ WIRE OUT	WIRE COLOR	WIRE TYPE	MOUNTING	FINISH	LENGTH* (IN)
VERS-05-RGB Voltage: 24VDC	6.0	RGB	DRY	50D								
	6.0	RGB	DRY IP20	50D	Single (Closed exit) S1 S2	¹ BW CON6 CON24	CLS	WH BK	CL2 ² CL2P	CC MG	ST BK BZ WH	
					Pass through P1 P2	¹ BW CON6 CON24	¹ BW CON6 CON24	WH BK	CL2 ² CL2P			

*Available in 2" increments to 96", plus end caps.
See fixture detail on page 3. Minimum fixture length 6".

NOTES:

- Field modifications void warranty
- Data subject to change, all data has +/- 5% tolerance
- Contact Q-Tran for compatible power supplies

- ¹BW comes in standard 36"- request custom length (Max 120") by writing it in inches next to "BW" in the order code box (ex. BW48)
- Connector/Wire In or Out not needed to specify product. Standard configuration is Type S1, Connector/Wire In: BW & Connector/Wire Out: CLS
- ² Specify CL2P for plenum rated wire



VERS-OPTICS (05) FIXTURES - LINEAR



TECHNICAL INFORMATION

STATIC WHITE [Calculated L70 (6k) = 70000 hrs]
Tested with VERS-05-SW-**-30-DRY-50D

50D	1.5W/FT		3.0W/FT		4.0W/FT		5.0W/FT		6.0W/FT		7.5W/FT	
	LM/FT	CRI	LM/FT	CRI	LM/FT	CRI	LM/FT	CRI	LM/FT	CRI	LM/FT	CRI
50D	162	98	283	98	358	98	430	98	526	98	568	98

STATIC COLOR [Calculated L70 (6k) = 30000 hrs]
Tested with VERS-05-SC-5.0-**-DRY-50D

50D	Red		Green		Blue		Amber	
	LM/FT	Wavelength	LM/FT	Wavelength	LM/FT	Wavelength	LM/FT	Wavelength
50D	122	634	584	519	132	467	92	595

DYNAMIC WHITE
[Calculated L70 (6k) = 70000 hrs]
Tested with VERS-05-DW-6.0-**-DRY-50D

50D	2000K		2700K		3000K	
	LM/FT	CRI	LM/FT	CRI	LM/FT	CRI
50D	224	93	244	97	258	98

HIGH EFFICACY [Calculated L70 (6k) = 70000 hrs]
Tested with VERS-05-SW-**-30-DRY-50D

50D	1.5HE W/FT		3.0HE W/FT		6.0HE W/FT		9.0HE W/FT	
	LM/FT	CRI	LM/FT	CRI	LM/FT	CRI	LM/FT	CRI
50D	207	98	392	97	708	98	1045	98

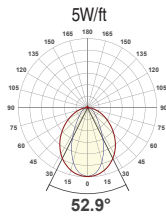
RGB [Calculated L70 (6k) = 55000 hrs]
Tested with VERS-05-RGB-6.0-RGB-DRY-50D

50D	Red		Green		Blue	
	LM/FT	Wavelength	LM/FT	Wavelength	LM/FT	Wavelength
50D	93	632	182	523	49	470

LENS with LED visibility

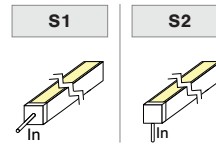


BEAM ANGLES

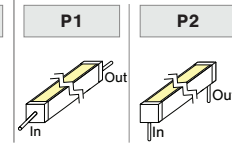


INPUT/OUTPUT

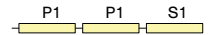
SINGLE (Input only)



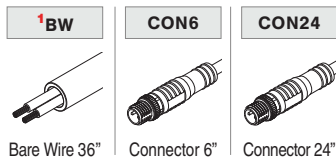
PASS THROUGH (Input/Output)



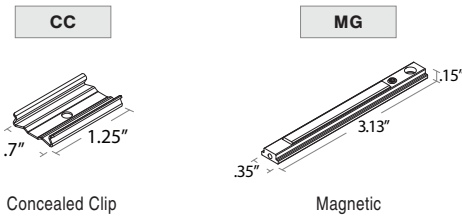
ORDER EXAMPLE



CONNECTOR/WIRE IN/WIRE OUT



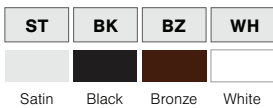
MOUNTING



2 pieces of hardware provided for 4' or less;
4 pieces of hardware provided for greater than 4'

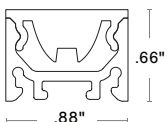
One MG clip provided per foot

FINISH

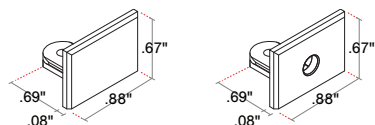


FIXTURE DIMENSION DETAILS

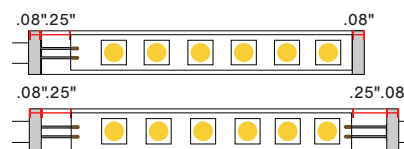
DIMENSIONS



END CAPS



LED LENGTH (IN) : Add to nominal LED length for fixture length



$$\begin{aligned} &\text{Endcap\#1} \\ &\text{Endcap\#2} \\ &\text{Space to solder wire} \\ \text{S1 } &.08" + .08" + .25" = .41" \\ \text{P1 } &.08" + .08" + 2(.25") = .66" \end{aligned}$$