

Photometric Details



RBG24-6.0-DRY-RGB-ALL

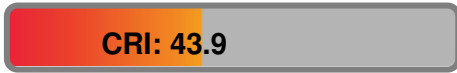
Product name:	RBG24-6.0-DRY-RGB-ALL
Date:	3/18/2020
Powering product:	IQ-PH-80-120/24
<hr/>	
Output:	334 lm/ft
Peak:	87.1 cd
Power:	6.0 W/ft
PF:	1.0



Light efficiency:



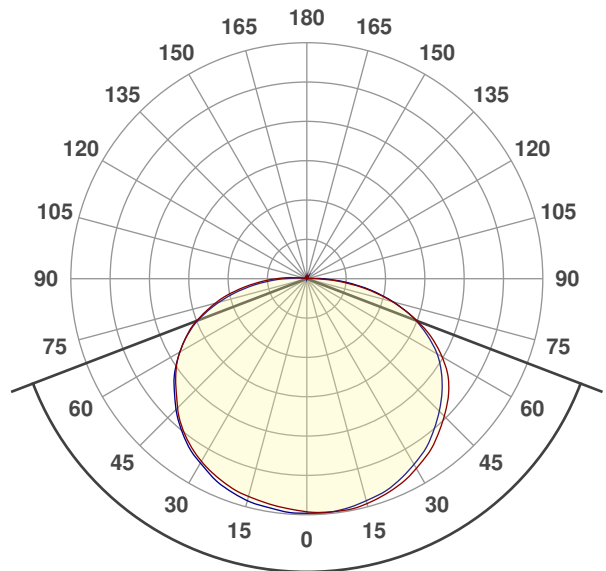
Light quality:



Color temperature:



Beam Angle

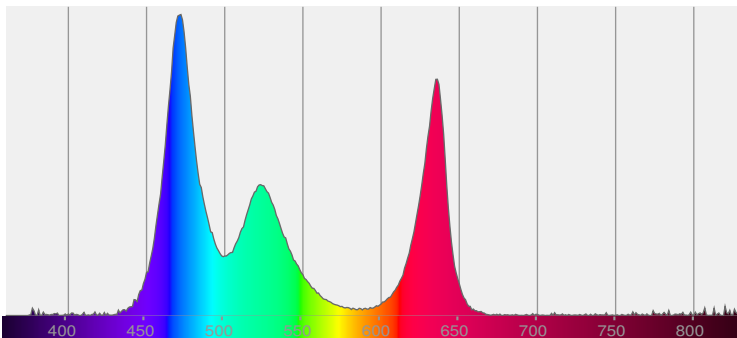


138.1°

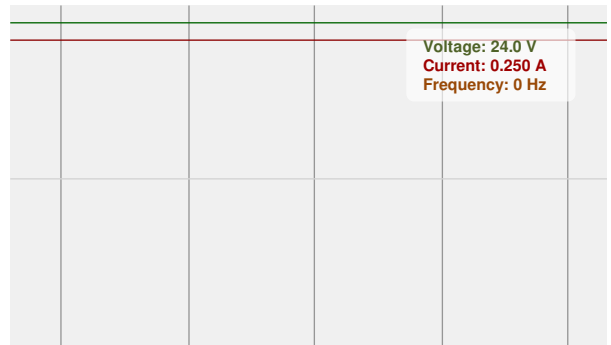
CIE 1931
x: 0.261
y: 0.291



Spectra



Power

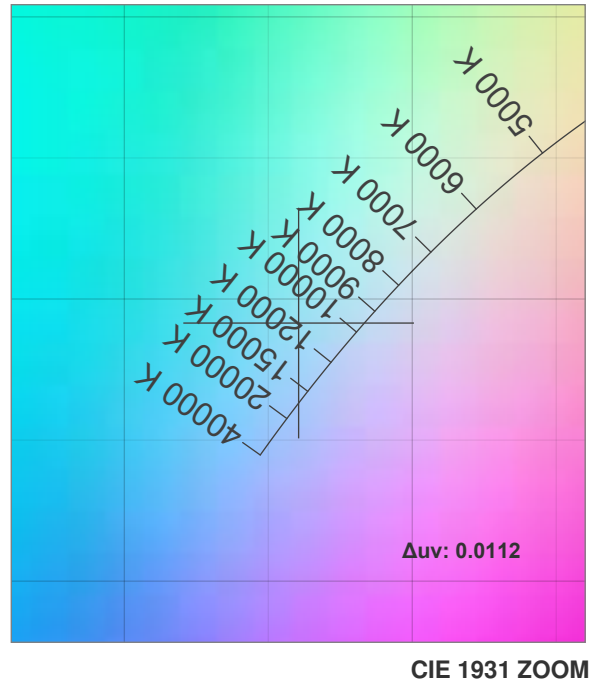
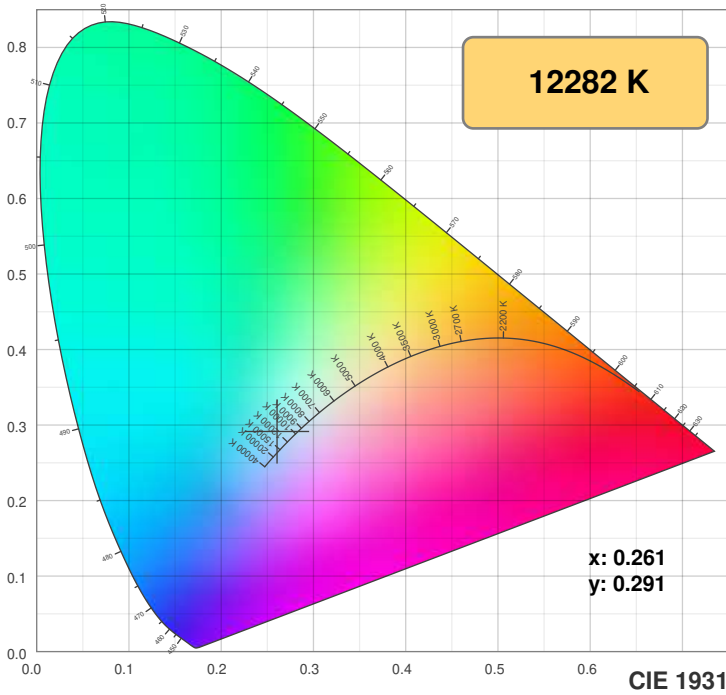


Voltage: 24.0 V
Current: 0.250 A
Frequency: 0 Hz

Color Details

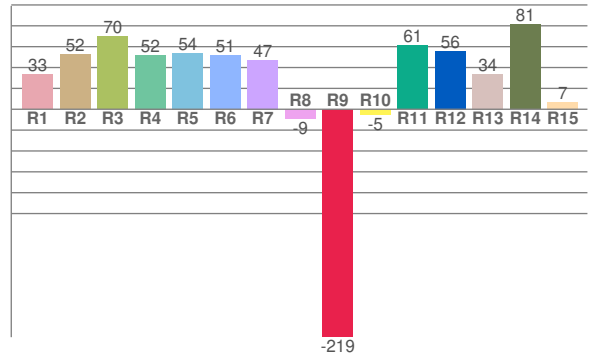
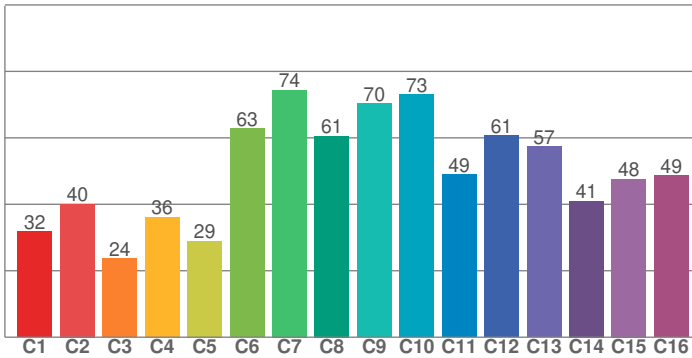


RBG24-6.0-DRY-RGB-ALL



TM30: 49.3

CRI: 43.9 (R1-R8)



CRI R values, only R1-R8 are used to calculate final CRI value

R1	R2	R3	R4	R5	R6	R7	R8	R9	R10	R11	R12	R13	R14	R15
33.2	52.5	69.8	52.1	53.8	51.3	47.3	-9.1	-218.5	-5.1	61.1	55.9	33.7	81.1	6.7

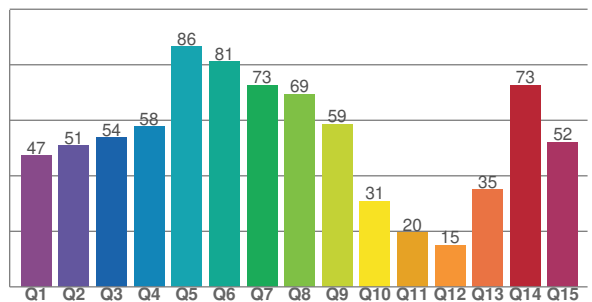
TM30 C values, 16 binned values out of total of 99 C values

C1	C2	C3	C4	C5	C6	C7	C8	C9	C10	C11	C12	C13	C14	C15	C16
31.9	40.1	23.7	36.1	28.9	62.8	74.4	60.5	70.4	73.0	49.0	60.7	57.4	41.0	47.6	48.7

CQS Q values

Q1	Q2	Q3	Q4	Q5	Q6	Q7	Q8	Q9	Q10	Q11	Q12	Q13	Q14	Q15
47.3	50.8	53.8	57.7	86.5	81.1	72.7	69.4	58.6	30.8	19.5	15.1	35.0	72.6	52.1

CQS: 48.7



Color parameters

Color temperature	Color rendering index	Red component	Color fidelity	Color gamut	Color quality scale	Color coordinate cie 1931	Color coordinate cie 1931	Color coordinate	Color coordinate	Color deviation from black body
CCT	CRI	CRI R9	TM30 Rf	TM30 Rg	CQS	x	y	u	v	Δuv
12282 K	43.9	-218.5	49.3	90.8	48.7	0.261	0.291	0.174	0.293	0.0112

TM30 Details

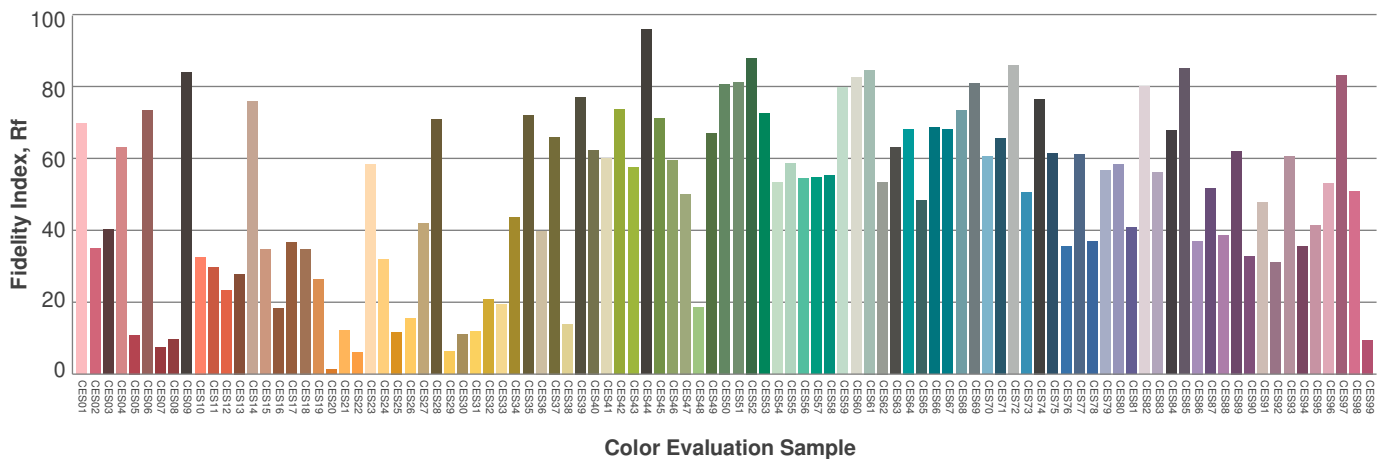
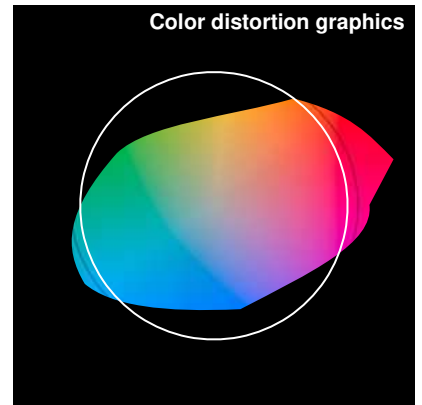
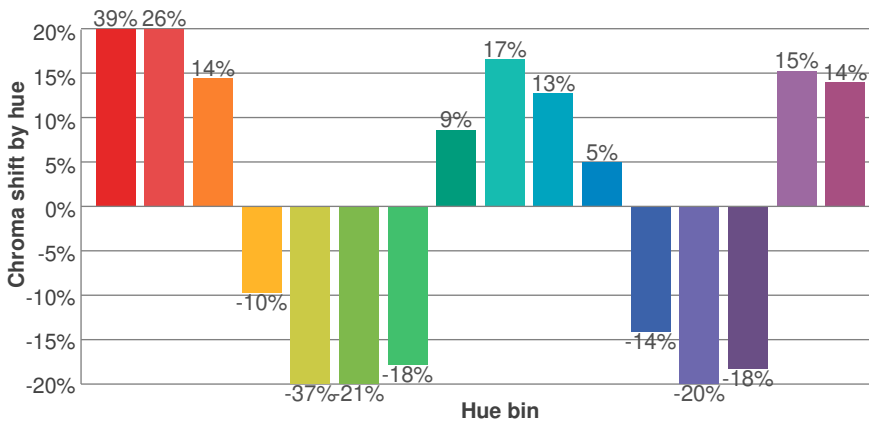
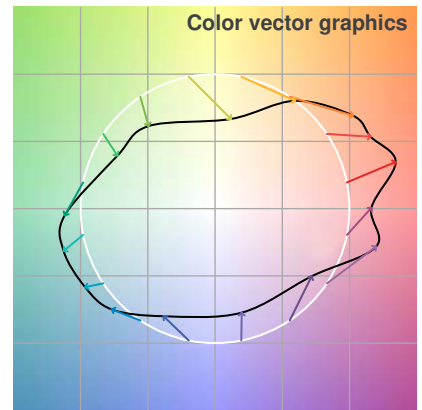
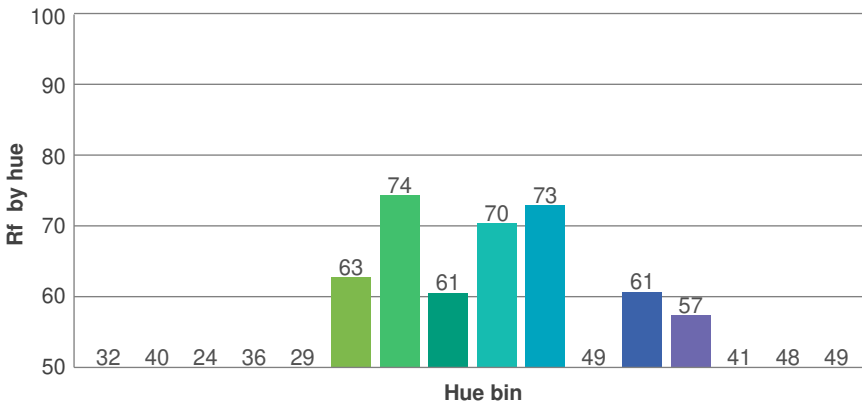
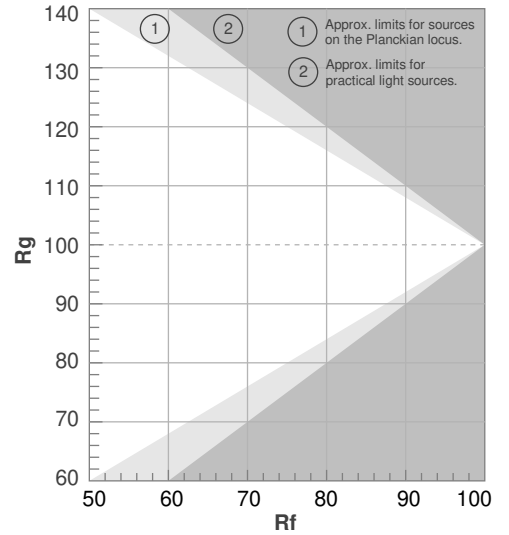


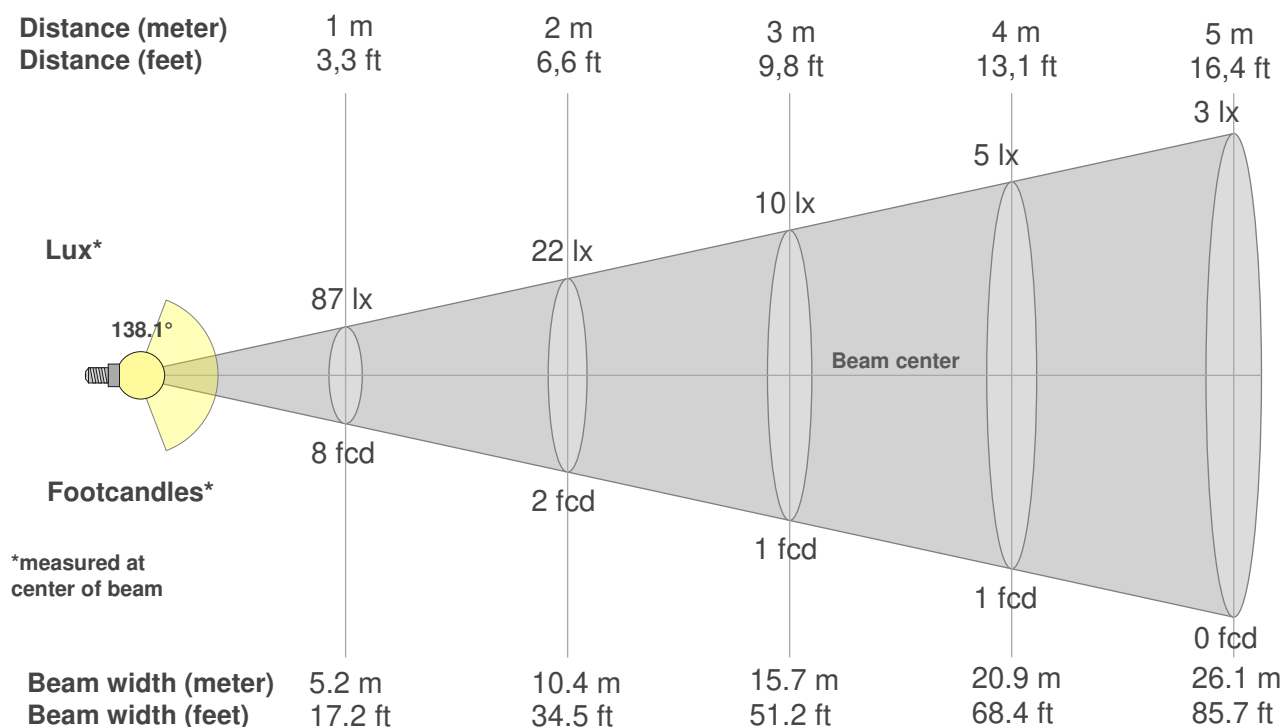
RBG24-6.0-DRY-RGB-ALL

Rf 49.3
Fidelity index Rf

Rg 90.8
Gammut index Rg

Hue Bin	R _f	Graphic shifts (%)	
		Chroma	Hue
1	32	39%	8%
2	40	26%	-20%
3	24	14%	-47%
4	36	-10%	-43%
5	29	-37%	-25%
6	63	-21%	7%
7	74	-18%	8%
8	61	9%	27%
9	70	17%	9%
10	73	13%	-5%
11	49	5%	-22%
12	61	-14%	-22%
13	57	-20%	4%
14	41	-18%	32%
15	48	15%	43%
16	49	14%	23%





Beam intensities from 1-20m

1m	2m	3m	4m	5m	6m	7m	8m	9m	10m	11m	12m	13m	14m	15m	16m	17m	18m	19m	20m
3.3ft	6.6ft	9.8ft	13.1ft	16.4ft	19.7ft	23ft	26.2ft	29.5ft	32.8ft	36.1ft	39.4ft	42.7ft	45.9ft	49.2ft	52.5ft	55.8ft	59.1ft	62.3ft	65.6ft
87lx	22lx	10lx	5lx	3lx	2lx	2lx	1lx	1lx	1lx	1lx	1lx	1lx	0lx	0lx	0lx	0lx	0lx	0lx	0lx
8.1fcd	2fcd	0.9fcd	0.5fcd	0.3fcd	0.2fcd	0.2fcd	0.1fcd	0.1fcd	0.1fcd	0.1fcd	0.1fcd	0fcd	0fcd	0fcd	0fcd	0fcd	0fcd	0fcd	0fcd

Intensities in 0° c-plane

0°	5°	10°	15°	20°	25°	30°	35°	40°	45°	50°	55°	60°	65°	70°	75°	80°	85°	90°	95°
86.8	87.0	87.1	86.4	85.2	83.6	81.3	78.9	75.7	72.2	68.5	64.0	57.9	50.8	42.2	32.8	22.9	12.7	4.2	0.6
100%	100%	100%	100%	98%	96%	94%	91%	87%	83%	79%	74%	67%	58%	49%	38%	26%	15%	5%	1%

Intensities in 90° c-plane

0°	5°	10°	15°	20°	25°	30°	35°	40°	45°	50°	55°	60°	65°	70°	75°	80°	85°	90°	95°
86.8	87.1	86.5	85.3	84.2	82.1	79.6	77.0	73.4	69.6	65.5	61.0	55.9	49.2	41.9	33.2	23.9	14.4	6.0	1.1
100%	100%	100%	98%	97%	95%	92%	89%	85%	80%	75%	70%	64%	57%	48%	38%	28%	17%	7%	1%

Intensities in 180° c-plane

0°	5°	10°	15°	20°	25°	30°	35°	40°	45°	50°	55°	60°	65°	70°	75°	80°	85°	90°	95°
86.8	85.6	84.7	83.7	82.4	80.5	78.2	75.4	72.0	67.9	63.4	59.2	54.4	48.8	42.4	35.2	27.4	19.2	11.6	5.1
100%	99%	98%	96%	95%	93%	90%	87%	83%	78%	73%	68%	63%	56%	49%	41%	32%	22%	13%	6%

Intensities in 270° c-plane

0°	5°	10°	15°	20°	25°	30°	35°	40°	45°	50°	55°	60°	65°	70°	75°	80°	85°	90°	95°
86.8	86.9	86.1	85.3	83.8	81.8	79.0	76.3	72.7	68.7	64.2	59.7	54.4	48.6	41.8	33.7	25.2	16.6	8.7	2.9
100%	100%	99%	98%	97%	94%	91%	88%	84%	79%	74%	69%	63%	56%	48%	39%	29%	19%	10%	3%

Beam angle 50%	Field angle 10%	Cutoff angle 2,5%	Intensity ratio in 120° cone	Intensity ratio in 90° cone
138.1°	178.8°	190°	67.9%	43.4%

Photometric Details



RBG24-6.0-DRY-RGB-RD

Product name:
RBG24-6.0-DRY-RGB-RD

Date:
3/17/2020

Powering product:
IQ-PH-80-120/24

Output: 99.3 lm/ft
Peak: 26.9 cd
Power: 2.4 W/ft
PF: 1.0



Light efficiency:



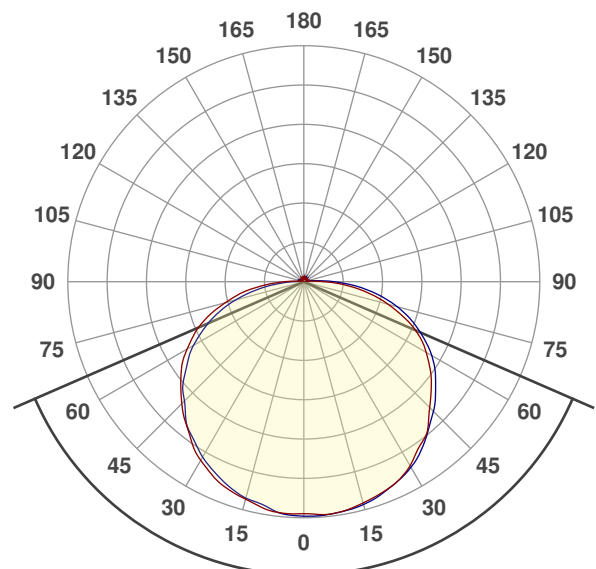
Light quality:



Color temperature:



Beam Angle

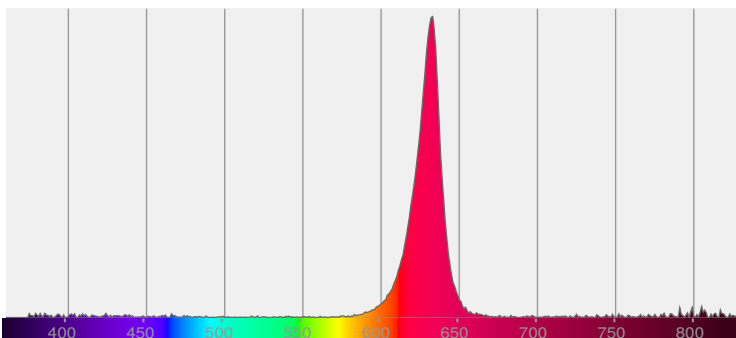


133°

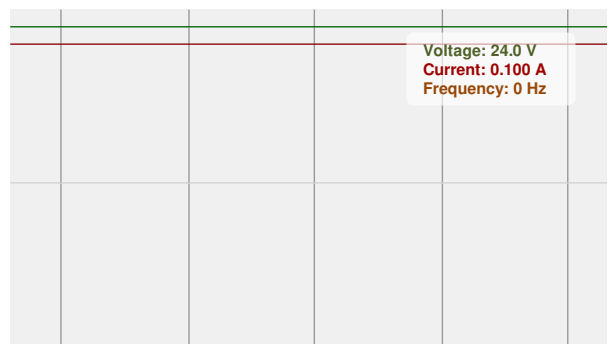
CIE 1931
x: 0.679
y: 0.301



Spectra



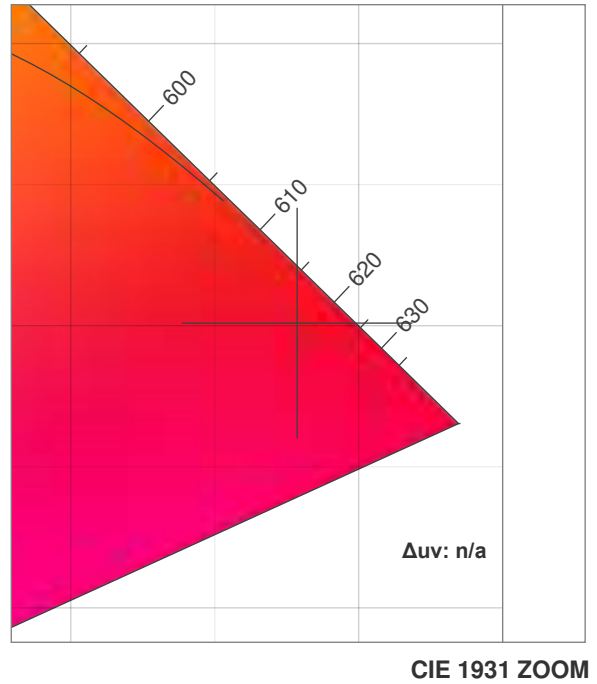
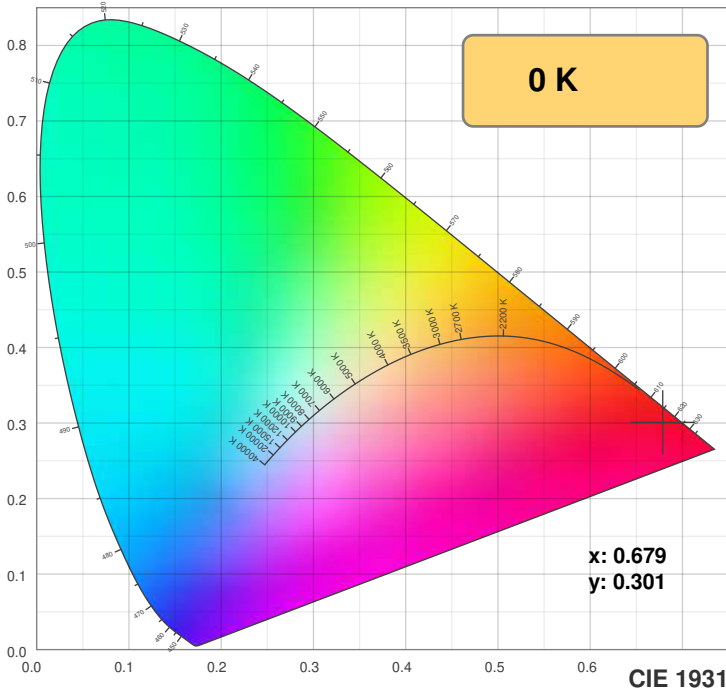
Power



Color Details

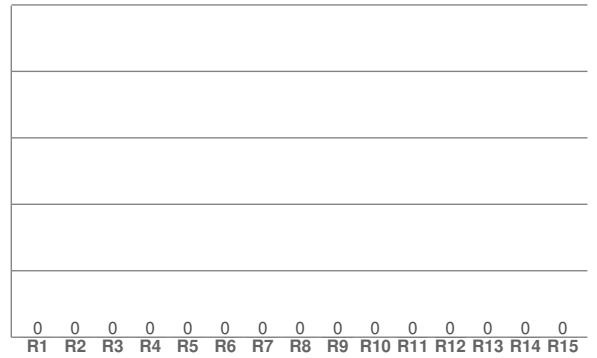
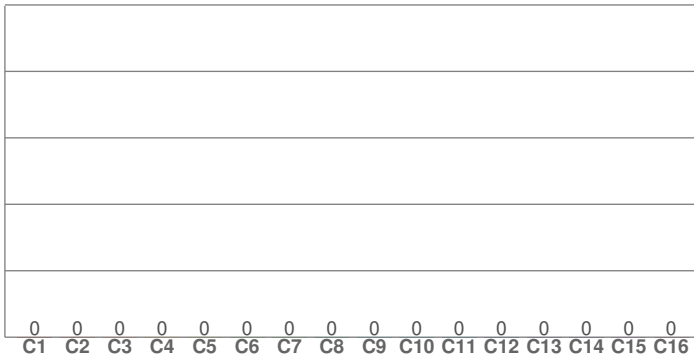


RBG24-6.0-DRY-RGB-RD



TM30: 0.0

CRI: 0.0 (R1-R8)



CRI R values, only R1-R8 are used to calculate final CRI value

R1	R2	R3	R4	R5	R6	R7	R8	R9	R10	R11	R12	R13	R14	R15
0.0	0.0	0.0	0.0	0.0	0.0	0.0	0.0	0.0	0.0	0.0	0.0	0.0	0.0	0.0

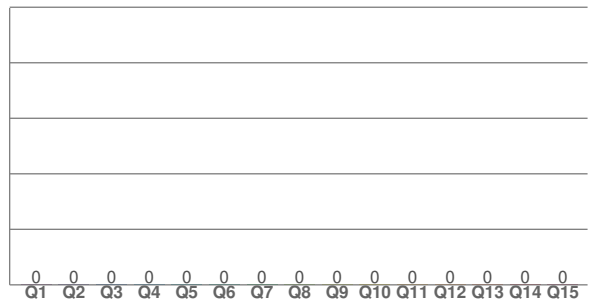
TM30 C values, 16 binned values out of total of 99 C values

C1	C2	C3	C4	C5	C6	C7	C8	C9	C10	C11	C12	C13	C14	C15	C16
0.0	0.0	0.0	0.0	0.0	0.0	0.0	0.0	0.0	0.0	0.0	0.0	0.0	0.0	0.0	0.0

CQS Q values

Q1	Q2	Q3	Q4	Q5	Q6	Q7	Q8	Q9	Q10	Q11	Q12	Q13	Q14	Q15
0.0	0.0	0.0	0.0	0.0	0.0	0.0	0.0	0.0	0.0	0.0	0.0	0.0	0.0	0.0

CQS: 0.0



Color parameters

Color temperature	Color rendering index	Red component	Color fidelity	Color gamut	Color quality scale	Color coordinate cie 1931	Color coordinate cie 1931	Color coordinate	Color coordinate	Color deviation from black body
CCT	CRI	CRI R9	TM30 Rf	TM30 Rg	CQS	x	y	u	v	Δuv
0 K	0.0	0.0	0.0	0.0	0.0	0.679	0.301	0.517	0.344	n/a

TM30 Details

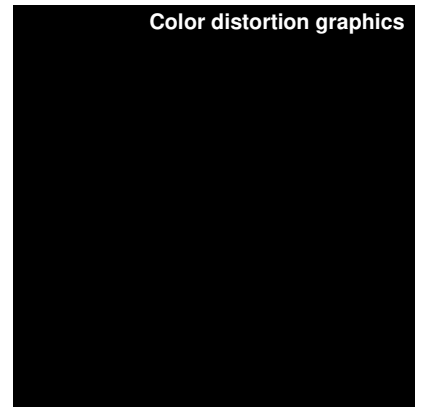
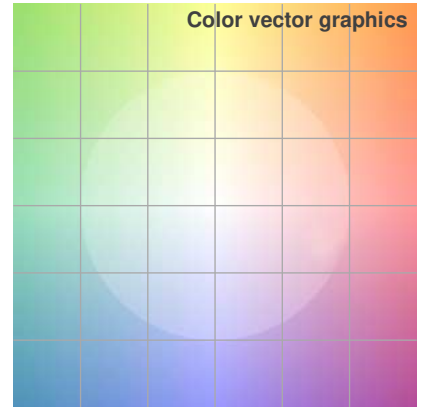
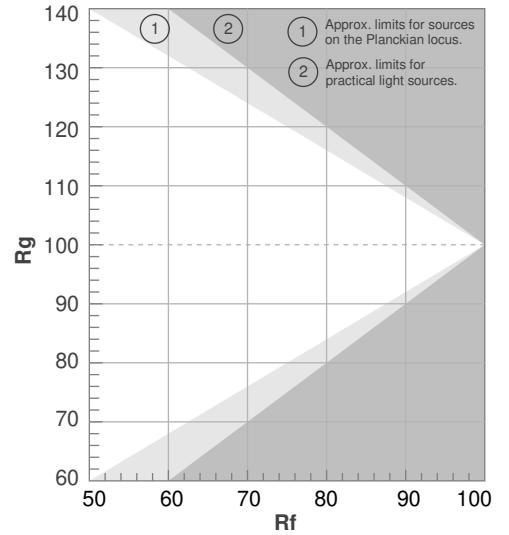


RBG24-6.0-DRY-RGB-RD

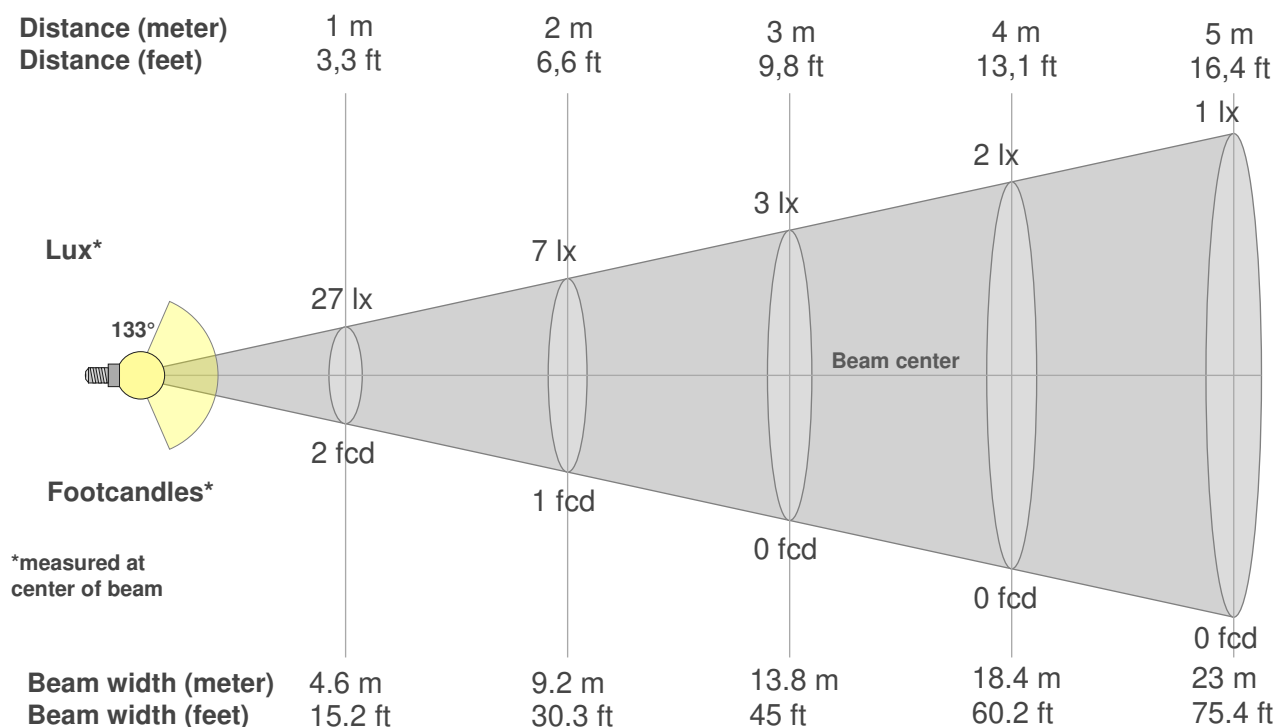
Rf 0.0
Fidelity index Rf

Rg 0.0
Gammut index Rg

Hue Bin	R _f	Graphic shifts (%)	
		Chroma	Hue
1	0	0%	0%
2	0	0%	0%
3	0	0%	0%
4	0	0%	0%
5	0	0%	0%
6	0	0%	0%
7	0	0%	0%
8	0	0%	0%
9	0	0%	0%
10	0	0%	0%
11	0	0%	0%
12	0	0%	0%
13	0	0%	0%
14	0	0%	0%
15	0	0%	0%
16	0	0%	0%



Color Evaluation Sample



Beam intensities from 1-20m

1m	2m	3m	4m	5m	6m	7m	8m	9m	10m	11m	12m	13m	14m	15m	16m	17m	18m	19m	20m
3.3ft	6.6ft	9.8ft	13.1ft	16.4ft	19.7ft	23ft	26.2ft	29.5ft	32.8ft	36.1ft	39.4ft	42.7ft	45.9ft	49.2ft	52.5ft	55.8ft	59.1ft	62.3ft	65.6ft
27lx	7lx	3lx	2lx	1lx	1lx	1lx	0lx	0lx	0lx	0lx	0lx	0lx	0lx	0lx	0lx	0lx	0lx	0lx	0lx
2.5fcd	0.6fcd	0.3fcd	0.2fcd	0.1fcd	0.1fcd	0.1fcd	0fcd	0fcd	0fcd	0fcd	0fcd	0fcd	0fcd	0fcd	0fcd	0fcd	0fcd	0fcd	0fcd

Intensities in 0° c-plane

0°	5°	10°	15°	20°	25°	30°	35°	40°	45°	50°	55°	60°	65°	70°	75°	80°	85°	90°	95°
26.7	26.8	26.6	26.2	25.8	25.3	24.3	23.1	22.0	20.4	19.1	17.7	16.2	14.5	12.4	10.0	7.6	5.0	2.5	0.8
100%	100%	100%	98%	97%	95%	91%	86%	83%	76%	71%	66%	61%	54%	46%	37%	28%	19%	10%	3%

Intensities in 90° c-plane

0°	5°	10°	15°	20°	25°	30°	35°	40°	45°	50°	55°	60°	65°	70°	75°	80°	85°	90°	95°
26.7	26.8	26.7	26.4	25.9	25.3	24.5	23.5	22.2	21.0	19.7	18.4	16.9	15.1	13.2	11.1	8.7	6.1	3.5	1.4
100%	100%	100%	99%	97%	95%	92%	88%	83%	79%	74%	69%	63%	57%	49%	41%	33%	23%	13%	5%

Intensities in 180° c-plane

0°	5°	10°	15°	20°	25°	30°	35°	40°	45°	50°	55°	60°	65°	70°	75°	80°	85°	90°	95°
26.7	26.6	26.4	25.8	25.3	24.6	23.6	22.4	21.1	19.8	18.4	17.1	15.4	13.7	11.7	9.3	7.1	4.6	2.3	0.7
100%	100%	99%	97%	95%	92%	88%	84%	79%	74%	69%	64%	58%	51%	44%	35%	27%	17%	8%	3%

Intensities in 270° c-plane

0°	5°	10°	15°	20°	25°	30°	35°	40°	45°	50°	55°	60°	65°	70°	75°	80°	85°	90°	95°
26.7	26.7	26.0	25.7	25.0	24.1	23.2	22.0	20.9	19.4	18.0	16.3	14.6	12.5	10.4	8.1	5.6	3.3	1.4	0.6
100%	100%	97%	96%	94%	90%	87%	82%	78%	72%	67%	61%	55%	47%	39%	30%	21%	12%	5%	2%

Beam angle 50%	Field angle 10%	Cutoff angle 2,5%	Intensity ratio in 120° cone	Intensity ratio in 90° cone
133°	178.5°	192.1°	67.2%	43.6%

Photometric Details



RBG24-6.0-DRY-RGB-GR

Product name: RBG24-6.0-DRY-RGB-GR	
Date: 3/17/2020	
Powering product: IQ-PH-80-120/24	
<hr/>	
Output:	208 lm/ft
Peak:	54.9 cd
Power:	1.9 W/ft
PF:	1.0



Light efficiency:



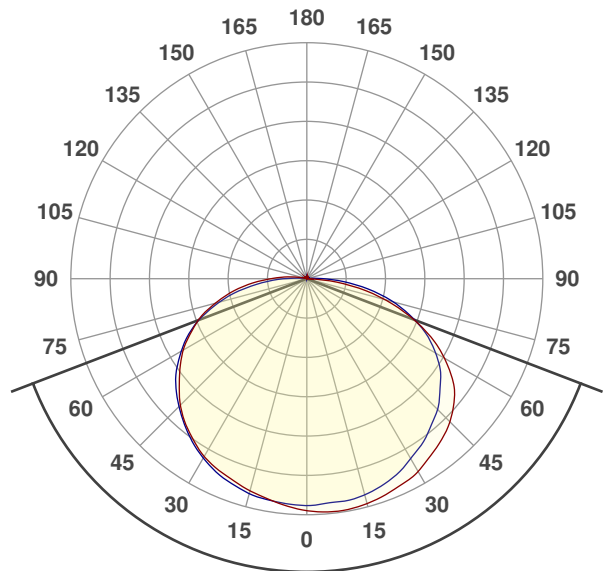
Light quality:



Color temperature:



Beam Angle

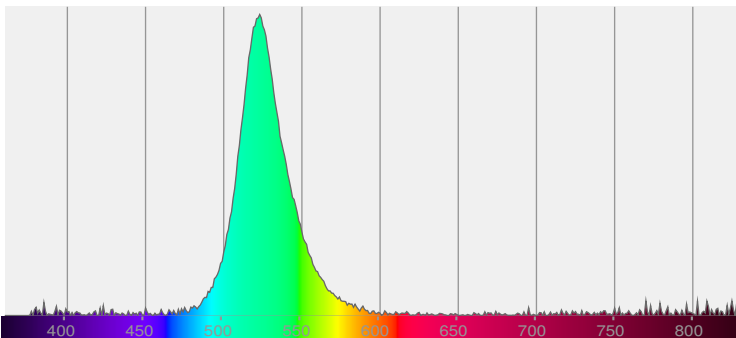


138.1°

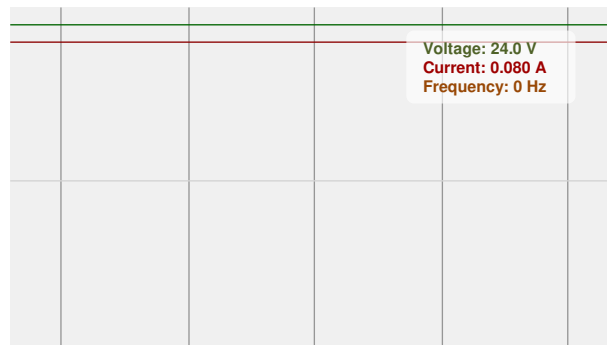
CIE 1931
x: 0.181
y: 0.718



Spectra



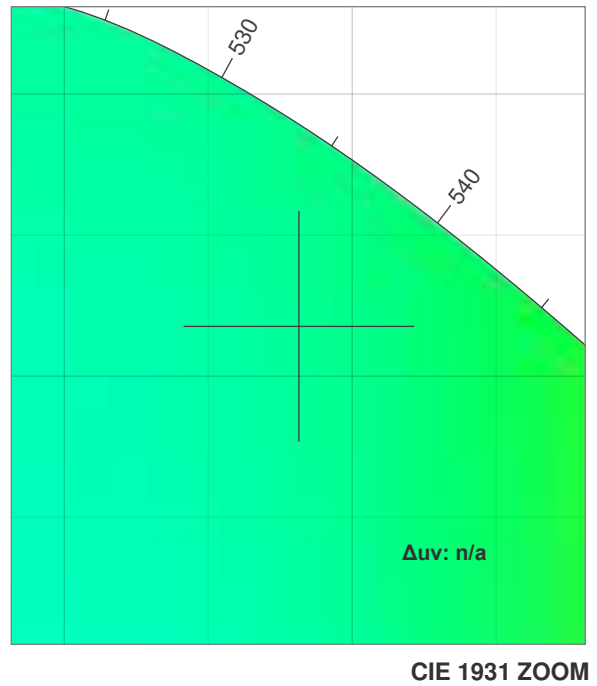
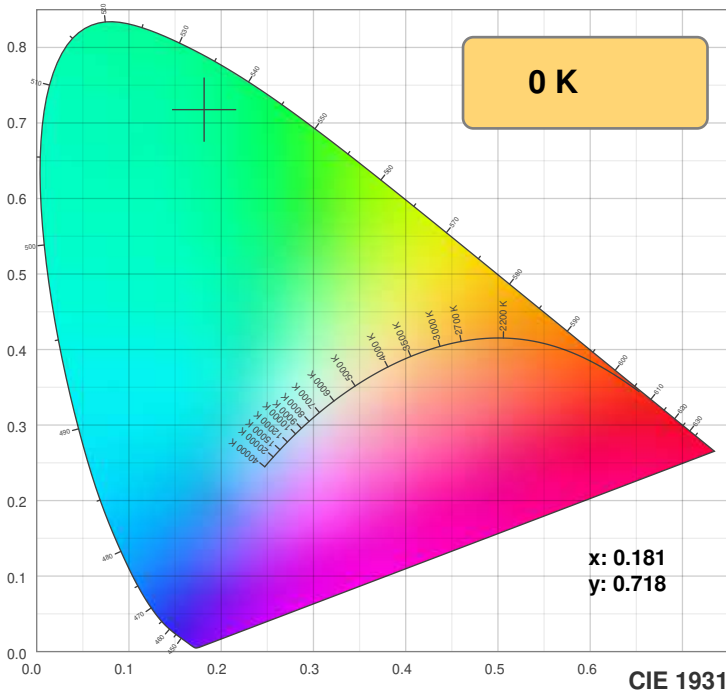
Power



Color Details

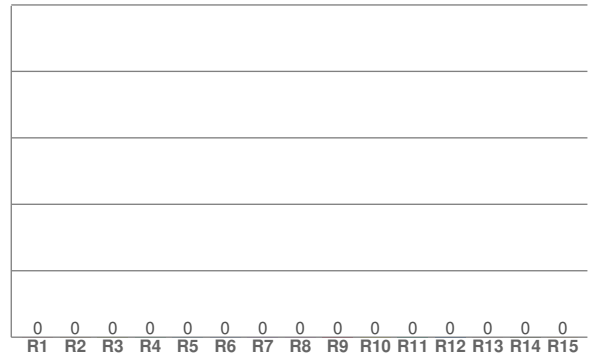
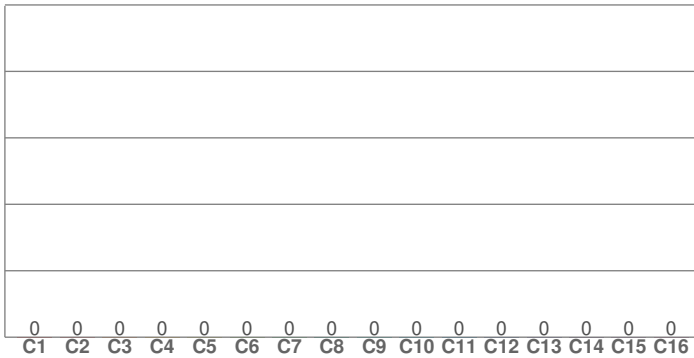


RBG24-6.0-DRY-RGB-GR



TM30: 0.0

CRI: 0.0 (R1-R8)



CRI R values, only R1-R8 are used to calculate final CRI value

R1	R2	R3	R4	R5	R6	R7	R8	R9	R10	R11	R12	R13	R14	R15
0.0	0.0	0.0	0.0	0.0	0.0	0.0	0.0	0.0	0.0	0.0	0.0	0.0	0.0	0.0

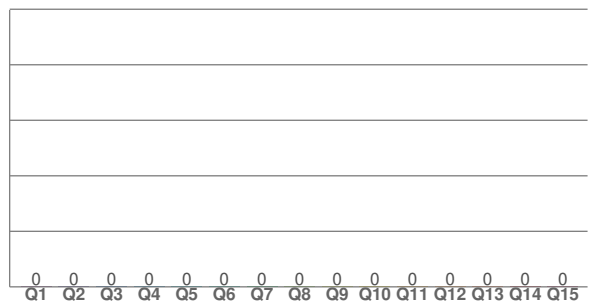
TM30 C values, 16 binned values out of total of 99 C values

C1	C2	C3	C4	C5	C6	C7	C8	C9	C10	C11	C12	C13	C14	C15	C16
0.0	0.0	0.0	0.0	0.0	0.0	0.0	0.0	0.0	0.0	0.0	0.0	0.0	0.0	0.0	0.0

CQS Q values

Q1	Q2	Q3	Q4	Q5	Q6	Q7	Q8	Q9	Q10	Q11	Q12	Q13	Q14	Q15
0.0	0.0	0.0	0.0	0.0	0.0	0.0	0.0	0.0	0.0	0.0	0.0	0.0	0.0	0.0

CQS: 0.0



Color parameters

Color temperature	Color rendering index	Red component	Color fidelity	Color gamut	Color quality scale	Color coordinate cie 1931	Color coordinate cie 1931	Color coordinate	Color coordinate	Color deviation from black body
CCT	CRI	CRI R9	TM30 Rf	TM30 Rg	CQS	x	y	u	v	Δuv
0 K	0.0	0.0	0.0	0.0	0.0	0.181	0.718	0.065	0.383	n/a

TM30 Details

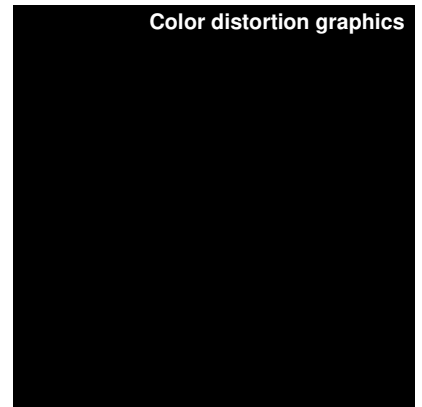
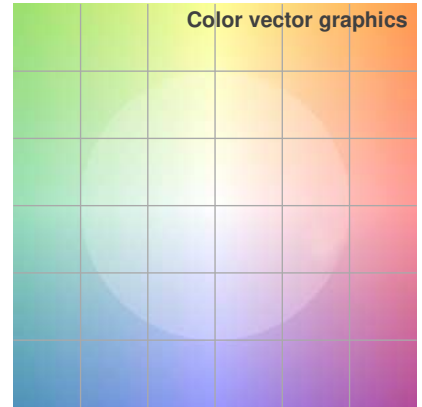
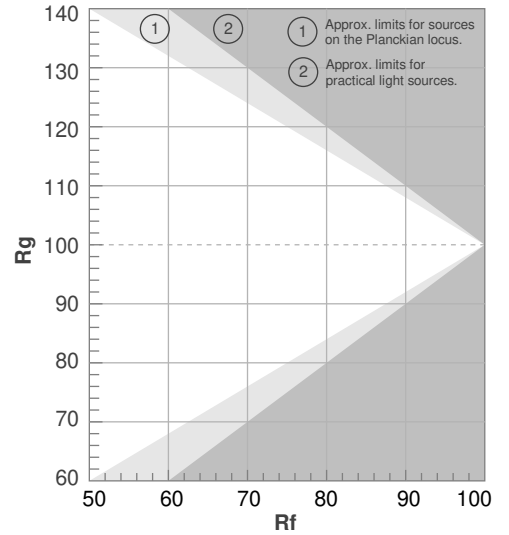


RBG24-6.0-DRY-RGB-GR

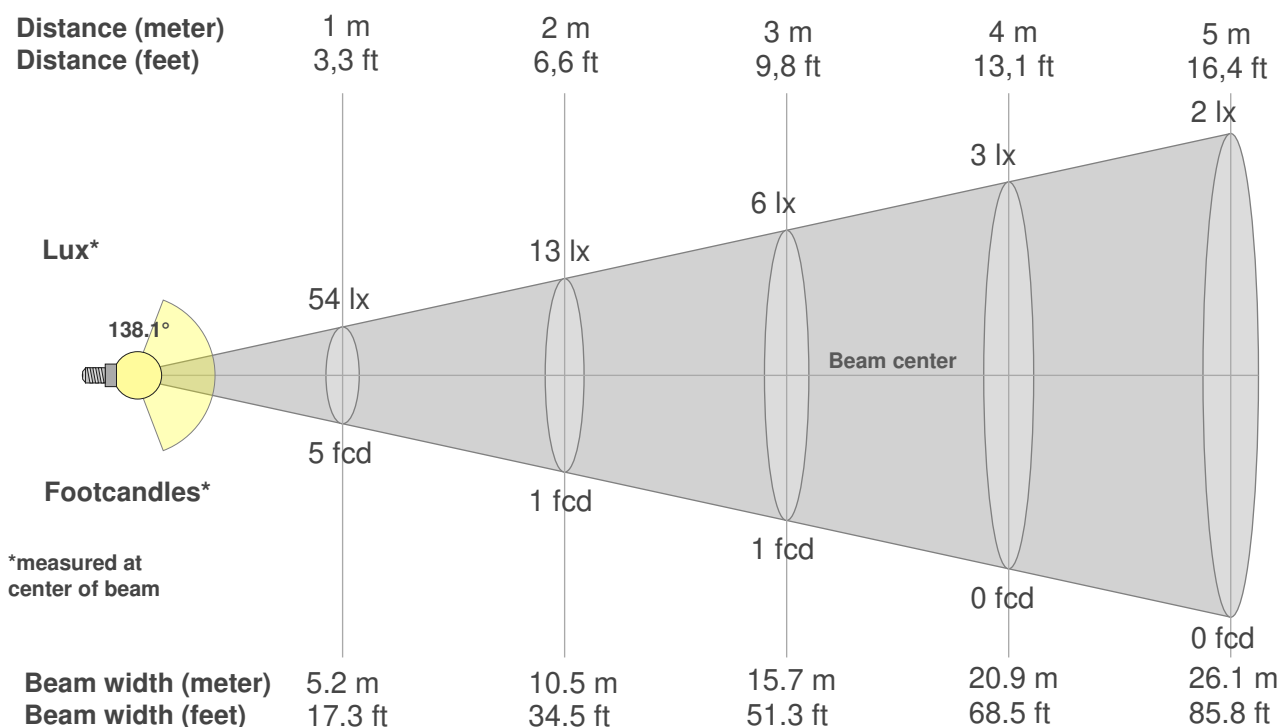
Rf 0.0
Fidelity index Rf

Rg 0.0
Gammut index Rg

Hue Bin	R _f	Graphic shifts (%)	
		Chroma	Hue
1	0	0%	0%
2	0	0%	0%
3	0	0%	0%
4	0	0%	0%
5	0	0%	0%
6	0	0%	0%
7	0	0%	0%
8	0	0%	0%
9	0	0%	0%
10	0	0%	0%
11	0	0%	0%
12	0	0%	0%
13	0	0%	0%
14	0	0%	0%
15	0	0%	0%
16	0	0%	0%



Color Evaluation Sample



Beam intensities from 1-20m

1m	2m	3m	4m	5m	6m	7m	8m	9m	10m	11m	12m	13m	14m	15m	16m	17m	18m	19m	20m
3.3ft	6.6ft	9.8ft	13.1ft	16.4ft	19.7ft	23ft	26.2ft	29.5ft	32.8ft	36.1ft	39.4ft	42.7ft	45.9ft	49.2ft	52.5ft	55.8ft	59.1ft	62.3ft	65.6ft
54lx	13lx	6lx	3lx	2lx	1lx	1lx	1lx	1lx	1lx	0lx	0lx	0lx	0lx	0lx	0lx	0lx	0lx	0lx	0lx
5fcd	1.2fcd	0.6fcd	0.3fcd	0.2fcd	0.1fcd	0.1fcd	0.1fcd	0.1fcd	0fcd	0fcd	0fcd	0fcd	0fcd	0fcd	0fcd	0fcd	0fcd	0fcd	0fcd

Intensities in 0° c-plane

0°	5°	10°	15°	20°	25°	30°	35°	40°	45°	50°	55°	60°	65°	70°	75°	80°	85°	90°	95°
53.7	54.8	54.9	54.5	53.8	53.0	52.1	50.6	49.1	47.3	44.9	41.7	37.1	31.8	25.6	18.9	12.0	5.3	1.0	0.4
100%	102%	102%	101%	100%	99%	97%	94%	91%	88%	84%	78%	69%	59%	48%	35%	22%	10%	2%	1%

Intensities in 90° c-plane

0°	5°	10°	15°	20°	25°	30°	35°	40°	45°	50°	55°	60°	65°	70°	75°	80°	85°	90°	95°
53.7	52.8	52.8	52.4	51.5	50.3	48.7	47.1	45.2	43.3	40.7	38.2	34.8	30.9	26.1	20.9	15.1	9.2	4.1	0.9
100%	98%	98%	98%	96%	94%	91%	88%	84%	81%	76%	71%	65%	58%	49%	39%	28%	17%	8%	2%

Intensities in 180° c-plane

0°	5°	10°	15°	20°	25°	30°	35°	40°	45°	50°	55°	60°	65°	70°	75°	80°	85°	90°	95°
53.7	53.4	52.4	51.4	50.3	49.3	48.0	46.2	44.2	41.8	39.0	36.2	33.4	30.0	26.5	22.2	17.8	13.2	8.5	4.8
100%	99%	98%	96%	94%	92%	89%	86%	82%	78%	73%	67%	62%	56%	49%	41%	33%	25%	16%	9%

Intensities in 270° c-plane

0°	5°	10°	15°	20°	25°	30°	35°	40°	45°	50°	55°	60°	65°	70°	75°	80°	85°	90°	95°
53.7	52.9	52.6	52.1	51.1	50.0	48.5	46.7	44.6	42.3	40.0	37.2	33.9	30.4	26.1	21.2	16.0	10.4	5.5	1.8
100%	99%	98%	97%	95%	93%	90%	87%	83%	79%	74%	69%	63%	57%	49%	39%	30%	19%	10%	3%

Beam angle 50%	Field angle 10%	Cutoff angle 2,5%	Intensity ratio in 120° cone	Intensity ratio in 90° cone
138.1°	178.9°	190°	67.7%	43.1%

Photometric Details



RBG24-6.0-DRY-RGB-BL

Product name:
RBG24-6.0-DRY-RGB-BL

Date:
3/17/2020

Powering product:
IQ-PH-80-120/24

Output: 57.0 lm/ft
Peak: 14.1 cd
Power: 1.7 W/ft
PF: 1.0



Light efficiency:



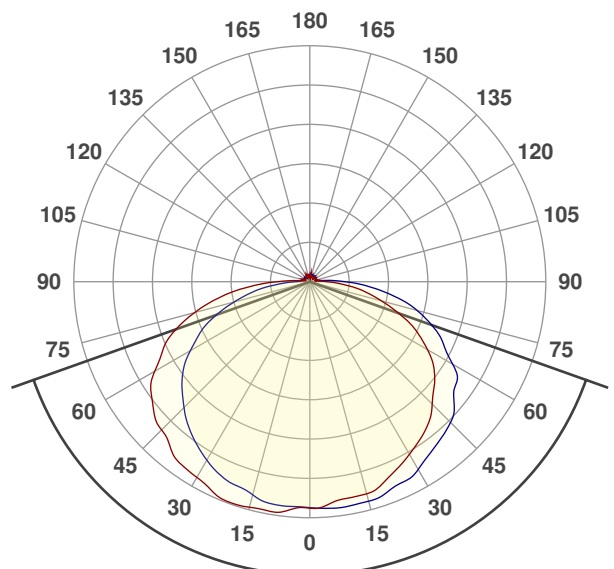
Light quality:



Color temperature:



Beam Angle

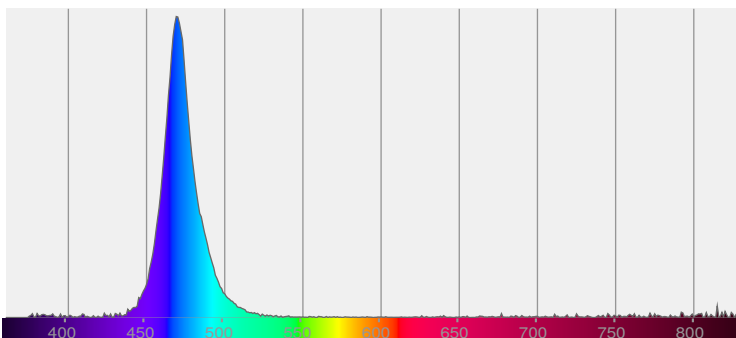


140.9°

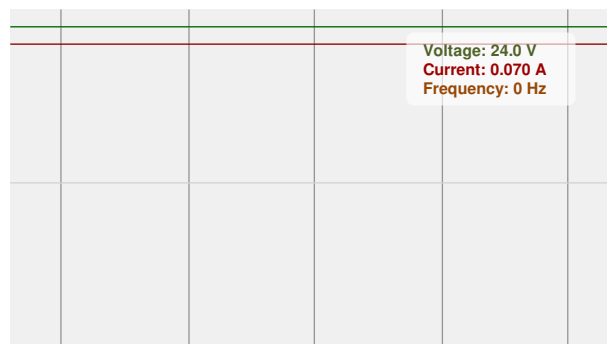
CIE 1931
x: 0.125
y: 0.084



Spectra



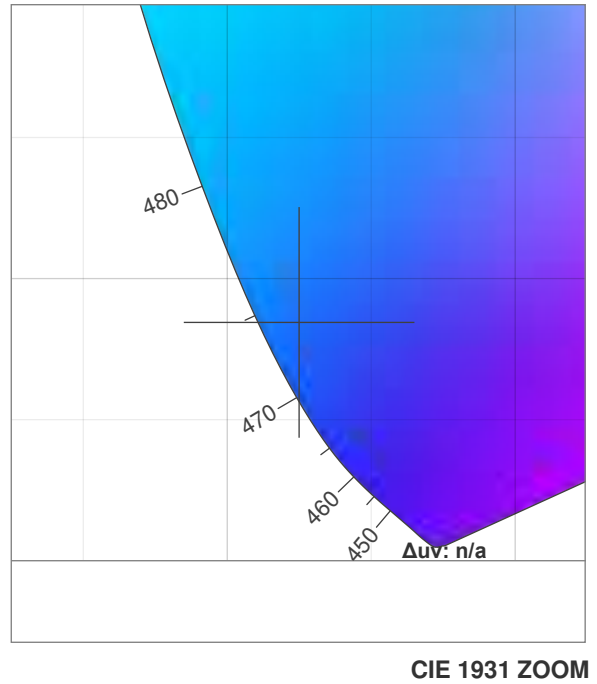
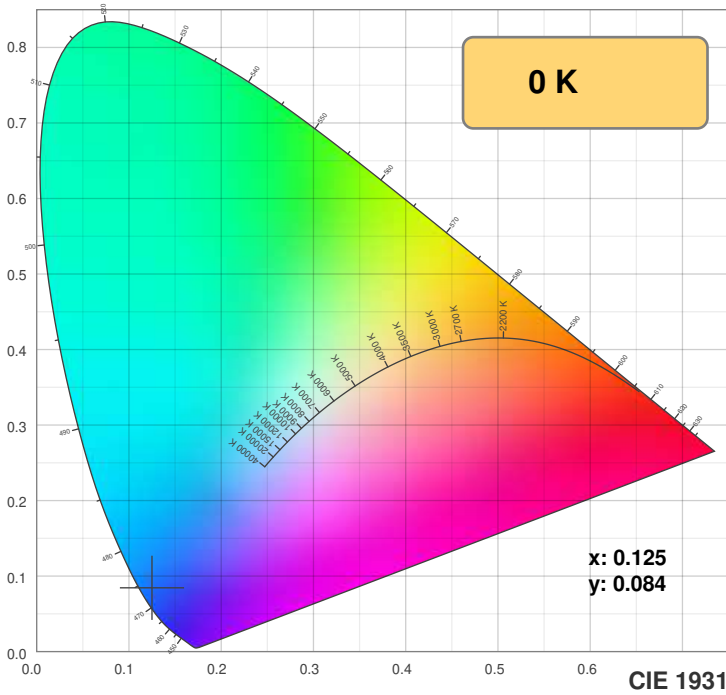
Power



Color Details

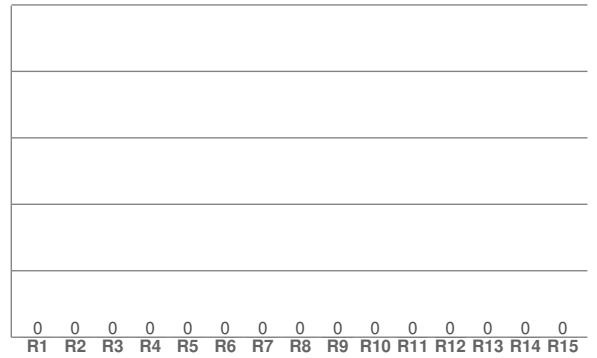
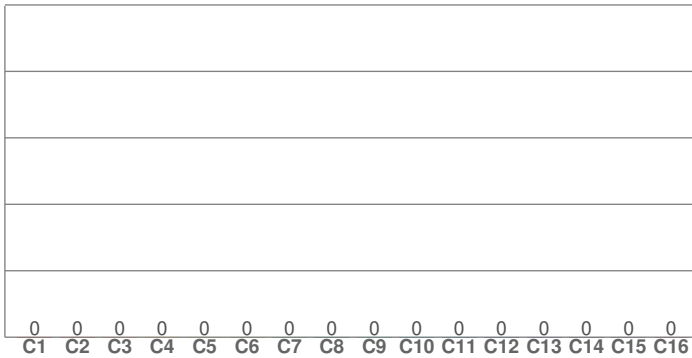


RBG24-6.0-DRY-RGB-BL



TM30: 0.0

CRI: 0.0 (R1-R8)



CRI R values, only R1-R8 are used to calculate final CRI value

R1	R2	R3	R4	R5	R6	R7	R8	R9	R10	R11	R12	R13	R14	R15
0.0	0.0	0.0	0.0	0.0	0.0	0.0	0.0	0.0	0.0	0.0	0.0	0.0	0.0	0.0

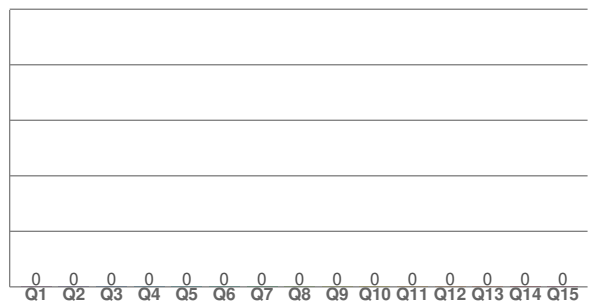
TM30 C values, 16 binned values out of total of 99 C values

C1	C2	C3	C4	C5	C6	C7	C8	C9	C10	C11	C12	C13	C14	C15	C16
0.0	0.0	0.0	0.0	0.0	0.0	0.0	0.0	0.0	0.0	0.0	0.0	0.0	0.0	0.0	0.0

CQS Q values

Q1	Q2	Q3	Q4	Q5	Q6	Q7	Q8	Q9	Q10	Q11	Q12	Q13	Q14	Q15
0.0	0.0	0.0	0.0	0.0	0.0	0.0	0.0	0.0	0.0	0.0	0.0	0.0	0.0	0.0

CQS: 0.0



Color parameters

Color temperature	Color rendering index	Red component	Color fidelity	Color gamut	Color quality scale	Color coordinate cie 1931	Color coordinate cie 1931	Color coordinate	Color coordinate	Color deviation from black body
CCT	CRI	CRI R9	TM30 Rf	TM30 Rg	CQS	x	y	u	v	Δuv
0 K	0.0	0.0	0.0	0.0	0.0	0.125	0.084	0.133	0.135	n/a

TM30 Details

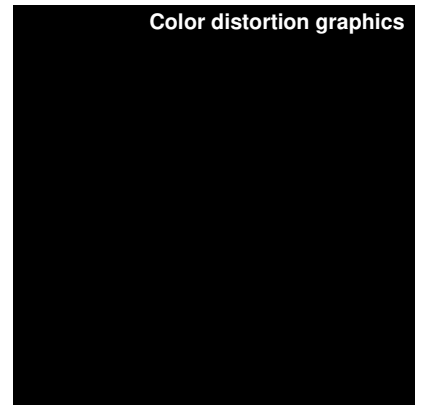
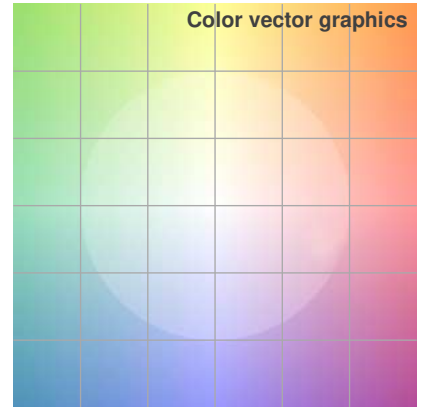
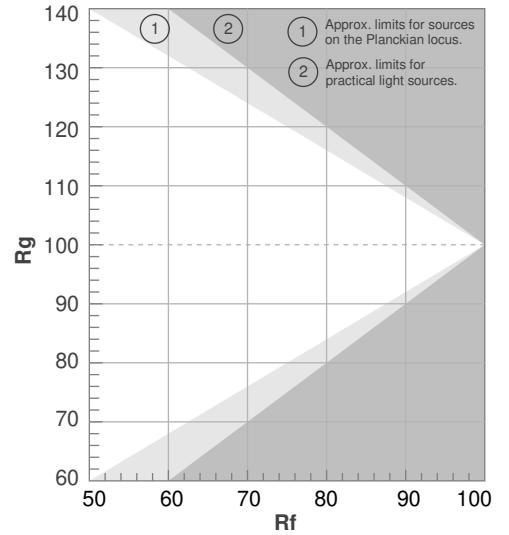


RBG24-6.0-DRY-RGB-BL

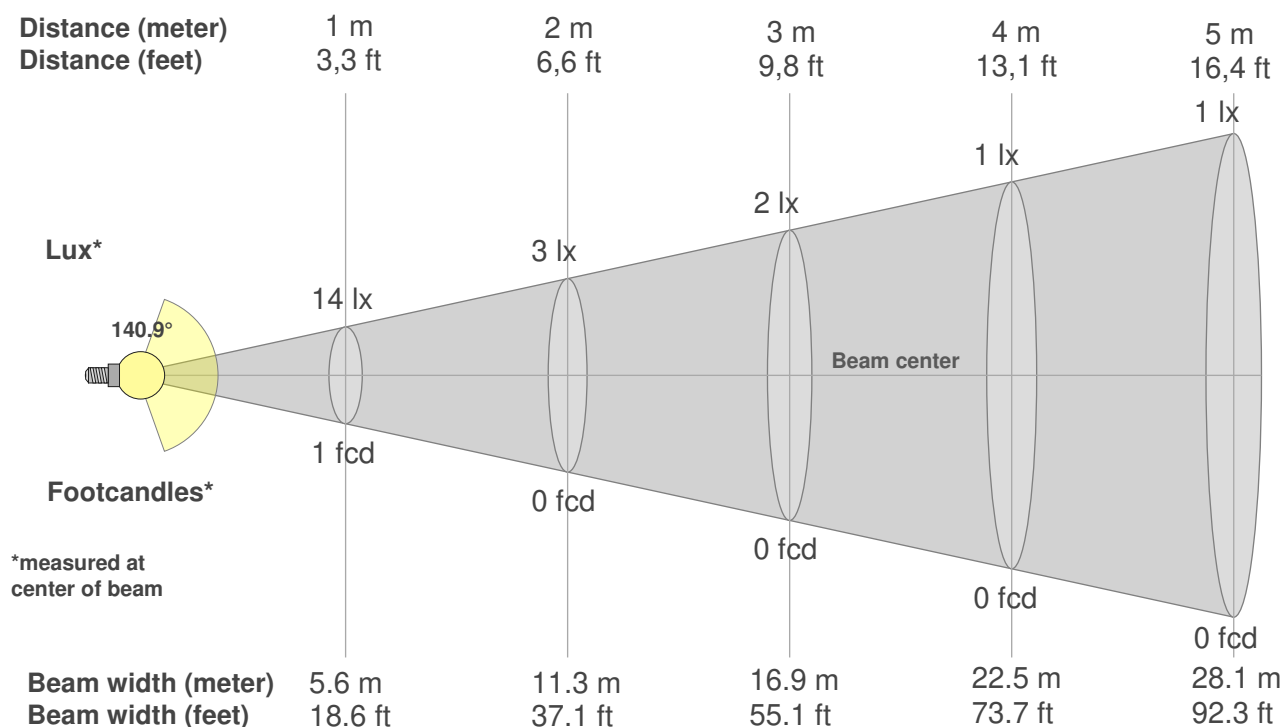
Rf 0.0
Fidelity index Rf

Rg 0.0
Gammut index Rg

Hue Bin	R _f	Graphic shifts (%)	
		Chroma	Hue
1	0	0%	0%
2	0	0%	0%
3	0	0%	0%
4	0	0%	0%
5	0	0%	0%
6	0	0%	0%
7	0	0%	0%
8	0	0%	0%
9	0	0%	0%
10	0	0%	0%
11	0	0%	0%
12	0	0%	0%
13	0	0%	0%
14	0	0%	0%
15	0	0%	0%
16	0	0%	0%



Color Evaluation Sample



Beam intensities from 1-20m

1m	2m	3m	4m	5m	6m	7m	8m	9m	10m	11m	12m	13m	14m	15m	16m	17m	18m	19m	20m
3.3ft	6.6ft	9.8ft	13.1ft	16.4ft	19.7ft	23ft	26.2ft	29.5ft	32.8ft	36.1ft	39.4ft	42.7ft	45.9ft	49.2ft	52.5ft	55.8ft	59.1ft	62.3ft	65.6ft
14lx	3lx	2lx	1lx	1lx	0lx	0lx	0lx	0lx	0lx	0lx	0lx	0lx	0lx	0lx	0lx	0lx	0lx	0lx	0lx
1.3fcd	0.3fcd	0.1fcd	0.1fcd	0.1fcd	0fcd	0fcd	0fcd	0fcd	0fcd	0fcd	0fcd	0fcd	0fcd	0fcd	0fcd	0fcd	0fcd	0fcd	0fcd

Intensities in 0° c-plane

0°	9°	18°	27°	36°	45°	54°	63°	72°	81°	90°	99°	108°	117°	126°	135°	144°	153°	162°	171°
13.6	13.2	13.1	12.2	11.5	10.4	9.2	7.5	5.2	3.1	1.1	0.4	0.4	0.4	0.3	0.3	0.4	0.3	0.3	0.5
100%	97%	96%	90%	84%	77%	68%	55%	39%	23%	8%	3%	3%	3%	2%	2%	3%	3%	2%	4%

Intensities in 90° c-plane

0°	9°	18°	27°	36°	45°	54°	63°	72°	81°	90°	99°	108°	117°	126°	135°	144°	153°	162°	171°
13.6	13.7	13.6	13.2	12.5	11.9	10.8	9.2	7.4	4.9	2.2	0.5	0.3	0.4	0.3	0.4	0.4	0.4	0.4	0.3
100%	101%	100%	97%	92%	88%	79%	68%	54%	36%	16%	3%	3%	3%	2%	3%	3%	3%	3%	2%

Intensities in 180° c-plane

0°	9°	18°	27°	36°	45°	54°	63°	72°	81°	90°	99°	108°	117°	126°	135°	144°	153°	162°	171°
13.6	14.0	14.1	13.7	13.4	12.6	11.7	10.1	8.1	5.2	2.1	0.4	0.5	0.3	0.3	0.3	0.3	0.3	0.3	0.4
100%	103%	104%	101%	98%	93%	86%	74%	59%	38%	15%	3%	4%	2%	2%	2%	3%	2%	2%	3%

Intensities in 270° c-plane

0°	9°	18°	27°	36°	45°	54°	63°	72°	81°	90°	99°	108°	117°	126°	135°	144°	153°	162°	171°
13.6	13.5	13.1	12.6	11.8	10.7	9.4	7.7	5.5	3.2	1.0	0.5	0.4	0.3	0.3	0.3	0.3	0.4	0.3	0.4
100%	100%	96%	93%	87%	79%	69%	56%	41%	23%	7%	4%	3%	2%	3%	2%	2%	3%	2%	3%

Beam angle 50%	Field angle 10%	Cutoff angle 2,5%	Intensity ratio in 120° cone	Intensity ratio in 90° cone
140.9°	180.8°	359.6°	64.6%	40.8%